

MEDICAL SPACE FOR LEASE

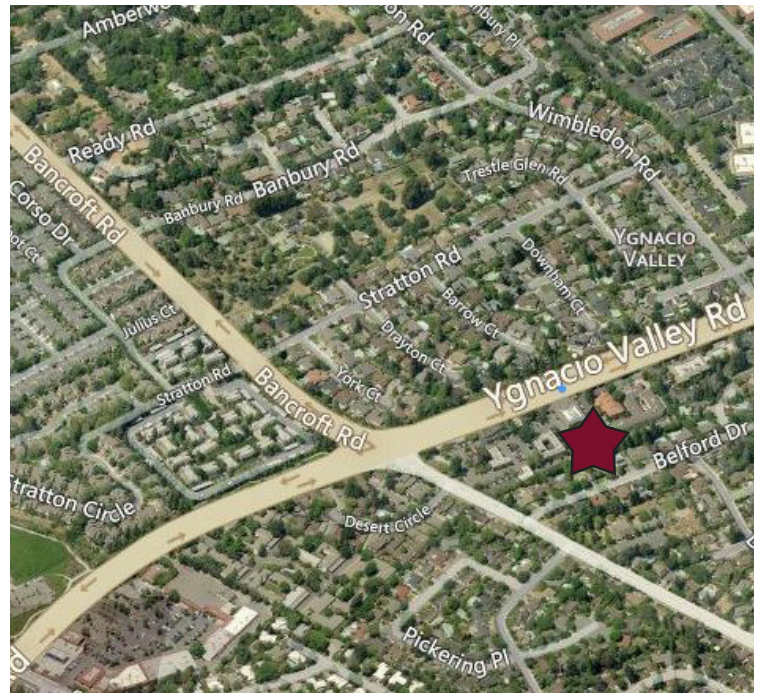
2123 YGNACIO VALLEY ROAD, SUITE 100, WALNUT CREEK



PROPERTY INFORMATION

- Beautiful medical space available for lease
- Available to sublease or share
- Approximately 3,261±SF
- Nine (9) exam rooms, four (4) consultation offices, two (2) restrooms, lunchroom and large waiting room
- LED: 8/31/18
- Call for tour and pricing information

AREA MAP



MITCH YADEN

LIC. ID# 01943445

MYADEN@LEE-ASSOCIATES.COM

925-737-4152

VIRGINIA VOELKEL

LIC. ID# 00791918

VVOELKEL@LEE-ASSOCIATES.COM

925-737-4150

ALEX PECK

LIC. ID# 01981426

APECK@LEE-ASSOCIATES.COM

925-239-1414

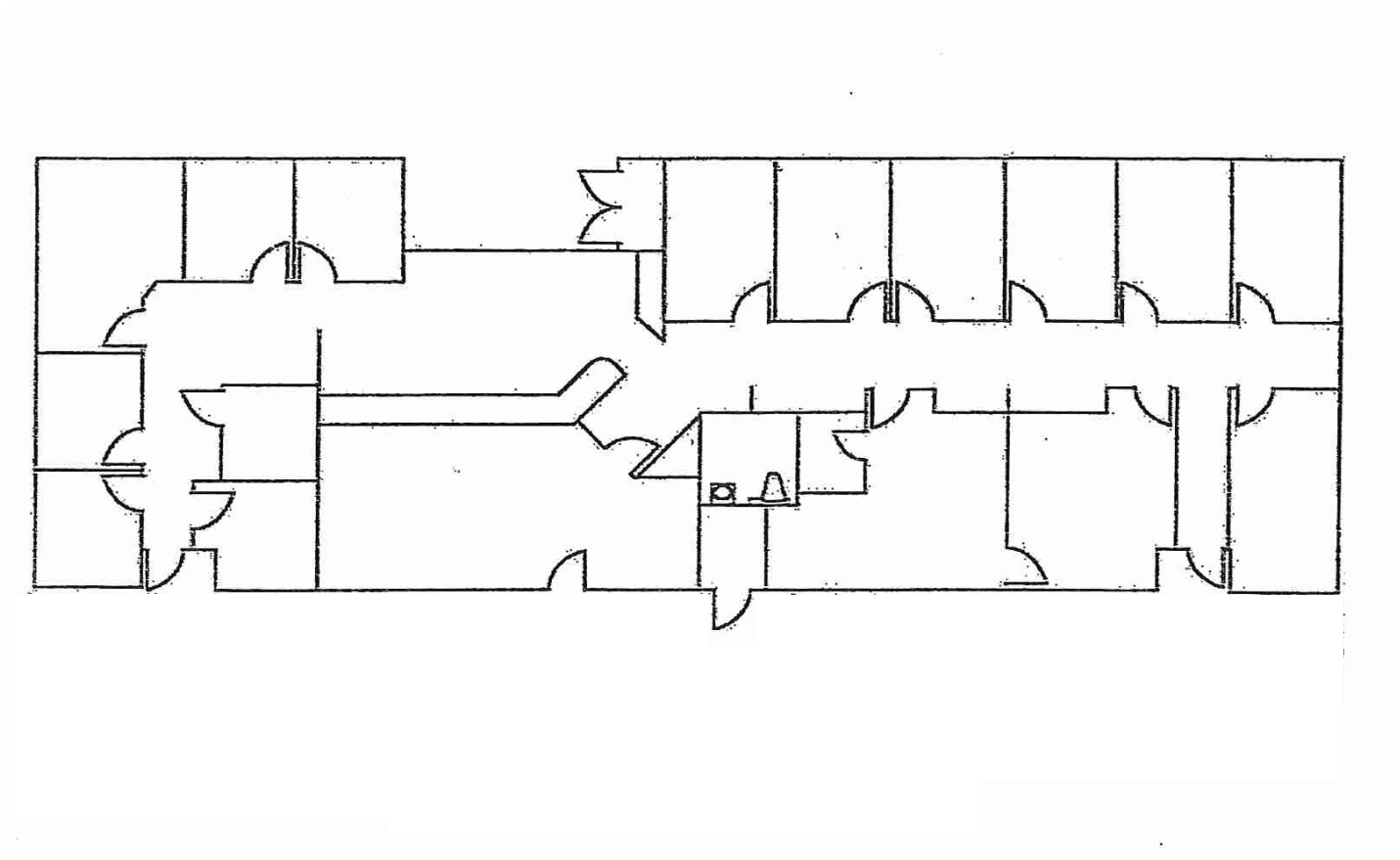
 **LEE &
ASSOCIATES**
COMMERCIAL REAL ESTATE SERVICES

The information contained herein is based on estimates and assumptions and is presented for illustration purposes only. No representations, warranties or guarantees of any kind are made.

MEDICAL SPACE FOR LEASE

2123 YGNACIO VALLEY ROAD, SUITE 100, WALNUT CREEK

FLOOR PLAN



MITCH YADEN

LIC. ID# 01943445

MYADEN@LEE-ASSOCIATES.COM

925-737-4152

VIRGINIA VOELKEL

LIC. ID# 00791918

VVOELKEL@LEE-ASSOCIATES.COM

925-737-4150

ALEX PECK

LIC. ID# 01981426

APECK@LEE-ASSOCIATES.COM

925-239-1414

 **LEE &
ASSOCIATES**
COMMERCIAL REAL ESTATE SERVICES

The information contained herein is based on estimates and assumptions and is presented for illustration purposes only.

No representations, warranties or guarantees of any kind are made.