

4530 Whipple Avenue Canton, Ohio

COME JOIN Party Place

5,000 S.F. Now Available



- JOIN THE PARTY PLACE IN BELDEN VILLAGE!
- PRIME LOCATION NEAR Belden Village Mall, I-77, Target, Kohl's, Toys R Us, Pat Catan's and others.

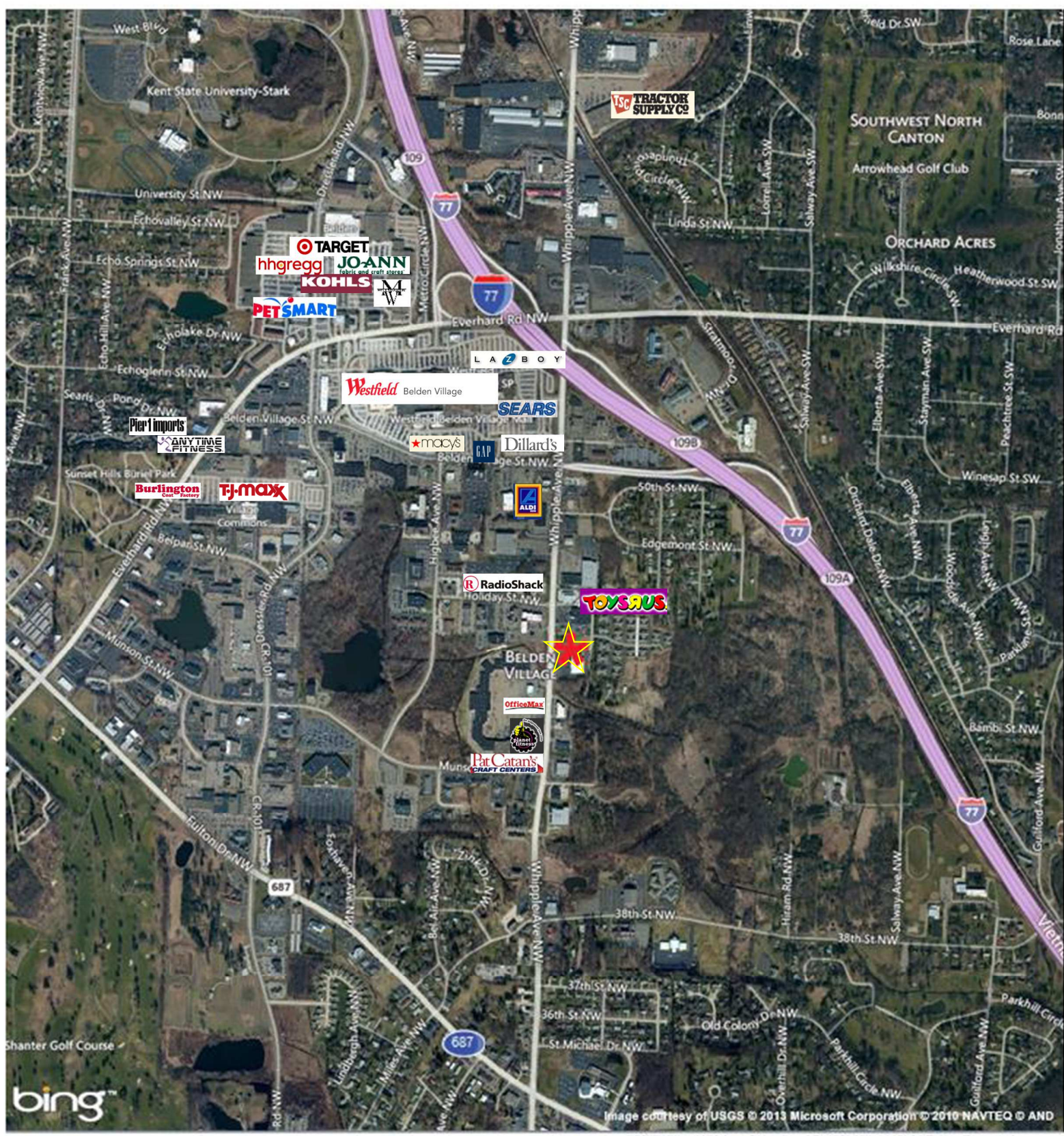


Demographics: 1 mile 3 mile 5 mile
Population 3,329 58,127 166,927
Med HH Income \$53,608 \$52,165 \$50,100
(Source: Applied Geographical Solutions, 2013 estimate)

Traffic Count:
 Whipple Ave & Fulton Rd: 38,020
 Whipple Ave & Munson St: 31,570
 (Average 24-Hour Traffic Volume)

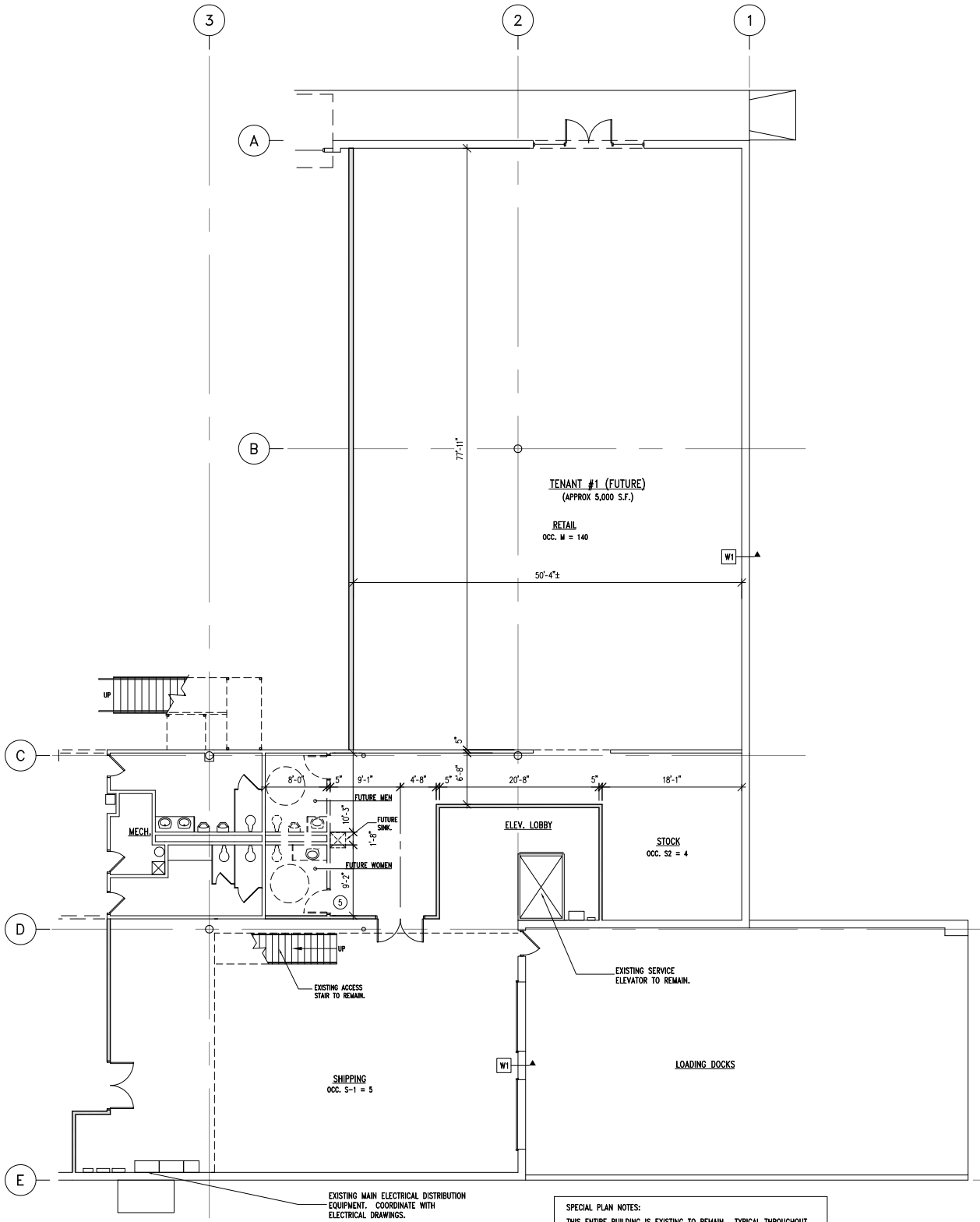
Contact:
 Mike Herzfeld
mherzfeld@reisenfeld.com

Reisenfeld & Company
 3659 Green Rd. Suite 217
 Beachwood, Ohio
 (216) 765-8080 ext. 232

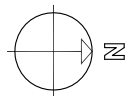


bing

Image courtesy of USGS © 2013 Microsoft Corporation © 2010 NAVTEQ © AND



FIRST FLOOR PLAN
N.T.S.



SPECIAL PLAN NOTES:
THIS ENTIRE BUILDING IS EXISTING TO REMAIN. TYPICAL THROUGHOUT
UNLESS OTHERWISE INDICATED AND/OR REQUIRED FOR NEW WORK.

Revisions:

arkinetics
architects + urbanists
Architecture - Planning - Interiors - Preservation - Urban Design
www.arkinetics.com

Lorain Office
201 1/2 Fifth Street
Lorain, OH 44052
P: 440.246.3100
F: 440.246.5017

Cleveland Office
3725 Pearl Road
Cleveland, OH 44109
P: 216.748.7800
F: 216.748.1300

Project:

THE PARTY PLACE

(Interior Renovation)
4530 Wipple Avenue N.W.
Canton, Ohio

arkinetics Project #: 10066.01

Drawing Title
FIRST FLOOR PLAN

Date of Issue:
TO OWNER 04-19-13

© arkinetics
Sheet #:

A-100

COMPLETE PROFILE

1990-2010 Census, 2011 Estimates with 2016 Projections

Calculated using Proportional Block Groups

Lat/Lon: 40.8492/-81.4225

RFULL9

4530 Whipple Ave Nw Canton, OH	1 Mile	3 Miles	5 Miles	10 Miles
Population				
Estimated Population (2011)	3,329	58,127	166,927	333,128
Projected Population (2016)	3,457	56,887	164,683	326,853
Forecasted Population (2021)	3,551	55,492	160,322	323,487
Census Population (2010)	3,300	58,537	167,353	334,559
Census Population (2000)	3,285	59,368	172,447	332,745
Projected Annual Growth (2011-2016)	127 0.8%	-1,240 -0.4%	-2,243 -0.3%	-6,275 -0.4%
Historical Annual Growth (2010-2011)	29 0.9%	-410 -0.7%	-427 -0.3%	-1,431 -0.4%
Historical Annual Growth (2000-2010)	15 -	-831 -0.1%	-5,094 -0.3%	1,815 -
Estimated Population Density (2011)	1,061 <i>psm</i>	2,057 <i>psm</i>	2,127 <i>psm</i>	1,061 <i>psm</i>
Trade Area Size	3.1 <i>sq mi</i>	28.3 <i>sq mi</i>	78.5 <i>sq mi</i>	314.0 <i>sq mi</i>
Households				
Estimated Households (2011)	1,677	26,149	70,735	135,876
Projected Households (2016)	1,799	26,333	71,825	137,180
Forecasted Households (2021)	1,931	26,570	72,371	140,222
Census Households (2010)	1,661	26,145	70,377	135,518
Census Households (2000)	1,559	25,874	70,746	131,517
Projected Annual Growth (2011-2016)	122 1.5%	184 0.1%	1,090 0.3%	1,304 0.2%
Historical Annual Change (2000-2011)	118 0.7%	275 0.1%	-11 -	4,359 0.3%
Average Household Income				
Estimated Average Household Income (2011)	\$60,004	\$64,881	\$62,550	\$62,308
Projected Average Household Income (2016)	\$63,750	\$69,676	\$67,139	\$67,095
Census Average Household Income (2000)	\$61,238	\$58,292	\$53,525	\$53,227
Census Average Household Income (1990)	\$42,456	\$40,436	\$35,441	\$35,077
Projected Annual Change (2011-2016)	\$3,746 1.2%	\$4,795 1.5%	\$4,589 1.5%	\$4,787 1.5%
Historical Annual Change (2000-2011)	\$17,547 3.8%	\$24,444 5.5%	\$27,109 7.0%	\$27,230 7.1%
Median Household Income				
Estimated Median Household Income (2011)	\$53,608	\$52,165	\$50,100	\$51,639
Projected Median Household Income (2016)	\$56,786	\$55,455	\$53,402	\$54,979
Census Median Household Income (2000)	\$42,646	\$44,639	\$42,326	\$43,240
Census Median Household Income (1990)	\$33,236	\$31,838	\$29,098	\$29,685
Projected Annual Change (2011-2016)	\$3,178 1.2%	\$3,290 1.3%	\$3,301 1.3%	\$3,340 1.3%
Historical Annual Change (2000-2011)	\$20,372 5.6%	\$20,327 5.8%	\$21,002 6.6%	\$21,953 6.7%
Per Capita Income				
Estimated Per Capita Income (2011)	\$30,916	\$30,280	\$27,247	\$25,961
Projected Per Capita Income (2016)	\$33,916	\$33,489	\$30,114	\$28,777
Census Per Capita Income (2000)	\$28,451	\$25,278	\$21,939	\$21,008
Census Per Capita Income (1990)	\$19,095	\$17,233	\$14,154	\$13,415
Projected Annual Change (2011-2016)	\$3,000 1.9%	\$3,210 2.1%	\$2,867 2.1%	\$2,816 2.2%
Historical Annual Change (2000-2011)	\$11,821 5.6%	\$13,046 6.9%	\$13,093 8.4%	\$12,547 8.5%
Other Income				
Estimated Median Disposable Income (2011)	\$45,075	\$43,774	\$42,082	\$43,314
Projected Median Disposable Income (2016)	\$46,965	\$46,140	\$44,438	\$45,724
Estimated Average Household Net Worth (2011)	\$393,131	\$441,372	\$432,844	\$434,408

This report was produced using data from private and government sources deemed to be reliable. The information herein is provided without representation or warranty.