

65-75 ERIEVIEW PLAZA

FOURTH FLOOR SUBLEASE

CLEVELAND, OHIO

CUSHMAN &
WAKEFIELD

CRESCO
Real Estate

FOURTH FLOOR



65-75 ERIEVIEW PLAZA

CAFE / DELI

1. Vintage Tea & Coffee
2. The Copper Moon
3. Phoenix Coffee
4. Moko Cafe
5. Starbucks
6. Artefino Art Gallery Cafe
7. Starbucks
8. Stone Oven Bakery Cafe
9. Oasis Urban Cafe
10. Pho Thang Cafe
11. Market Cafe
12. Jui's Cafe
13. Phuel Cafe
14. Barrister's Deli
15. Danny's Deli
16. Restore
17. Pour Cleveland
18. Al's Deli

RESTAURANTS

1. Great Steak & Potato Company
2. Winking Lizard
3. Mirna Cuisine
4. Manchu Wok
5. Captain Tony's Pizza & Pasta
6. Subway
7. A Better Place Caribbean & American Cuisine
8. Fresh Catch Seafood Express
9. Market Creations Restaurant
10. Walnut Wednesday in Perk Plaza
11. Great Taste Chinese Restaurant
12. Cleveland Pickle
13. Masthead Brewery Cleveland's Steakhouse
14. Cowell & Hubbard
15. Encore Restaurant & Blue Bar
16. Great Lakes Chili
17. Otto Moser's Restaurant
18. Sung's House
19. Cibreo Italian Kitchen
20. Hofbrauhaus
21. Stadium 3
22. Wild Eagle Saloon
23. Tomaydo Tomahhdo
24. Potbelly's
25. Cedarland Express
26. Sapparro Sushi
27. Cleveland Pickle
28. Hodges Cleveland

LOCATION AERIAL



FOURTH FLOOR

26,000 SF

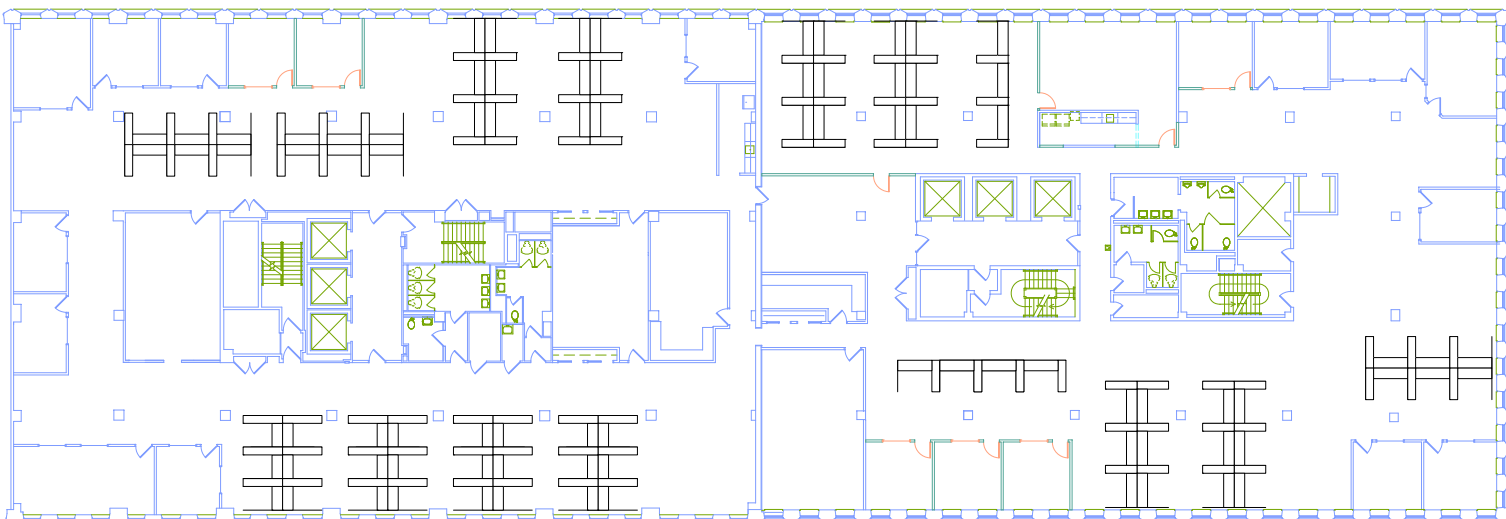


AREA / NEIGHBORHOOD AMENITIES

- EXCELLENT ACCESS TO ALL MAJOR FREEWAY SYSTEMS AND PUBLIC TRANSPORTATION IS AT YOUR DOORSTEP.
- ONE OF THE MOST CONVENIENT AND ACCESSIBLE EXECUTIVE AIRPORTS.
- GROWING URBAN RESIDENTIAL COMMUNITY AND SUPERIOR HOTEL AMENITIES.
- PROXIMITY TO A DEEP LABOR POOL WITH AN INTERNATIONAL STRENGTH IN THE MEDICAL SCIENCES.
- HIGHEST FIBER OPTIC INTERNET SPEEDS.
- HOME TO 3,200 RESIDENTS WITH OVER 600 APARTMENTS PLANNED OR UNDER CONSTRUCTION AND 500 MORE IN PRE-PLANNING.
- NEW RESTAURANTS: MASTHEAD BREWERY, WINKING LIZARD, URBAN FARMER AND MARKET CAFE.
- PARKER HANNIFIN DOWNTOWN YMCA AT THE GALLERIA.
- 12 HOTELS WITH OVER 3,300 ROOMS CURRENTLY AVAILABLE IN OR ADJACENT TO NINETWELVE DISTRICT.

WITHIN WALKING DISTANCE TO THE FOLLOWING

- PLAYHOUSE SQUARE DISTRICT, HOME TO NUMEROUS ENTERTAINMENT & THEATRE VENUES AND RESTAURANTS.
- RETAIL SHOPS.
- WIDE RANGE OF FOOD ESTABLISHMENTS.
- NEWLY REDEVELOPED CLEVELAND STATE UNIVERSITY CAMPUS.
- THE GALLERIA & THE YMCA.
- PERK PLAZA AT CHESTER COMMONS.
- RESERVE SQUARE.

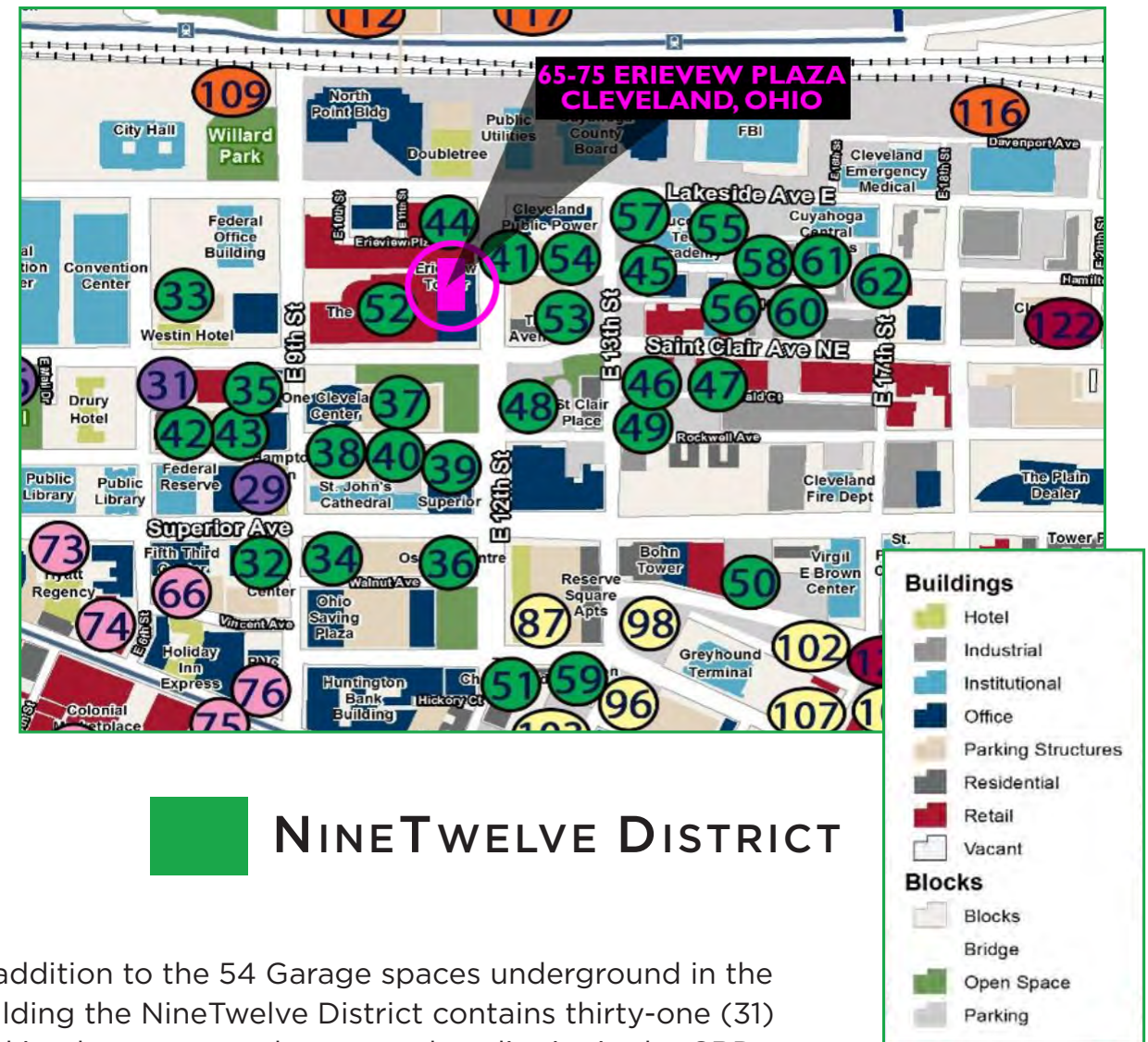


FOURTH FLOOR

CLOSER THAN YOU THINK

Parking

WHETHER YOU'RE COMMUTING TO YOUR JOB IN DOWNTOWN CLEVELAND, DRIVING UP FOR A VISIT, OR MOVING INTO YOUR NEW DOWNTOWN APARTMENT, DOWNTOWN CLEVELAND HAS THE TRANSPORTATION AND PARKING OPTIONS TO FIT BOTH YOUR LIFESTYLE AND YOUR NEEDS : PUBLIC TRANSIT, FREE DOWNTOWN TROLLEYS, TONS OF PARKING, BICYCLE COMMUTING AMENITIES AND OTHER TRANSIT OPTIONS.



NINETWELVE DISTRICT

In addition to the 54 Garage spaces underground in the building the NineTwelve District contains thirty-one (31) parking lots, greater than any other district in the CBD.

Key Parking Data Points - NineTwelve District:

- Lots range in cost from \$2.00 to \$16.00 per day and \$45.00 to \$260.00 per month.
- Average daily rate = \$7.95.
- Average monthly rate = \$125.85.
- Early Bird daily prices range from \$2.25 to \$8.00 per day.
- 16 lots are covered garages.
- 12 lots are gated and manned.
- Most garages are in good condition.
- Most of the open lots are ungated, unmanned, and in fair condition.



CLEVELAND SKYLINE



FOURTH FLOOR

DOWNTOWN CLEVELAND ALLIANCE (DCA) IS A NOT-FOR-PROFIT ORGANIZATION COMMITTED TO MAKING DOWNTOWN CLEVELAND THE MOST COMPELLING PLACE

[HTTP://WWW.DOWNTOWNCLEVELAND.COM/](http://www.downtowncleveland.com/)

Cleveland

TO WORK, PLAY AND LIVE.

WORK

Downtown Cleveland is a dynamic work environment that is home to thriving, innovative organizations. As Northeast Ohio's largest jobs center, Downtown Cleveland is full of transportation, entertainment and dining options that attract workers and employers who want to be surrounded by excitement and vibrancy.

Downtown Cleveland's strong talent base and employment growth fuel the office market. The most recently available data indicates that Downtown Cleveland employers increased employment 3.4 percent from 91,583 to 100,439 between 2011 and 2014. The Greater Downtown area experienced similar growth, increasing 5.5 percent from 124,098 to 130,902 during the same time period. This trend continued in 2015, with 53 employers committing to create or retain nearly 5,000 downtown jobs.

PLAY

There's so much going on in Downtown Cleveland!

Downtown Cleveland is an entertainment hub. From concerts at the House of Blues to the Broadway shows in Playhouse Square, dtCLE has it all!

The DCA team also produces a large amount of events that take place year round. From Downtown Cleveland Restaurant Week to Winterfest, Walnut Wednesday to North Coast Namaste, it's all here.

LIVE

Downtown Cleveland has six residential neighborhoods brimming with attractions, world-class restaurant and entertainment options to fit all lifestyles.

As Northeast Ohio's fastest growing neighborhood, Downtown Cleveland has big city amenities and neighborhood communities. Today, a diverse population of more than 14,000 people live in Downtown Cleveland.

CLEVELAND METROPARKS



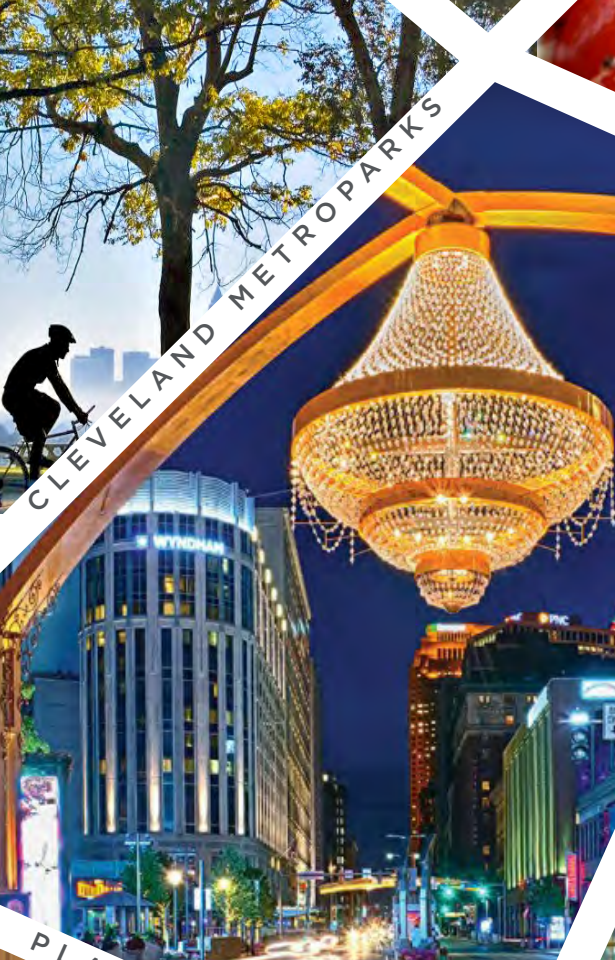
THE MARKET CAFE & WINE BAR



VINTAGE TEA & COFFEE



PARKER HANNIFAN
DOWNTOWN CLEVELAND YMCA



PLAYHOUSE SQUARE



THE GALLERIA



WALNUT WEDNESDAY



CONFERENCE AVAILABILITY

MASTHEAD BREWERY

PERK PLAZA

Work. Play. Live.

The NineTwelve District offers tenants access to an eclectic mix of food, fashion, fitness and fun, all within walking distance of **65-75 Erieview Plaza**. The district offers a cultured and distinctive blend of both new and old, which provides an environment unlike any other in Cleveland.



Discover a whole
new way to work.

FOURTH FLOOR SUBLEASE

Alexander L. Russo, SIOR
Senior Vice President
216.525.1495
arusso@crescorealestate.com

Patrick M. Reardon
Senior Vice President
216.525.1465
preardon@crescorealestate.com



3 Summit Park Drive, Suite 200
Cleveland, Ohio 44131
216.520.1200
crescorealestate.com