

FOR LEASE
Industrial | R&D | Flex



25,673 SF
Divisible to 11,371 SF



3524 Seagate Way | Oceanside, California

BUILDING FEATURES

Ground Floor:	23,183 Sq. Ft.
2nd Floor:	2,490 Sq. Ft.
Total:	25,673 Sq. Ft.
Existing Office:	2,543 Sq. Ft.
Loading Doors:	Two (2) Dock High Three (3) Grade Level
Clear Height:	24'
Power:	2,000 Amps 120/208 Volt
Parking:	3.0/1,000
Fees:	No CFD or Mello Roos!
Lease Rate:	\$0.60 psf Mo. NNN



www.SeagateCC.com

RON KING
760-517-5830
Lic #00868661
ron.king@cushwake.com

BOB WILLINGHAM
760-517-5846
Lic #01469841
bob.willingham@cushwake.com



5800 Armada Drive, Suite 101, Carlsbad, California 92008 | Phone - (760) 602-4800 | Fax - (760) 602-4801

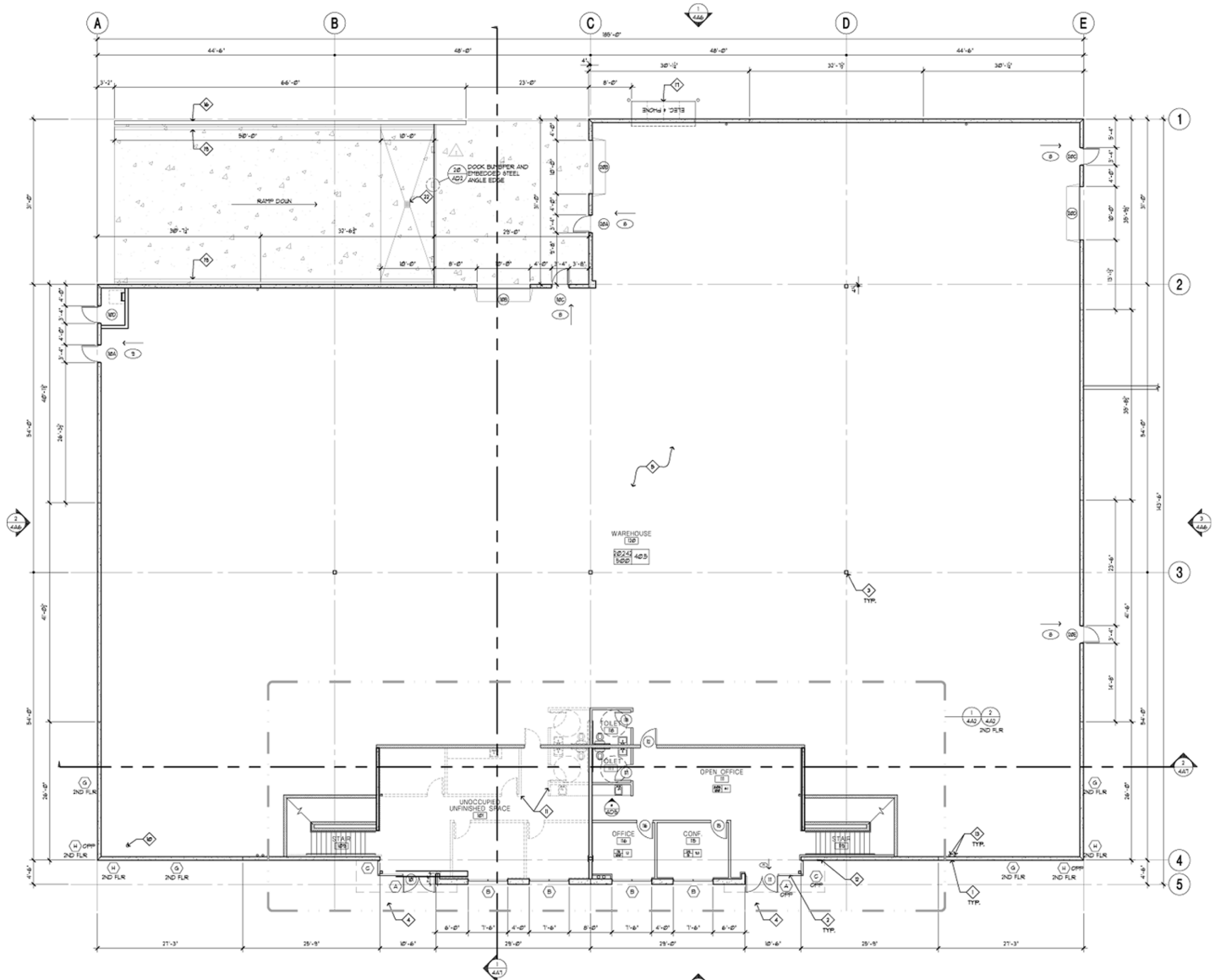
The information herein has been obtained from sources we believe to be reliable. While we do not doubt its accuracy, we have not verified it and make no guarantee, warranty or representation about it.

FOR LEASE
Industrial | R&D | Flex

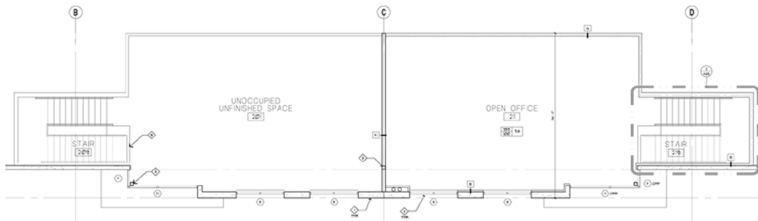


25,673 SF
Divisible to 11,371 SF

3524 Seagate Way | Oceanside, California



Second Floor



RON KING
760-517-5830
Lic #00868661
ron.king@cushwake.com

BOB WILLINGHAM
760-517-5846
Lic #01469841
bob.willingham@cushwake.com



5800 Armada Drive, Suite 101, Carlsbad, California 92008 | Phone - (760) 602-4800 | Fax - (760) 602-4801

The information herein has been obtained from sources we believe to be reliable. While we do not doubt its accuracy, we have not verified it and make no guarantee, warranty or representation about it.