

BUFFALO

BUILDING

1124 Eastlake Ave E, Seattle, WA



BUFFALO BUILDING

DOUBLEKNOT

SPEED
LIMIT
25

NEWMARK

TRACY TURNURE
t 425.372.9923
tracy.turnure@nmrk.com

BRODY O'KEEFE
t 206.453.1463
brody.okeefe@nmrk.com



Table of Contents

01 Building Highlights

02 Floor 1 | 2,840 SF

03 Floor 1 Photos

04 Floor 2 | 3,560 SF

05 Floor 2 Photos

06 Contact Page

Building Highlights

- 6,400 RSF Office
- Brick & beam Office Building with Flex Space
- Two-floor building
- Option to lease floors separately
- 15 on-site Reserved and Unreserved Parking Stalls
- Located on Eastlake Ave, by Fred Hutchins and Amazon Campuses

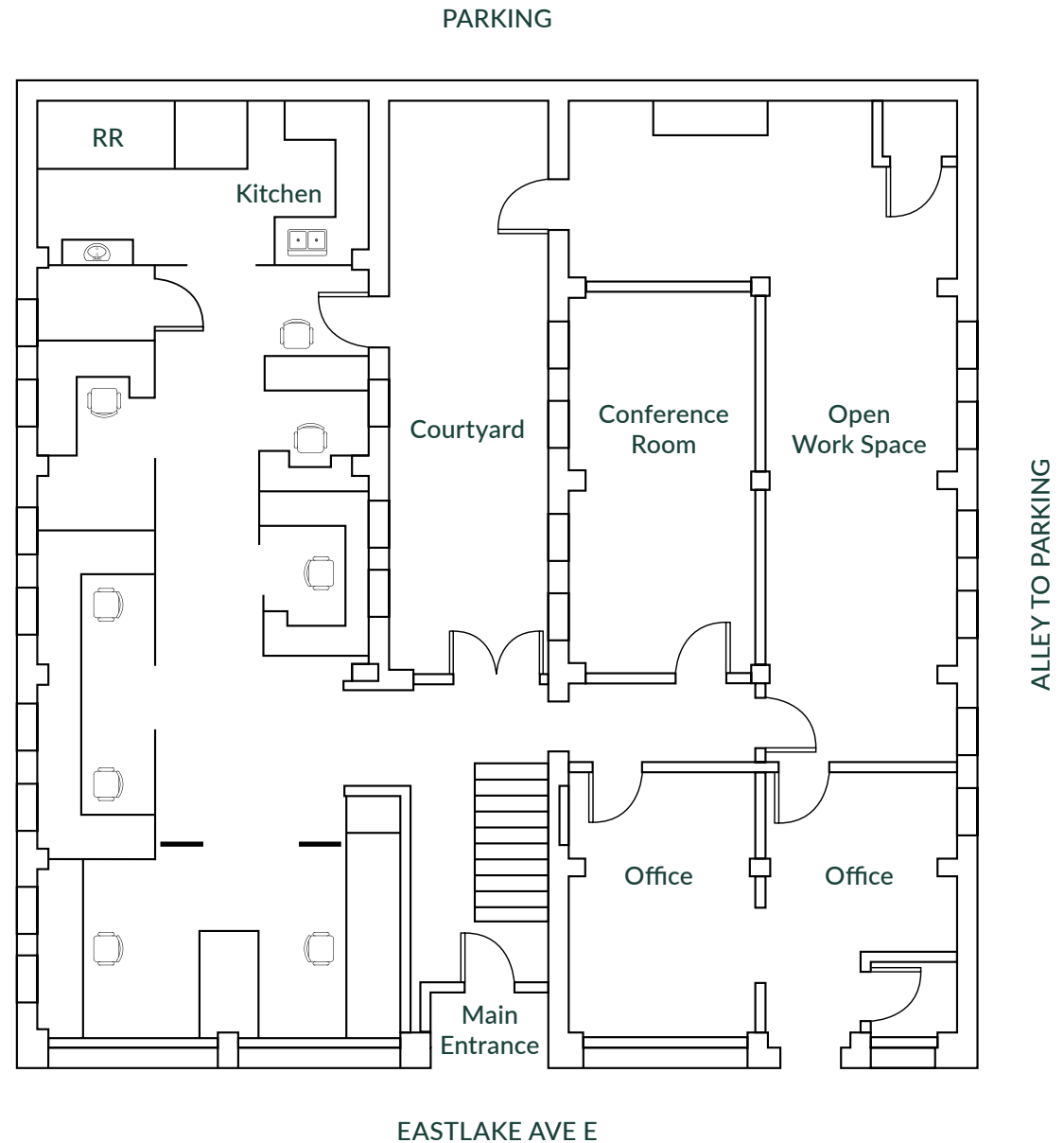


Floor 1

2,840 SF

- Open area with workstations build-out
- Large conference room
- Kitchenette
- Private restrooms
- Exterior courtyard space
- Large private office
- Open work/flex space
- 6,400 RSF on Floors 1 & 2

FLOOR 1 VIRTUAL TOUR



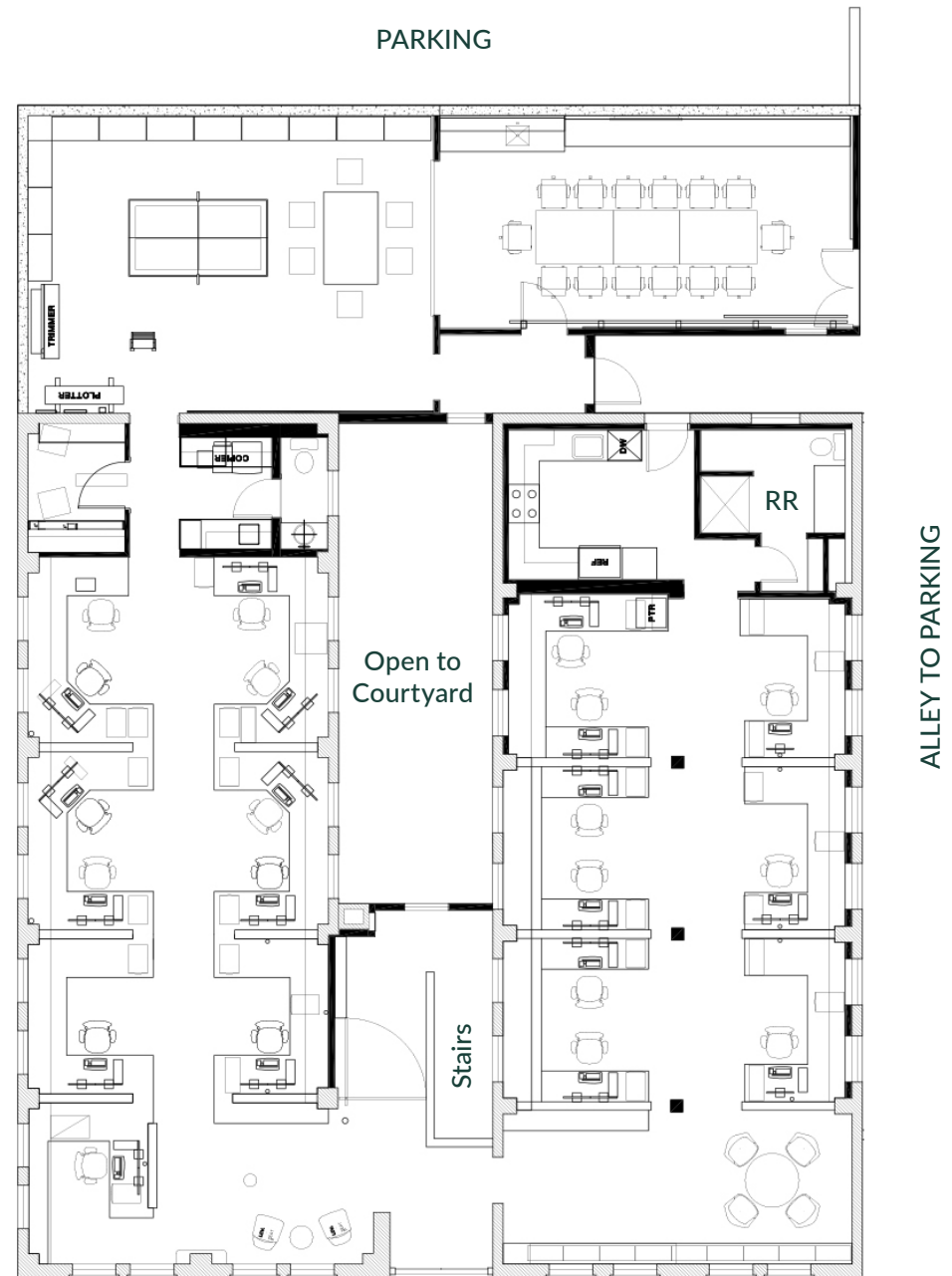


Floor 2

3,560 SF

- Reception area
- Combination of built-in office desks, workstations and open areas
- Kitchen
- Utility room
- Two private restrooms
- Includes 720 SF of flex space, including a large conference room, rolling garage door, storage and open space
- 6,400 RSF on Floors 1 & 2

FLOOR 2 VIRTUAL TOUR



EASTLAKE AVE E





FLOOR 2 | 1124 Eastlake Ave E, Seattle, WA



BUFFALO

BUILDING

1124 Eastlake Ave E, Seattle, WA

TRACY TURNURE

t 425.372.9923

tracy.turnure@nrmk.com

BRODY O'KEEFE

t 206.453.1463

brody.okeefe@nrmk.com

NEWMARK



The distributor of this communication is performing acts for which a real estate license is required. The information contained herein has been obtained from sources deemed reliable but has not been verified and no guarantee, warranty or representation, either express or implied, is made with respect to such information. Terms of sale or lease and availability are subject to change or withdrawal without notice. 18-1023