

# ORCHARD SQUARE | 355 Littleton Rd | Westford, MA

## NEIGHBORHOOD RETAIL SHOPPING CENTER

END CAP AND IN LINE UNIT SPACES FOR LEASE



307 Cambridge Street Cambridge, MA 02141

**BERNARD GIBBONS**

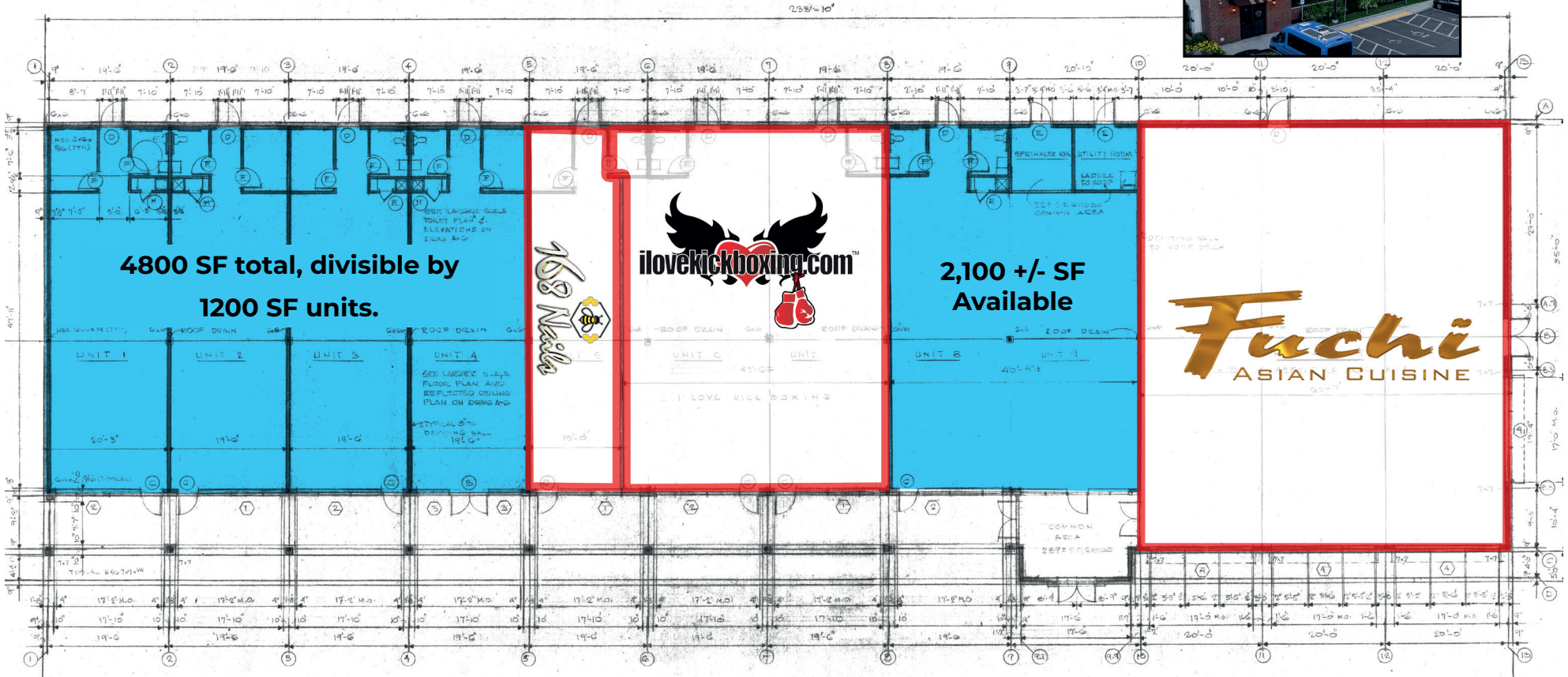
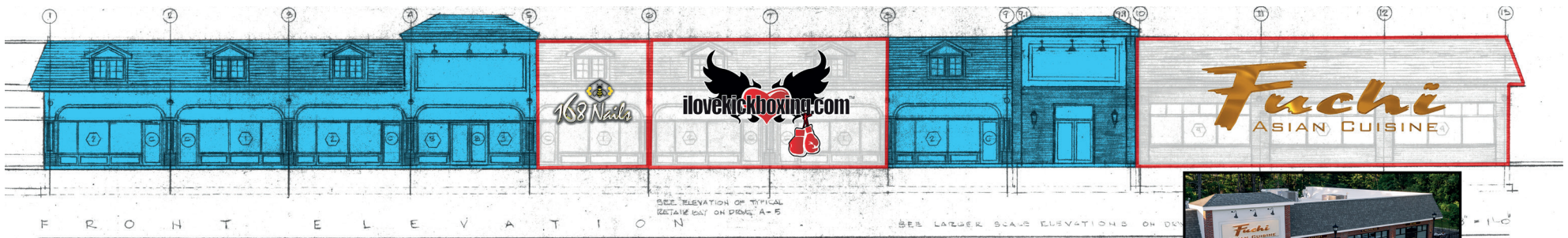
617.212.1369

bernard@abgrealty.com

# EXECUTIVE SUMMARY

Orchard Sq is a newly constructed Neighborhood Retail Shopping Center. Attractive architecture, landscaping and hardscape, ample parking, a freestanding drive through, lunch and dinner time boosts in foot traffic from Fuchi's Asian Cuisine, and excellent visibility from Littleton Rd make this Center an attractive opportunity for any retail or service business.





**PROPERTY HIGHLIGHTS**

- New Construction
- Attractive Hardscape
- Pilon Signage
- End Cap, and In Line Units Available
- Ample Parking

# POINTS OF INTEREST

