

# JAMAICA RETAIL SPACE AVAILABLE

## 89-36 165TH STREET

BETWEEN JAMAICA AVENUE & 89TH AVENUE



**APPROXIMATE SIZE:**  
2,447 sq. ft. - Ground Fl  
2,705 sq. ft. - Basement

**FRONTAGE:**  
22'

**ASKING RENT:**  
Upon request

**NEIGHBORS INCLUDE:**

Hyperactive  
Boston Market  
Footlocker  
AT&T  
House of Hoops  
V.I.M  
Boost Mobile  
Modell's Sporting Goods  
Rainbow  
Golden Krust

**COMMENTS:**

- Formerly House of Premium
- Available for immediate possession
- Part of the 165th Street Mall
- Next to the Jamaica Colosseum
- Across from Jamaica Bus Terminal
- Natural divisions considered
- Dense residential population
- Heavy foot traffic

**MASS TRANSPORTATION:**

**169th Street (F)**  
2,497,336 annual riders



# JAMAICA RETAIL SPACE AVAILABLE

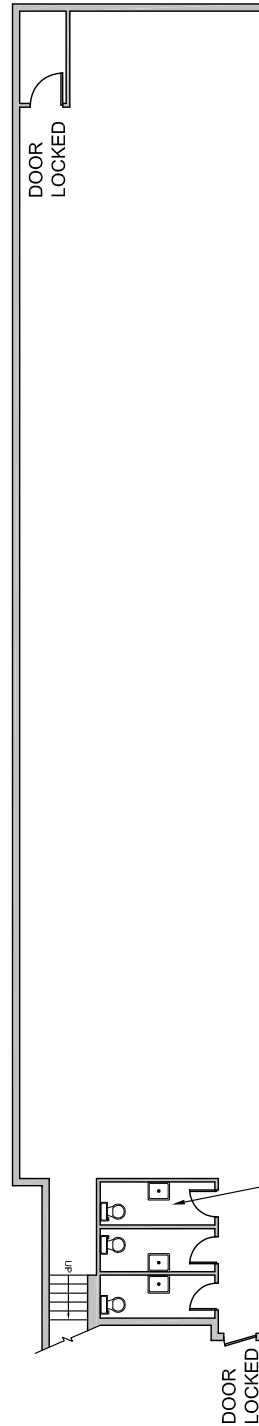
## 89-36 165TH STREET

BETWEEN JAMAICA AVENUE & 89TH AVENUE

### GROUND



### BASEMENT



**89-36**  
165<sup>th</sup> STREET  
*Jamaica*

## CONTACT EXCLUSIVE AGENTS

**Cory G Zelnik**  
cory@zelnikco.com

**Sean Philipps**  
sean@zelnikco.com

**Michael Peguero**  
michael@zelnikco.com

**Zelnic & Company LLC**  
ph: (212) 223-2200