



Available For Lease



Approximately 80,668 RSF of Contiguous Class A Office Space (Divisible to 10,000 RSF)

Three-story elegantly appointed brick building

4/1,000 parking ratio with overflow parking available

Serene setting with views of the wetlands, yet within a short distance of many amenities including The Streets of Tanasbourne

Perfect space for a corporate headquarters, traditional and/or high density office users, and even call centers

Significant data infrastructure in building

Rates: \$23.50 PSF

kiddermathews.com

Contact

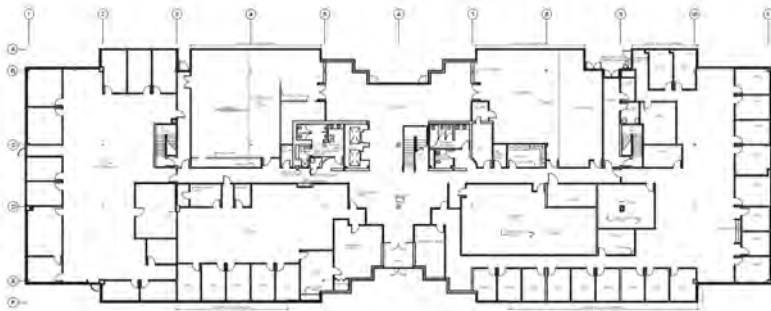
Keith Young
Senior Vice President
503.221.2275
kyoung@kiddermathews.com

Josh Schwartz
Associate
503.221.2284
jschwartz@kiddermathews.com

Available For Lease

Bronson Creek Building

1st Floor - 27,884 RSF



2nd Floor - 26,656 RSF



3rd Floor - 26,128 RSF



Contact

Keith Young
Senior Vice President
503.221.2275
kyoung@kiddermathews.com

Josh Schwartz
Associate
503.221.2284
jschwartz@kiddermathews.com

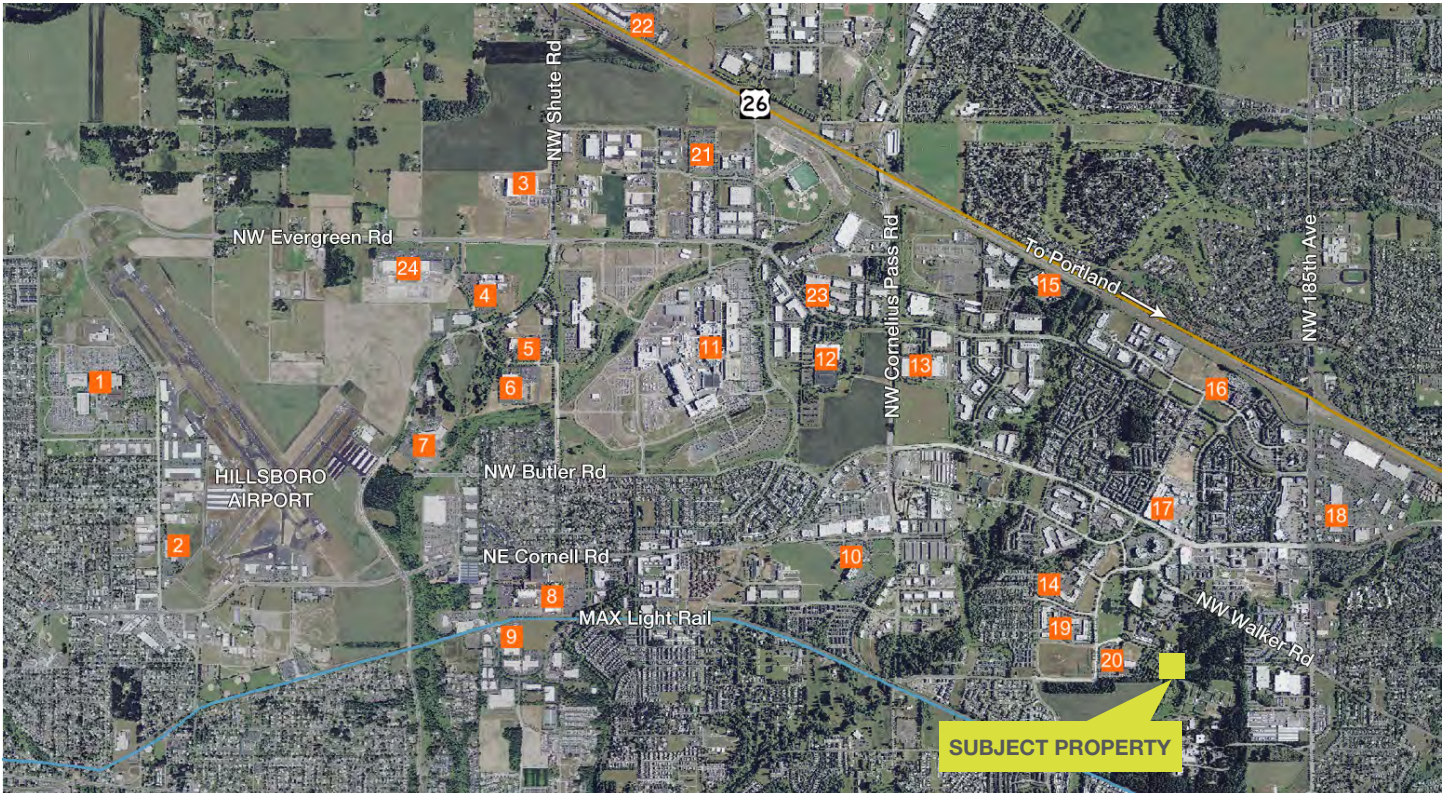
kiddermathews.com

This information supplied herein is from sources we deem reliable. It is provided without any representation, warranty or guarantee, expressed or implied as to its accuracy. Prospective Buyer or Tenant should conduct an independent investigation and verification of all matters deemed to be material, including, but not limited to, statements of income and expenses. Consult your attorney, accountant, or other professional advisor.



Available For Lease

Bronson Creek Building



Companies

- | | | | |
|----------------------------|-------------------------------|-------------------------------|---------------------------|
| 1. Intel Jones Farm | 8. Intel Hawthorn Farm | 15. Epson | 22. Former GM Call Center |
| 2. Rodgers Instruments | 9. Yahoo | 16. Standard Insurance | 23. Credence |
| 3. Genentech Campus | 10. Synopsis | 17. Streets of Tanasbourne | 24. SpectraWatt |
| 4. IDT | 11. Intel Ronler Acres | 18. Tanasbourne Town Center | 25. SolarWorld Campus |
| 5. RadiSys | 12. Maxim Integrated Products | 19. AmberGlen Business Park | |
| 6. FEI | 13. Sun Microsystems | 20. Planar | |
| 7. Tri Quint Semiconductor | 14. McAfee | 21. Oregon Graduate Institute | |

Contact

Keith Young
Senior Vice President
503.221.2275
kyoung@kiddermathews.com

Josh Schwartz
Associate
503.221.2284
jschwartz@kiddermathews.com

kiddermathews.com