

# MYERS WAY BLDG

10740 MYERS WAY S  
SEATTLE, WA

4,400 SF WITH YARD

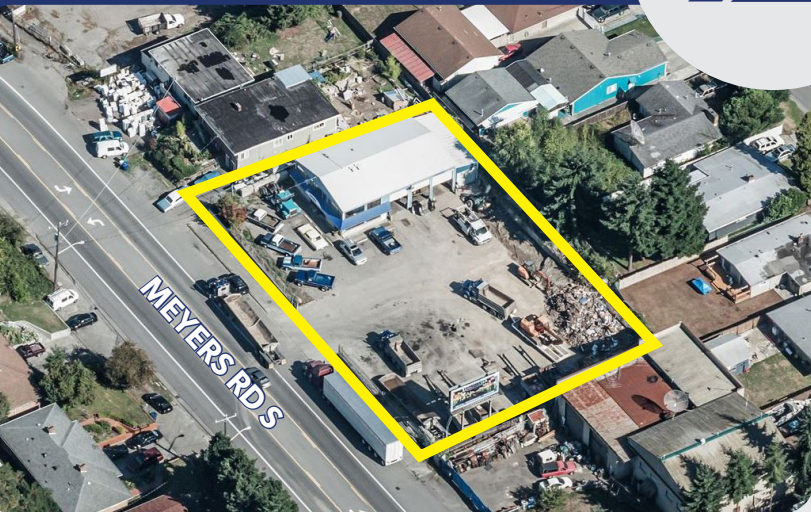
## FOR LEASE

STAND-ALONE  
BUILDING WITH YARD



### PROPERTY HIGHLIGHTS

- 4,400 SF WITH APPROX. 2,000 SF EXISTING OFFICE ON TWO FLOORS
- APPROX. 0.57 AC SITE
- STAND ALONE BUILDING WITH YARD SPACE
- OVERSIZED GRADE LEVEL LOADING
- FENCED AND SECURED LOT
- CLEAR HEIGHT 18'
- PLEASE CALL BROKERS FOR RATES



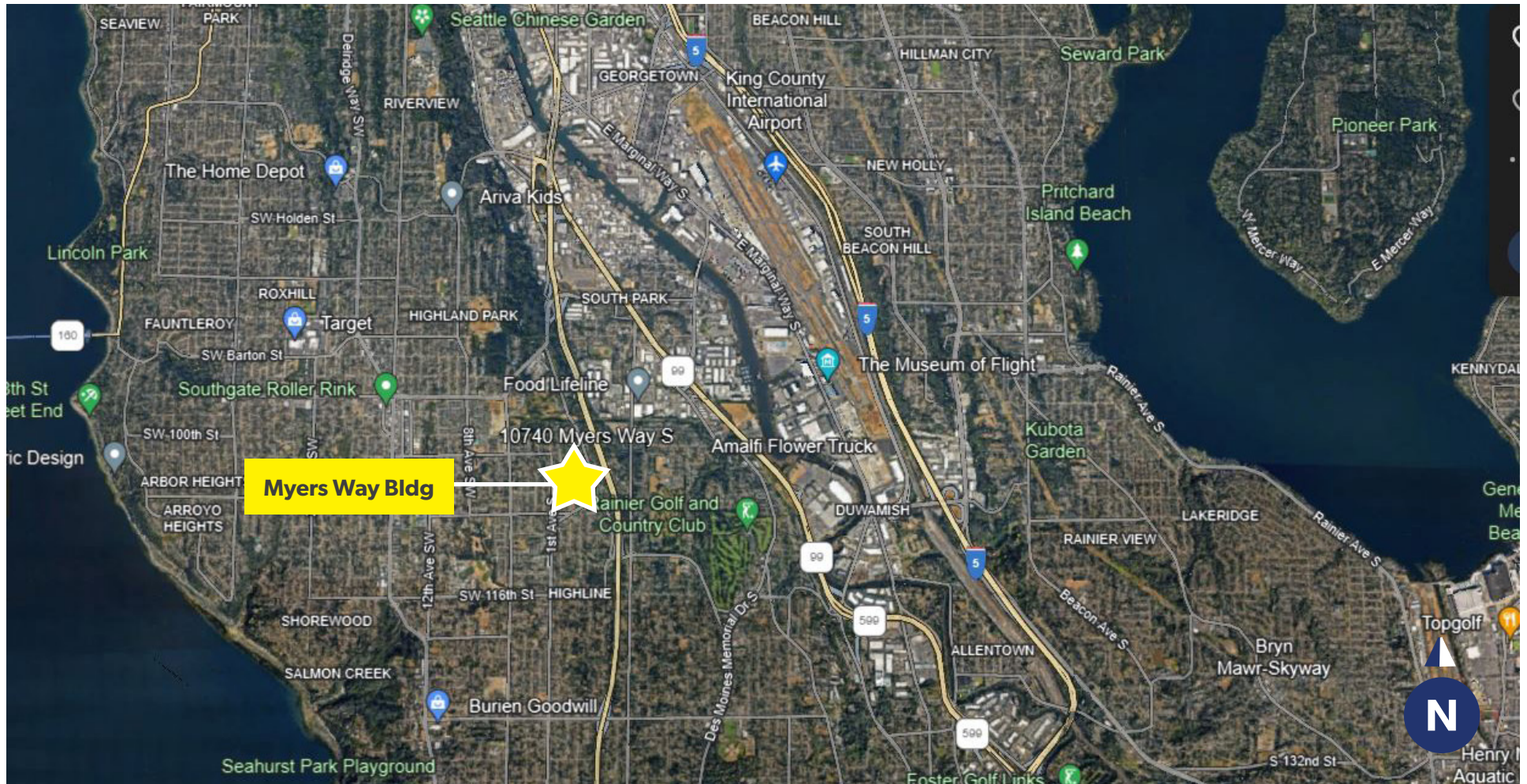
**JACK CRANE**  
(206) 258-3159  
jacklc@andoverco.com

**SHANE MAHVI**  
(206) 336-5338  
smahvi@andoverco.com

**JEFF CRANE**  
(206) 336-5336  
jcrane@andoverco.com

 **THE ANDOVER  
COMPANY, INC.**  
CORFAC INTERNATIONAL

# AERIAL VIEW



The information contained herein has been obtained from reliable sources, but is not guaranteed. A prospective buyer/tenant should verify each item relating to this property and all information contained herein.

**JACK CRANE**  
(206) 258-3159  
jacklc@andoverco.com

**SHANE MAHVI**  
(206) 336-5338  
smahvi@andoverco.com

**JEFF CRANE**  
(206) 336-5336  
jcrane@andoverco.com

 **THE ANDOVER  
COMPANY, INC.**  
CORFAC INTERNATIONAL