

# 3101 N. Clark

CHICAGO, IL 60657 • LAKEVIEW EAST

CORNER LOCATION  
SUPERIOR VISIBILITY



PLANNED FACADE AND LANDSCAPING IMPROVEMENTS

**Doug Renner**

312.275.3137

doug.renner@baumrealty.com

**Nicole Cardot**

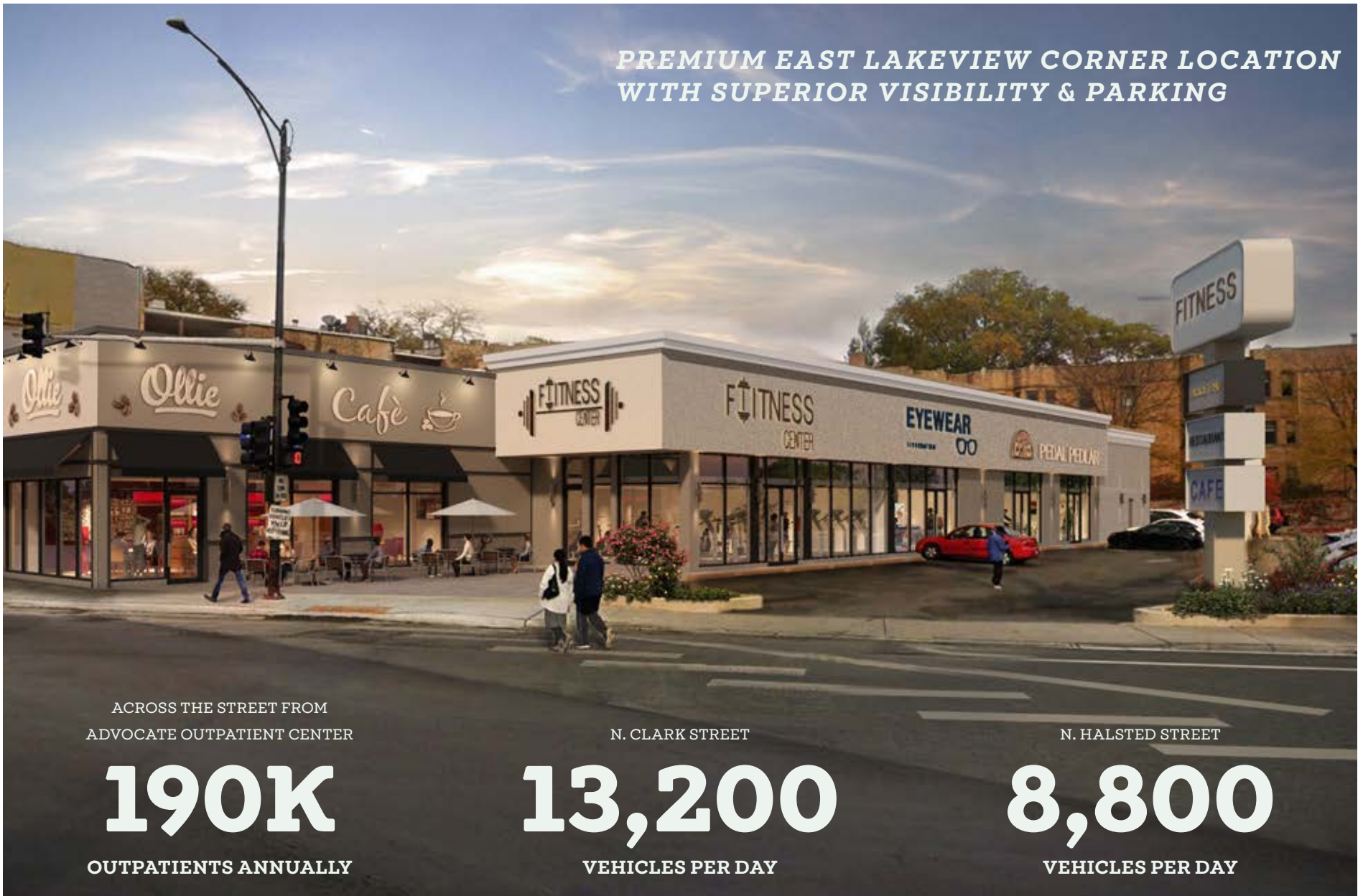
312.275.0371

nicole@baumrealty.com

Newcastle  
LIMITED

BAUM  
REALTY GROUP

PREMIUM EAST LAKEVIEW CORNER LOCATION  
WITH SUPERIOR VISIBILITY & PARKING



ACROSS THE STREET FROM  
ADVOCATE OUTPATIENT CENTER

N. CLARK STREET

N. HALSTED STREET

**190K**

OUTPATIENTS ANNUALLY

**13,200**

VEHICLES PER DAY

**8,800**

VEHICLES PER DAY

**Doug Renner**

312.275.3137

doug.renner@baumrealty.com

**Nicole Cardot**

312.275.0371

nicole@baumrealty.com



# 3101 N. Clark

CHICAGO, IL 60657 • LAKEVIEW EAST

## PROPERTY HIGHLIGHTS

- » Up to **±15,205 SF contiguous** with **multiple demising opportunities**
- » **±1950 SF former restaurant** space
- » Ample parking with **28 surface parking spaces** available
- » Significant **pylon signage** visible to Clark, Halsted and Barry
- » **Planned facade and landscaping improvements**
- » Across the street from Advocate Medical Center with over 4,200 employees, 790 students and approximately 190,000 outpatients per year
- » 6 minute walk to CTA Belmont 'L' Station (3.8 M annual riders)
- » Area retail include Petco, Ulta, Binny's, Mariano's, Bank of America, Michael's, Marshalls and DSW

## DEMOGRAPHIC SUMMARY

	0.25 MI	0.5 MI	1 MI
Average HHI	\$127,088	\$123,348	\$134,760
Daytime Population	9,281	32,636	87,949
Residential Population	5,962	33,148	95,099

**Doug Renner**

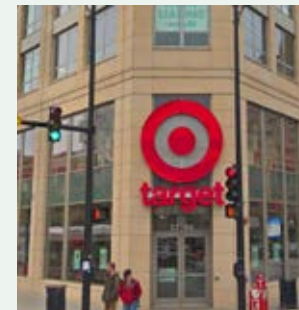
312.275.3137

doug.renner@baumrealty.com

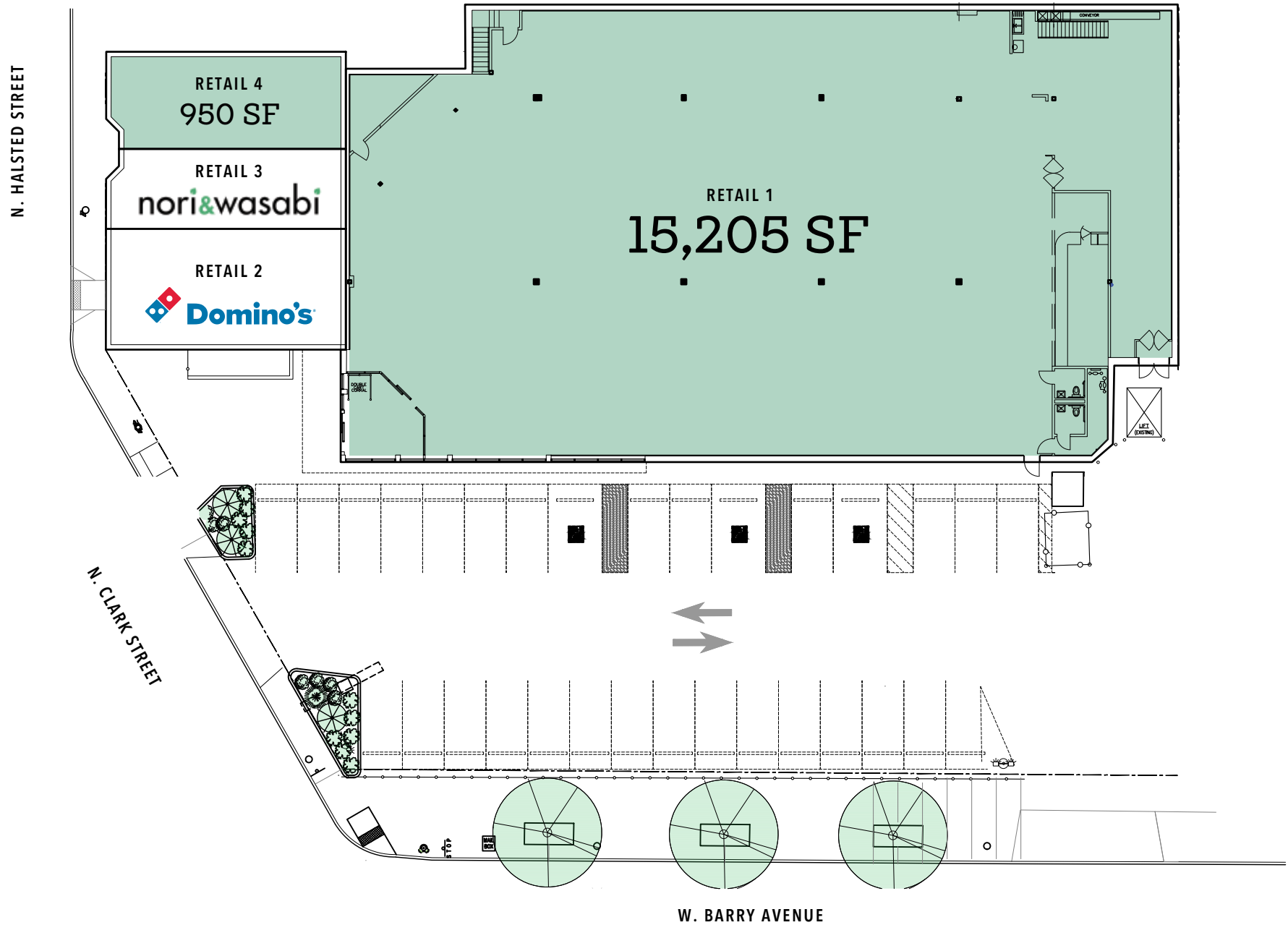
**Nicole Cardot**

312.275.0371

nicole@baumrealty.com

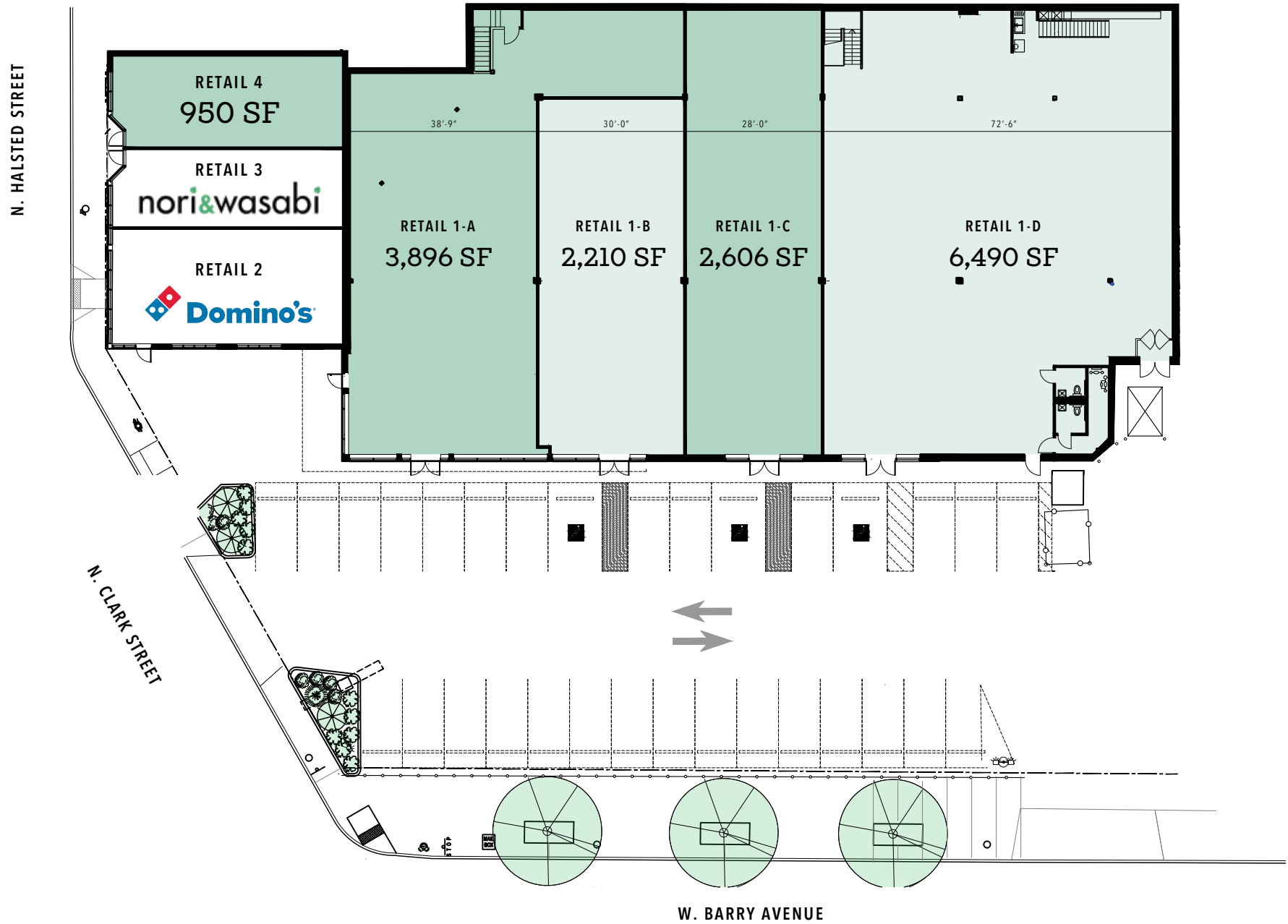


LAKEVIEW EAST



**Doug Renner**  
312.275.3137  
doug.renner@baumrealty.com

**Nicole Cardot**  
312.275.0371  
nicole@baumrealty.com



**Doug Renner**  
312.275.3137  
doug.renner@baumrealty.com

**Nicole Cardot**  
312.275.0371  
nicole@baumrealty.com



**Doug Renner**  
312.275.3137  
doug.renner@baumrealty.com

**Nicole Cardot**  
312.275.0371  
nicole@baumrealty.com

NEIGHBORHOOD CO-TENANTS



**Doug Renner**

312.275.3137

doug.renner@baumrealty.com

**Nicole Cardot**

312.275.0371

nicole@baumrealty.com





# 3101 N. Clark

CHICAGO, IL 60657 • LAKEVIEW EAST

For leasing information contact:

**Doug Renner**

312.275.3137

[doug.renner@baumrealty.com](mailto:doug.renner@baumrealty.com)

**Nicole Cardot**

312.275.0371

[nicole@baumrealty.com](mailto:nicole@baumrealty.com)

Newcastle  
LIMITED

BAUM  
REALTY GROUP

© 2020 All information supplied is from sources deemed reliable and is furnished subject to errors, omissions, modifications, removal of the listing from sale or lease, and to any listing conditions, including the rates and manner of payment of commissions for particular offerings, the terms of which are available to principals or duly licensed brokers. This information may include estimates and projections with respect to future events, and these future events may or may not actually occur. Such estimates and projections reflect various assumptions concerning anticipated results. While we believe these assumptions are reasonable, there can be no assurance that any of these estimates and projections will prove to have been correct. Therefore, actual results may vary materially from these forward-thinking estimates and projections. Any square footage dimensions set forth are approximate.