

FOR LEASE

WILLIAM PACA INDUSTRIAL PARK

1308

CONTINENTAL DRIVE
Abingdon, MD 21009



BUILDING SPECIFICATIONS

- + 30,943 SF Available
- + Suites D-F: 15,760 SF
2,500 SF of office
3 Docks
200 AMPS 120/208V
- + Suites G-I: 15,237 SF
3,950 SF of office
3 Docks
600 AMPS 120/208V
- + 19' clear ceiling height
- + 33' x 40' column spacing
- + Brick and block construction
- + Gas heat
- + Wet sprinkler
- + 1 mile to I-95



CONTACT US

JUSTIN MOHLER

Senior Vice President
+1 410 244 3116
justin.mohler@cbre.com

JON CASELLA

Senior Vice President
+1 410 244 3127
jonathan.casella@cbre.com

CBRE, Inc.

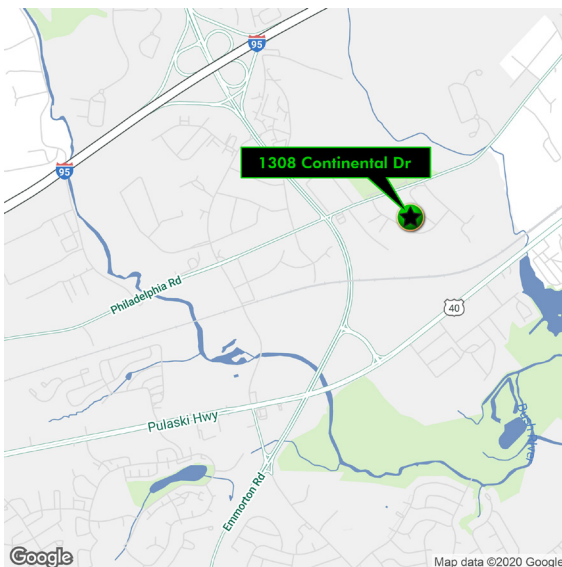
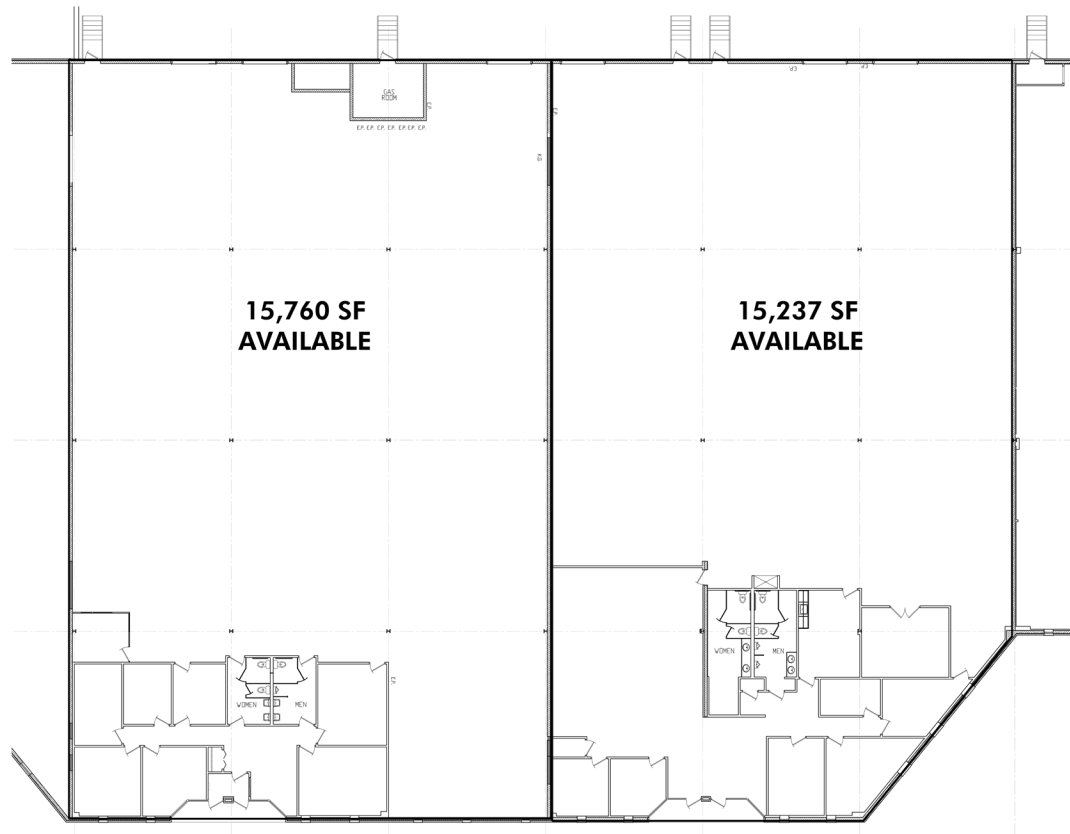
100 E Pratt Street
Suite 1700
Baltimore, MD 21202

www.cbre.com/baltimore

CBRE

FOR LEASE WAREHOUSE SPACE

1308
CONTINENTAL DRIVE
Abingdon, MD 21009



TRAVEL DISTANCES

- 1.0 mile to I-95
- 9 miles to Aberdeen Proving Ground
- 13 miles to I-695
- 20 miles to the Port of Baltimore
- 34 miles to BWI Airport

© 2020 CBRE, Inc. The information contained in this document has been obtained from sources believed reliable. While CBRE, Inc. does not doubt its accuracy, CBRE, Inc. has not verified it and makes no guarantee, warranty or representation about it. It is your responsibility to independently confirm its accuracy and completeness. Any projections, opinions, assumptions or estimates used are for example only and do not represent the current or future performance of the property. The value of this transaction to you depends on tax and other factors which should be evaluated by your tax, financial and legal advisors. You and your advisors should conduct a careful, independent investigation of the property to determine to your satisfaction the suitability of the property for your needs. Photos herein are the property of their respective owners and use of these images without the express written consent of the owner is prohibited.