

For Lease

605 MARKET STREET South Financial District

Location! Location! Location!



Suite 350: Private Offices with Glass Façade



Suite 1111: Private Office

Presented By:

Jay D. Shaffer

(415) 590-7871

jshaffer@coltoncommercialsf.com

License #: 01444640

Bradley L. Colton

(415) 834-1600

bcolton@coltoncommercialsf.com

License #: 00805116



530 Bush Street, Suite 800, San Francisco, CA 94108

P: 415.834.1600 • F: 415.834.1601 • www.coltoncommercialsf.com

For Lease

605 MARKET STREET South Financial District



BUILDING HIGHLIGHTS:

- Built in 1917 and recently renovated in late 1980's
- Great Natural Light
- Operable Windows
- Excellent location in South Financial District
- Close to Public Transportation
- Steps to Montgomery BART Station
- Competitive Rental Rates
- On Site Management
- Lobby Security Guards
- 24 Hour Access

SUITE	SQUARE FEET	DATE AVAILABLE	RATE per SF/Year*	TERM	COMMENTS
305	2,201 RSF +/-	NOW	Negotiable	3-5 Years	Office intensive space with 1 conference room, 4 private offices, small open area, kitchenette, private bathroom and storage/IT room.
1111	793 RSF +/-	June 1, 2020	Negotiable*	3-5 Years	Office intensive space with good natural light and operable windows. 3 offices, 1 conference room and small open area.

*Rate is NNN

For Further Information, please contact:

Jay D. Shaffer
(415) 590-7871
jshaffer@coltoncommercialsf.com
License #: 01444640

Bradley L. Colton
(415) 834-1600
bcolton@coltoncommercialsf.com
License #: 00805116



The foregoing is based upon information provided by others which we believe is accurate, however, no guarantee, warranty or representation is made. We recommend that all interested parties independently verify its accuracy and completeness. As well, any projections, assumptions, opinions, or estimates are used for example only and do not represent the current or future performance of the identified property. Your tax, financial, legal and toxic substance advisors should conduct a careful independent investigation of the property and its suitability for your needs, including land use limitations. The property is subject to prior lease, sale, change in price, or withdrawal from the market without notice.

For Lease

605 MARKET STREET South Financial District

NEIGHBORHOOD MAP & AMENITIES



P = Parking Garage

For Further Information, please contact:

Jay D. Shaffer

(415) 590-7871

jshaffer@coltoncommercialsf.com

License #: 01444640

Bradley L. Colton

(415) 834-1600

bcolton@coltoncommercialsf.com

License #: 00805116

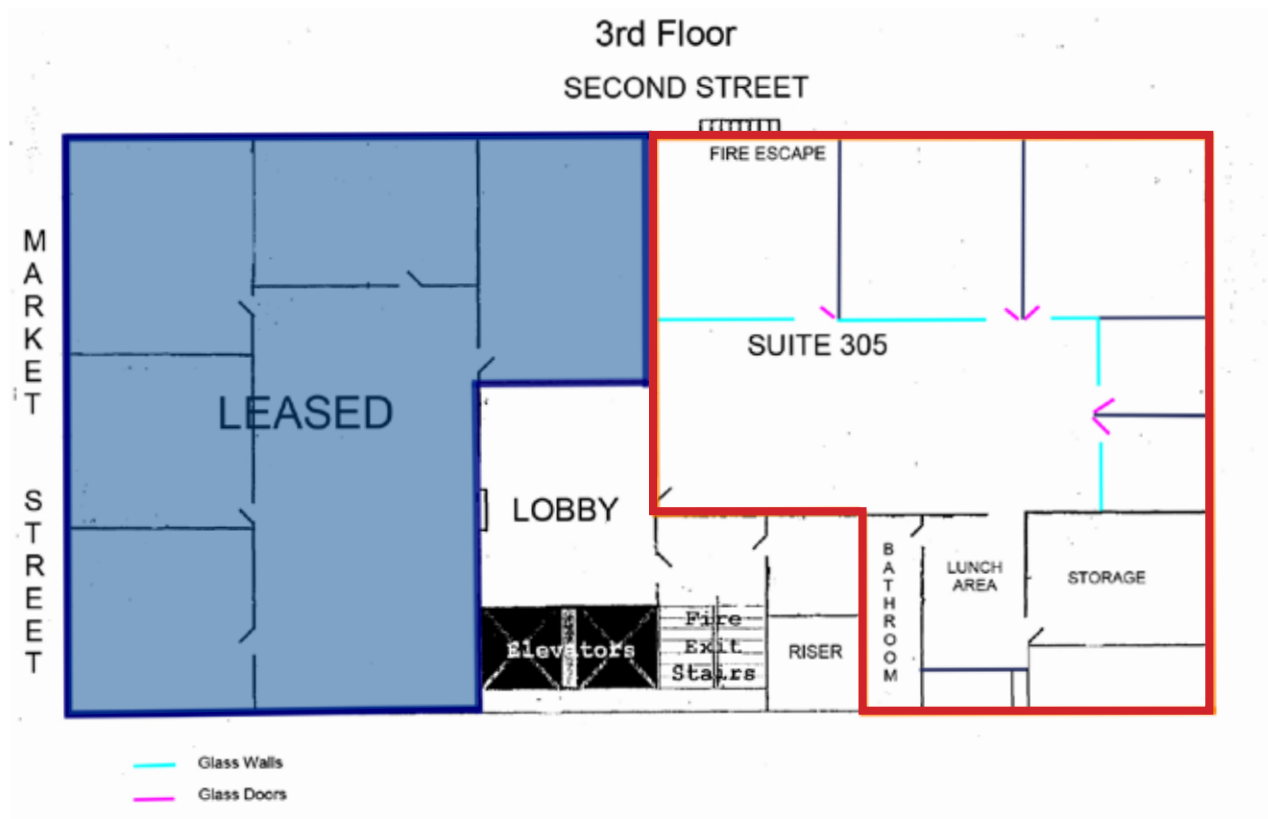


The foregoing is based upon information provided by others which we believe is accurate, however, no guarantee, warranty or representation is made. We recommend that all interested parties independently verify its accuracy and completeness. As well, any projections, assumptions, opinions, or estimates are used for example only and do not represent the current or future performance of the identified property. Your tax, financial, legal and toxic substance advisors should conduct a careful independent investigation of the property and its suitability for your needs, including land use limitations. The property is subject to prior lease, sale, change in price, or withdrawal from the market without notice.

For Lease

605 MARKET STREET South Financial District

SUITE 401 FLOORPLAN



 = Available Space

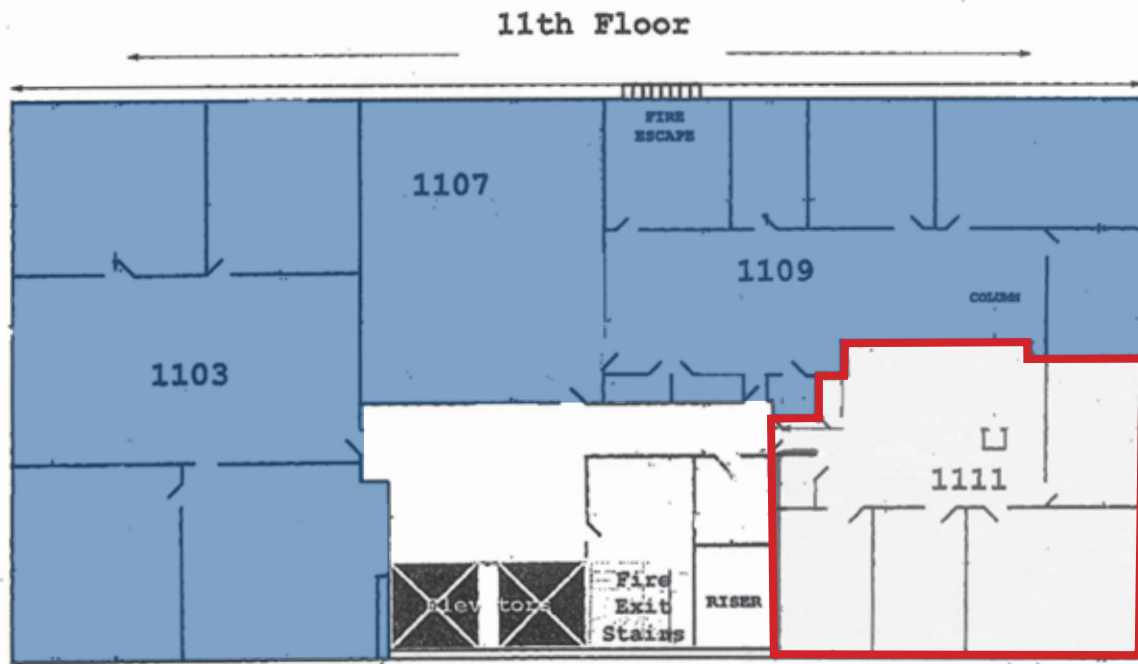
 = Leased Space

Floor plan is not to scale and actual layout may vary. Tenant advised to conduct its own independent investigation to confirm actual layout. No warranties nor representations are made herein.

For Lease

605 MARKET STREET South Financial District

SUITE 1111 FLOORPLAN



 = Available Space

 = Leased Space

Floor plan is not to scale and actual layout may vary. Tenant advised to conduct its own independent investigation to confirm actual layout. No warranties nor representations are made herein.