



# CALHOUN BEACH CLUB

2900 Thomas Ave S, Minneapolis, MN 55416

**OFFICE SPACE FOR LEASE**

**AVISON  
YOUNG**

Brian Helmken  
Executive Vice President  
612.351.4138

[brian.helmken@avisonyoung.com](mailto:brian.helmken@avisonyoung.com)

Erik Heltne  
Senior Associate  
612.351.4139

[erik.heltne@avisonyoung.com](mailto:erik.heltne@avisonyoung.com)



### OFFERING SUMMARY

<b>Available Space:</b>	Suite #1 1600 SF, 2nd Floor Suite #2 3900 SF 2nd Floor Suite #3 1300 SF, Main Floor Suite #4 700 SF, Main Floor
<b>Lease Rate</b>	\$30.00, Plus Utilities
<b>Year Built</b>	1999

### PROPERTY HIGHLIGHTS

- Urban Eatery restaurant on site
- Attached ramp parking
- Calhoun Beach Club Fitness Center
- Abundant walkable amenities
- On site professional management
- Direct Access to Midtown Greenway Bike Trail
- Signage opportunities



Platinum member

#### Brian Helmken

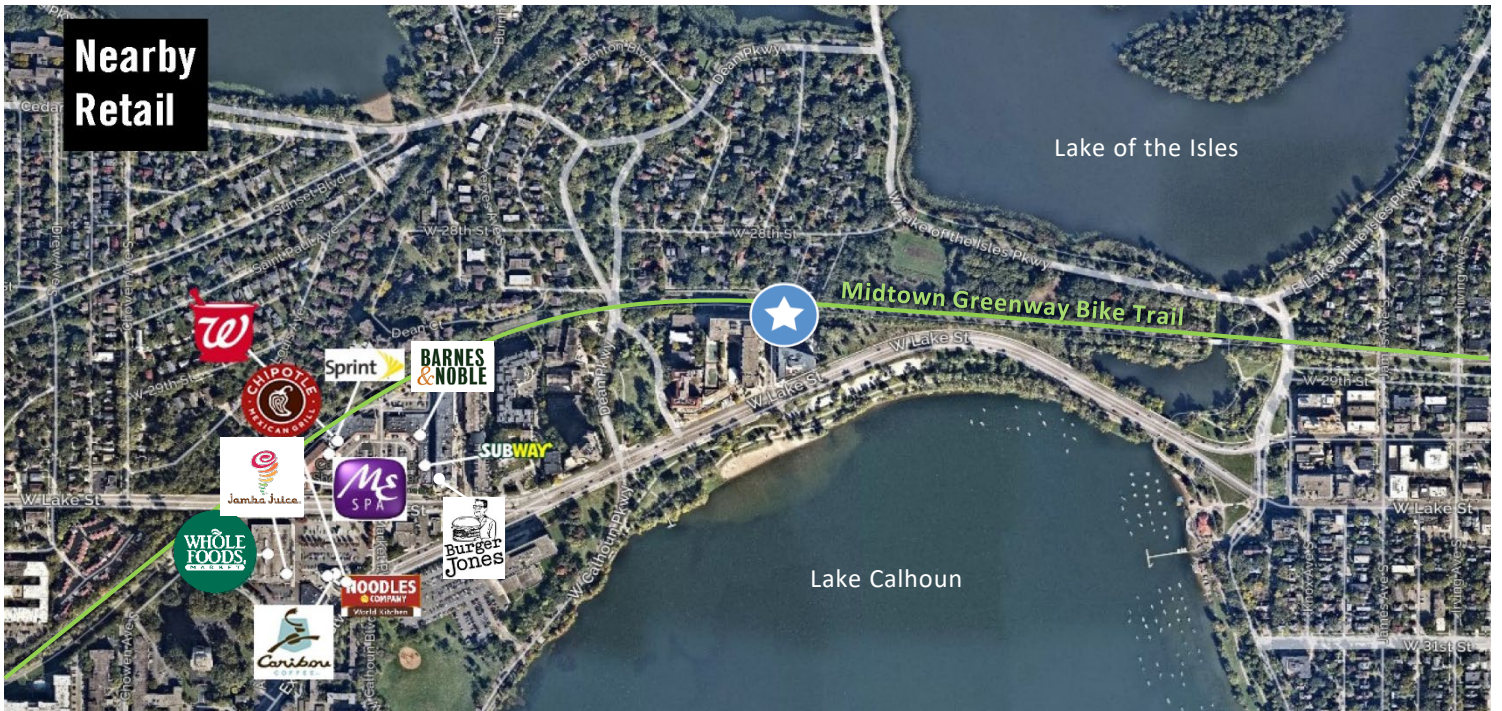
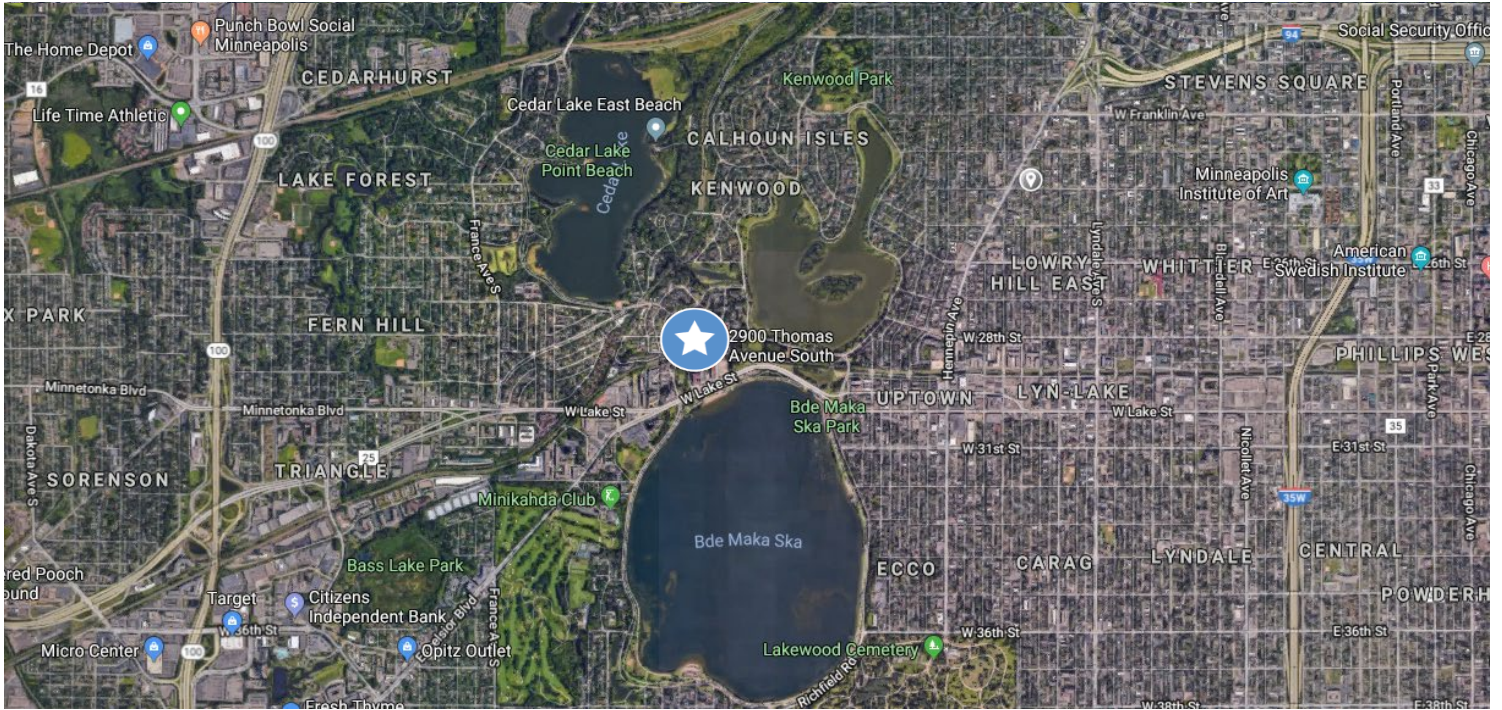
612.351.4138

Brian.Helmken@avisonyoung.com

#### Erik Heltne

612.351.4139

Erik.Heltne@avisonyoung.com



**Brian Helmken**

612.351.4138

Brian.Helmken@avisonyoung.com

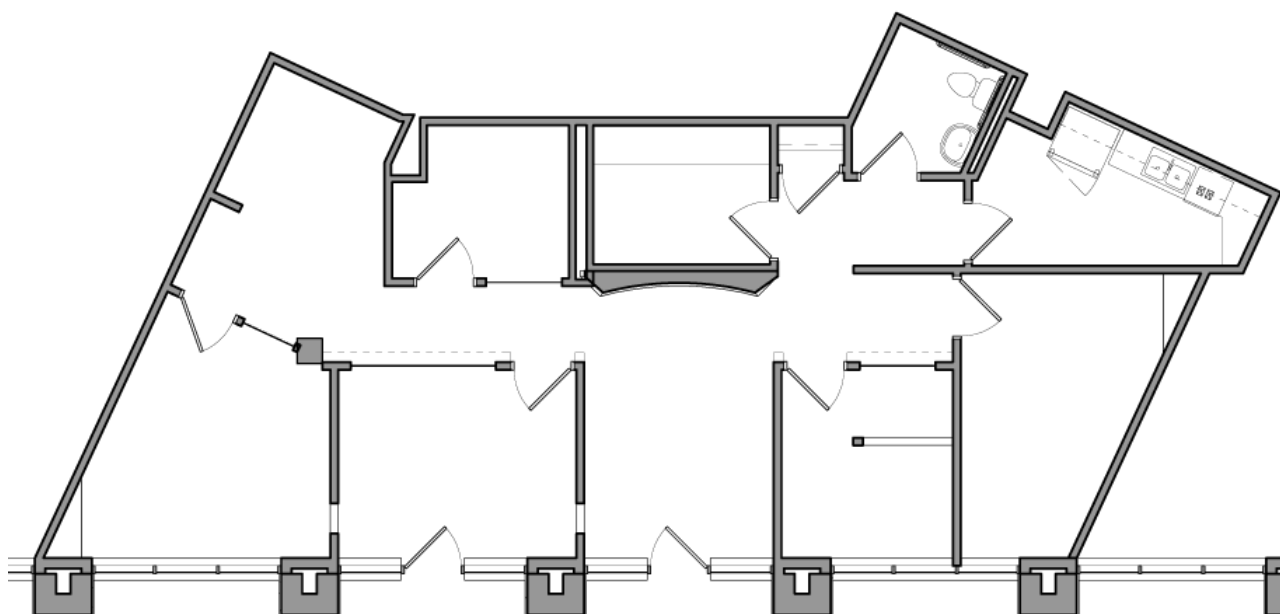
**Erik Heltne**

612.351.4139

Erik.Heltne@avisonyoung.com

This message and any attachments are confidential. If the reader is not the intended recipient, you are hereby notified that any dissemination, distribution or copying of this e-mail is strictly prohibited. If you have received this e-mail in error, please notify the sender immediately by return e-mail. Internet communications cannot be guaranteed to be secure or error free as information could be intercepted, corrupted, lost, arrive late or contain viruses. The sender result of Internet transmission.

### SUITE 102



### SUITE 310

