

# HERITAGE PARK

872 – 920 West Heritage Park Boulevard, Layton, Utah 84041



**LEASE RATE: \$18.75 PSF FULL SERVICE**

# FOR LEASE

## PROPERTY FEATURES

- Former Dental Office Available
- Approximately 1,169 – 20,030 SF Available
- Executive Suites: 200 – 500 SF
- In the Center of Layton's Commercial Area
- Close to Restaurants & Layton Hills Mall
- Easy I-15 Access
- Parking Stalls 4.00/1,000
- In Suite Janitorial Not Included

FOR MORE  
INFORMATION  
CONTACT

CHRIS FALK, CCIM, SIOR  
801.416.1024  
chris.falk@ngkf.com

BRAXTON WILLIE, CCIM  
801.416.1050  
braxton.willie@ngkf.com



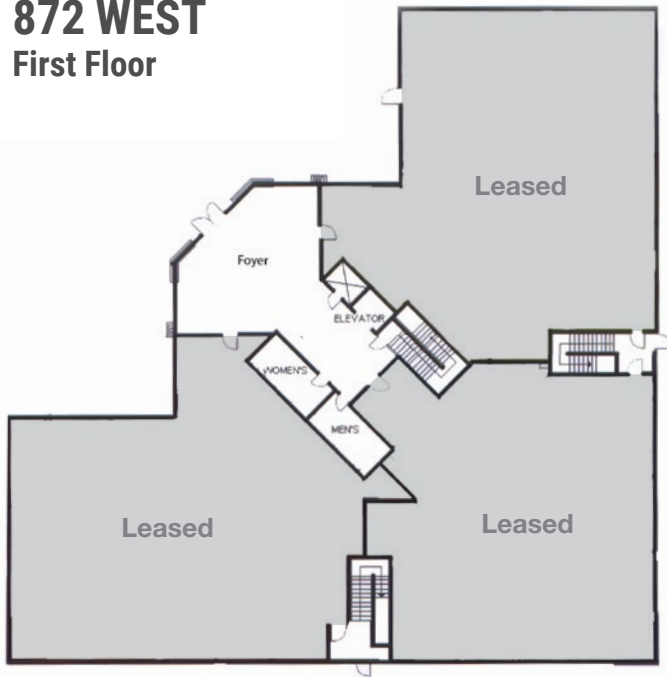
1755 East 1450 South, Suite 100 | Clearfield, Utah 84015 | 801.927.2000 | [www.ngacres.com](http://www.ngacres.com)

This document has been prepared by Newmark Knight Frank for advertising and general information purposes only. While the information contained herein has been obtained from what are believed to be reliable sources, the same has not been verified for accuracy or completeness. Newmark Knight Frank accepts no responsibility or liability for the information contained in this document. Any interested party should conduct an independent investigation to verify the information contained herein.

# HERITAGE PARK

872 – 920 West Heritage Park Boulevard, Layton, Utah 84041

## 872 WEST First Floor

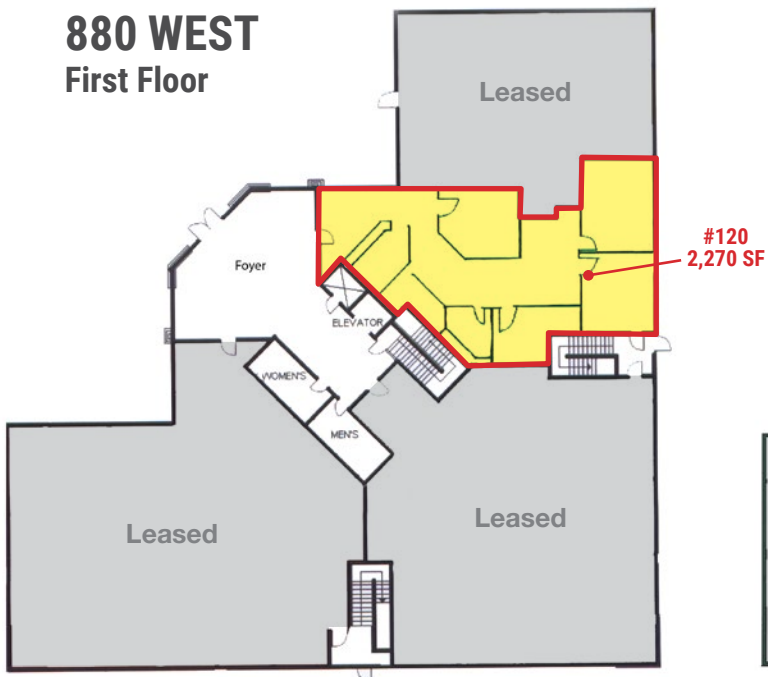


## Second Floor

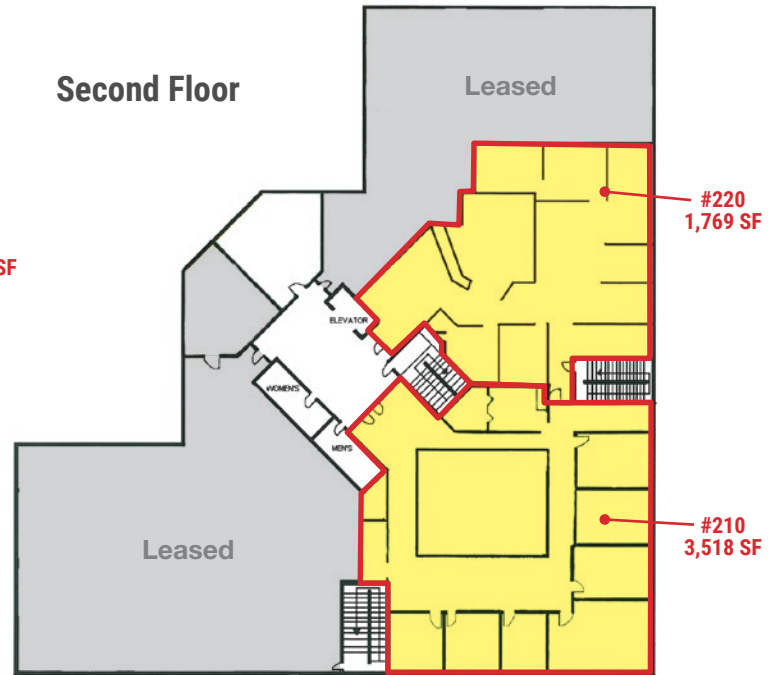


5,595 Contiguous SF Available

## 880 WEST First Floor



## Second Floor

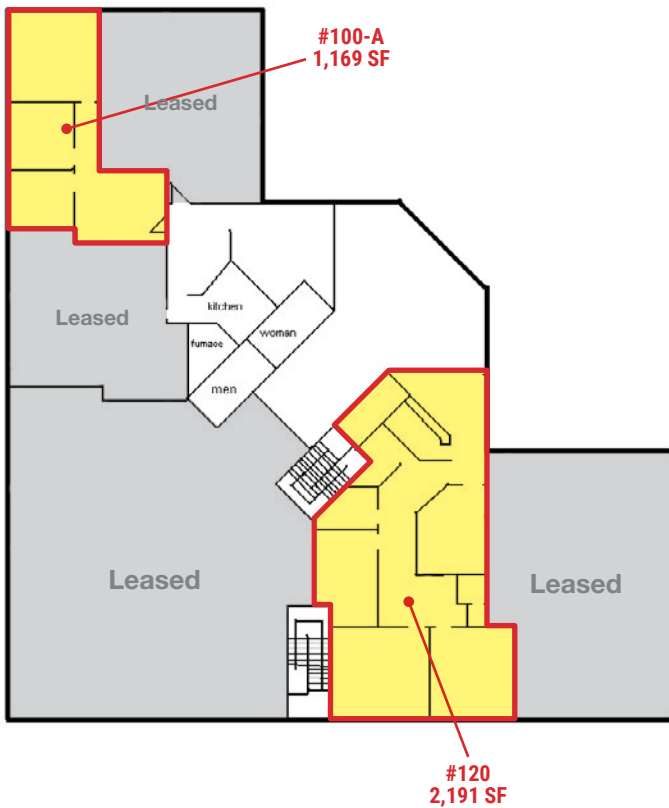


5,287 Contiguous SF Available

# HERITAGE PARK

872 – 920 West Heritage Park Boulevard, Layton, Utah 84041

## 920 WEST First Floor



## Second Floor



# HERITAGE PARK

872 – 920 West Heritage Park Boulevard, Layton, Utah 84041

