

PAD SITES AVAILABLE



Approximately 3 Acres Available (Will Divide)
150 Highway & 291 Highway (NEQ), Lee's Summit, Missouri



Estimated Population
62,100

Average Household Income
\$91,812

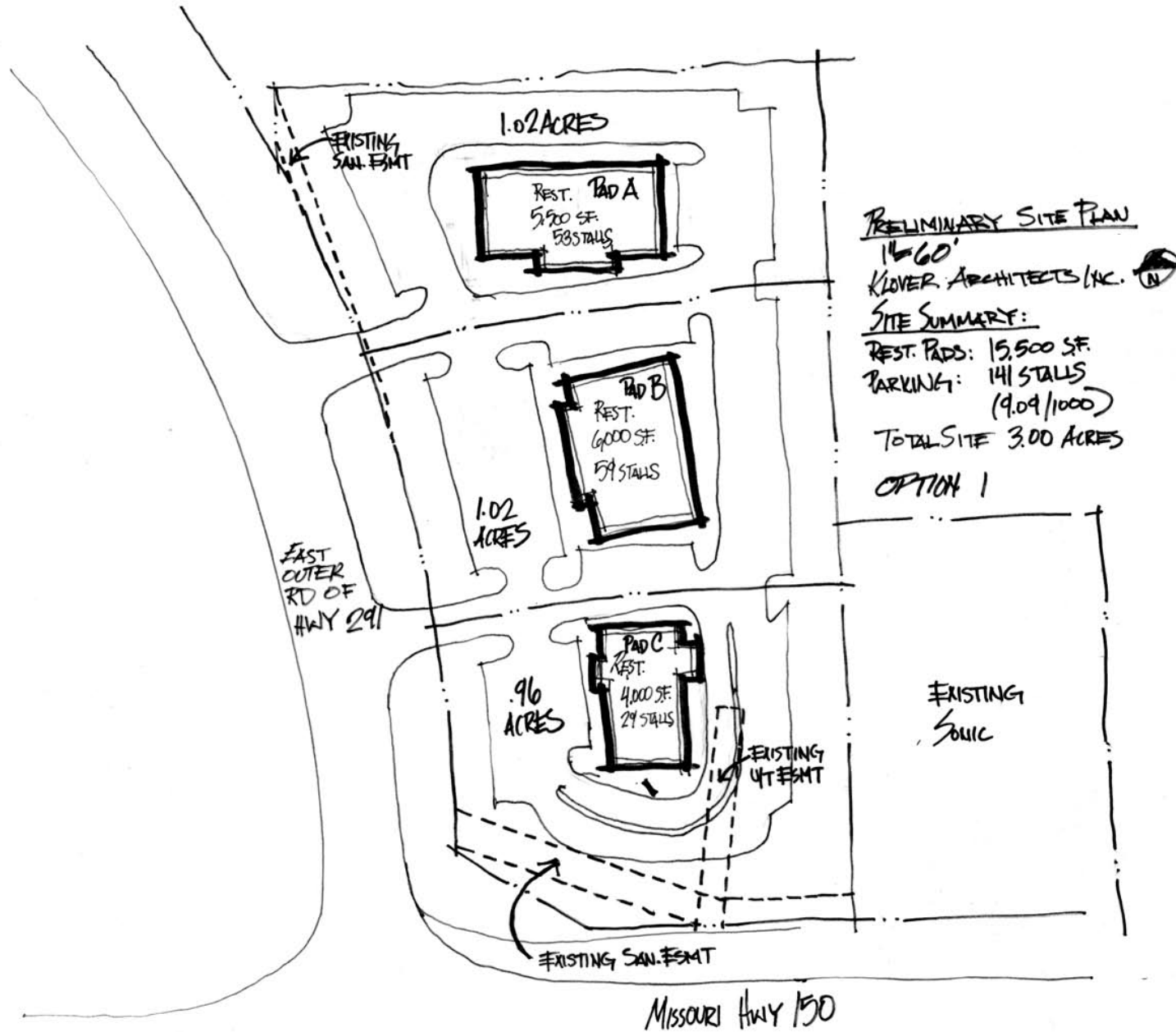
Five Mile Radius

- Excellent site for restaurant, banks, and retail
- One of the fastest growing areas in Lee's Summit
- Tremendous visibility and frontage along Highway 150
- All utilities to site
- Master planned for commercial development
- Adjacent to planned major retail development to the north and south

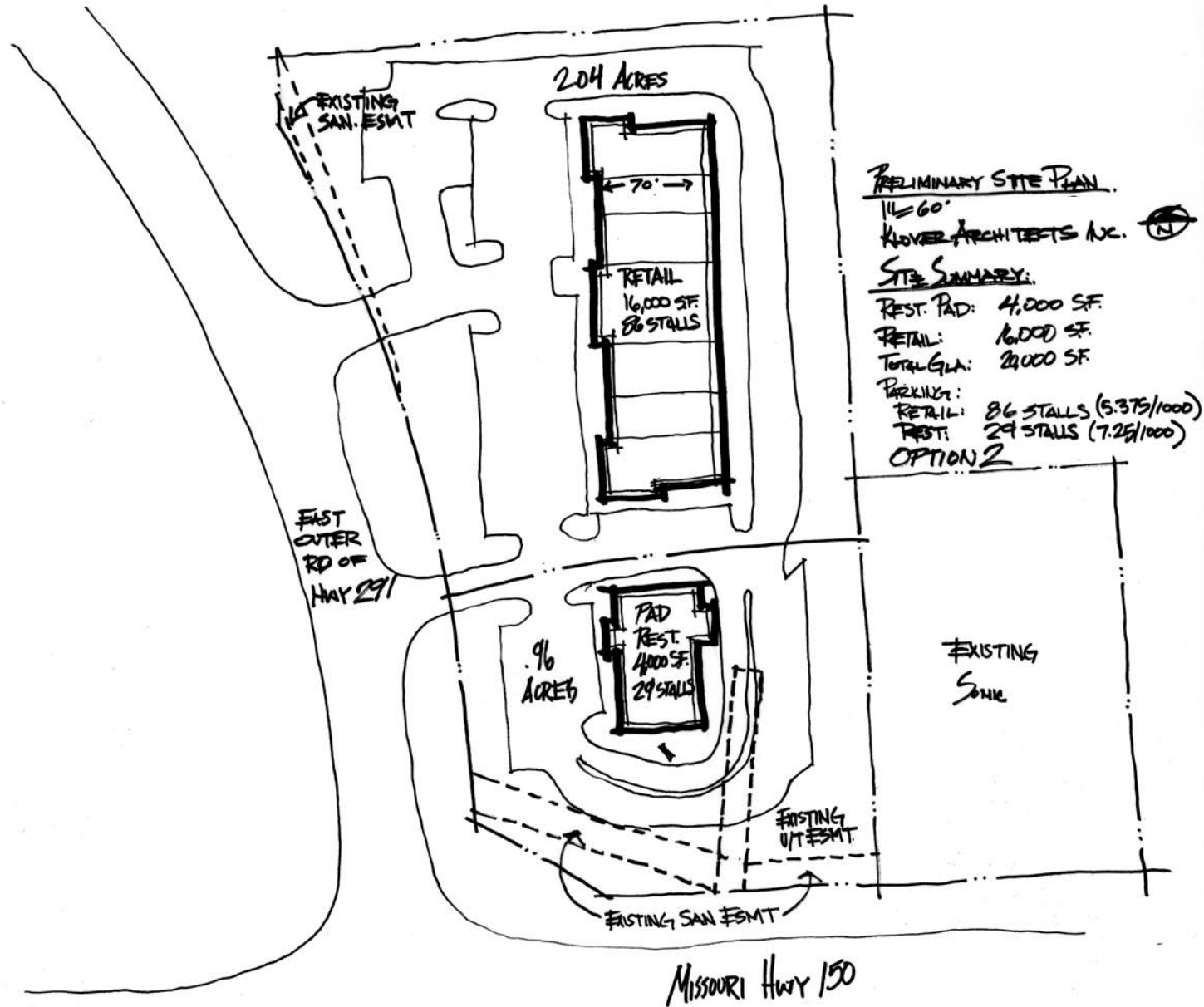
150 Highway & 291 Highway (NEQ), Lee's Summit, Missouri

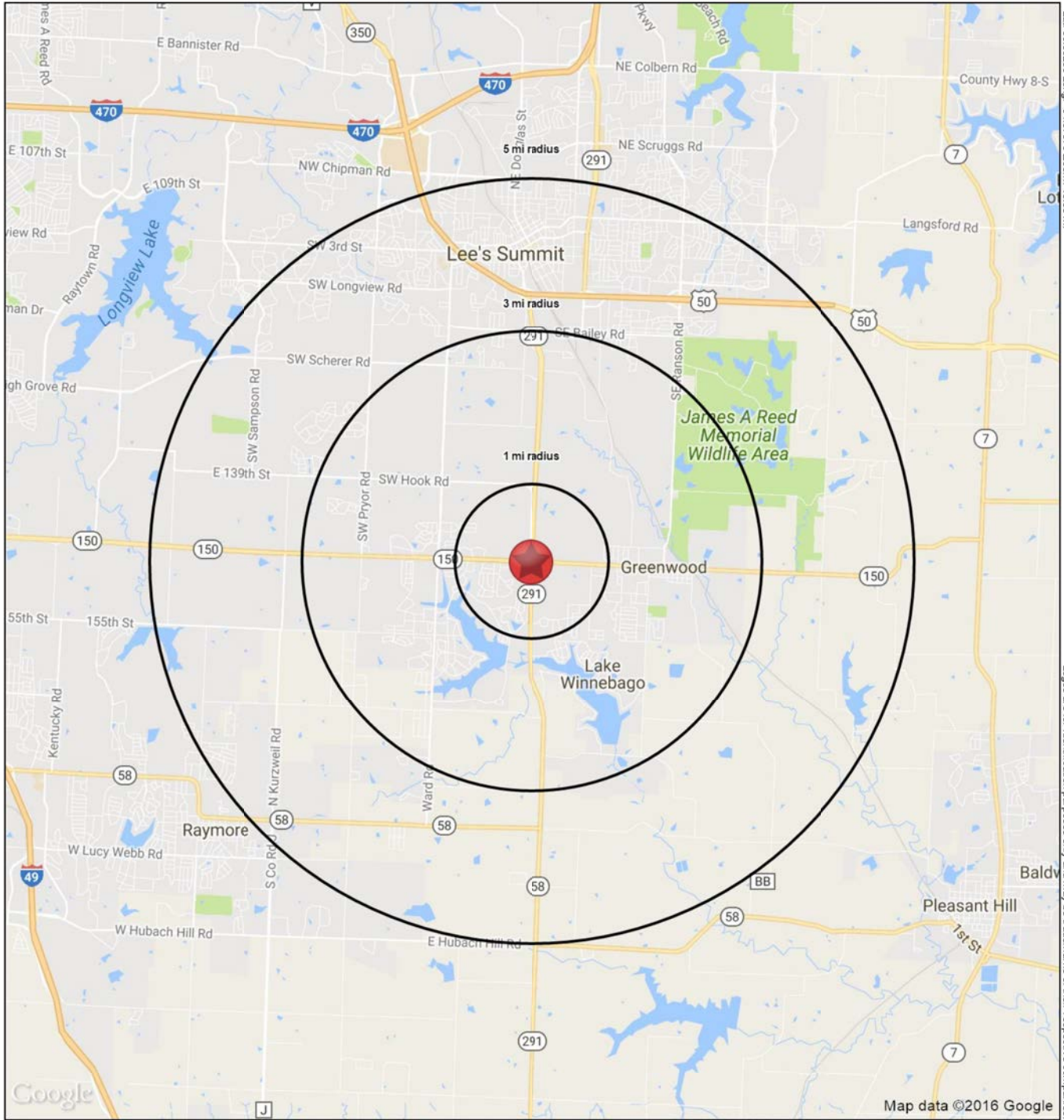


150 Highway & 291 Highway (NEQ), Lee's Summit, Missouri



150 Highway & 291 Highway (NEQ), Lee's Summit, Missouri





Lat: 38.852501 Long: -94.37579 Zoom: 13.80 mi
Logos are for identification purposes only and may be trademarks of their respective companies.

150 Highway & 291 Highway

Lee's Summit, MO 64082

July 2016

This map was produced using data from private and government sources deemed to be reliable. The information herein is provided without representation or warranty

SUMMARY PROFILE

2000-2010 Census, 2016 Estimates with 2021 Projections

Calculated using Weighted Block Centroid from Block Groups

Lat/Lon: 38.8526/-94.3758

RS1

150 Highway & 291 Highway Lee's Summit, MO 64082		1 mi radius	3 mi radius	5 mi radius
POPULATION	2016 Estimated Population	5,084	20,766	62,100
	2021 Projected Population	5,144	20,981	62,574
	2010 Census Population	5,200	20,658	62,156
	2000 Census Population	3,167	12,243	47,575
	Projected Annual Growth 2016 to 2021	0.2%	0.2%	0.2%
	Historical Annual Growth 2000 to 2016	3.8%	4.4%	1.9%
	2016 Median Age	37.9	37.4	37.6
HOUSEHOLDS	2016 Estimated Households	1,813	7,581	23,917
	2021 Projected Households	1,869	7,814	24,518
	2010 Census Households	1,805	7,348	23,328
	2000 Census Households	1,082	4,203	18,048
	Projected Annual Growth 2016 to 2021	0.6%	0.6%	0.5%
	Historical Annual Growth 2000 to 2016	4.2%	5.0%	2.0%
RACE AND ETHNICITY	2016 Estimated White	87.3%	88.3%	87.7%
	2016 Estimated Black or African American	7.6%	7.1%	7.0%
	2016 Estimated Asian or Pacific Islander	2.1%	1.6%	1.6%
	2016 Estimated American Indian or Native Alaskan	0.3%	0.3%	0.3%
	2016 Estimated Other Races	2.7%	2.7%	3.4%
	2016 Estimated Hispanic	3.5%	3.3%	4.0%
INCOME	2016 Estimated Average Household Income	\$99,031	\$104,321	\$91,812
	2016 Estimated Median Household Income	\$98,492	\$93,671	\$81,009
	2016 Estimated Per Capita Income	\$35,311	\$38,087	\$35,384
EDUCATION (AGE 25+)	2016 Estimated Elementary (Grade Level 0 to 8)	0.5%	0.5%	1.0%
	2016 Estimated Some High School (Grade Level 9 to 11)	3.2%	3.2%	3.2%
	2016 Estimated High School Graduate	19.3%	20.1%	23.9%
	2016 Estimated Some College	23.9%	24.0%	24.3%
	2016 Estimated Associates Degree Only	12.4%	10.0%	9.0%
	2016 Estimated Bachelors Degree Only	29.1%	28.7%	25.5%
	2016 Estimated Graduate Degree	11.4%	13.4%	13.1%
BUSINESS	2016 Estimated Total Businesses	125	460	2,157
	2016 Estimated Total Employees	1,156	4,953	22,343
	2016 Estimated Employee Population per Business	9.3	10.8	10.4
	2016 Estimated Residential Population per Business	40.8	45.2	28.8

This report was produced using data from private and government sources deemed to be reliable. The information herein is provided without representation or warranty.