

FOR LEASE

# ENCINO COMMONS

## RETAIL, MEDICAL, AND OFFICE FOR LEASE - PLAZA DE ORO

17151-253 Ventura Boulevard, Encino, CA 91316



MICHAEL HAIM SHARON | SENIOR VICE PRESIDENT

(818) 697-9385 · msharon@illicre.com · DRE#01495419

5990 Sepulveda Blvd., Ste. 600 - Sherman Oaks, CA 91411 - 818.501.2212/Phone - 818.501.2202/Fax - [www.illicre.com](http://www.illicre.com) - DRE #01834124

This information has been secured from sources we believe to be reliable, but we make no representations or warranties, expressed or implied, as to the accuracy of the information. References to square footage are approximate. References to neighboring retailers are subject to change, and may not be adjacent to the vacancy being marketed either prior to, during, or after leases are signed. Lessee must verify the information and bears all risk for any inaccuracies.

FOLLOW US





FOR LEASE

# ENCINO COMMONS

## RETAIL, MEDICAL, AND OFFICE FOR LEASE - PLAZA DE ORO

17151-253 Ventura Boulevard, Encino, CA 91316

### FEATURES

- High image neighborhood shopping center
- Great for medical, retail, office requirements
- Ground floor suites available
- Elevator access for 2nd floor suites
- Recessed lighting
- Excellent signage and visibility on Ventura Boulevard
- Lots of natural light
- Abundant convenient parking in close proximity to the premises
- Truck delivery access
- Walk score ( 75) - very walkable

### AREA AMENITIES

- Prime Encino Commons location on Ventura Boulevard
- Located in the Business Improvement District Corridor
- Heavy pedestrian and automobile traffic
- Located in front of a signalized intersection
- Located at the heart of Encino Commons on Ventura Boulevard
- Neighboring tenants include: Michael's PetSmart, Laemmle Theaters, Menchie's, Verizon, T-mobile, Chilis, Yogurtland, The Habit Burger, Sports Clips, Chase Bank, Wells Fargo, Jamba Juice, Starbucks, CVS, and Coffee Bean
- Close proximity to the 101 FWY

### RENTAL RATE

- 17237-B Ventura Blvd ±2,283 SF \$3.95 PSF + \$0.76 PSF NNN



**MICHAEL HAIM SHARON** | SENIOR VICE PRESIDENT

(818) 697-9385 · msharon@illicre.com · DRE#01495419

5990 Sepulveda Blvd., Ste. 600 - Sherman Oaks, CA 91411 - 818.501.2212/Phone - 818.501.2202/Fax - [www.illicre.com](http://www.illicre.com) - DRE #01834124

This information has been secured from sources we believe to be reliable, but we make no representations or warranties, expressed or implied, as to the accuracy of the information. References to square footage are approximate. References to neighboring retailers are subject to change, and may not be adjacent to the vacancy being marketed either prior to, during, or after leases are signed. Lessee must verify the information and bears all risk for any inaccuracies.

**FOLLOW US**



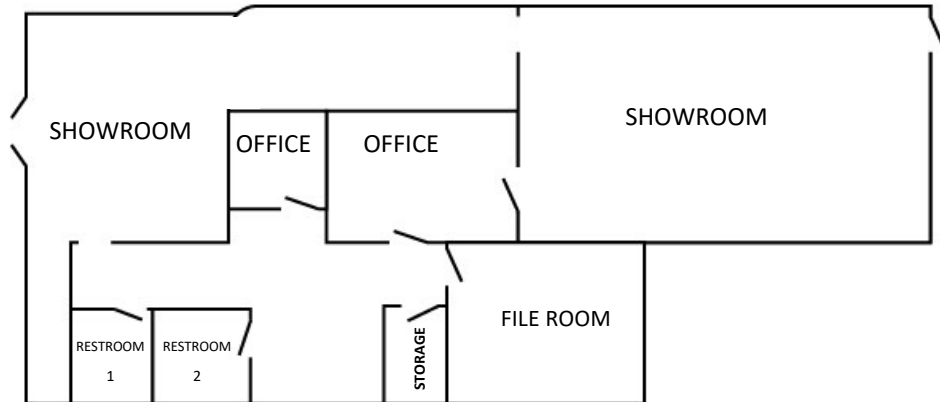
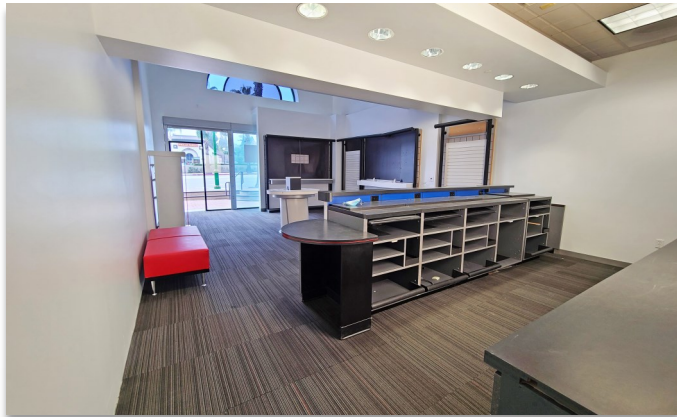
FOR LEASE

# ENCINO COMMONS

## RETAIL, MEDICAL, AND OFFICE FOR LEASE - PLAZA DE ORO

17151-253 Ventura Boulevard, Encino, CA 91316

17237B: ±2,283 SF | \$3.95 PSF + 0.76 PSF NNN | FORMER VERIZON



MICHAEL HAIM SHARON | SENIOR VICE PRESIDENT

(818) 697-9385 · msharon@illicre.com · DRE#01495419

5990 Sepulveda Blvd., Ste. 600 - Sherman Oaks, CA 91411 - 818.501.2212/Phone - 818.501.2202/Fax - [www.illicre.com](http://www.illicre.com) - DRE #01834124

This information has been secured from sources we believe to be reliable, but we make no representations or warranties, expressed or implied, as to the accuracy of the information. References to square footage are approximate. References to neighboring retailers are subject to change, and may not be adjacent to the vacancy being marketed either prior to, during, or after leases are signed. Lessee must verify the information and bears all risk for any inaccuracies.

FOLLOW US



FOR LEASE

# ENCINO COMMONS

## RETAIL, MEDICAL, AND OFFICE FOR LEASE - PLAZA DE ORO

17151-253 Ventura Boulevard, Encino, CA 91316

17205-A: ±1,284 | \$3.95 + 0.76 PSF NNN | FORMER KNITTING STORE



MICHAEL HAIM SHARON | SENIOR VICE PRESIDENT

(818) 697-9385 · msharon@illicre.com · DRE#01495419

5990 Sepulveda Blvd., Ste. 600 - Sherman Oaks, CA 91411 · 818.501.2212/Phone · 818.501.2202/Fax · [www.illicre.com](http://www.illicre.com) · DRE #01834124

This information has been secured from sources we believe to be reliable, but we make no representations or warranties, expressed or implied, as to the accuracy of the information. References to square footage are approximate. References to neighboring retailers are subject to change, and may not be adjacent to the vacancy being marketed either prior to, during, or after leases are signed. Lessee must verify the information and bears all risk for any inaccuracies.

FOLLOW US



FOR LEASE

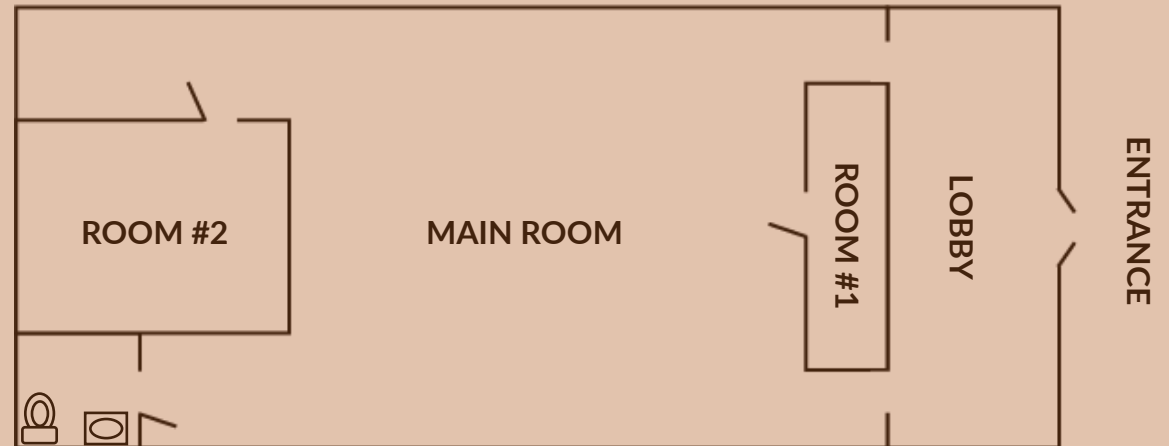
# ENCINO COMMONS

## RETAIL, MEDICAL, AND OFFICE FOR LEASE - PLAZA DE ORO

17151-253 Ventura Boulevard, Encino, CA 91316

17203-1: ±1,155 SF | \$2.75 PSF + .76 PSF MG

FORMER HEALTH CLINIC. GREAT FOR RETAIL, OFFICE, AND MEDICAL



MICHAEL HAIM SHARON | SENIOR VICE PRESIDENT

(818) 697-9385 · msharon@illicre.com · DRE#01495419

5990 Sepulveda Blvd., Ste. 600 - Sherman Oaks, CA 91411 · 818.501.2212/Phone · 818.501.2202/Fax · [www.illicre.com](http://www.illicre.com) · DRE #01834124

This information has been secured from sources we believe to be reliable, but we make no representations or warranties, expressed or implied, as to the accuracy of the information. References to square footage are approximate. References to neighboring retailers are subject to change, and may not be adjacent to the vacancy being marketed either prior to, during, or after leases are signed. Lessee must verify the information and bears all risk for any inaccuracies.

FOLLOW US





FOR LEASE

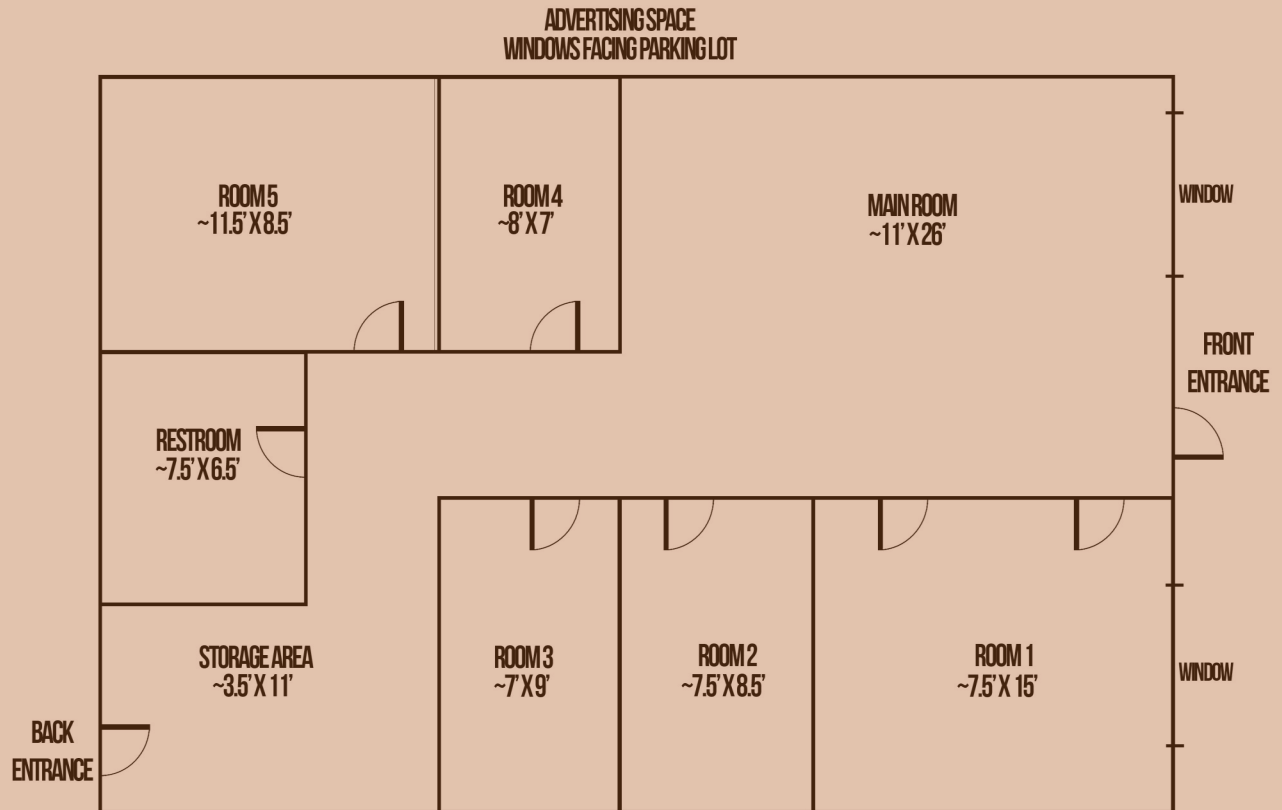
# ENCINO COMMONS

## RETAIL, MEDICAL, AND OFFICE FOR LEASE - PLAZA DE ORO

17151-253 Ventura Boulevard, Encino, CA 91316

17203-5: ±1,040 SF | \$3.30 PSF + .76 PSF MG

FORMER INSURANCE OFFICE + SPECIAL NEEDS LEARNING. GREAT FOR RETAIL, OFFICE, AND MEDICAL



MICHAEL HAIM SHARON | SENIOR VICE PRESIDENT

(818) 697-9385 · msharon@illicre.com · DRE#01495419

5990 Sepulveda Blvd., Ste. 600 - Sherman Oaks, CA 91411 - 818.501.2212/Phone - 818.501.2202/Fax - [www.illicre.com](http://www.illicre.com) - DRE #01834124

This information has been secured from sources we believe to be reliable, but we make no representations or warranties, expressed or implied, as to the accuracy of the information. References to square footage are approximate. References to neighboring retailers are subject to change, and may not be adjacent to the vacancy being marketed either prior to, during, or after leases are signed. Lessee must verify the information and bears all risk for any inaccuracies.

FOLLOW US



FOR LEASE

# ENCINO COMMONS

## RETAIL, MEDICAL, AND OFFICE FOR LEASE - PLAZA DE ORO

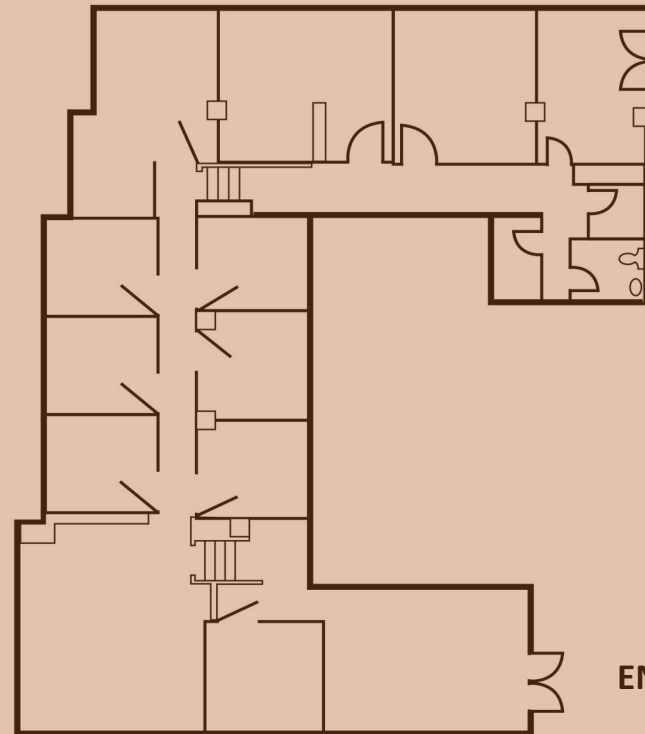
17151-253 Ventura Boulevard, Encino, CA 91316

17207-2: ±3,098 SF | \$2.95 PSF + .76 PSF NNN

FORMER REAL ESTATE OFFICE. GREAT FOR OFFICE + MEDICAL



VENTURA BLVD



ENTRANCE



MICHAEL HAIM SHARON | SENIOR VICE PRESIDENT

(818) 697-9385 · msharon@illicre.com · DRE#01495419

5990 Sepulveda Blvd., Ste. 600 - Sherman Oaks, CA 91411 - 818.501.2212/Phone - 818.501.2202/Fax - [www.illicre.com](http://www.illicre.com) - DRE #01834124

This information has been secured from sources we believe to be reliable, but we make no representations or warranties, expressed or implied, as to the accuracy of the information. References to square footage are approximate. References to neighboring retailers are subject to change, and may not be adjacent to the vacancy being marketed either prior to, during, or after leases are signed. Lessee must verify the information and bears all risk for any inaccuracies.

FOLLOW US

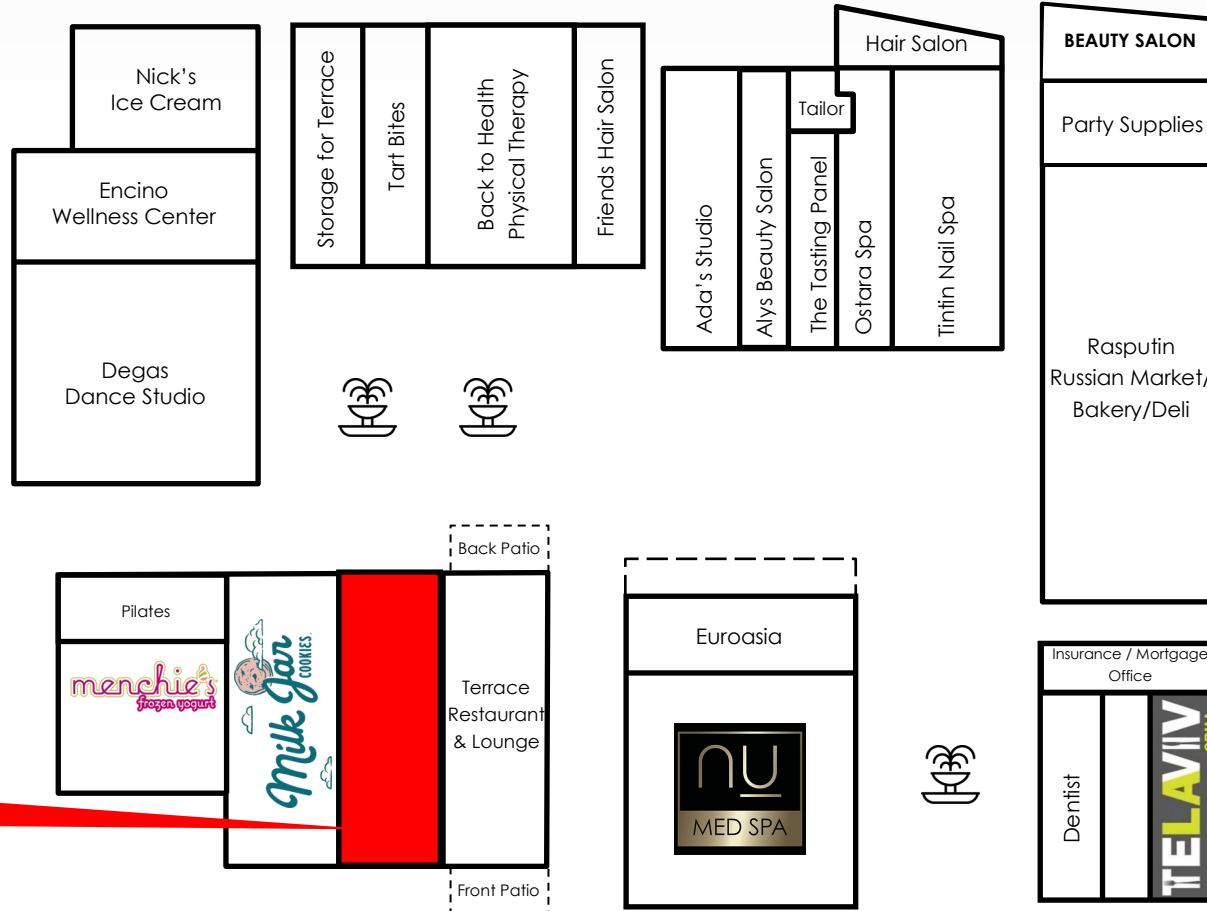


FOR LEASE

# ENCINO COMMONS

## RETAIL, MEDICAL, AND OFFICE FOR LEASE - PLAZA DE ORO

17151-253 Ventura Boulevard, Encino, CA 91316



**AVAILABLE 17237B  
±2,283 SF**



VENTURA BOULEVARD

FIRST LEVEL



COMMERCIAL REAL ESTATE

MICHAEL HAIM SHARON | SENIOR VICE PRESIDENT

(818) 697-9385 · msharon@illicre.com · DRE#01495419

5990 Sepulveda Blvd., Ste. 600 - Sherman Oaks, CA 91411 - 818.501.2212/Phone - 818.501.2202/Fax - [www.illicre.com](http://www.illicre.com) - DRE #01834124

This information has been secured from sources we believe to be reliable, but we make no representations or warranties, expressed or implied, as to the accuracy of the information. References to square footage are approximate. References to neighboring retailers are subject to change, and may not be adjacent to the vacancy being marketed either prior to, during, or after leases are signed. Lessee must verify the information and bears all risk for any inaccuracies.

FOLLOW US





FOR LEASE

# ENCINO COMMONS

## RETAIL, MEDICAL, AND OFFICE FOR LEASE - PLAZA DE ORO

17151-253 Ventura Boulevard, Encino, CA 91316



SECOND LEVEL

VENTURA BOULEVARD



**MICHAEL HAIM SHARON** | SENIOR VICE PRESIDENT

(818) 697-9385 · msharon@illicre.com · DRE#01495419

5990 Sepulveda Blvd., Ste. 600 - Sherman Oaks, CA 91411 - 818.501.2212/Phone - 818.501.2202/Fax - [www.illicre.com](http://www.illicre.com) - DRE #01834124

This information has been secured from sources we believe to be reliable, but we make no representations or warranties, expressed or implied, as to the accuracy of the information. References to square footage are approximate. References to neighboring retailers are subject to change, and may not be adjacent to the vacancy being marketed either prior to, during, or after leases are signed. Lessee must verify the information and bears all risk for any inaccuracies.

FOLLOW US





FOR LEASE

# ENCINO COMMONS

## RETAIL, MEDICAL, AND OFFICE FOR LEASE - PLAZA DE ORO

17151-253 Ventura Boulevard, Encino, CA 91316

**AVAILABLE**

US 101

BALBOA BLVD

LOUISE AVE

VENTURA BLVD

Logos shown on map: corepower YOGA, Sprint SUBWAY, Milk Jar COOKIES, menchie's frozen yogurt, Dunkin' DONUTS, Smart & Final, T-Mobile, SURELY GOAT, CHASE, BIG 5 SPORTING GOODS, THE GATE MEDITERRANEAN RESTAURANT, LAKESIDE RESTAURANT & LOUNGE, Mercedes-Benz ENCINO, citibank, Starbucks, CVS pharmacy, Jamba Juice, chop stop, WELLS FARGO, chili's, PANDA EXPRESS, PET SMART, Michaels, Yogurtland, Domino's PIZZA, EQUINOX, Office DEPOT, Bank of America, Vitamin Shoppe, Panera BREAD, SUPERCUTS.

DEMOS	1 mile	3 mile	5 mile
Population	16,164	141,621	434,995
Avg. HH Income	\$122,691	\$107,361	\$96,358
Daytime Pop.	13,781	78,768	193,332
Traffic Count	±35,086 CPD		



MICHAEL HAIM SHARON | SENIOR VICE PRESIDENT

(818) 697-9385 · msharon@illicre.com · DRE#01495419

5990 Sepulveda Blvd., Ste. 600 - Sherman Oaks, CA 91411 - 818.501.2212/Phone - 818.501.2202/Fax - [www.illicre.com](http://www.illicre.com) - DRE #01834124

This information has been secured from sources we believe to be reliable, but we make no representations or warranties, expressed or implied, as to the accuracy of the information. References to square footage are approximate. References to neighboring retailers are subject to change, and may not be adjacent to the vacancy being marketed either prior to, during, or after leases are signed. Lessee must verify the information and bears all risk for any inaccuracies.

FOLLOW US

