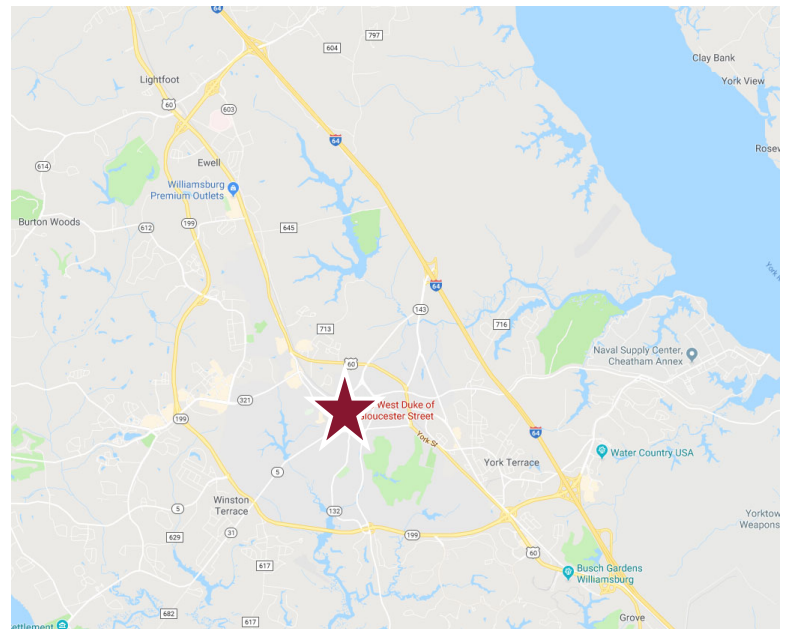




**Property Features**

- Building Size: 3,539 SF
- Available Space
  - Suite 205: 423 RSF (\$740/month)
  - Suite 217: 245 RSF (\$430/month)
  - Suite 233/234: 400 RSF (\$700/month)
  - Suite 235: 1,700 RSF (\$2900/month) (can be subdivided)
- Utilities included
- Enjoy doing business in historical Colonial Williamsburg's Merchants Square
- Located in the heart of Williamsburg with restaurants, banks and the College of William & Mary



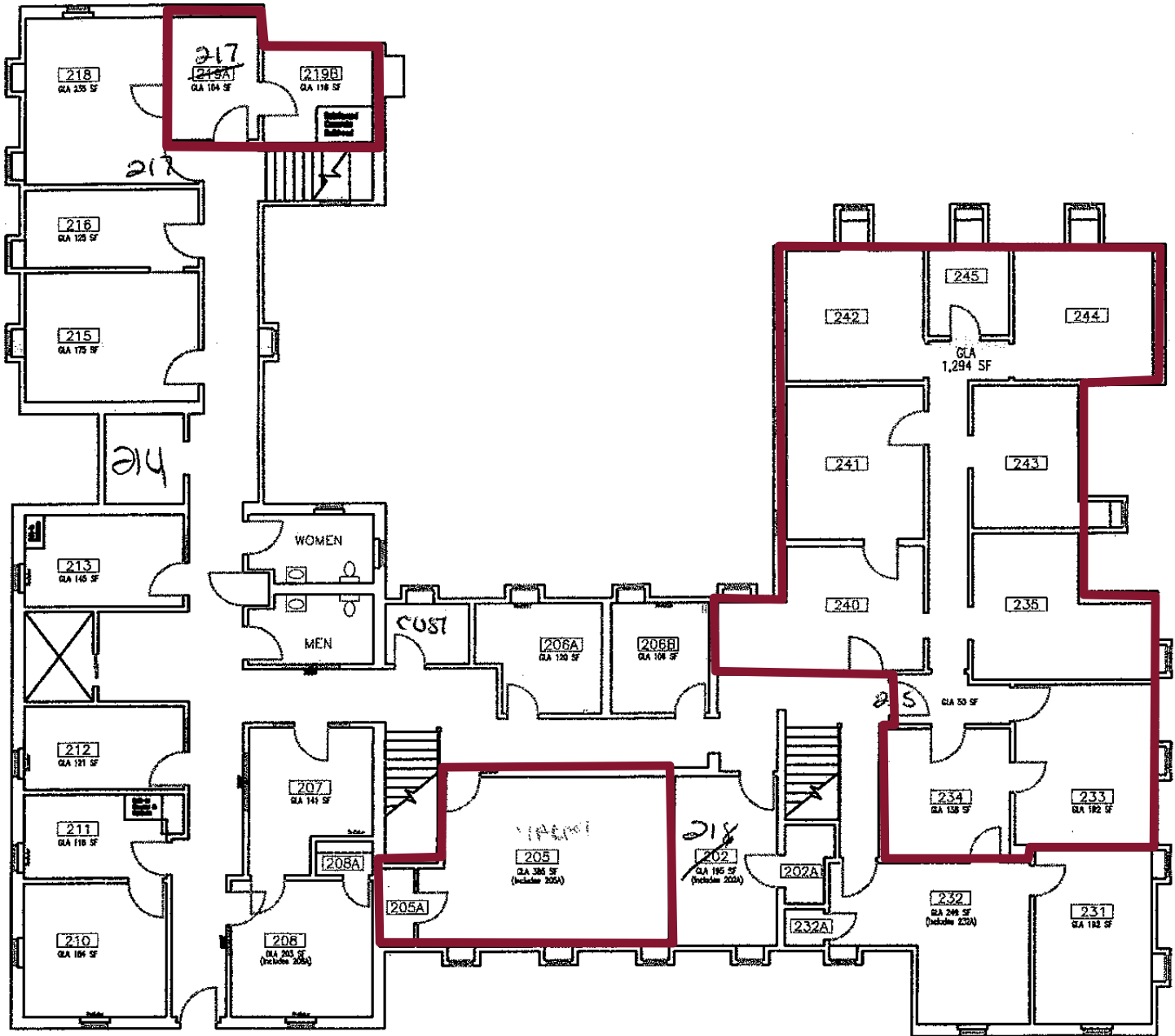
For more information, contact:

**DAWN GRIGGS, SIOR**  
 First Vice President  
 757 873 1210  
[dawn.griggs@thalhimer.com](mailto:dawn.griggs@thalhimer.com)

**DREW HAYNIE**  
 First Vice President  
 757 873 9004  
[drew.haynie@thalhimer.com](mailto:drew.haynie@thalhimer.com)

One BayPort Way, Suite 100  
 Newport News, VA 23606  
[www.thalhimer.com](http://www.thalhimer.com)

**SECOND FLOOR**



For more information, contact:

**DAWN GRIGGS, SIOR**  
 First Vice President  
 757 873 1210  
 dawn.griggs@thalhimer.com

**DREW HAYNIE**  
 First Vice President  
 757 873 9004  
 drew.haynie@thalhimer.com

One BayPort Way, Suite 100  
 Newport News, VA 23606  
 www.thalhimer.com