



Voit
Real Estate Services

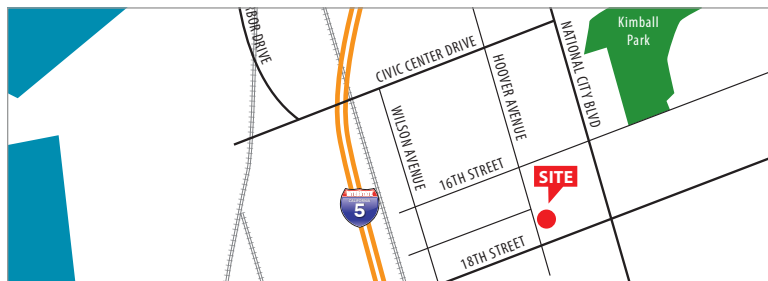
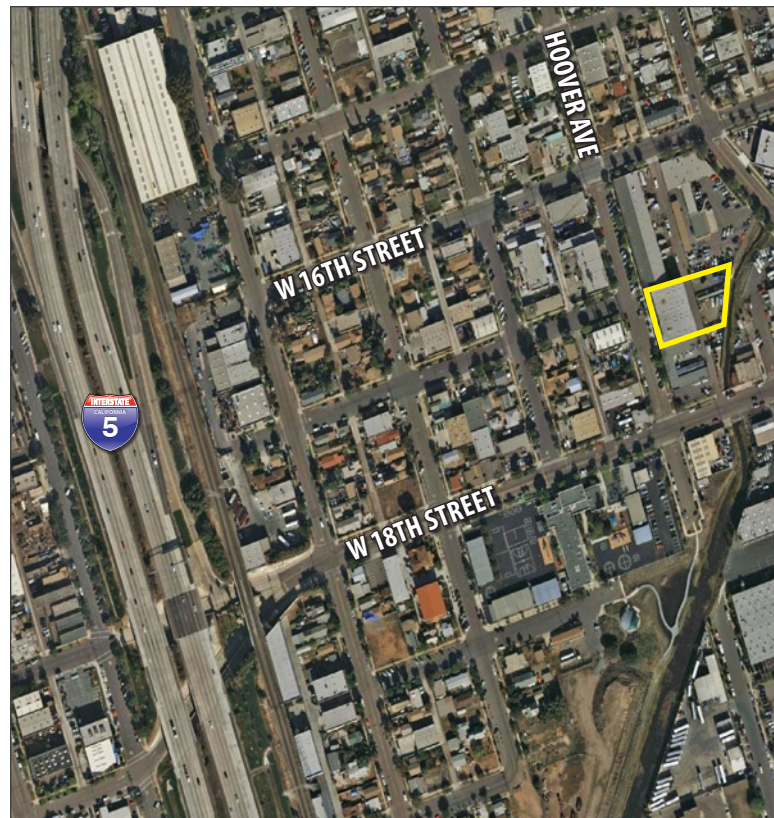
FOR LEASE



1703-1705 HOOVER AVENUE, NATIONAL CITY, CA 91950

PROPERTY FEATURES

- 22,000 SF industrial warehouse
- Five (5) grade level doors
- One (1) dock high door
- 1,200 AMP 3 phase power
- ± 20,000 SF storage/secure yard with power and water
- Office 10%-20%
- Skylights
- Close to I-5, Hwy-54, I-805, and Hwy-94 freeways
- Gas
- Close to trolley



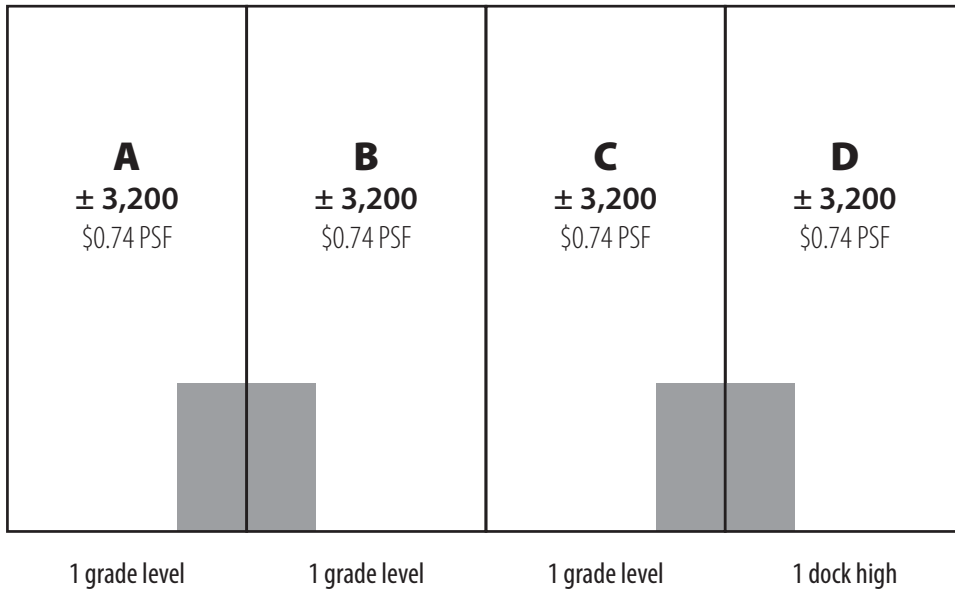
NICK PRICE
Associate
Lic. #01773111
(858) 458-3334
nprice@voitco.com

Lic.# 01333376
4370 La Jolla Village Drive, Suite 990
San Diego, CA 92122
(858) 453-0505 TEL
(858) 453-1981 FAX



1703-1705 HOOVER AVENUE, NATIONAL CITY, CA 91950

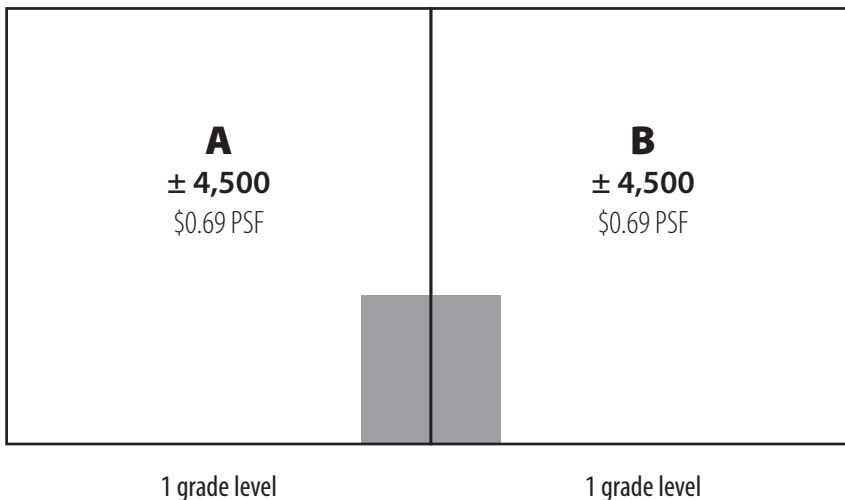
1705 HOOVER AVENUE



1705 HOOVER ($\pm 13,000$ SF)

- Three (3) grade level doors
- One (1) dock high
- ± 18 foot clear height
- Office 20x20 two floor office
- Skylights
- Gas
- 800 AMP 3 phase power

1703 HOOVER AVENUE



1703 HOOVER ($\pm 9,000$ SF)

- Two (2) grade level doors
- ± 14.5 foot clear height
- Gas
- Automatic air charge
- 400 AMP 3 phase power