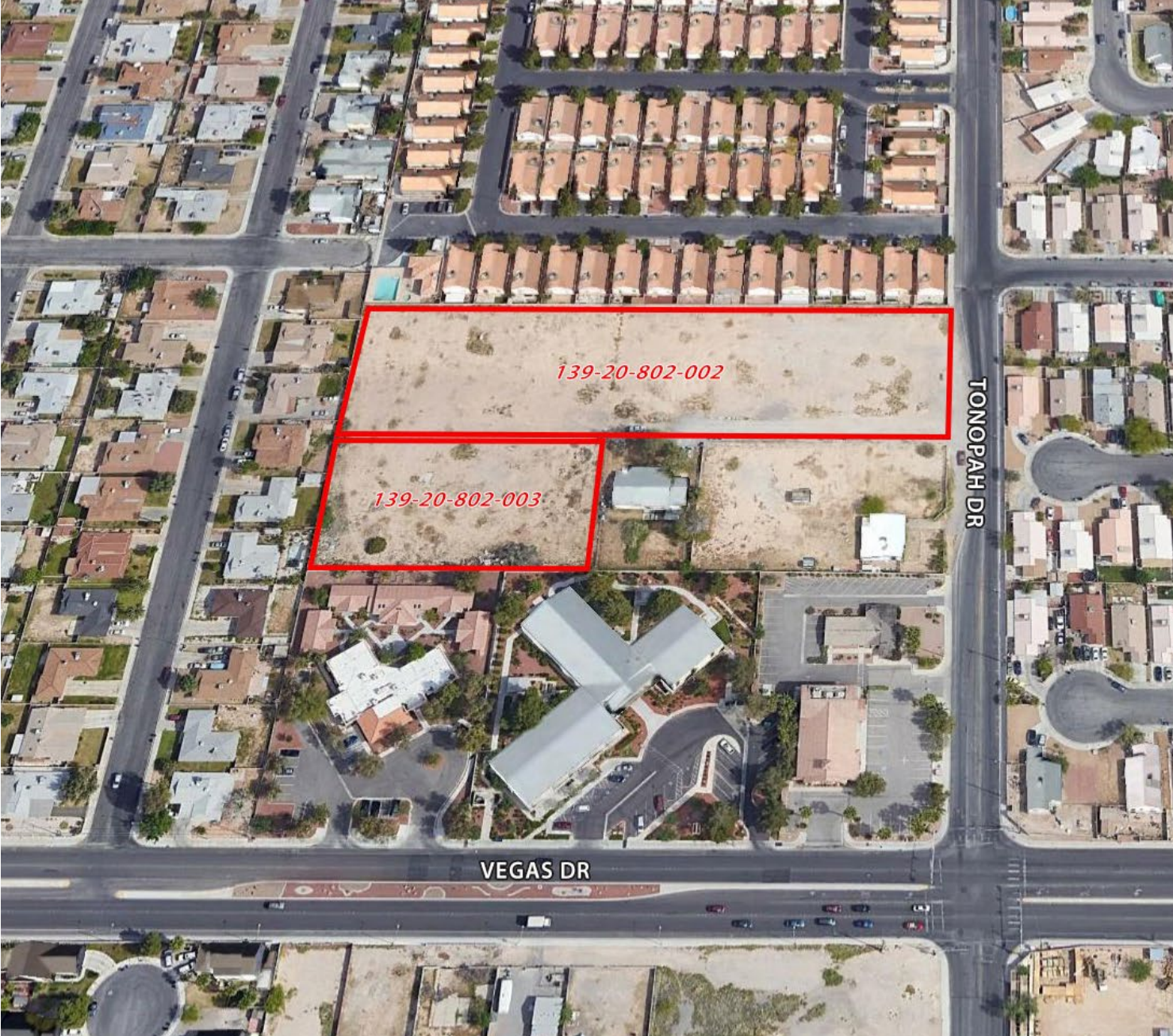


FOR SALE

3.43 ACRES



PROPERTY HIGHLIGHTS

- 3.43 total acres
- Located between Rancho Drive and Martin Luther King Drive, 1 mile north of U.S. 95
- Access to I-15 via Lake Mead Blvd
- Access to U.S. 95 via Martin Luther King Blvd
- Zoning: (U(ML)) (5.6-8 units per acre)
- APN: 139-20-802-002 & 139-20-802-003

ASKING PRICE: \$857,500

**AVISON
YOUNG**

10845 Griffith Peak Drive, Suite 100
Las Vegas, NV 89135
O 702.472.7979 F 702.475.7545



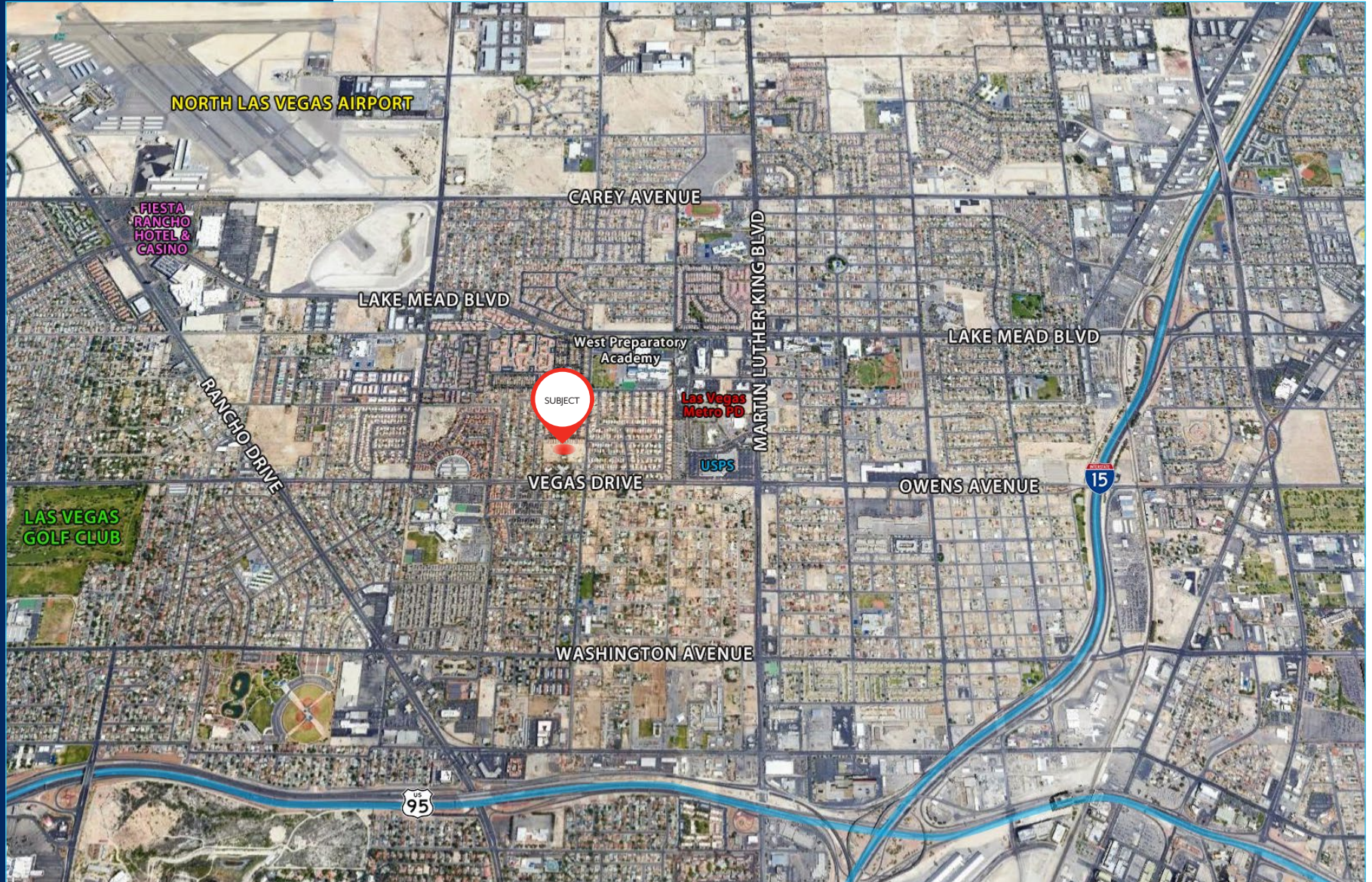
JOE LEAVITT
Principal
C 702.303.7893
joe.leavitt@avisonyoung.com
NV RE Lic#: S.0062543.LLC

CHRIS LEXIS
Principal
C 702.376.8500
chris.lexis@avisonyoung.com
NV RE Lic#: S.0062998.LLC

For more information, please contact:

N. Tonopah Drive
Las Vegas, NV 89106

N. Tonopah Drive
Las Vegas, NV 89106



**AVISON
YOUNG**

10845 Griffith Peak Drive, Suite 100
Las Vegas, NV 89135
O 702.472.7979 F 702.475.7545



Platinum
member

JOE LEAVITT
Principal

C 702.303.7893

joe.leavitt@avisonyoung.com

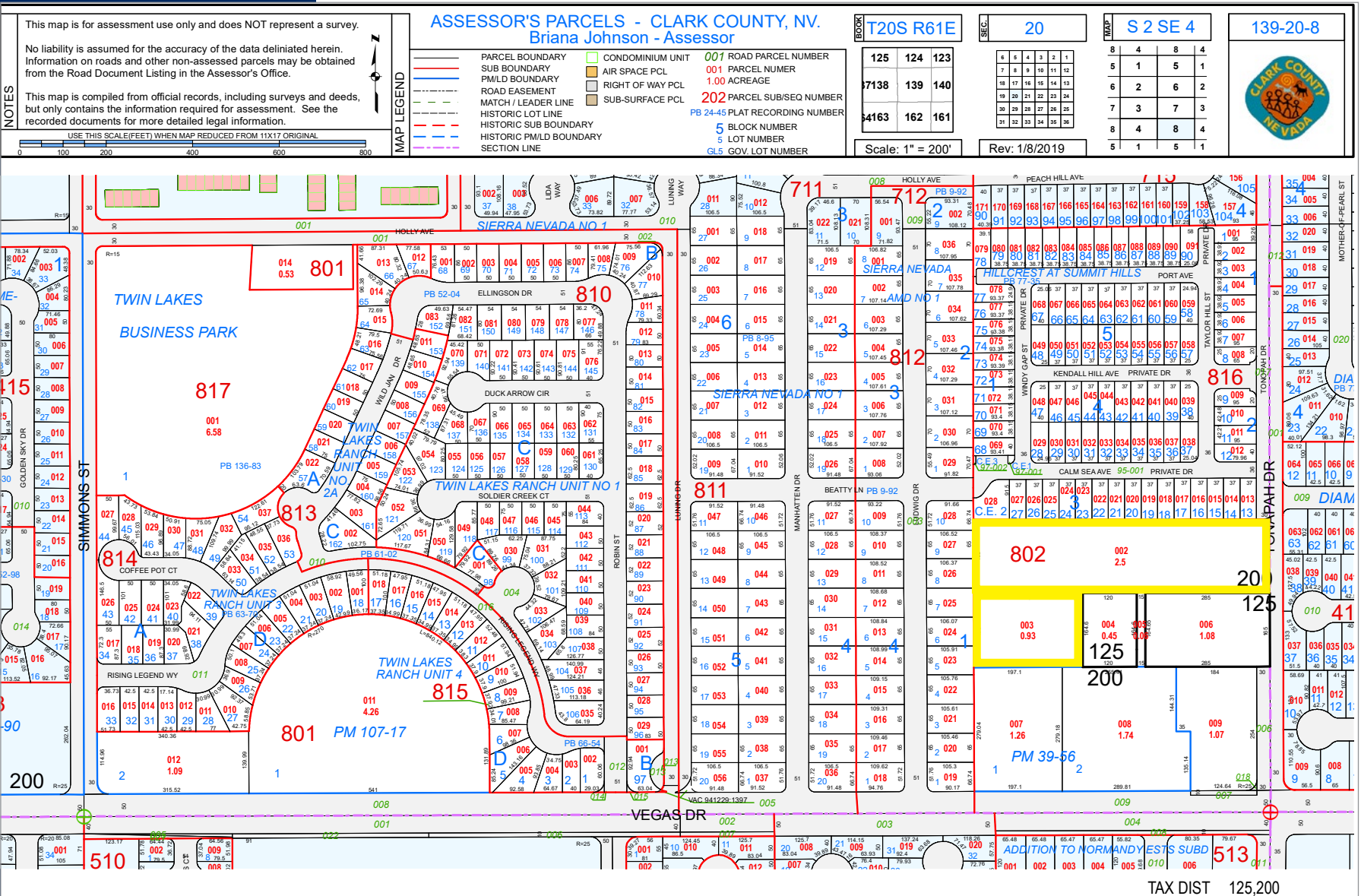
CHRIS LEXIS
Principal

C 702.376.8500

chris.lexis@avisonyoung.com

For more information, please contact:

N. Tonopah Drive
Las Vegas, NV 89106



10845 Griffith Peak Drive, Suite 100
Las Vegas, NV 89135
O 702.472.7979 F 702.475.7545



Platinum member

JOE LEAVITT
Principal
C 702.303.7893
joe.leavitt@avisonyoung.com

CHRIS LEXIS
Principal
C 702.376.8500
chris.lexis@avisonyoung.com

For more information, please contact:

TAX DIST 125,200