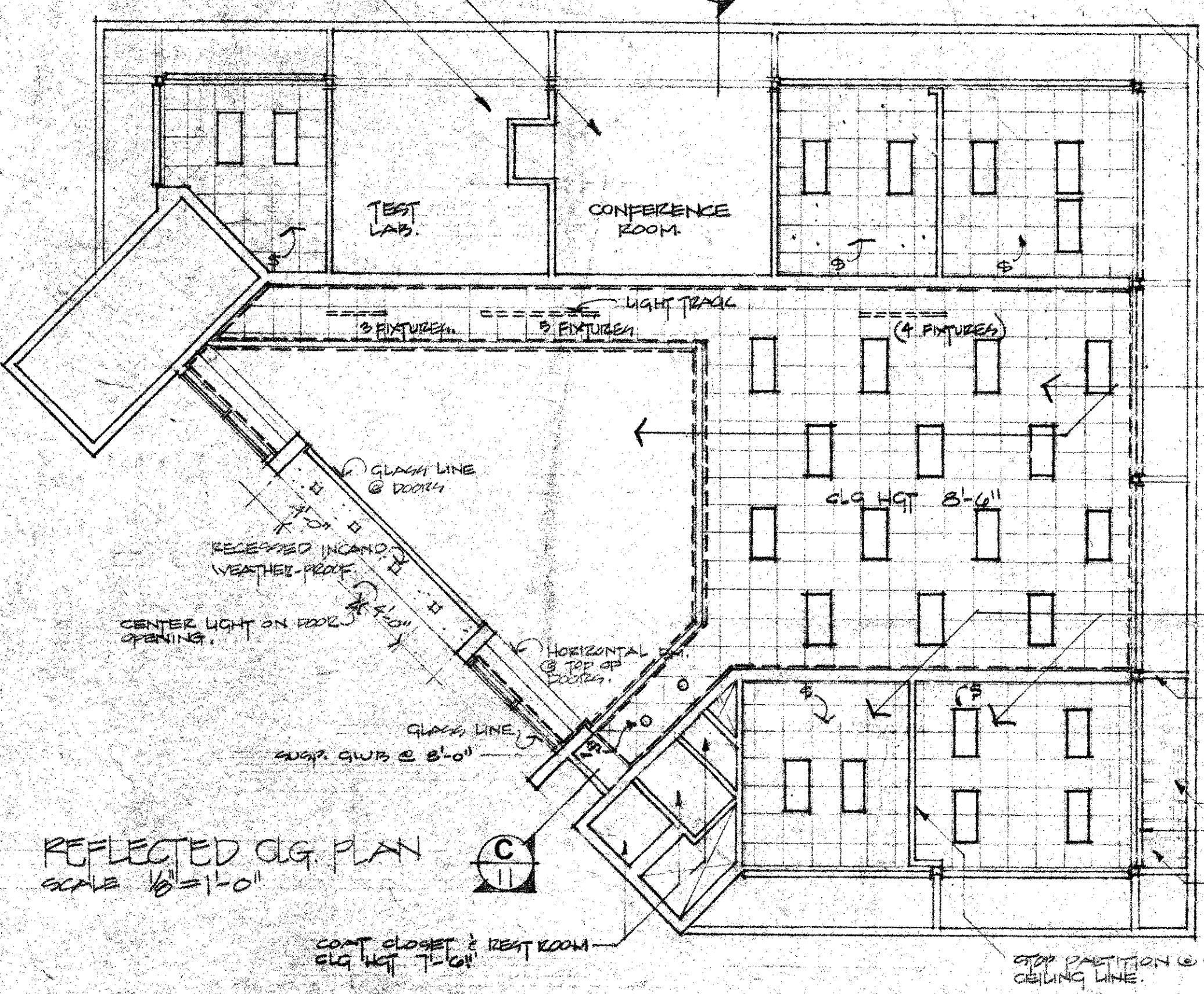
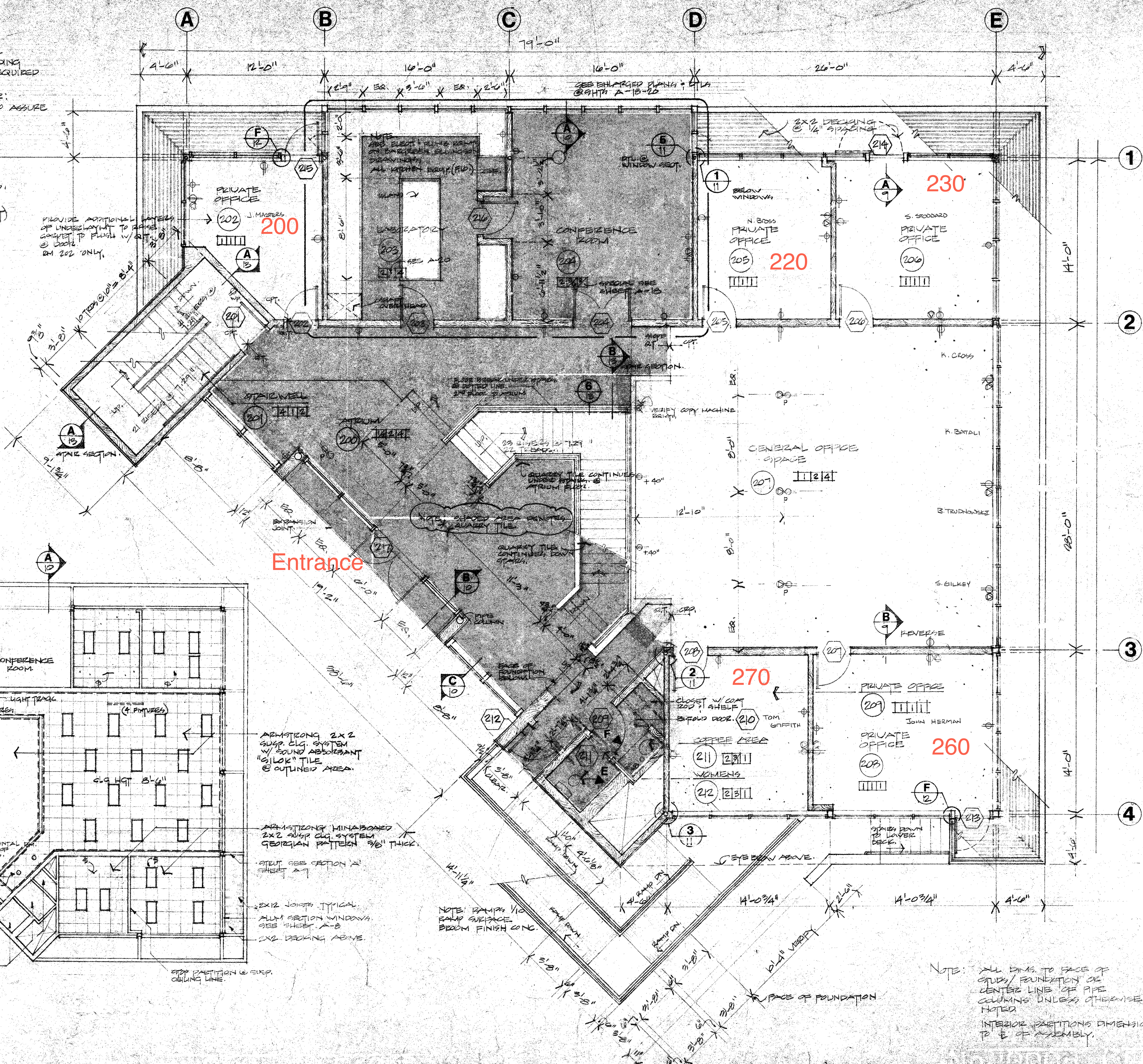


NOTE: ROOM # 203  
 THE OWNER SHALL FURNISH & INSTALL ALL MILLWORK AND KITCHEN EQUIPMENT (INCLUDING SINKS) REQUIRED BY THIS SET AND AS REQUIRED ON BARGREEN ELLINGSON INC. DRAWINGS.  
 THE CONTRACTOR SHALL BE RESPONSIBLE FOR:  
 1. COORDINATE W/ BARGREENS INSTALLATION TO ASSURE PROPER SEQUENCING OF WORK.  
 2. QUARRY TILE FLOORING.  
 3. SUSPENDED CLG. LIGHTING.  
 4. PLUMBING ROUGH-IN TO LOCATIONS SHOWN ON BARGREEN ELLINGSON DRAWINGS.  
 5. FINISHED ELECTRICAL OUTLETS, "J" BOXES AS READ BY BARGREEN ELLINGSON.  
 6. FINISH PAINTING @ EXPOSED WALL SURFACES.  
 7. ALL PERMITS FOR BLUE HVAC PER NOTING DOCUMENTS.  
 8. ACCESS AND DUCT WORK (W/ ROOF EXHAUST) FOR HROD EXHAUST.  
 9. REFERENCE SH. A-20

2 FLOOR PLAN  
 SCALE 1/4" = 1'-0"  
 NORTH



ARMSTRONG 2x2 SUSP. CLG. SYSTEM W/ SOUND ABSORBANT "SILOK" TILE @ OUTLINED AREA.  
 ARMSTRONG MINIBOARD 2x2 SUSP. CLG. SYSTEM GEORGIAN PATTERN 3/8" THICK.  
 STUCCO SEE SECTION A-7  
 2x12 JOISTS TYPICAL. ALL SECTION WINDOWS SEE SHEET A-8  
 2x2 DECKING ABOVE

NOTE: ALL DIMS. TO FACE OF STUDY/ FOUNDATION OR CENTER LINE OF PIPE COLUMNS UNLESS OTHERWISE NOTED.  
 INTERIOR PARTITIONS DIMENSIONED TO E. OF ASSEMBLY.

RESTAURANTS UNLIMITED  
 CORPORATE HEADQUARTERS  
 SEATTLE, WASHINGTON  
 FLOOR PLAN SECOND FLOOR

Project  
 REGISTERED ARCHITECT  
 STANLEY E. HANSEN  
 3200 WESTERN AVENUE, SEATTLE, WA 98104

Drawn by  
 Checked by  
 Date  
 Scale

Distribution

LOUIS OWEN INC.  
 340 G Street, Suite 202, Anchorage (907) 276 4921  
 622 Western Avenue, Seattle (206) 622 3265

Sheet No. A-5