



90 TownPark

90 Colonial Center Parkway, Lake Mary, FL

Owned by:



NOW OPEN



New Construction - Office Available

2,784± rentable square feet

FOR LEASE



Location



Floor Plan



Contact



Next

Jordan Bohannon

Associate

407.219.3502

[jordan.bohannon@avisonyoung.com](mailto:jordan.bohannon@avisonyoung.com)



# 90 TownPark

90 Colonial Center Parkway, Lake Mary, FL

Owned by:



## Prime Location

- Monument and/or Building Signage Available (Visible from Interstate-4)
- Elevated with Interstate-4 visibility (140,000 cars/day)
- Daily Traffic Counts 10,000+ on Colonial Center Parkway and 33,000+ on CR-46A
- Exceptional Interstate-4 and SR-417 access
- Walkable to 200,000+ SF Colonial TownPark Retail and 1MM+ SF Colonial TownPark Office
- Dual-feed power supply

## DEMOGRAPHICS

	1-Mile Radius	3-Mile Radius	5-Mile Radius
2018 Population	5,454	58,972	115,965
2023 Population	6,108	65,322	125,449
2018 Households	2,593	23,463	44,060
2018 Average HH Income	\$105,265	\$103,841	\$94,769
2018 Median HH Income	\$81,032	\$72,918	\$63,222



Home



Location



Floor Plan



Contact



Previous



Next

Jordan Bohannon

Associate

407.219.3502

[jordan.bohannon@avisonyoung.com](mailto:jordan.bohannon@avisonyoung.com)



# 90 TownPark

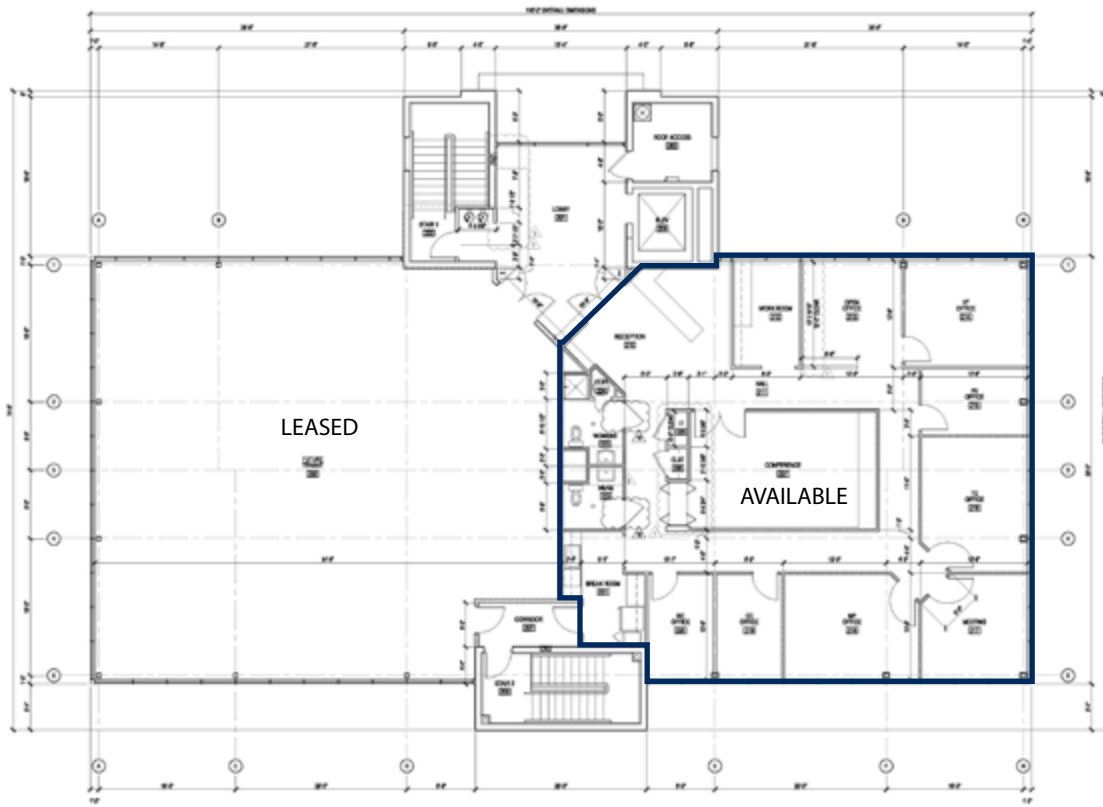
90 Colonial Center Parkway, Lake Mary, FL

Owned by:



## Suite 200 Move-In Ready

2,784± sf Office



Home



Location



Floor Plan



Contact



Previous



Next

Jordan Bohannon

Associate

407.219.3502

[jordan.bohannon@avisonyoung.com](mailto:jordan.bohannon@avisonyoung.com)