

PRIME CORNER LOT IN PRAIRIEVILLE

HENRY RD. AT JEFFERSON HWY., PRAIRIEVILLE, LA 70769

2.257 ACRES



OFFERING SUMMARY

Sale Price:	\$958,000
Lot Size:	2.257 Acres
Price / Acre:	\$424,457
Zoning:	MU2/RM

PROPERTY HIGHLIGHTS

- Vacant Land Available for Sale
- Hard Corner, Mostly Cleared Lot
- Prime Location
- Near Intersection of Jefferson at Airline Hwy.
- Approximately 160 FT. of Frontage
- Excellent Visibility
- Zoned MU2/RM
- Electric, Water, Gas, & Cable Available
- **Owner/Agent**



H. N. "HANK" SAURAGE, IV, CCIM

Managing Broker & Partner

(D)225.229.2594

hank@sr-cre.com

SAURAGE ROTENBERG COMMERCIAL REAL ESTATE, LLC

5135 Bluebonnet Boulevard

Baton Rouge, LA 70809

225.766.0000 | sauragerotenberg.com

VACANT LAND FOR SALE

PRIME CORNER LOT IN PRAIRIEVILLE

HENRY RD. AT JEFFERSON HWY., PRAIRIEVILLE, LA 70769

2.257 ACRES



H. N. "HANK" SAURAGE, IV, CCIM

Managing Broker & Partner

(D)225.229.2594

hank@sr-cre.com

SAURAGE ROTENBERG COMMERCIAL REAL ESTATE, LLC

5135 Bluebonnet Boulevard

Baton Rouge, LA 70809

225.766.0000 | sauragerotenberg.com

The information contained herein has either been given to us by property owners or is from sources deemed reliable and is believed to be correct, it is not in any way warranted or guaranteed by Saurage Rotenberg Commercial Real Estate. This information is submitted subject to errors, omissions, changes in price, rental or other conditions, withdrawal without notice, and to any special listing conditions imposed by the principals. Licensed in Louisiana & Mississippi.px



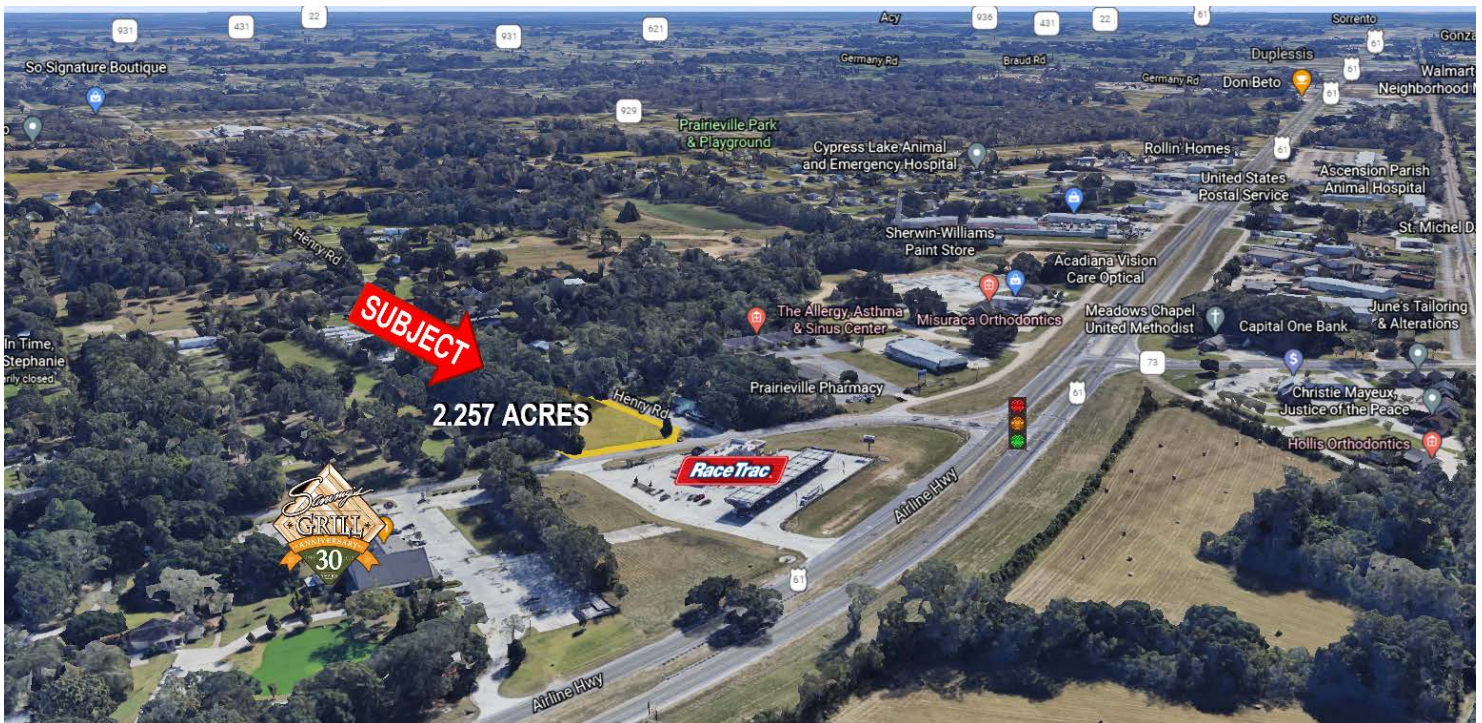
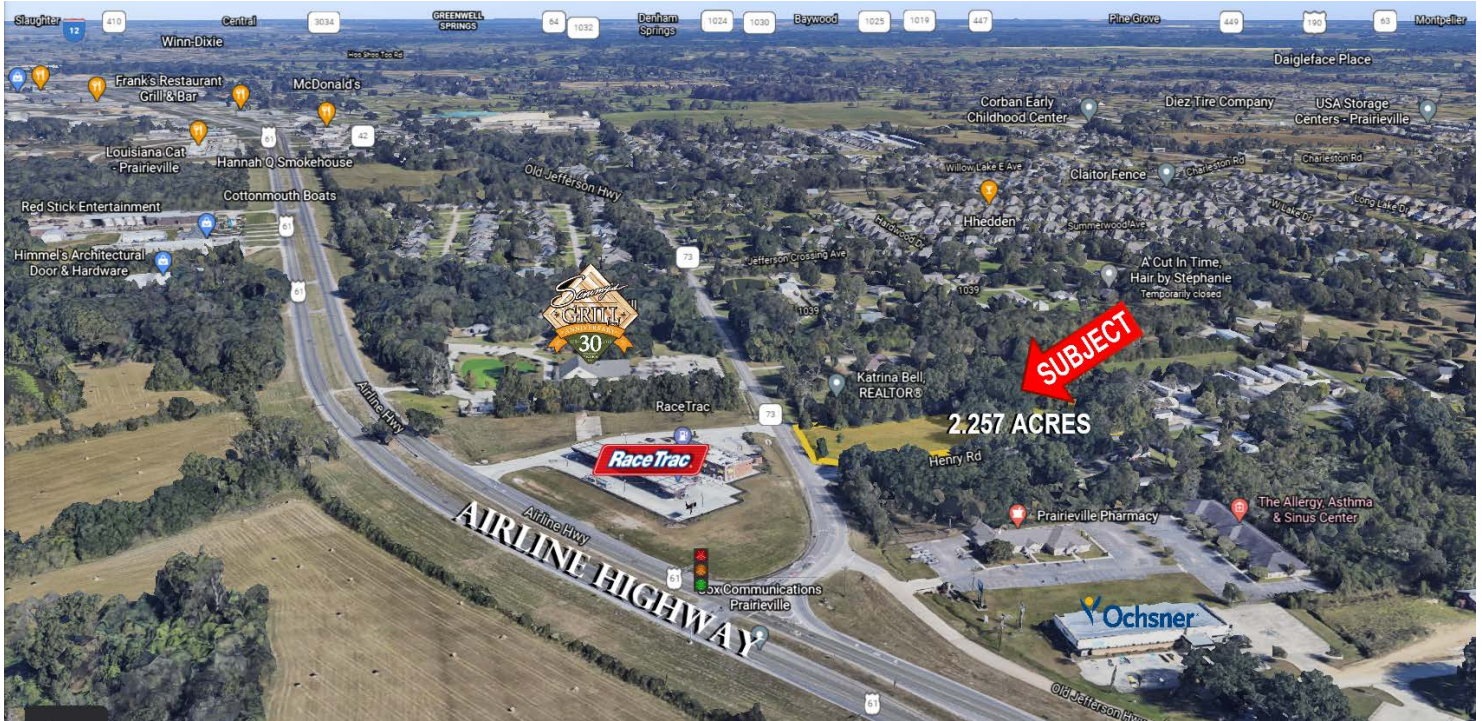
SAURAGE ROTENBERG™
COMMERCIAL REAL ESTATE

VACANT LAND FOR SALE

PRIME CORNER LOT IN PRAIRIEVILLE

HENRY RD. AT JEFFERSON HWY., PRAIRIEVILLE, LA 70769

2.257 ACRES AVAILABLE



H. N. "HANK" SAURAGE, IV, CCIM
Managing Broker & Partner
(D)225.229.2594
hank@sr-cre.com

SAURAGE ROTENBERG COMMERCIAL REAL ESTATE, LLC
5135 Bluebonnet Boulevard
Baton Rouge, LA 70809
225.766.0000 | sauragerotenberg.com

The information contained herein has either been given to us by property owners or is from sources deemed reliable and is believed to be correct, it is not in any way warranted or guaranteed by Saurage Rotenberg Commercial Real Estate. This information is submitted subject to errors, omissions, changes in price, rental or other conditions, withdrawal without notice, and to any special listing conditions imposed by the principals. Licensed in Louisiana & Mississippi.px



SAURAGE ROTENBERG™
COMMERCIAL REAL ESTATE

VACANT LAND FOR SALE

RETAIL MAP

HENRY RD. AT JEFFERSON HWY., PRAIRIEVILLE, LA 70769

2.257 ACRES



H. N. "HANK" SAURAGE, IV, CCIM
Managing Broker & Partner
(D)225.229.2594
hank@sr-cre.com

SAURAGE ROTENBERG COMMERCIAL REAL ESTATE, LLC
5135 Bluebonnet Boulevard
Baton Rouge, LA 70809
225.766.0000 | sauragerotenberg.com

The information contained herein has either been given to us by property owners or is from sources deemed reliable and is believed to be correct, it is not in any way warranted or guaranteed by Saurage Rotenberg Commercial Real Estate. This information is submitted subject to errors, omissions, changes in price, rental or other conditions, withdrawal without notice, and to any special listing conditions imposed by the principals. Licensed in Louisiana & Mississippi.px



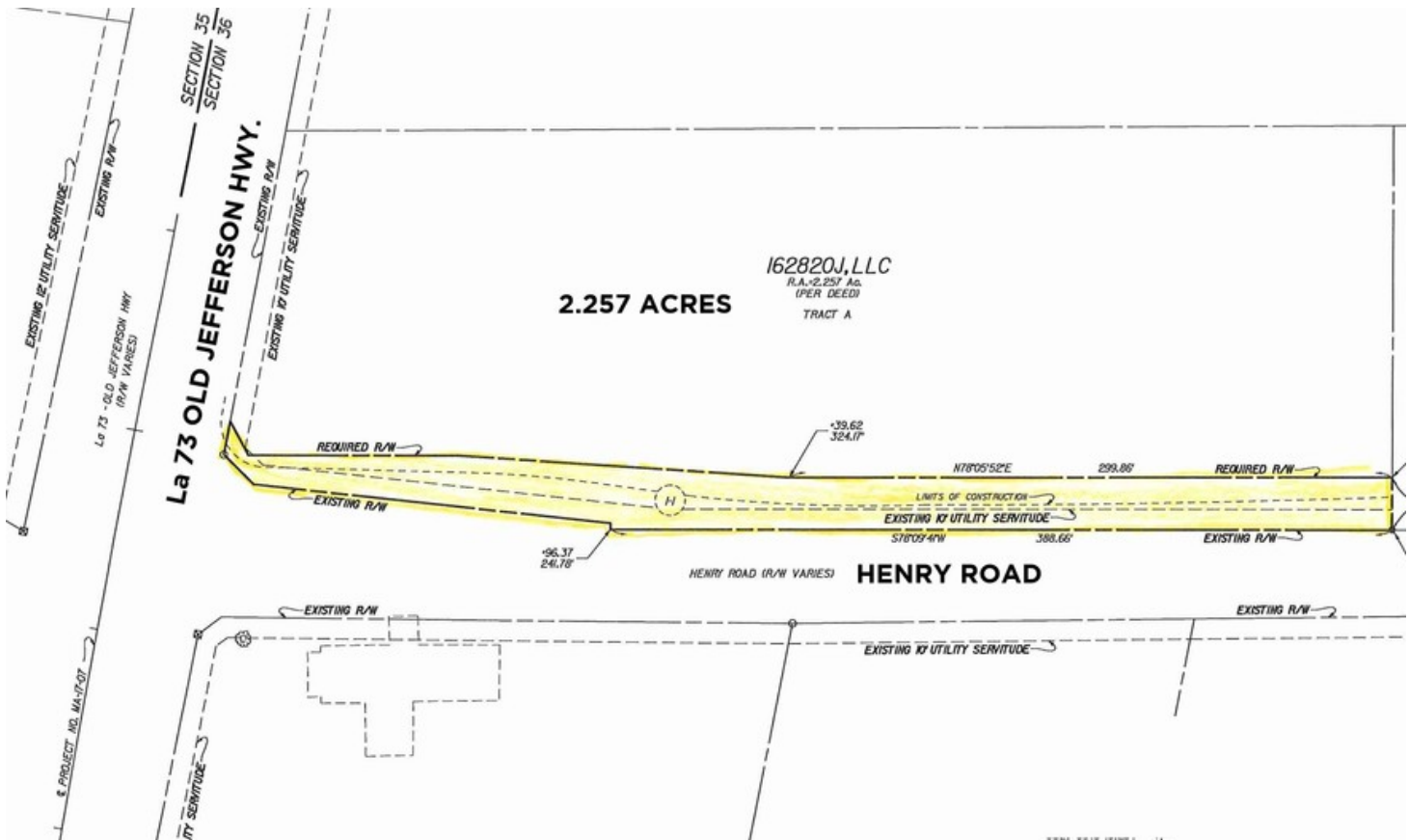
SAURAGE ROTENBERG™
COMMERCIAL REAL ESTATE

VACANT LAND FOR SALE

SURVEY

HENRY RD. AT JEFFERSON HWY., PRAIRIEVILLE, LA 70769

2.257 ACRES



H. N. "HANK" SAURAGE, IV, CCIM
Managing Broker & Partner
(D)225.229.2594
hank@sr-cre.com

SAURAGE ROTENBERG COMMERCIAL REAL ESTATE, LLC
5135 Bluebonnet Boulevard
Baton Rouge, LA 70809
225.766.0000 | sauragerotenberg.com

The information contained herein has either been given to us by property owners or is from sources deemed reliable and is believed to be correct, it is not in any way warranted or guaranteed by Saurage Rotenberg Commercial Real Estate. This information is submitted subject to errors, omissions, changes in price, rental or other conditions, withdrawal without notice, and to any special listing conditions imposed by the principals. Licensed in Louisiana & Mississippi.px



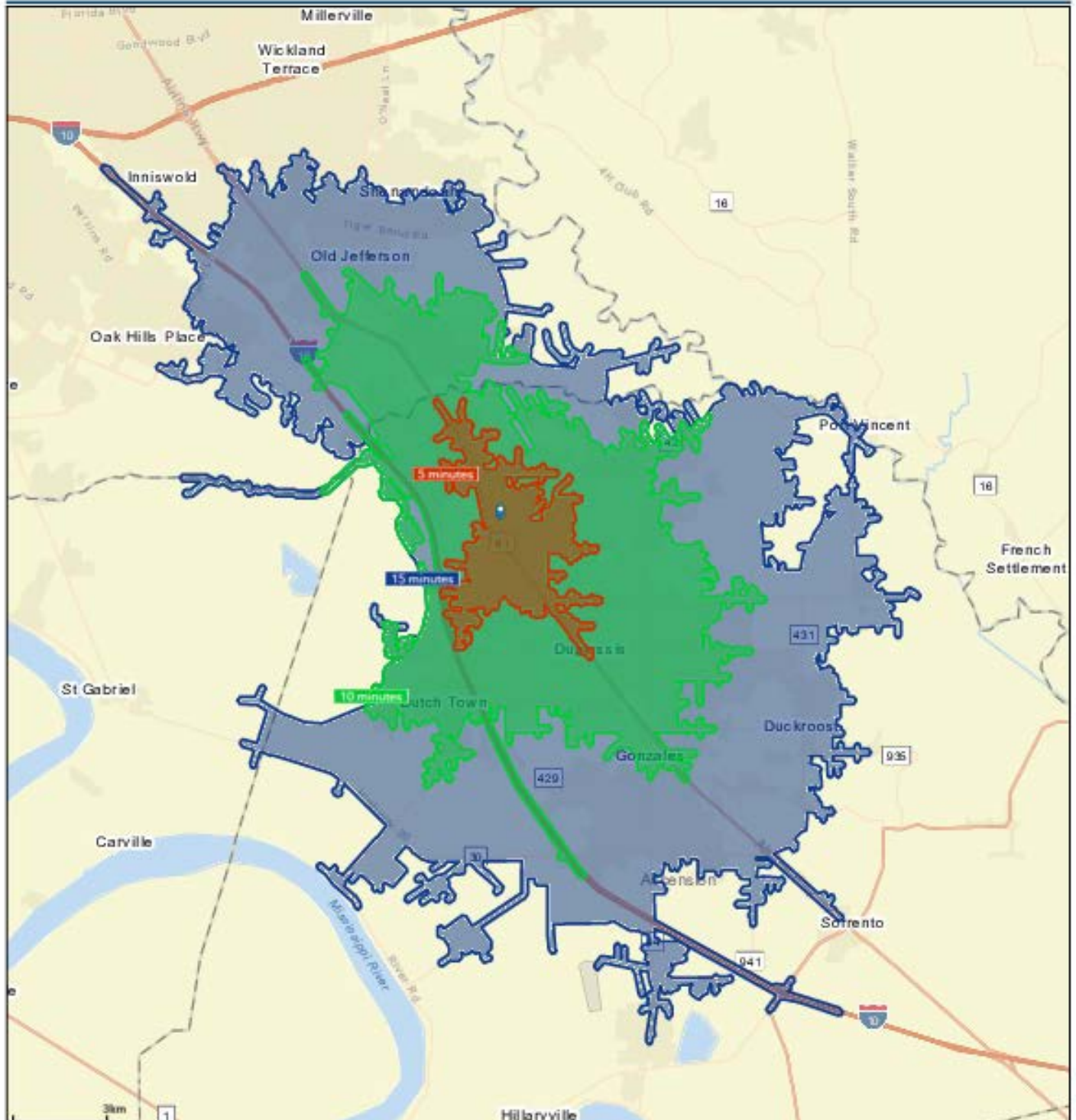
SAURAGE ROTENBERG™
COMMERCIAL REAL ESTATE

VACANT LAND FOR SALE

DRIVE TIME MAP: 5, 10, 15 MINUTES

HENRY RD. AT JEFFERSON HWY., PRAIRIEVILLE, LA 70769

2.257 ACRES



H. N. "HANK" SAURAGE, IV, CCIM
Managing Broker & Partner
(D)225.229.2594
hank@sr-cre.com

SAURAGE ROTENBERG COMMERCIAL REAL ESTATE, LLC
5135 Bluebonnet Boulevard
Baton Rouge, LA 70809
225.766.0000 | sauragerotenberg.com

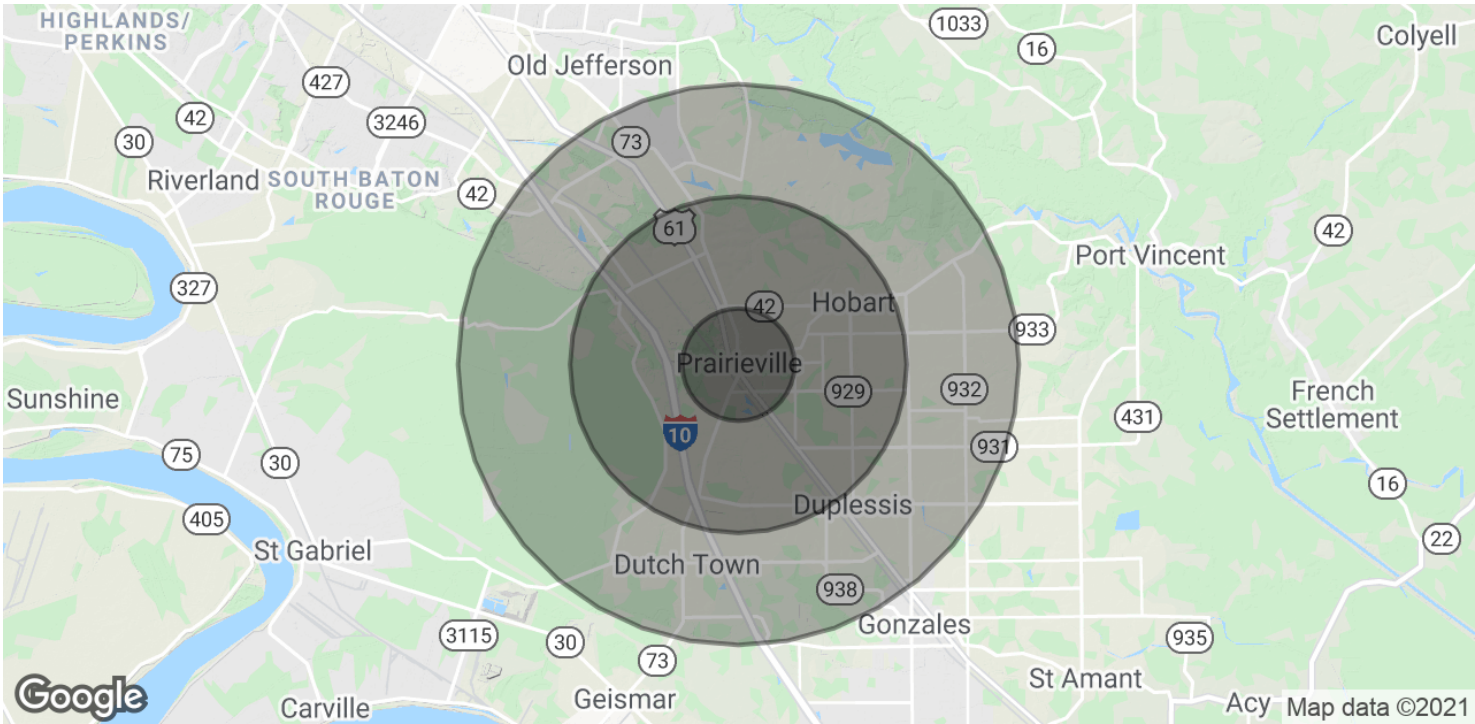
The information contained herein has either been given to us by property owners or is from sources deemed reliable and is believed to be correct, it is not in any way warranted or guaranteed by Saurage Rotenberg Commercial Real Estate. This information is submitted subject to errors, omissions, changes in price, rental or other conditions, withdrawal without notice, and to any special listing conditions imposed by the principals. Licensed in Louisiana & Mississippi.px



DEMOGRAPHICS

HENRY RD. AT JEFFERSON HWY., PRAIRIEVILLE, LA 70769

2.257 ACRES



POPULATION	1 MILE	3 MILES	5 MILES
Total Population	3,926	27,509	58,711
Average Age	32.8	33.4	34.1
Average Age (Male)	32.1	32.5	32.7
Average Age (Female)	34.1	34.5	35.3

HOUSEHOLDS & INCOME	1 MILE	3 MILES	5 MILES
Total Households	1,342	9,434	20,786
# Of Persons Per HH	2.9	2.9	2.8
Average HH Income	\$89,379	\$90,791	\$89,034
Average House Value	\$190,736	\$186,269	\$246,511

* Demographic data derived from 2010 US Census

H. N. "HANK" SAURAGE, IV, CCIM
Managing Broker & Partner
(D)225.229.2594
hank@sr-cre.com

SAURAGE ROTENBERG COMMERCIAL REAL ESTATE, LLC
5135 Bluebonnet Boulevard
Baton Rouge, LA 70809
225.766.0000 | sauragerotenberg.com

The information contained herein has either been given to us by property owners or is from sources deemed reliable and is believed to be correct, it is not in any way warranted or guaranteed by Saurage Rotenberg Commercial Real Estate. This information is submitted subject to errors, omissions, changes in price, rental or other conditions, withdrawal without notice, and to any special listing conditions imposed by the principals. Licensed in Louisiana & Mississippi.px