

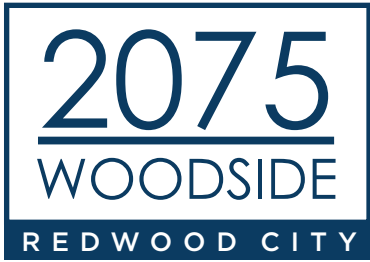
2075
WOODSIDE
REDWOOD CITY



Brad Altick
Managing Director
+1 650 320 0214
brad.altick@cushwake.com
LIC #01877935

Greg Pickett
Executive Managing Director
+1 650 320 0226
greg.pickett@cushwake.com
LIC #01846327





PROPERTY HIGHLIGHTS

Suite 140 : ±394 RSF

Suite 270 : ±2,851 RSF

Suite 290 : ±1,076 RSF

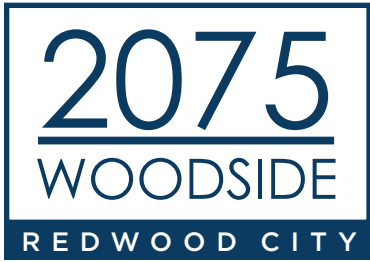
- Brand New Interior & Exterior Renovations
- Great Location with Close Access to Highway 280
- Close to Downtown Menlo Park, Downtown Redwood City and Sand Hill Road Amenities
- 4/1000 Parking Available



Brad Altick
Managing Director
+1 650 320 0214
brad.altick@cushwake.com
LIC #01877935

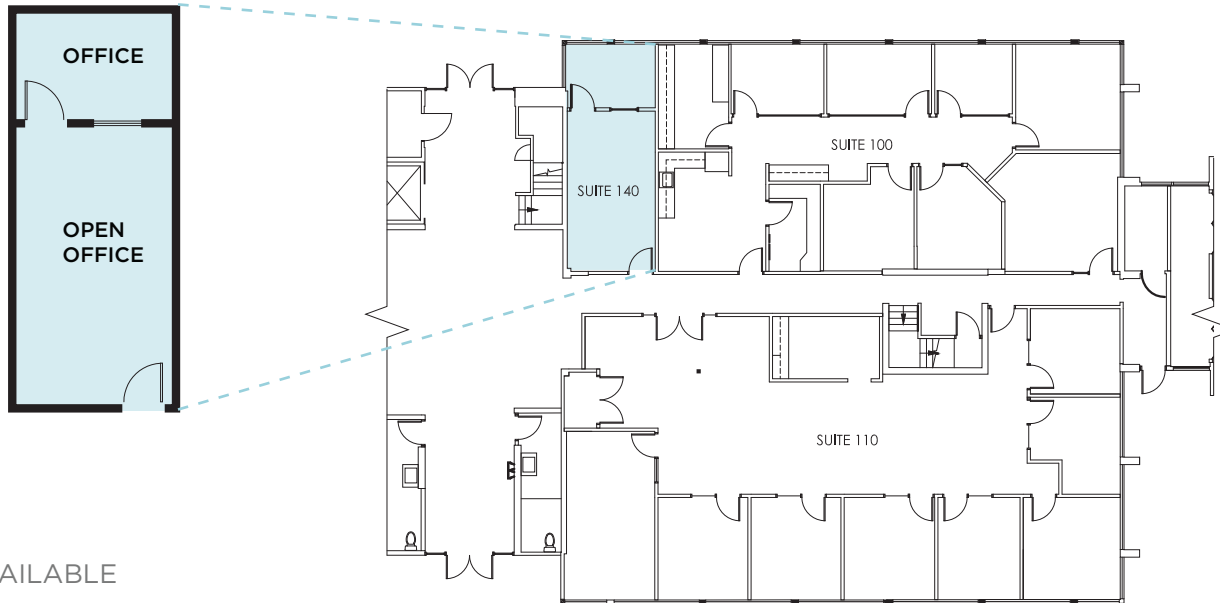
Greg Pickett
Executive Managing Director
+1 650 320 0226
greg.pickett@cushwake.com
LIC #01846327





FLOOR PLAN

Suite 140 : ±394 RSF



■ AVAILABLE

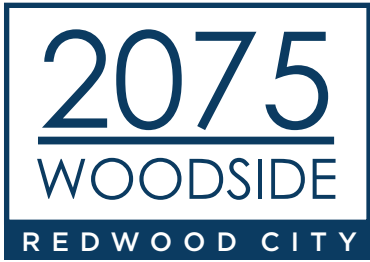
Floor plan not to scale



Brad Altick
Managing Director
+1 650 320 0214
brad.altick@cushwake.com
LIC #01877935

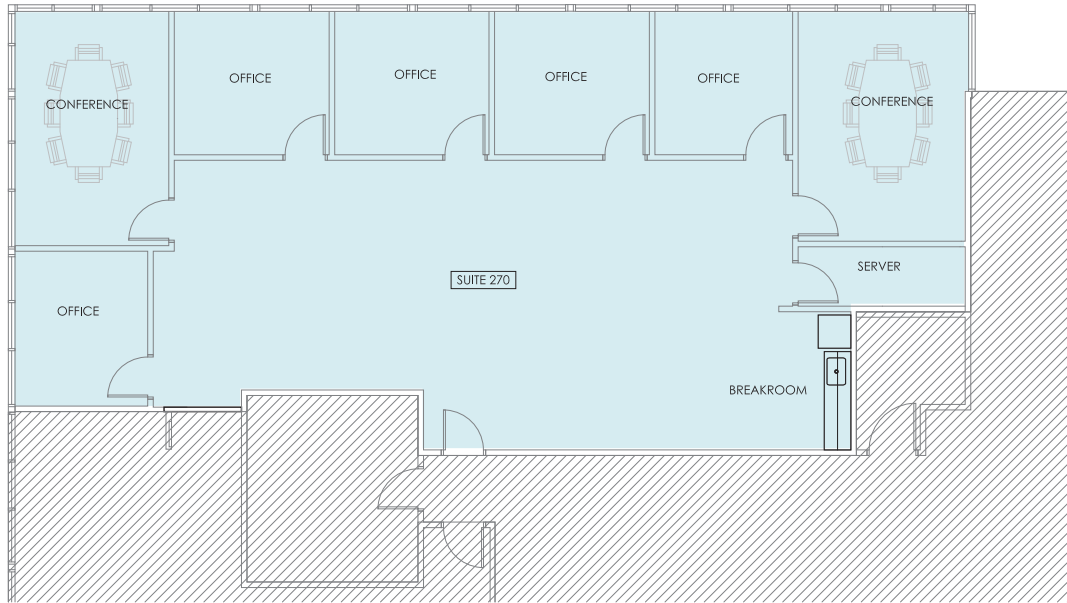
Greg Pickett
Executive Managing Director
+1 650 320 0226
greg.pickett@cushwake.com
LIC #01846327





FLOOR PLAN

Suite 270: ±2,851 RSF



■ AVAILABLE

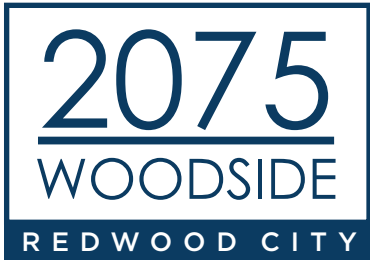
Floor plan not to scale



Brad Altick
Managing Director
+1 650 320 0214
brad.altick@cushwake.com
LIC #01877935

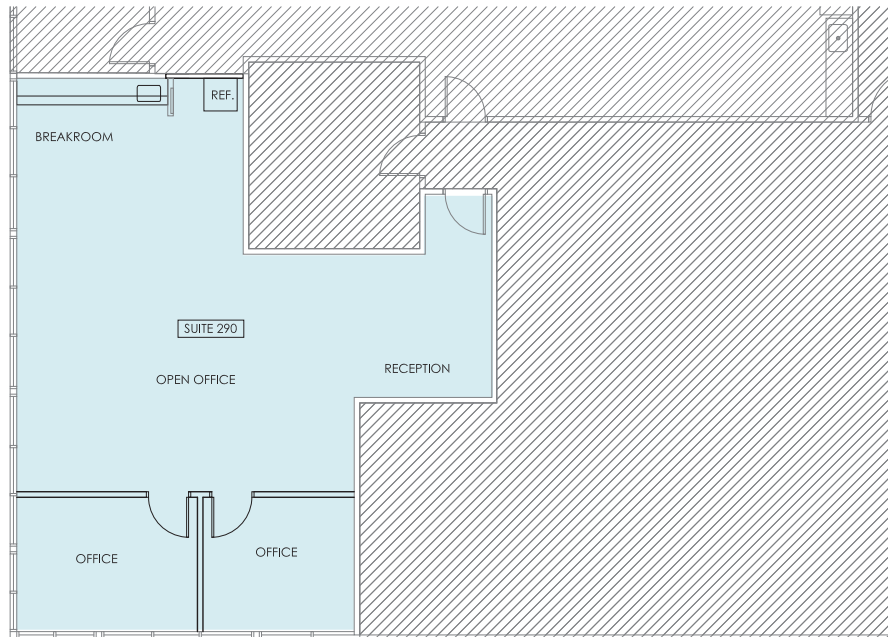
Greg Pickett
Executive Managing Director
+1 650 320 0226
greg.pickett@cushwake.com
LIC #01846327





FLOOR PLAN

Suite 290 : ±1,076 RSF



■ AVAILABLE

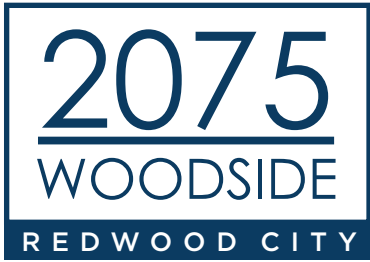
Floor plan not to scale



Brad Altick
Managing Director
+1 650 320 0214
brad.altick@cushwake.com
LIC #01877935

Greg Pickett
Executive Managing Director
+1 650 320 0226
greg.pickett@cushwake.com
LIC #01846327





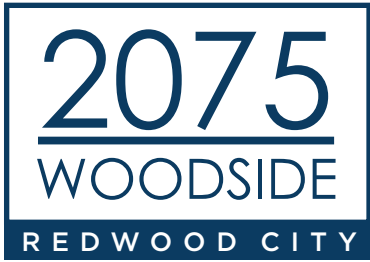
PHOTOS



Brad Altick
Managing Director
+1 650 320 0214
brad.altick@cushwake.com
LIC #01877935

Greg Pickett
Executive Managing Director
+1 650 320 0226
greg.pickett@cushwake.com
LIC #01846327





PROXIMITY TO AMENITIES



Brad Altick
Managing Director
+1 650 320 0214
brad.altick@cushwake.com
LIC #01877935

Greg Pickett
Executive Managing Director
+1 650 320 0226
greg.pickett@cushwake.com
LIC #01846327

