

Office/Redevelopment

906 W. Poinsett St. Greer, SC 29650

NAI Earle Furman

FOR SALE OR LEASE



Property Features

- 3,500 SF building ideal for general office, dentist, or medical office
- 0.56 acres
- Ample on-site parking
- Excellent location just moments from heavily trafficked Wade Hampton Blvd, retail, office, and Downtown Greer
- VPD on Wade Hampton Blvd: 27,300
- Plumbing available in multiple rooms
- Sale Price: \$590,000.00
- Lease Rate: \$1,500/Month Including Taxes and Insurance



✉ **John Gray, Jr., CCIM**
O: +1 864 232 9040
C: +1 864 414 1440
jgray@naiearlefurman.com

✉ **Drew Stamm**
O: +1 864 232 9040
dstamm@naiearlefurman.com

✉ **Michael Roth**
O: +1 864 232 9040 x5946
mroth@naiearlefurman.com

📍 **101 E Washington St**
Greenville, SC 29601
naief.com

Property Photos

906 W. Poinsett St. Greer, SC 29650



✉ **John Gray, Jr., CCIM**
O: +1 864 232 9040
C: +1 864 414 1440
jgray@naiearlefurman.com

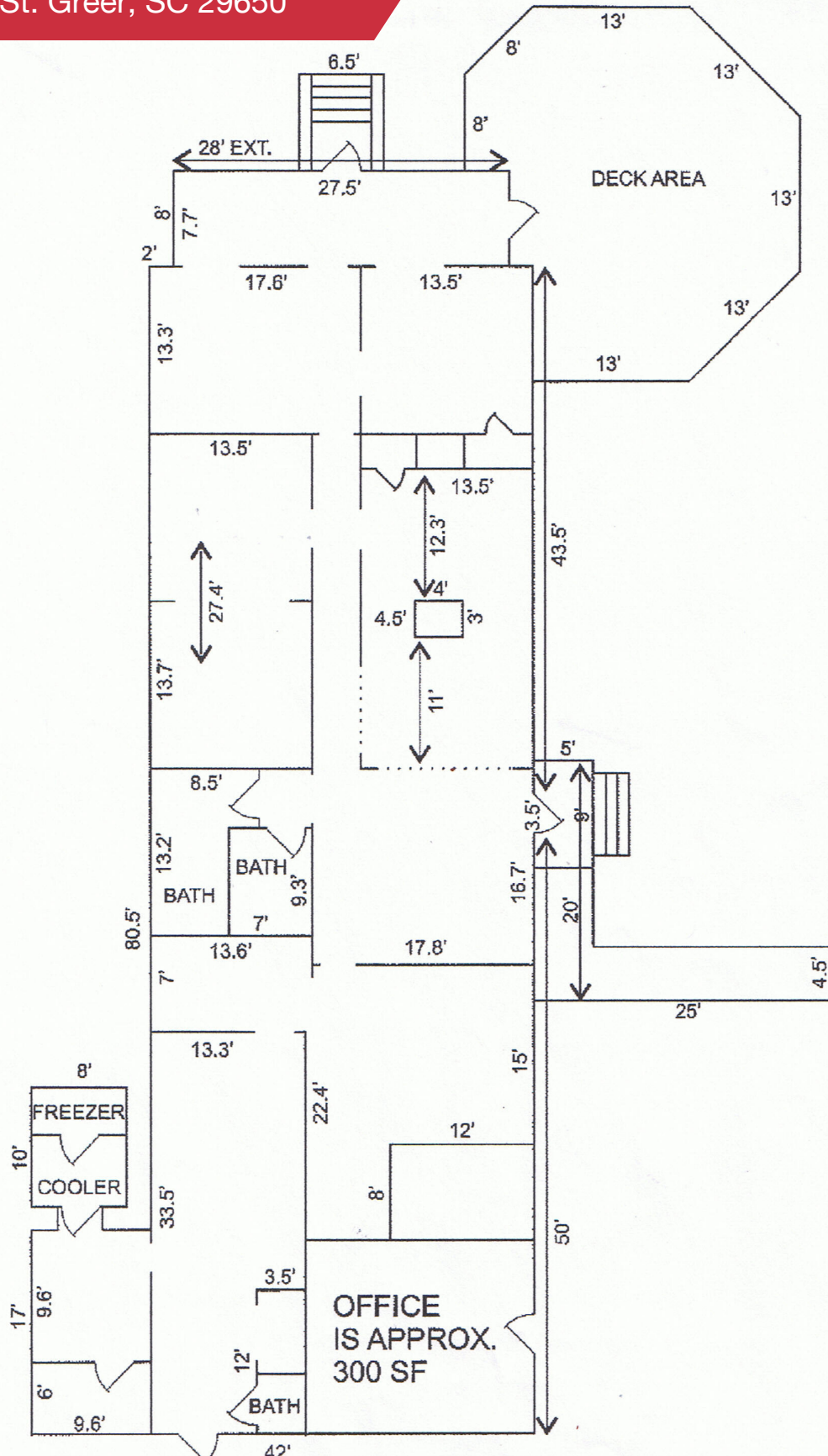
✉ **Drew Stamm**
O: +1 864 232 9040
dstamm@naiearlefurman.com

✉ **Michael Roth**
O: +1 864 232 9040 x5946
mroth@naiearlefurman.com

NAI Earle Furman

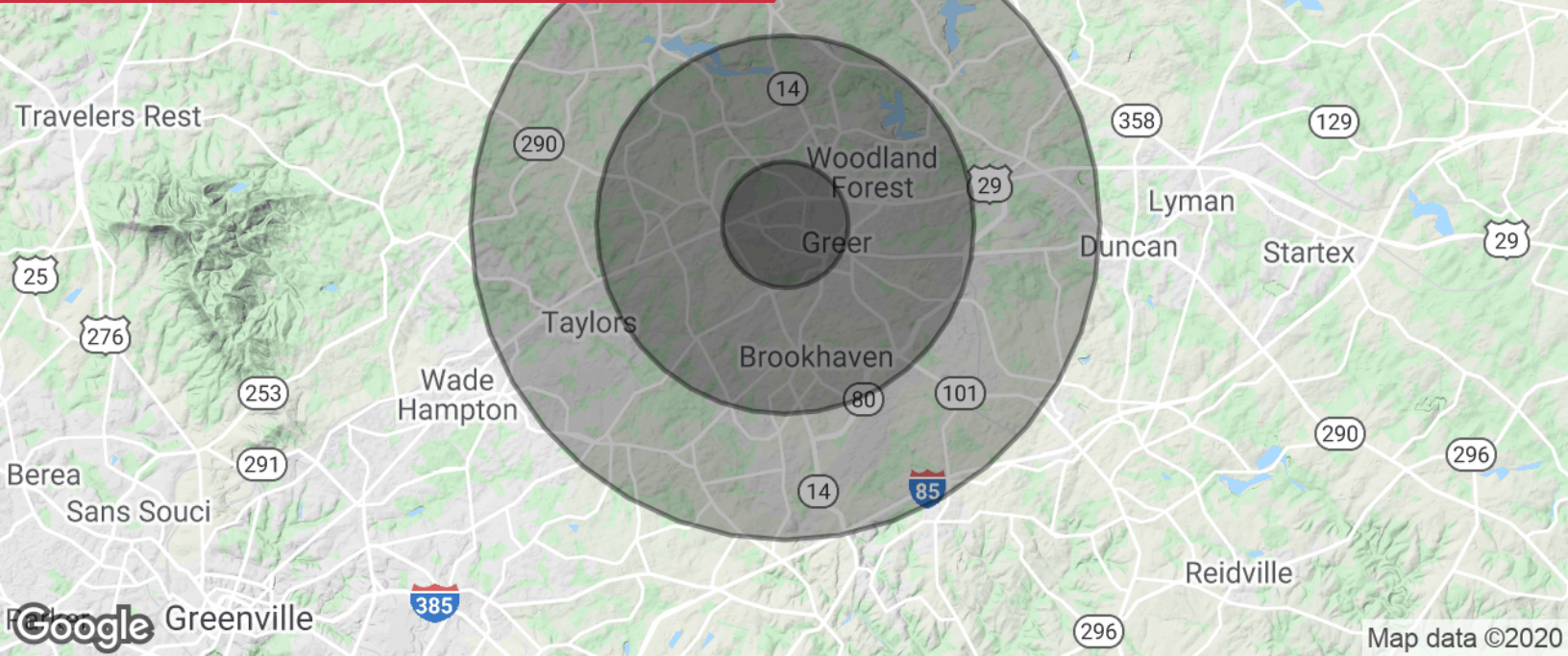
Floor Plan

906 W. Poinsett St. Greer, SC 29650



Demographics

906 W. Poinsett St. Greer, SC 29650



Population

	1 Mile	3 Miles	5 Miles
Total population	5,325	35,088	71,696
Median age	38.9	38.1	38.5
Median age (male)	39.6	37.2	37.2
Median age (Female)	37.0	38.8	39.4

Households & Income

	1 Mile	3 Miles	5 Miles
Total households	2,532	14,804	28,707
# of persons per HH	2.1	2.4	2.5
Average HH income	\$44,868	\$53,611	\$62,943
Average house value	\$83,154	\$122,997	\$166,227

* Demographic data derived from 2010 US Census