



Site

CORNER
95TH ST
52ND AV

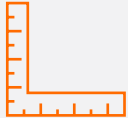
Metra
OAKLAWN STATION

STARBUCKS
POTBELLY
smashburger
T-Mobile

pace

5151
WEST 95TH STREET
OAK LAWN, IL 60453

Medical Space Available For Lease



3,319
Square Feet
Medical Space



Elevator
Access
to Floor



1 Mile From
Advocate Christ
Medical Center



3 Miles to
I-294 via
95TH Street



Around Corner
from Oak Lawn
Metra Station



5 Miles to
Chicago Midway
Int'l Airport

Address

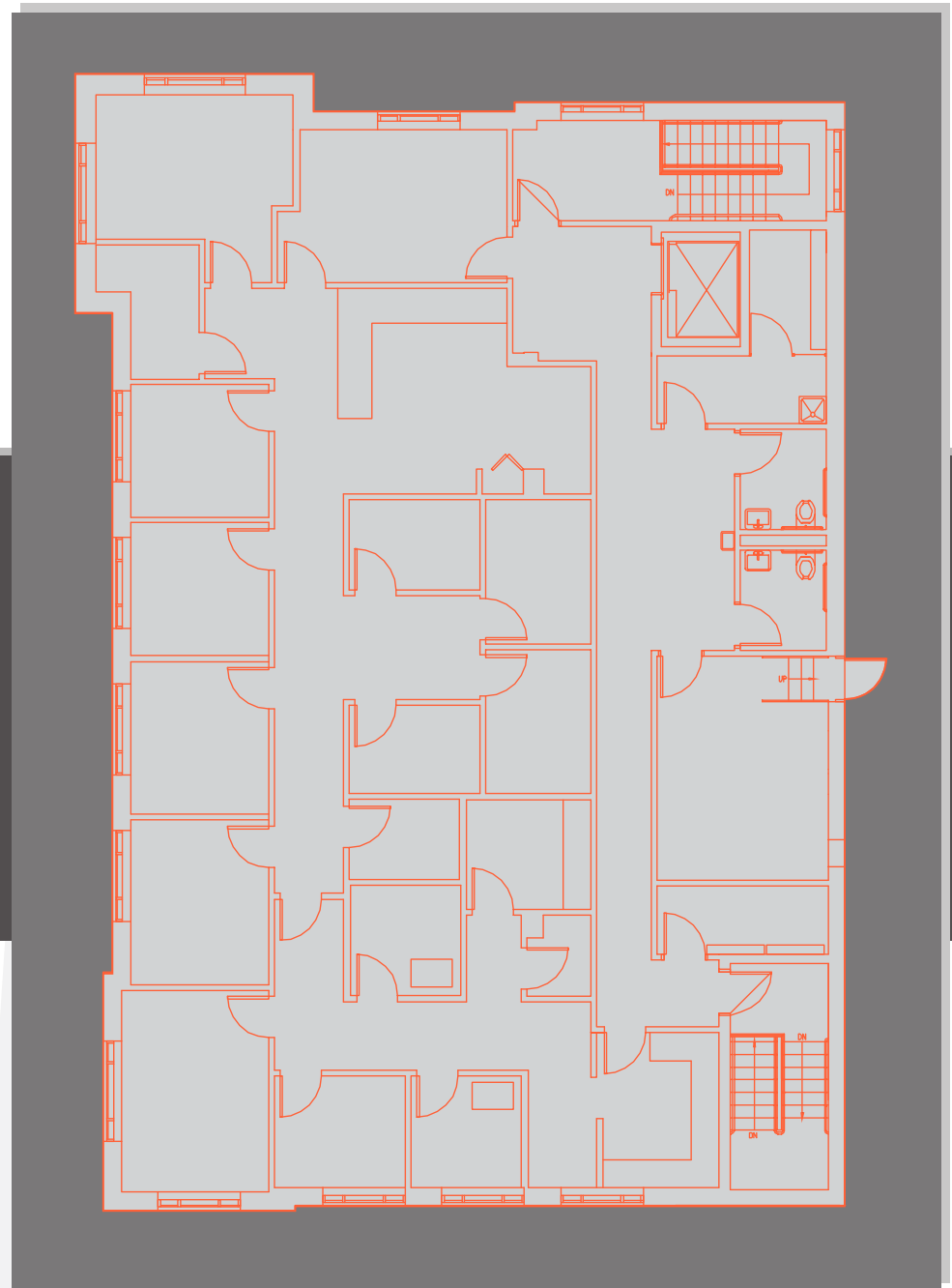
- ◆ 5151 West 95TH Street
Oak Lawn, IL 60453

Space Highlights

- ◆ Fully Carpeted
- ◆ Reception
- ◆ Direct Elevator Exposure
- ◆ Drop Ceiling
- ◆ Natural Light
- ◆ Medical Exam Room(s)
- ◆ Partitioned Offices
- ◆ Print/Copy Room

Asking Price

- ◆ \$20.00 PSF Modified Gross



Photos

Clockwise from Top Right

- ◆ Reception
- ◆ Medical Cabinets and Sink
- ◆ Waiting Room Window
- ◆ Front of Building



S 52ND AV

5151 95TH STREET
OAK LAWN, IL 60453



METRA RAIL

95TH STREET

Metra
OAK LAWN STATION



 Advocate
Christ Medical Center
Inspiring medicine. Changing lives.

1 MILE
TRAVEL ROUTE
TO NEAREST
HOSPITAL
VIA 95TH ST

Walgreens

Metra
OAK LAWN STATION

**5151 95TH STREET
OAK LAWN, IL 60453**



Disclaimer

The information contained in the memorandum has been obtained from sources we believe to be reliable; however, Landmark Partners Commercial Real Estate, LLC, or any of their officers, employees, or agents, has not verified, and will not verify, any of the information contained herein and makes no warranty or representation whatsoever regarding the accuracy or completeness of the information provided. This memorandum does not purport to be all-inclusive or to contain all the information which prospective lessee or purchaser may desire. References to square footage or age are approximate. No legal liability is assumed or shall be implied with respect thereto.

The owner expressly reserves the right at its sole discretion to reject any or all proposals or expressions of interest in the property and to terminate discussions with any party at any time with or without notice.


Agency Disclosure:

Ron Roberti ("Licensee") of Landmark Partners Commercial Real Estate, LLC is acting solely on behalf of the Owner or Lessor of the real estate and any information given to the Licensees by the Purchaser/Lessee may be disclosed to the Owner/Lessor.

For more information, please contact:

Ron Roberti

Vice President

 847.649.2666

 RRoberti@LPcommercial.com



LANDMARK PARTNERS
COMMERCIAL REAL ESTATE

1699 E. Woodfield Road | Suite 202 | Schaumburg Illinois 60173