

FOR LEASE



PROPERTY SUMMARY

Located within **Summerlin Bend Professional Park**, this 6,100± SF medical space is fully built-out and features many turn-key exam rooms. Building and Monument signage on Summerlin Rd. included.

Conveniently located off Summerlin Rd. (between Boy Scout Dr. and Colonial Blvd.) with easy access to US 41.

DEMOGRAPHICS

2017	1 Mile	3 Miles	5 Miles
Population	13,000	65,199	155,106
Avg. HH Income	\$60,635	\$63,941	\$68,720
Households	5,402	29,224	70,823

PROPERTY HIGHLIGHTS

AVAILABLE	6,100± SF (Max. contiguous to 10,525± SF)
RENTAL RATE	\$12.00 PSF NNN
UNIT NUMBER	102
ZONING	PO – Professional Office (City of Fort Myers)
YEAR BUILT	2000
PARCEL ID	02-45-24-P4-02700.0070



CONTACT:

Thomas Pepitone
 239.321.5151 x114
 tom@pepitonerealty.com

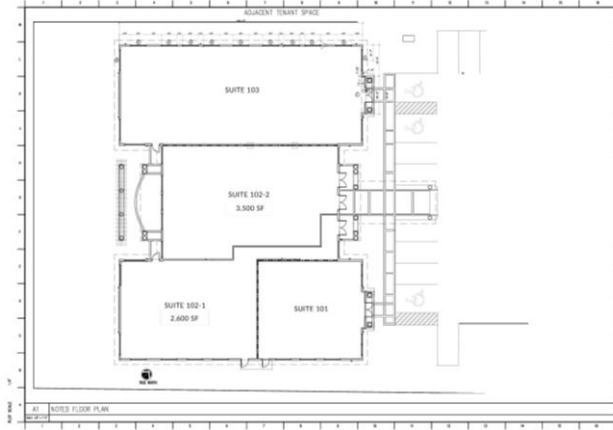
www.pepitonerealty.com

Pepitone Properties Corp.
 8890 Salrose Lane, Suite 200
 Fort Myers, FL 33912

FLOOR PLAN – UNIT 102



ALTERNATIVE FLOOR PLANS



CONTACT:

Thomas Pepitone
 239.321.5151 x114
 tom@pepitonerealty.com

www.pepitonerealty.com

Pepitone Properties Corp.
 8890 Salrose Lane, Suite 200
 Fort Myers, FL 33912