

# BERING/ZANKER BUSINESS PARK

2349 BERING DRIVE, SAN JOSE, CALIFORNIA | ±8,390 SF FOR LEASE



2347

2349

2349

For more information, please contact:

**Liam Martin**  
Associate  
+1 408 436 3619  
liam.martin@cushwake.com  
LIC #02081625

**Steve Pace**  
Executive Director  
P +1 408 615 3419  
steve.pace@cushwake.com  
LIC #00817396

**Dan Hollingsworth**  
Executive Managing Director  
P +1 408 615 3431  
dan.hollingsworth@cushwake.com  
LIC #01117716



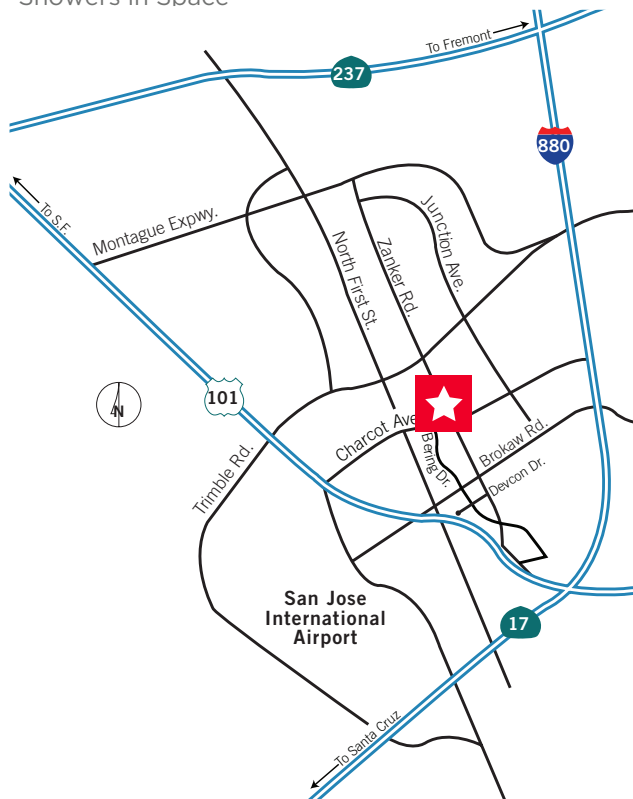
DOLLINGER PROPERTIES



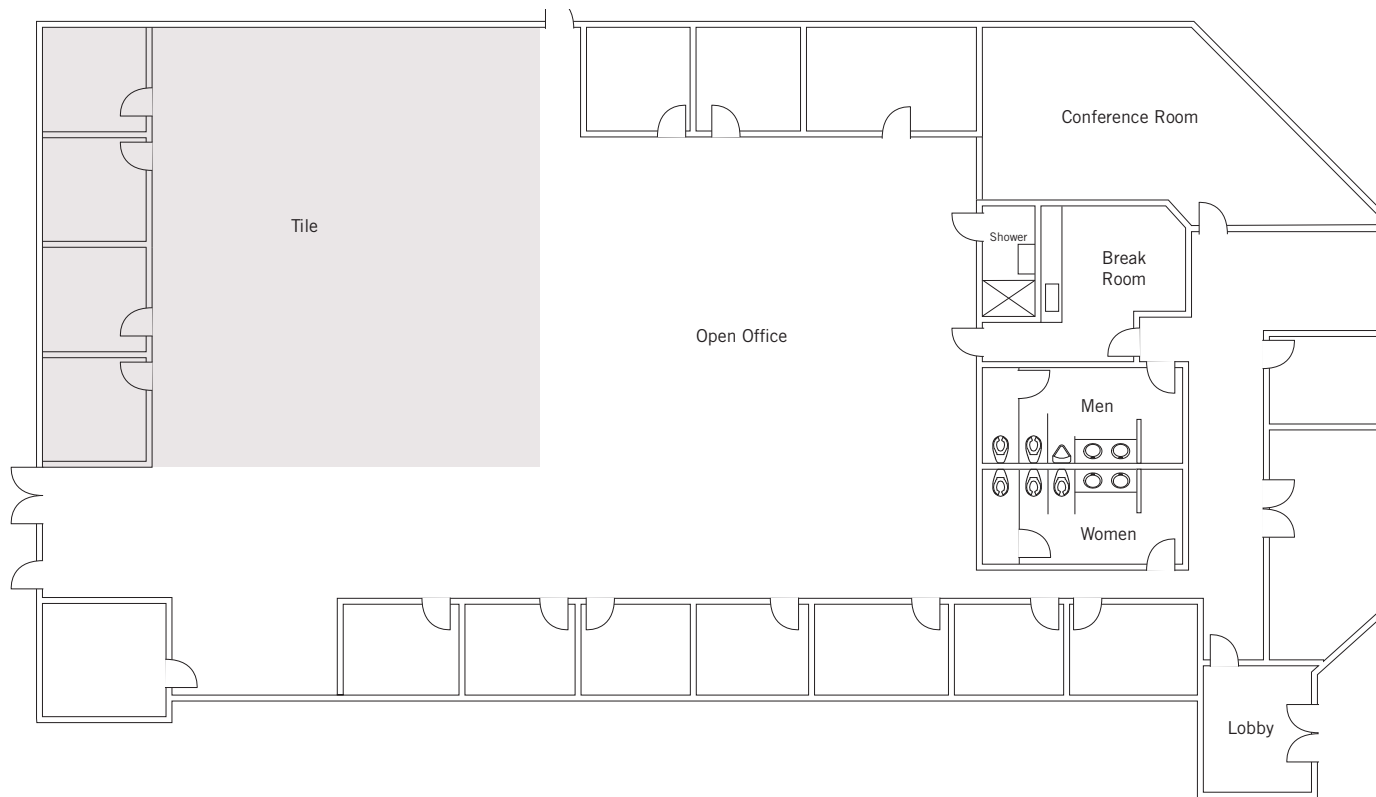
**CUSHMAN &  
WAKEFIELD**

### Highlights

- Office/R&D
- High Image North San Jose location
- 4/1,000 Parking
- Easy Access to Highways 101 & 880
- Walk to Light Rail Station
- Lab Space
- Showers in Space



## Floor Plan | ±8,390 SF



- **Power:**  
400 Amps @ 480 Volts
- **100% HVAC**
- **Description**  
Reception, perimeter  
privates, showers, break  
room, large conference room,  
lab, server room, corner  
space, great window line

## Public Transit and Amenities

