



12TH & WALL STREET RETAIL/ POTENTIAL FOOD USE SPACE FOR LEASE

1200 WALL STREET, LOS ANGELES, CA 90015

David Ashkenasy
Senior Managing Director
P 310.272.7381
E davida@cag-re.com
Lic. 01714442

Ryan Schimel
Director
P 310.272.7384
E ryans@cag-re.com
Lic. 01879511

cag | COMMERCIAL
ASSET GROUP



12TH & WALL STREET - EXCELLENT GROUND FLOOR RETAIL OR FOOD USE SPACE

1200 WALL STREET, LOS ANGELES, CA 90015

Highlights

- Amazing Frontage
- High Ceilings
- Unbelievable Foot Traffic - 78 out of 100 Walkability Score
- Large On-site Parking Structure
- Tremendous Signage Opportunity
- Close to Fashion District, Broadway and Many of the New Mixed-Use Developments in South Park

Size: +/- 2,772 Square Feet

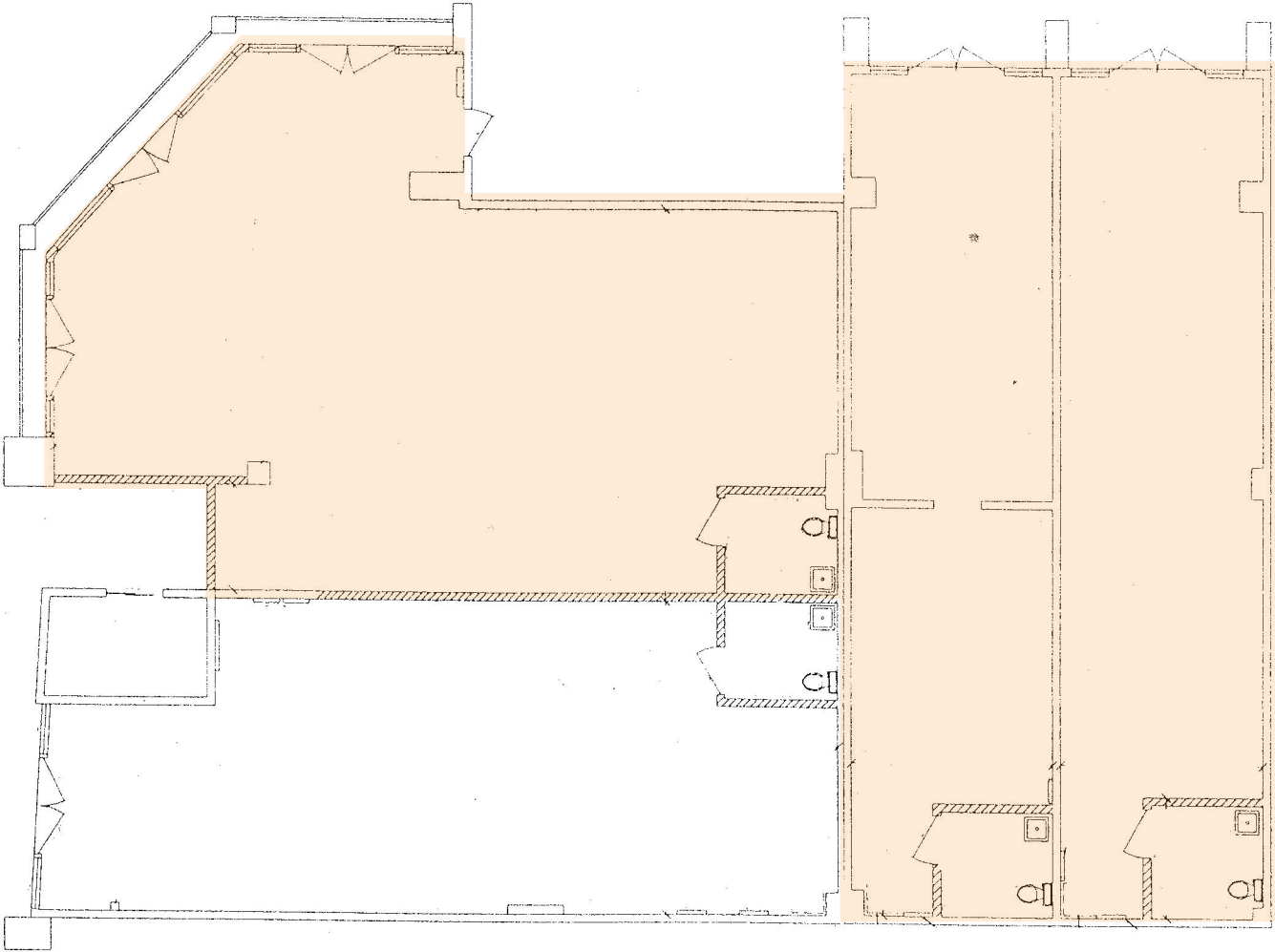
Rental Rate: \$5.00 Per Square Foot (Modified Gross)

Possession: Available Immediately

Parking: Large On-site Parking Structure

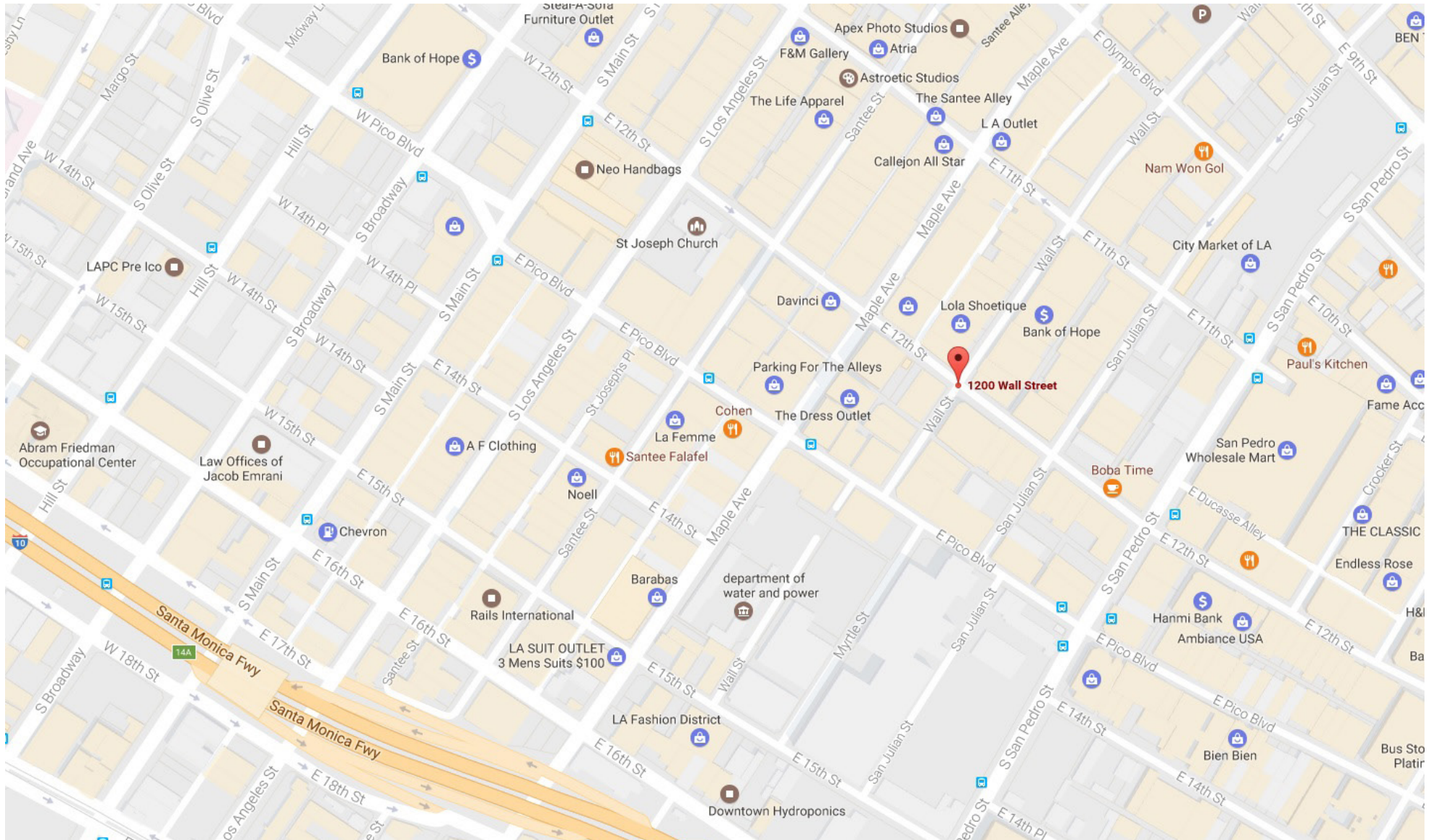
FLOOR PLAN

1200 WALL STREET, LOS ANGELES, CA 90015



MAP

1200 WALL STREET, LOS ANGELES, CA 90015





For more information, please call.



1801 Century Park East, Suite 1420
Los Angeles, California 90067
Phone 310.275.8222 Fax 310.275.8223
www.cag-re.com
License #01876070

David Aschkenasy
Senior Managing Director
P 310.272.7381
E davida@cag-re.com
Lic: 01714442

Ryan Schimel
Director
P 310.272.7384
E ryans@cag-re.com
Lic: 01879511

These materials are based on information and content provided by others, which we believe are accurate. No guarantee, warranty or representation is made by Commercial Asset Group, Inc. or its personnel. All interested parties must independently verify accuracy and completeness. As well, any projections, assumptions, opinion, or estimates are used for example only and do not represent the current or future performance of the identified property. Your tax, financial, legal and toxic substance advisors should conduct a careful investigation of the property and its suitability for your needs, including land use limitations. The property is subject to prior lease, sale, change in price, or withdrawal from the market without notice.