

I-4 Frontage Lee Rd - Free-Standing Office Building



PROPERTY DESCRIPTION

I-4 Frontage @ Lee Rd.
Free-Standing Office Building
Located in between Fields Land Rover & Mini Cooper

OFFERING SUMMARY

Lease Rate:	Negotiable
Building Size:	8,384 SF

PROPERTY HIGHLIGHTS:

- Mix of private offices, conf rooms and open work areas
- 47 parking spaces (5.6/1000)
- Fiber to building
- Fully network cabled to offices
- 16' clear height in open areas
- A/C warehouse (\pm 1,300 SF) with roll-up door
- Building & monument signage

LEE ZERIVITZ, SIOR, CCIM
Managing Partner
407.644.CITY
lee@citycommercial.com

CITY COMMERCIAL
1101 Symonds Ave.
Winter Park, FL 32789
CITYcommercial.com



FOR LEASE

257 S. LAKE DESTINY DRIVE | ORLANDO, FL 32810

Photos



LEE ZERIVITZ, SIOR, CCIM
Managing Partner
407.644.CITY
lee@citycommercial.com

CITY COMMERCIAL
1101 Symonds Ave.
Winter Park, FL 32789
CITYcommercial.com



FOR LEASE

257 S. LAKE DESTINY DRIVE | ORLANDO, FL 32810

Photos

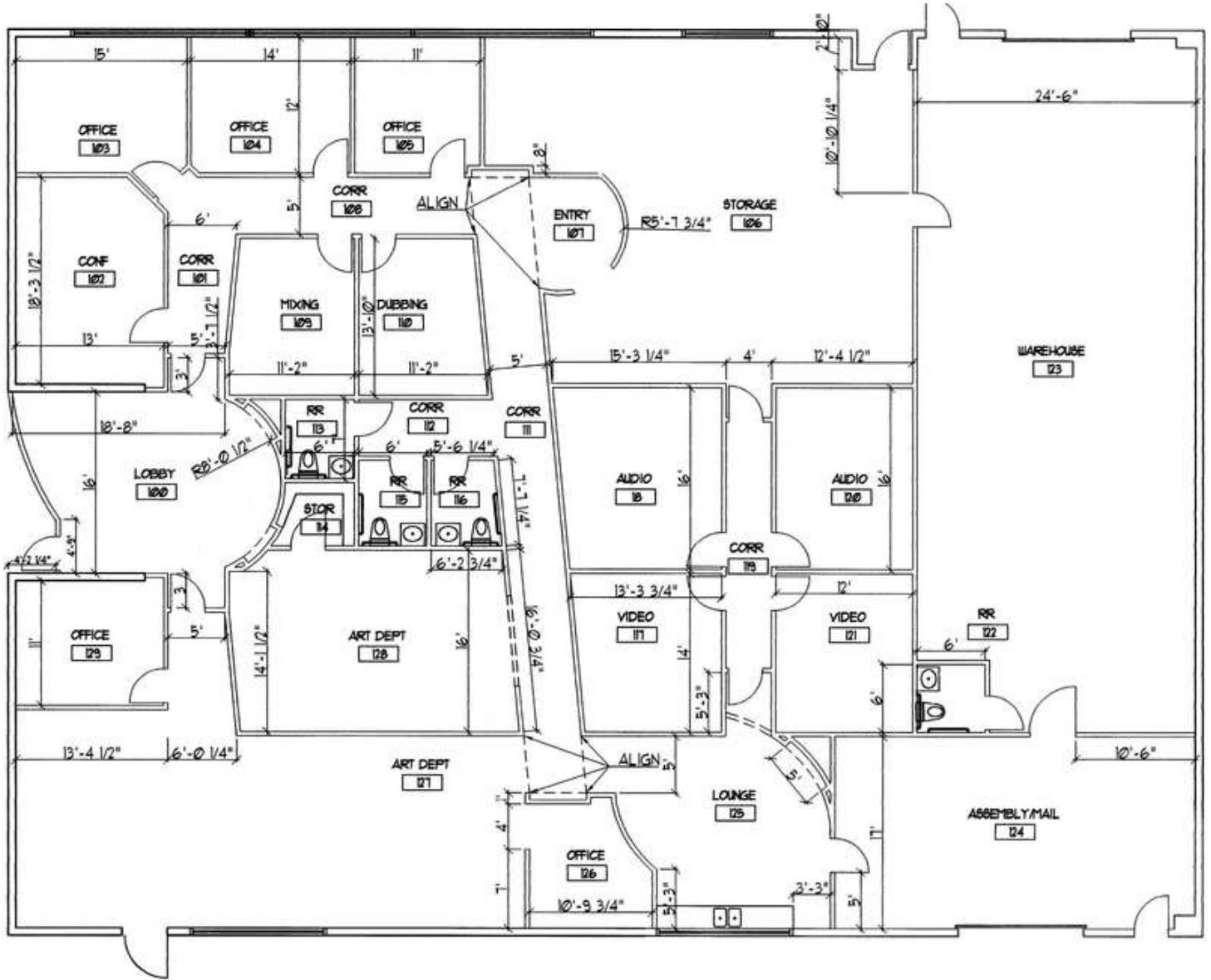


LEE ZERIVITZ, SIOR, CCIM
Managing Partner
407.644.CITY
lee@citycommercial.com

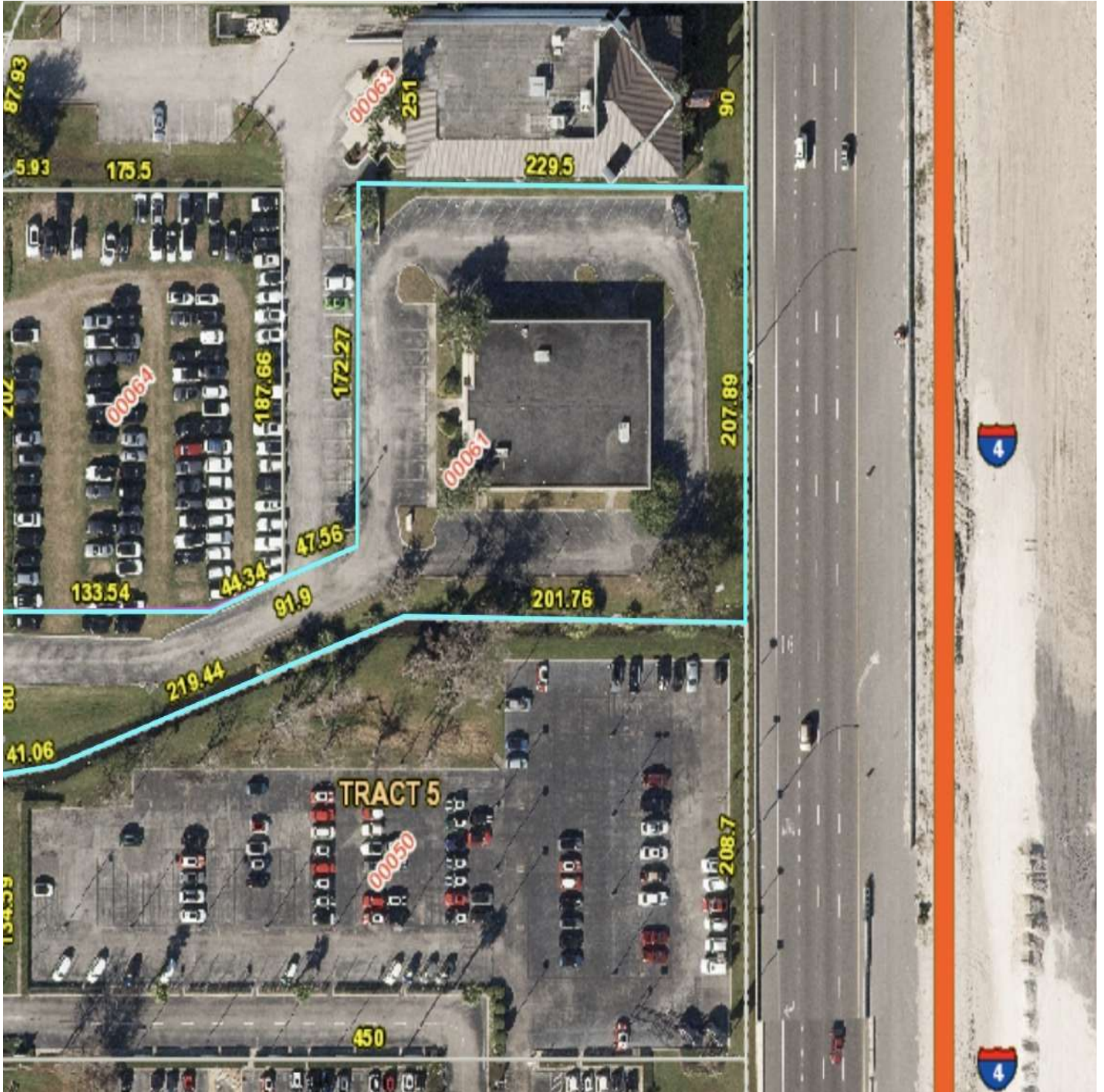
CITY COMMERCIAL
1101 Symonds Ave.
Winter Park, FL 32789
CITYcommercial.com



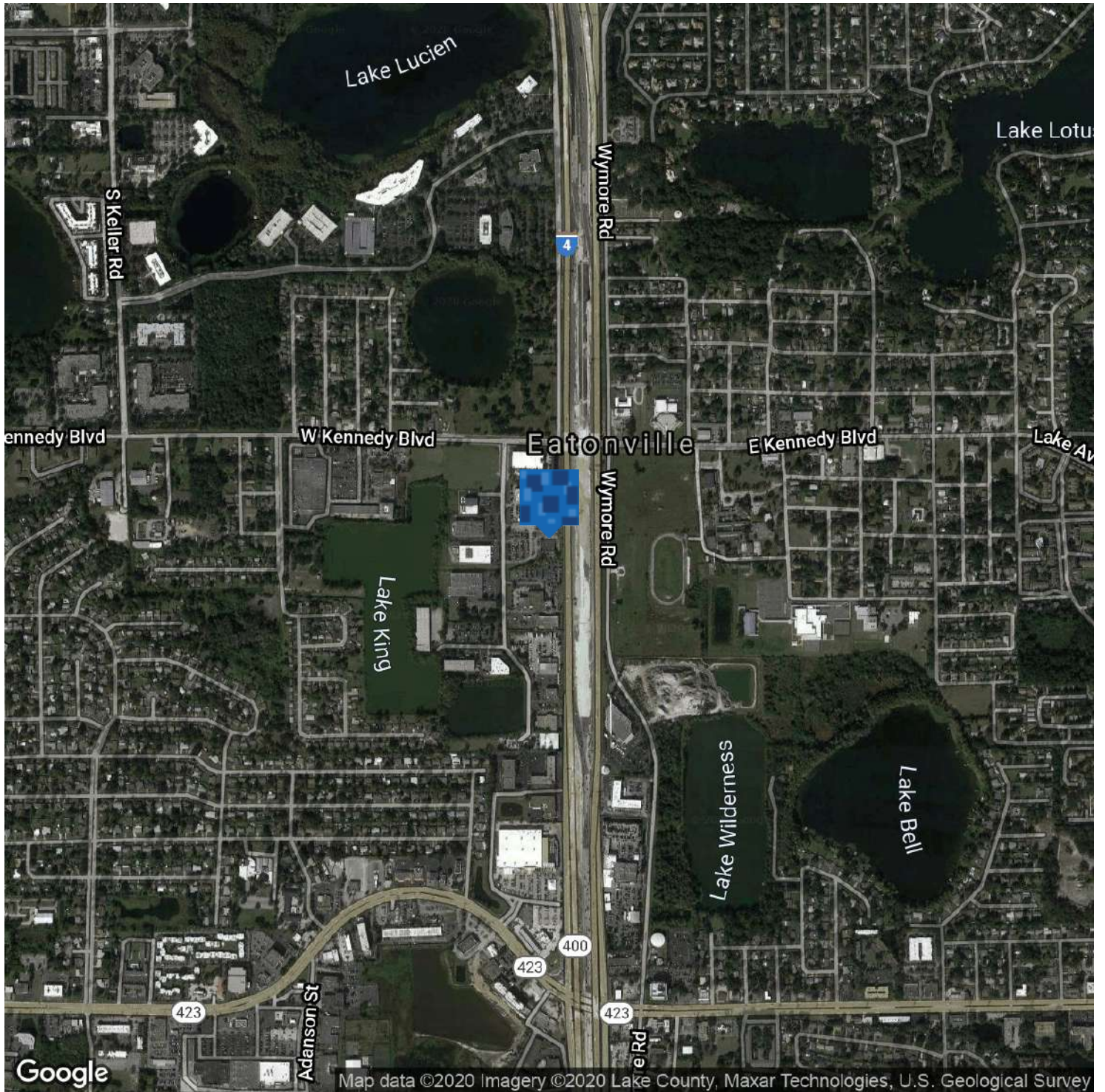
Space Plan



Aerial View



Location Map



LEE ZERIVITZ, SIOR, CCIM
Managing Partner
407.644.CITY
lee@citycommercial.com

CITY COMMERCIAL
1101 Symonds Ave.
Winter Park, FL 32789
CITYcommercial.com

