



675 South Arroyo Parkway

Pasadena, California 91105

Property Highlights

- Professionally managed and maintained office property
- Convenient access to 110 Freeway
- Valet parking provided
- Located along the recently remodeled stretch of Arroyo Parkway.
- Beautiful medical space
- Walking distance to the Fillmore Goldline Station
- 4 Story Office Building totaling 31,294 RSF
- Parking: 3:1000 \$70 per space per month



Space	Lease Rate	Size (SF)
Suite 300	\$2.60 SF/MONTH	2,392 SF
Suite 430	\$2.60 SF/MONTH	2,128 SF
Suite 420	\$2.60 SF/MONTH	1,571 SF
Suite 420 & 430 (combined)	\$2.60 SF/MONTH	3,699 SF

For more information:

John Martin

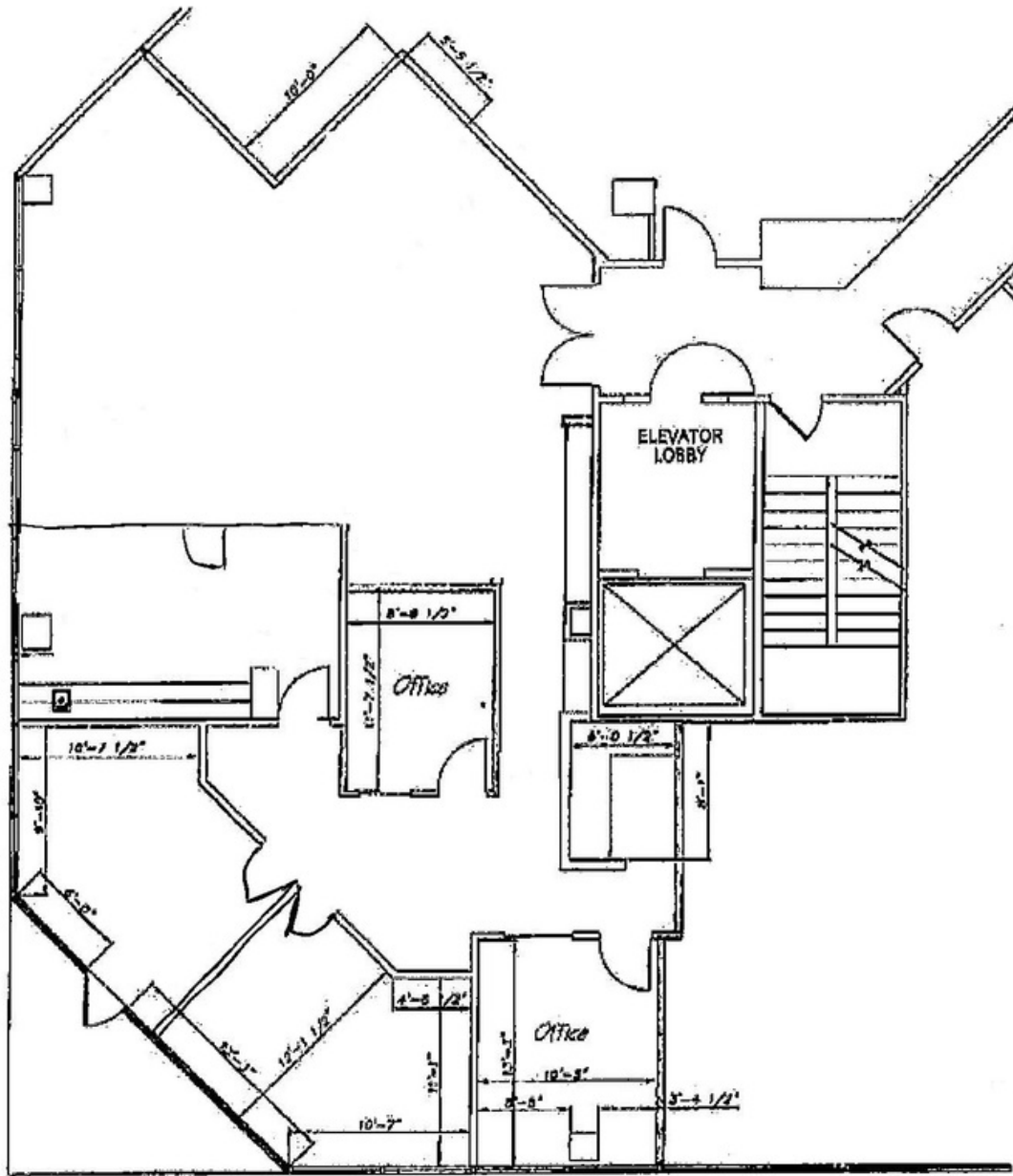
626 204 1503 • jmartin@naicapital.com • CA CalDRE #01280892

Scott Martin

626 204 1504 • smartin@naicapital.com • CA CalDRE #00992387

For Lease

675 South Arroyo Parkway



675 S Arroyo Pkwy, Pasadena, CA

Suite 300

1/8" = 1'-0"



John Martin

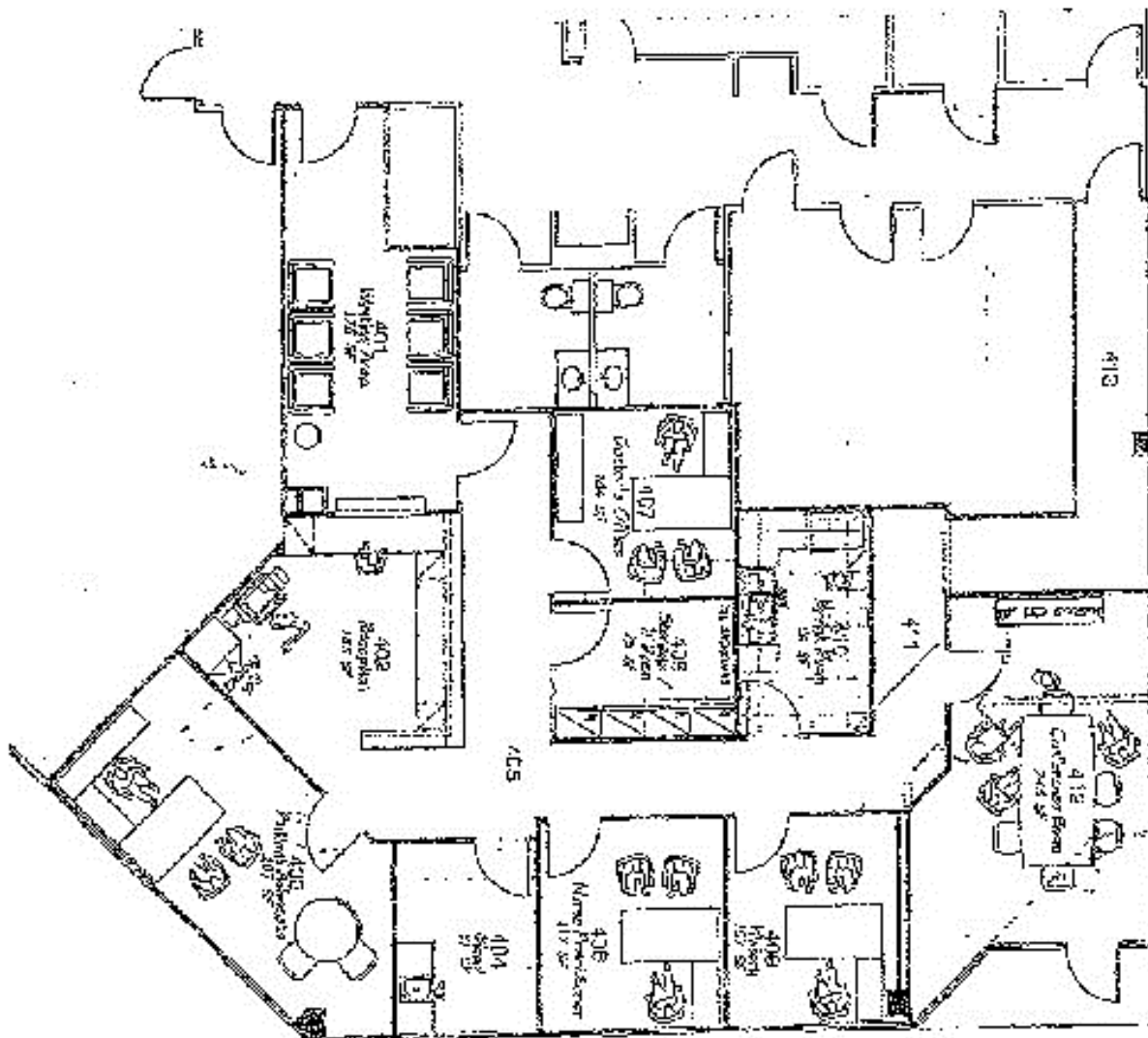
626.204.1503
jmartin@naicapital.com
CalDRE #01280892

Scott Martin

626.204.1504
smartin@naicapital.com
CalDRE #00992387

For Lease

675 South Arroyo Parkway



Suite 430

John Martin

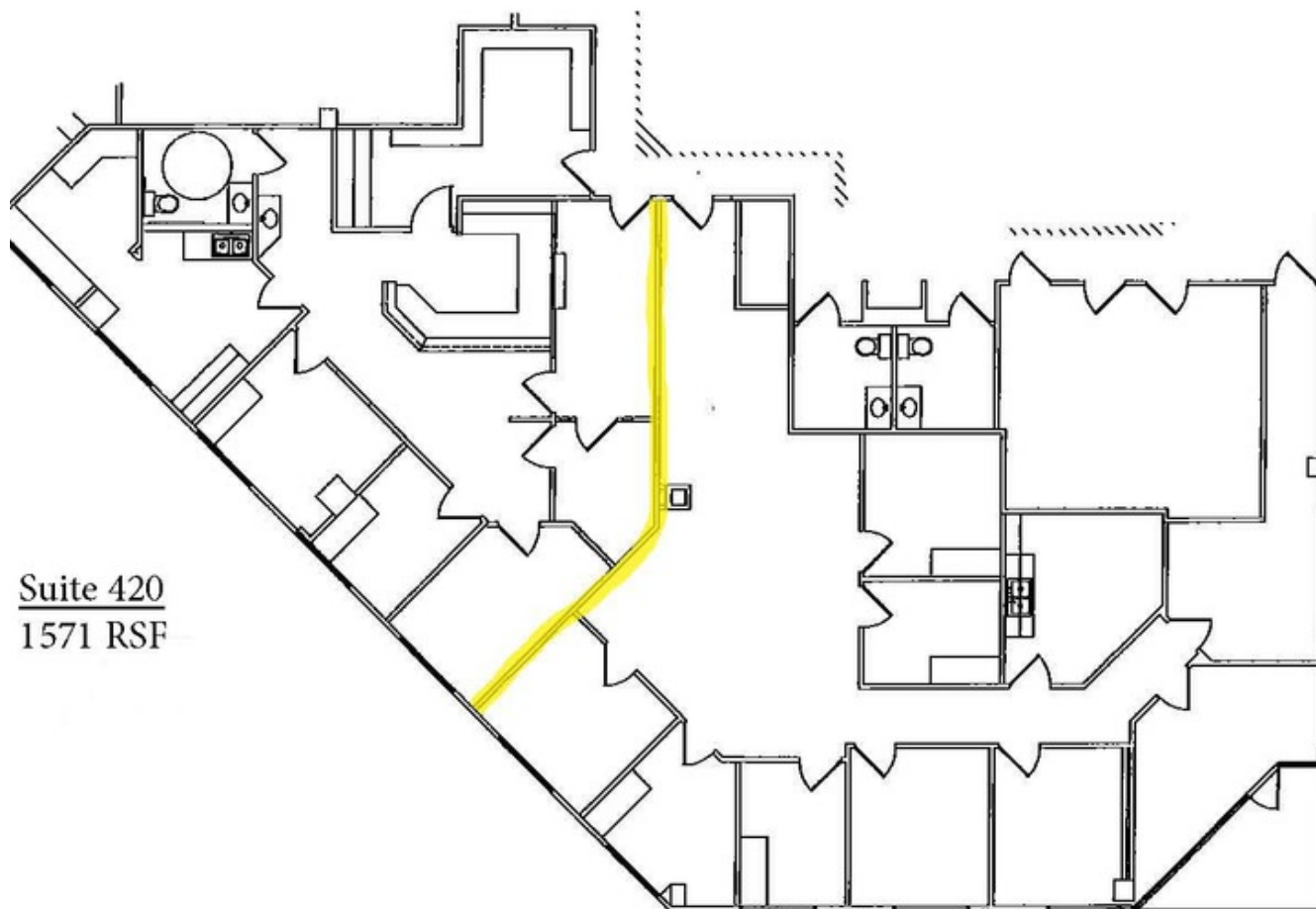
626.204.1503
jmartin@naicapital.com
CalDRE #01280892

Scott Martin

626.204.1504
smartin@naicapital.com
CalDRE #00992387

For Lease

675 South Arroyo Parkway



Suite 420
1571 RSF

Suite 430
2128 RSF

John Martin
626.204.1503
jmartin@naicapital.com
CalDRE #01280892

Scott Martin
626.204.1504
smartin@naicapital.com
CalDRE #00992387