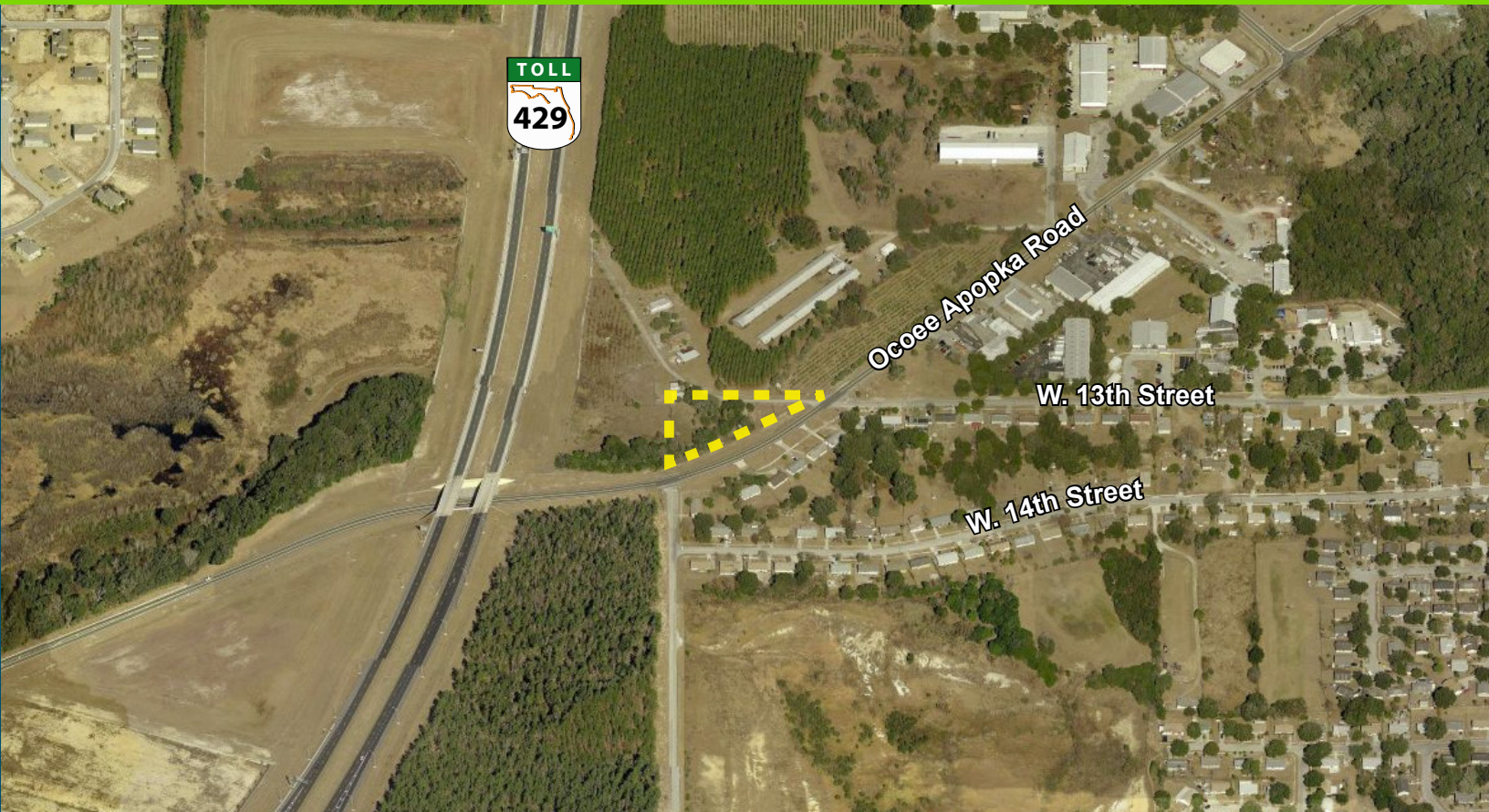


1.02 Acres Available For Sale



Ocoee Apopka Land

1250 Ocoee Apopka Rd. | Apopka, FL 32703

- 1.02 acres, zoned C-1
- Accessible from Ocoee Apopka Rd. from both going-in and coming home directions
- C-1 zoning allows a variety of uses including retail, banks, hotels, restaurants, etc
- Close to newly completed SR414 extension and SR451/SR429 interchange
- Over 400 ft of frontage on Ocoee Apopka Rd.
- 33,000+ households within a 5-mile radius

R. ANTHONY FISHER
407-691-0505
afisher@holdthyssen.com

301 S New York Ave.
Suite 200
Winter Park, FL 32789

www.holdthyssen.com

