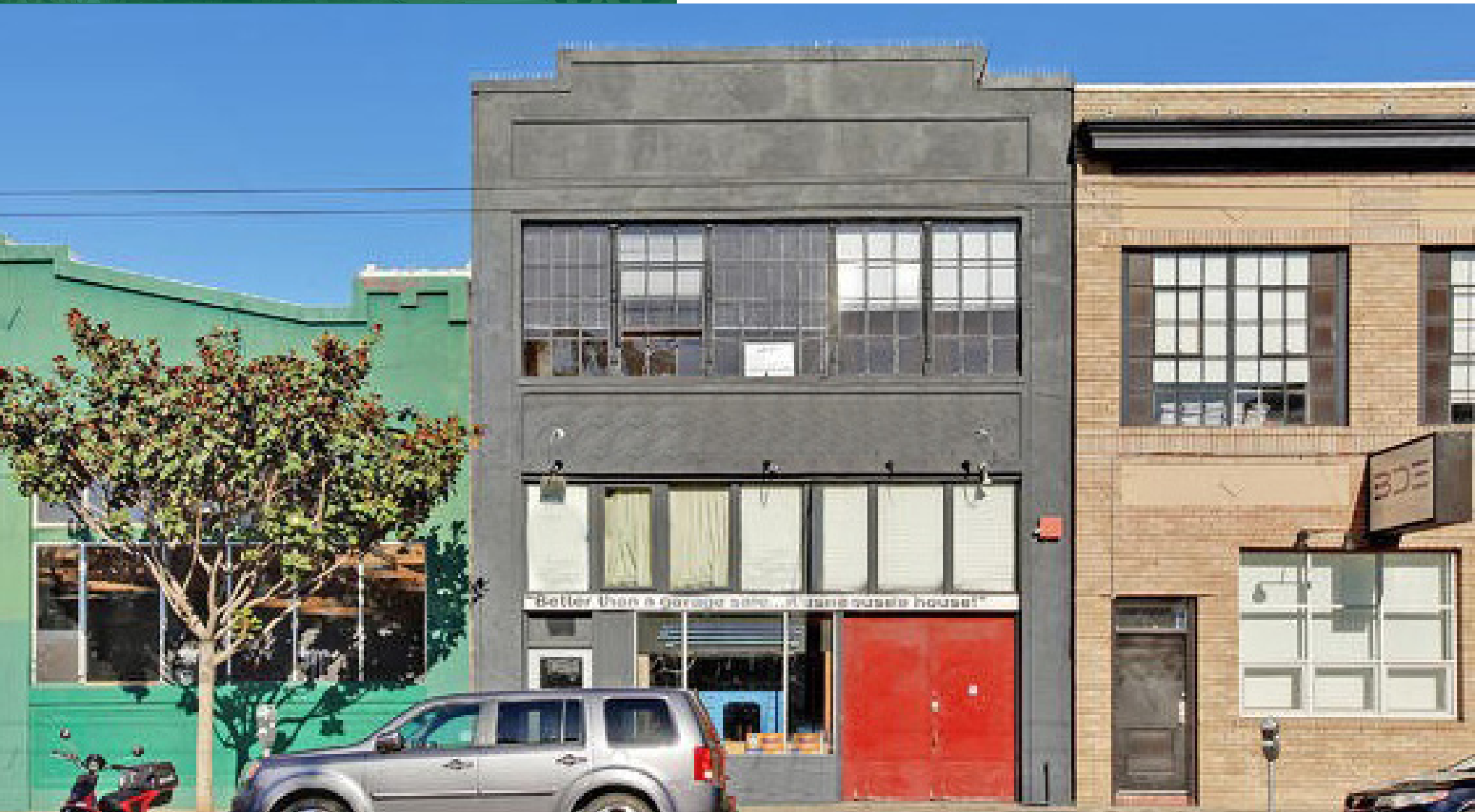


FOR
LEASE

952
HOWARD
STREET
SAN FRANCISCO

Lease Opportunity!

Full Building Flex Space
Located in West Yerba Buena



952 HOWARD STREET SAN FRANCISCO



OFFERING SUMMARY

Building Size:	3,375 SF
Year Built:	1923
Zoning:	MUR
Parcel:	3725-018
Lot Size:	2,247 SF

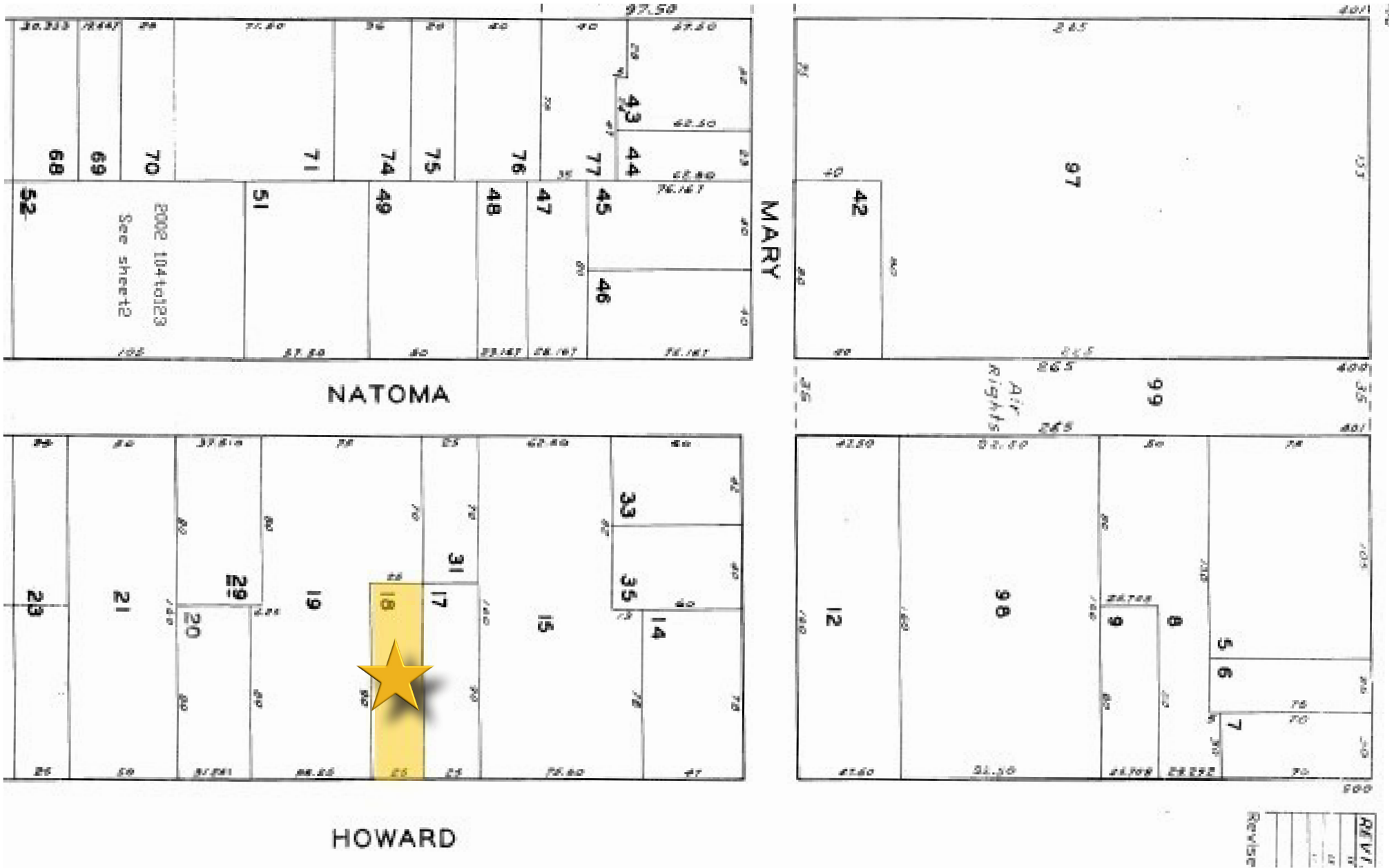
PROPERTY HIGHLIGHTS

- Ground floor: 2,178 SF
- Upper floor: 1,197 SF

PHOTOS



PARCEL MAP



NEIGHBORHOOD MAP

952 Howard Street, San Francisco, CA



Map data ©2019 Google Imagery ©2019, Data CSUMB

PROPOSED DEVELOPMENT

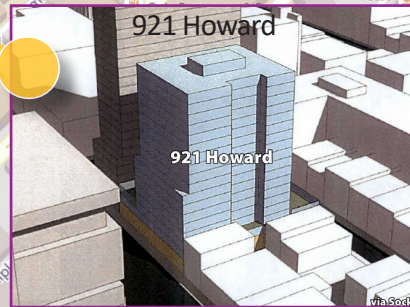
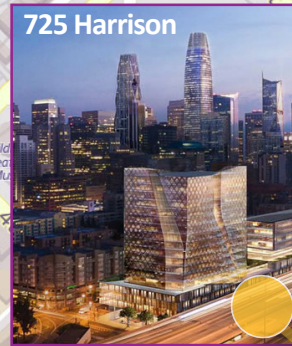
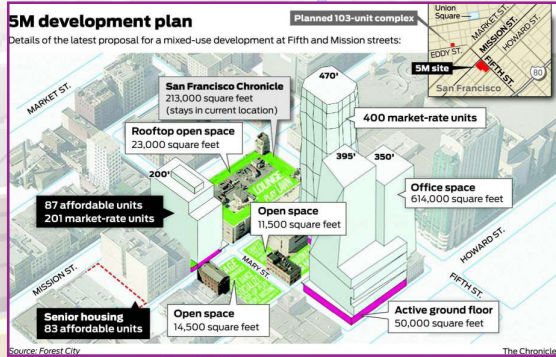
952 Howard Street, San Francisco, CA

SM development plan

Details of the latest proposal for a mixed-use development at Fifth and Mission streets:

Planned 103-unit complex

- San Francisco Chronicle: 213,000 square feet (stays in current location)
- Rooftop open space: 23,000 square feet
- 87 affordable units, 201 market-rate units
- Senior housing: 83 affordable units
- Open space: 11,500 square feet
- Open space: 14,500 square feet
- Active ground floor: 50,000 square feet
- Office space: 614,000 square feet
- 400 market-rate units





BARRY BRAM, CCIM

Principal

O: 415.268.2231

bbram@tricommercial.com

DRE #00639738

TRI Commercial/CORFAC International

71 Stevenson Street, Suite 1450, San Francisco, CA 94105

415.268.2200 | tricommercial.com

