



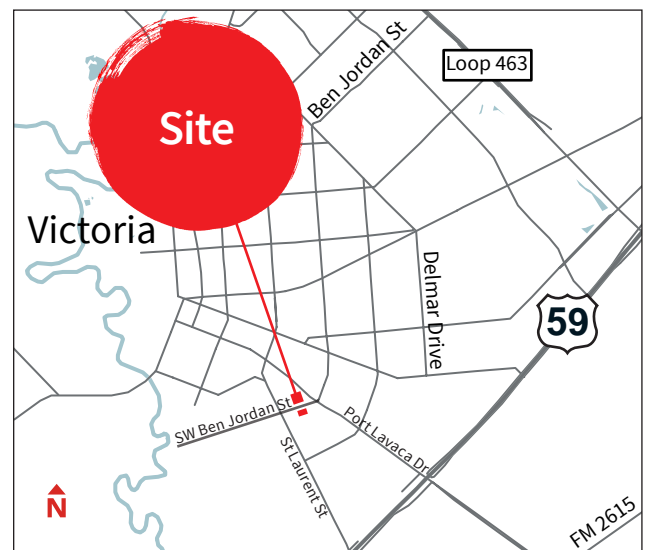
For Sale

Site features:

- Total land: ±4.228 acres
- 2208 SW Ben Jordan St
 - Building: ±2,349 (97,9' x 24') s.f. metal warehouse
 - Office: ±300 s.f.
 - Land area: ±3.65 acres
 - Dock high loading
 - Fully fenced stabilized yard
 - Uses: Any use that requires outside storage
- 2209 SW Ben Jordan St
 - Building: ±4,347 s.f. office
 - Land area: ±0.578 acres
 - Offices: 11 privates, 1 conference room, kitchen/coffee bar and reception area
 - Covered parking/storage area: ±2,037 s.f.
- Properties can be sold separately
- Sale price: contact broker

±6,696 s.f. on ±4.228 acres of land

**2208 & 2209 SW Ben Jordan Street
Victoria, TX 77901**



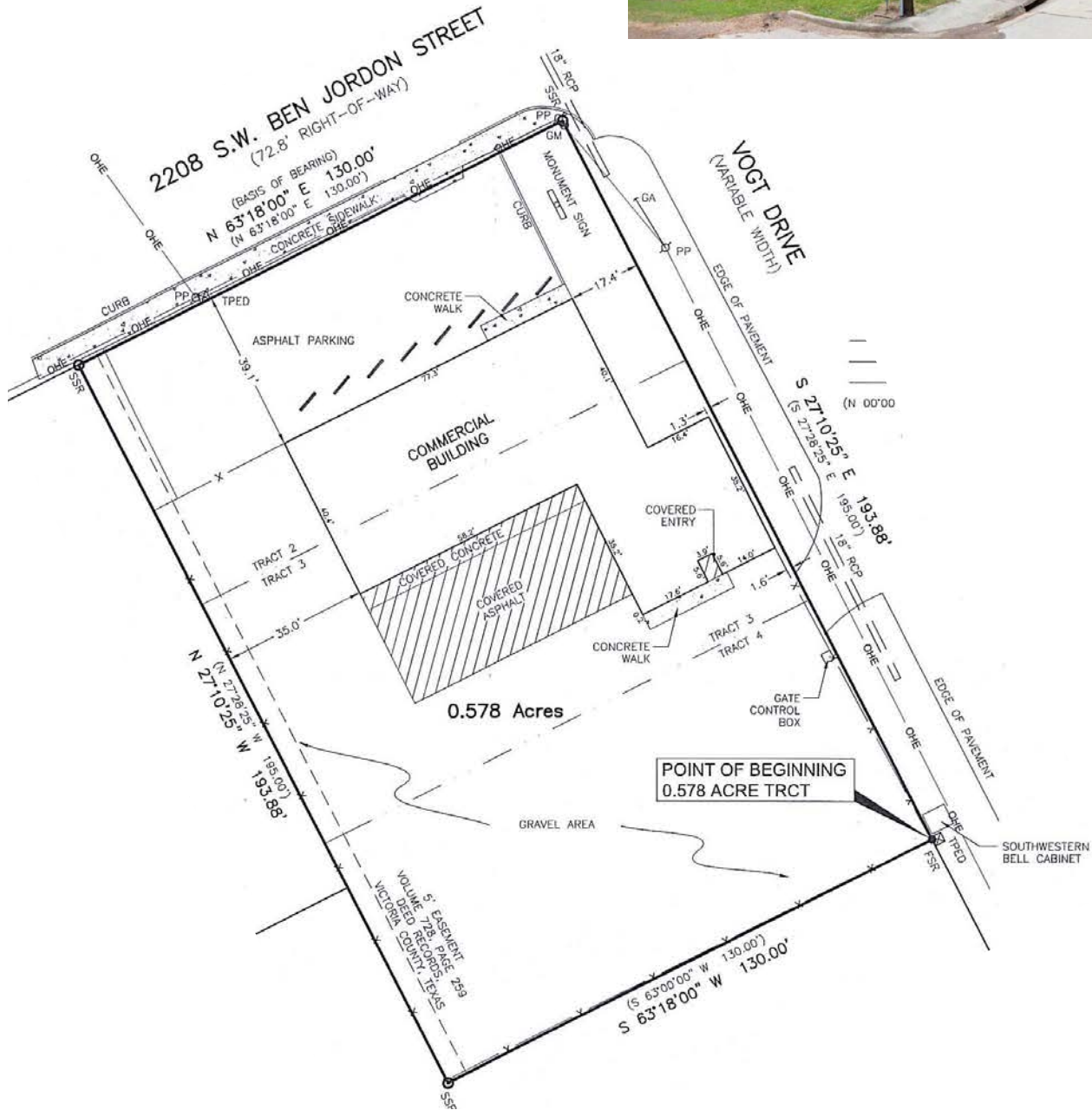
Mark Nicholas, SIOR
+1 713 888 4024
mark.nicholas@am.jll.com



For Sale

±6,696 s.f. on ±4.228 acres of land
2208 & 2209 SW Ben Jordan Street | Victoria, TX 77901

2208 SW Ben Jordan Survey



The information contained herein is obtained from sources believed to be reliable; however, JLL makes no guarantees, warranties or representations as to the completeness or accuracy thereof. The presentation of this property is submitted subject to errors, omissions, change of price or conditions, and is subject to prior sale, lease or withdrawal without notice.



For Sale

±6,696 s.f. on ±4.228 acres of land
2208 & 2209 SW Ben Jordan Street | Victoria, TX 77901

2209 SW Ben Jordan Survey



The information contained herein is obtained from sources believed to be reliable; however, JLL makes no guarantees, warranties or representations as to the completeness or accuracy thereof. The presentation of this property is submitted subject to errors, omissions, change of price or conditions, and is subject to prior sale, lease or withdrawal without notice.

