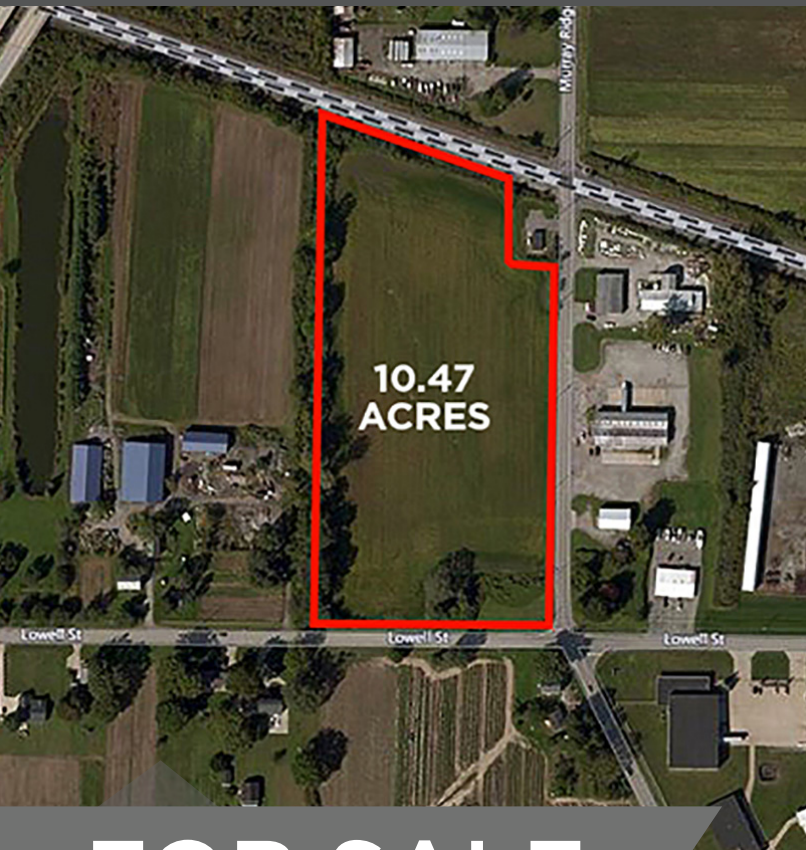


MURRAY RIDGE ROAD

SCHILLING DRIVE



FOR SALE

Murray Ridge Road
Schilling Drive
Elyria, Ohio 44035

BUILD FOR GROWTH. POSITION FOR SUCCESS.

- Two industrial land sites in Elyria
- Murray Ridge Road totals 10.47 acres with 516' of frontage along Lowell Street
- Schilling Drive totals 20 acres with 792' of frontage along Lowell Street
- Both sites zoned L-1 light industrial
- Great access to both I-90 and I-80 (the Ohio Turnpike)

GEORGE J. POFOK, SIOR • Senior Vice President
216.525.1469 • gpofok@crecorealestate.com

SIMON CAPLAN, SIOR • Principal
216.525.1472 • scaplan@crecorealestate.com

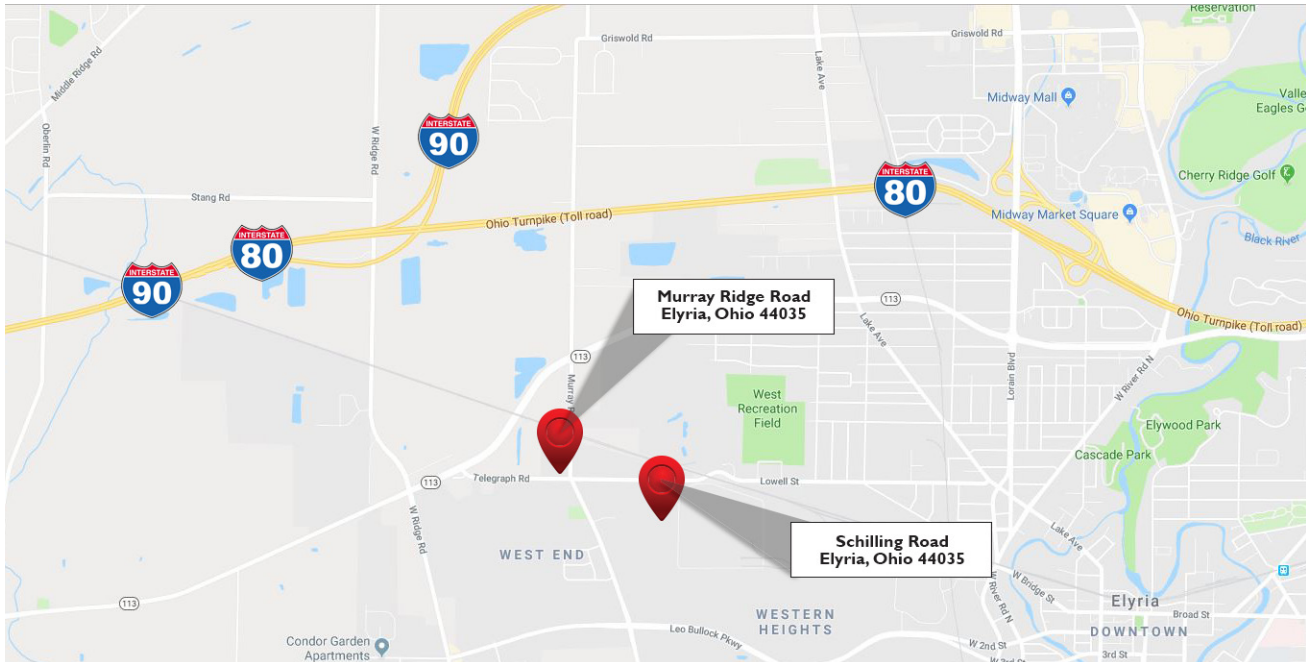
**CUSHMAN &
WAKEFIELD**

CRESCO
Real Estate

FOR SALE

Murray Ridge Road
Schilling Drive
Elyria, Ohio 44035

MAP AND DEMOGRAPHICS



DEMOGRAPHICS

Population	2019	2024 Projection
3 Miles	34,015	34,454
5 Miles	104,408	105,663
Households	2019	2024 Projection
3 Miles	13,966	14,160
5 Miles	42,424	42,932
Total Housing Units	Owner	Renter
3 Miles	57.25%	42.75%
5 Miles	65.07%	34.93%
Income	Median	Average
3 Miles	\$40,031	\$51,149
5 Miles	\$44,705	\$56,585
Traffic Count	Telegraph & Murray Ridge is 6,815 VPD	

GEORGE J. POFOK, SIOR
Senior Vice President
216.525.1469
gpofok@crescorealestate.com

SIMON CAPLAN, SIOR
Principal
216.525.1472
scaplan@crescorealestate.com



3 Summit Park Drive, Suite 200, Cleveland, Ohio 44131 • 216.520.1200 p
216.520.1828 f • crescorealestate.com

Independently Owned and Operated / A Member of the Cushman & Wakefield Alliance

Cushman & Wakefield Copyright 2018. No warranty or representation, express or implied, is made to the accuracy or completeness of the information contained herein, and same is submitted subject to errors, omissions, change of price, rental or other conditions, withdrawal without notice, and to any special listing conditions imposed by the property owner(s). As applicable, we make no representation as to the condition of the property (or properties) in question.