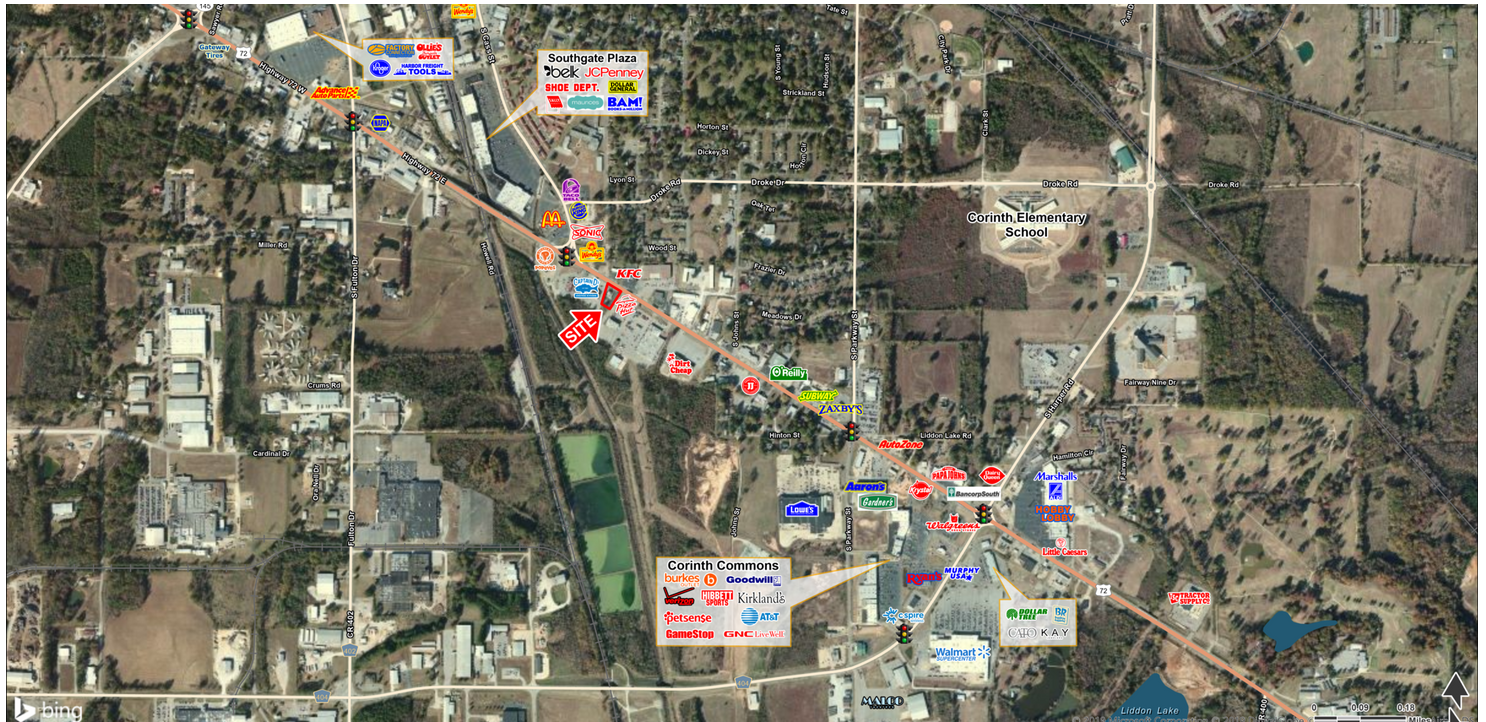


FORMER LONG JOHN SILVER'S

806 Highway 72 E, Corinth, MS 38834

EXECUTIVE SUMMARY



DEMOGRAPHICS

	3 MILES	5 MILES	10 MILES
Population	13,519	21,302	34,607
Daytime Population	20,882	27,187	35,975
Households	5,684	8,739	13,902
Average HH Income	\$49,364	\$52,800	\$54,418

PROPERTY HIGHLIGHTS

- 2,127± SF freestanding building on 0.58 acres For Lease
- Area retailers include Belk, JCPenney, Walmart, Lowe's, Tractor Supply Co., Malco Theater, Hobby Lobby, Burkes Outlet, Dirt Cheap, Aldi, Marshalls, Walgreens, Dollar Tree, AutoZone, Zaxby's, McDonald's, Arby's, Wendy's and more
- Corinth is the county seat for Alcorn County and is located in the northeast region of the state
- Traffic Count: Highway 72 - 30,000 AADT



EXCLUSIVE AGENT(S)

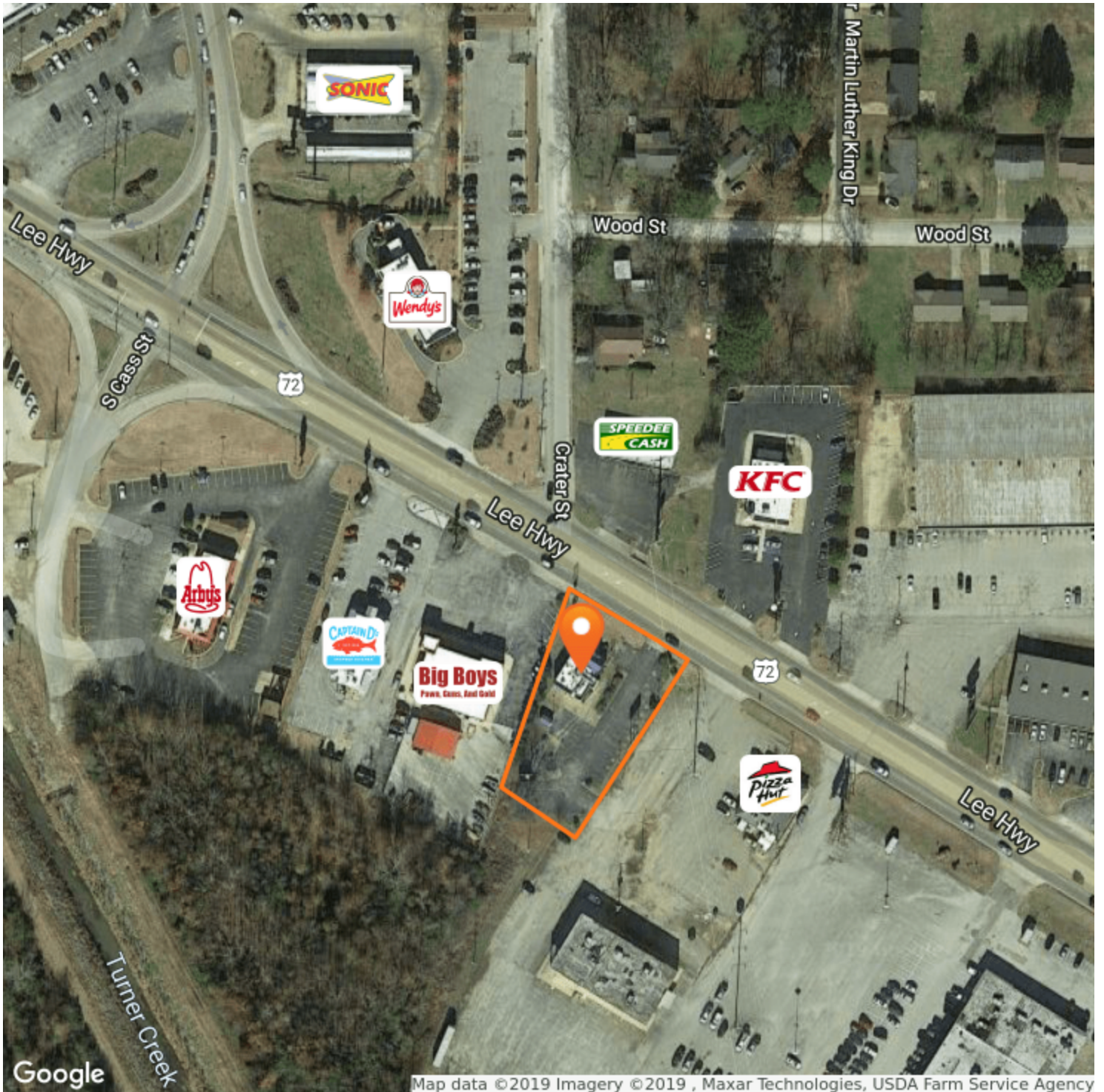
ROBERT SLOAN • robert.sloan@tscg.com • 901.334.5703



FORMER LONG JOHN SILVER'S

806 Highway 72 E, Corinth, MS 38834

RETAILER MAP



EXCLUSIVE AGENT(S)

ROBERT SLOAN • robert.sloan@tscg.com • 901.334.5703