

7061 CORPORATE WAY

Washington Township, OH 45459



Premier Office Space Available
for Sale or Lease

**FOR MORE
INFORMATION
PLEASE
CONTACT**

Sue Zickefoose

Senior Associate

+1 937 461 CBRE (2273)

sue.zickefoose@cbre.com



[@CBRECincinnati](https://twitter.com/CBRECincinnati)

CBRE

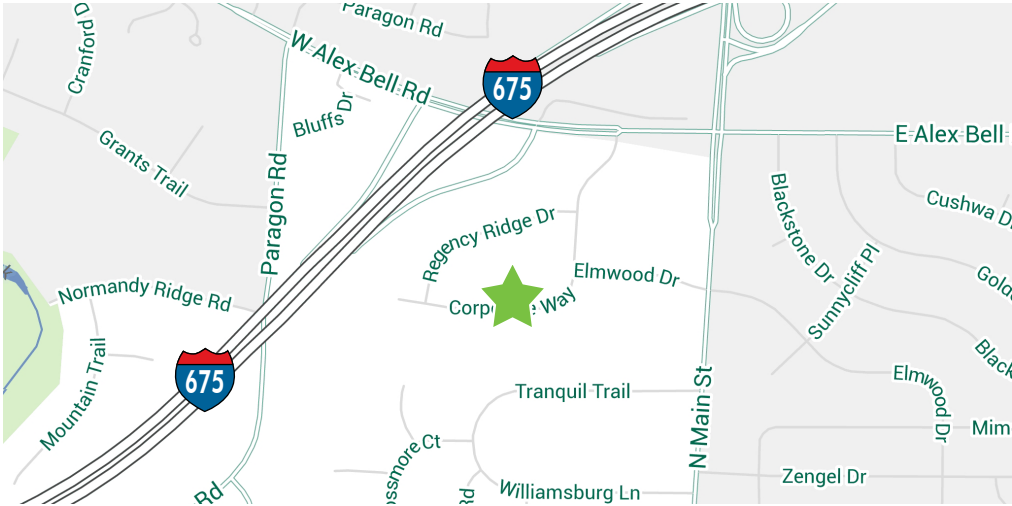
7061 CORPORATE WAY

Washington Township, OH 45459

Premier Office Space Available for Sale or Lease

BUILDING FEATURES

- 319 sq. ft. to 4500 sq. ft. to lease
- 4500 sq. ft. can be split
- 9000 sq. ft. building to purchase
- Exterior Signage
- No city income tax
- Immediate Occupancy
- Ample Parking
- Great access and visibility
- Located within 1/2 mile to SR 48 & I-675
- Proximity to shopping, restaurants, fitness centers, banks and schools
- Below market rates



**FOR MORE
INFORMATION
PLEASE
CONTACT**

Sue Zickefoose

Senior Associate

+1 937 461 CBRE (2273)

sue.zickefoose@cbre.com

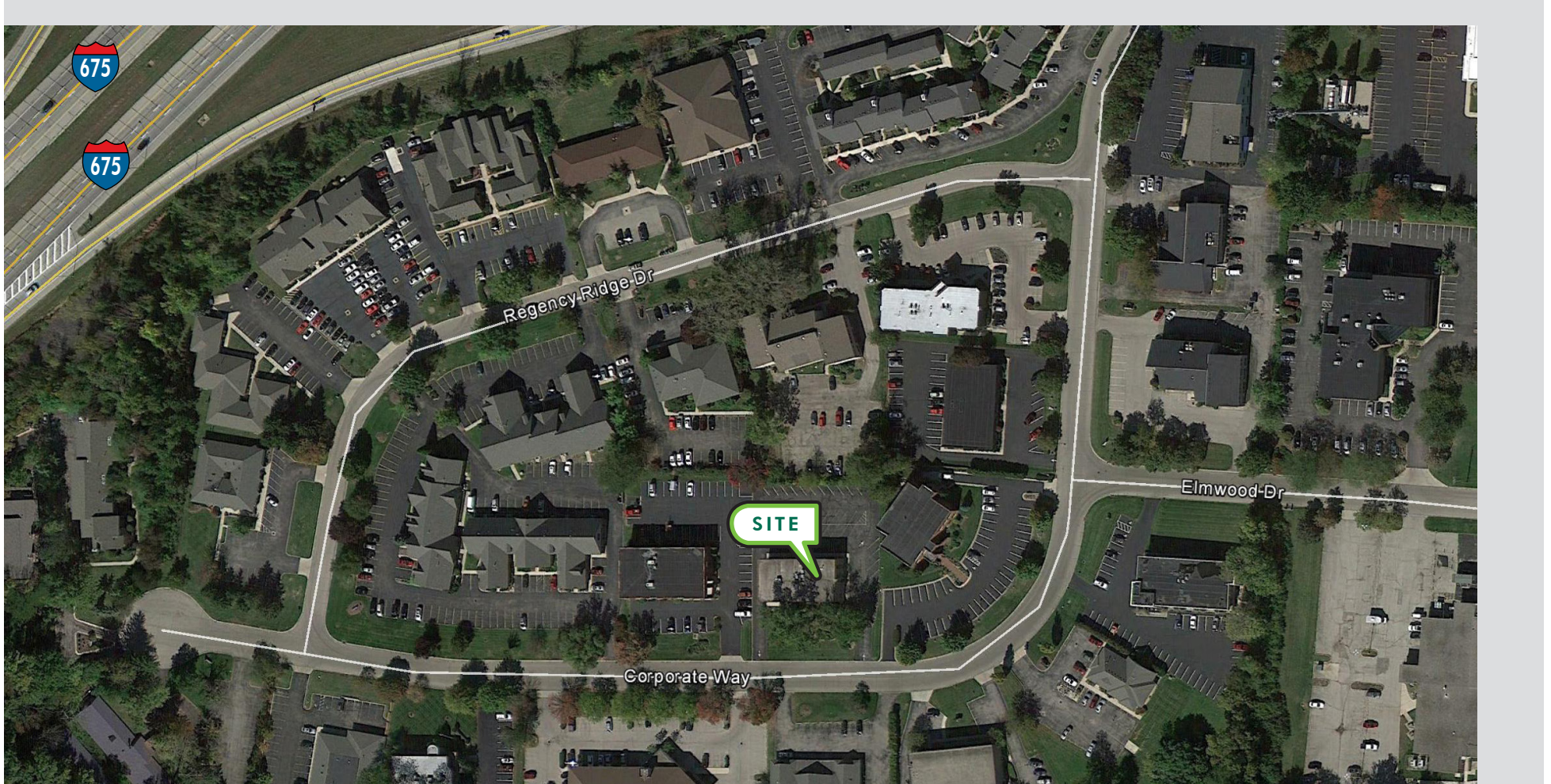
CBRE

7061 CORPORATE WAY

Washington Township, OH 45459

Premier Office Space Available for Sale or Lease

AERIAL



**FOR MORE
INFORMATION
PLEASE
CONTACT**

Sue Zickefoose

Senior Associate

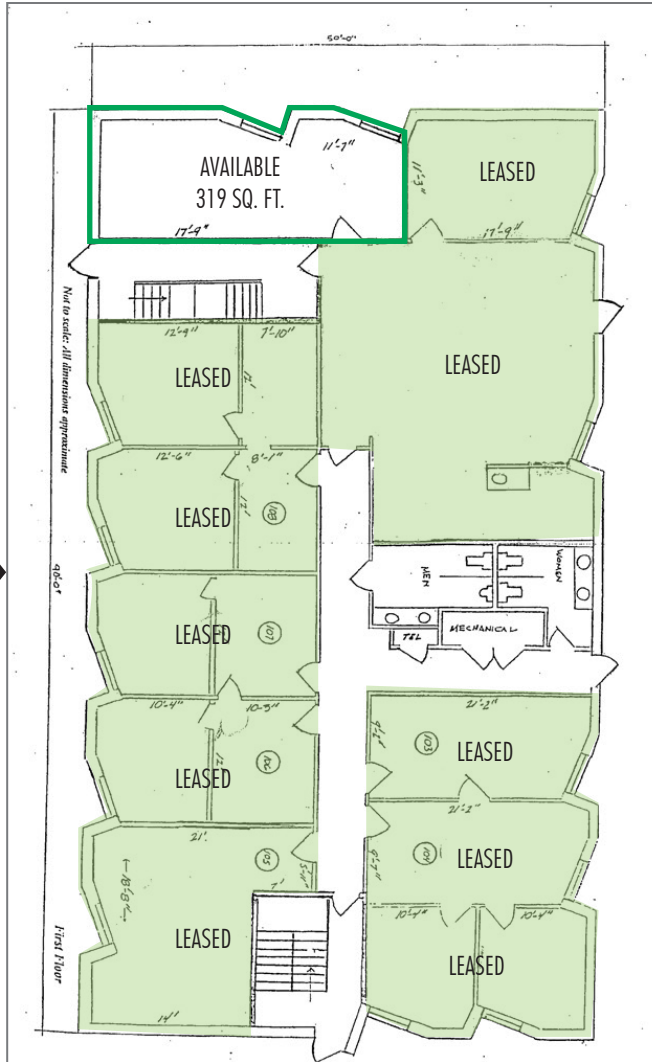
+1 937 461 CBRE (2273)

sue.zickefoose@cbre.com

CBRE

FLOOR PLANS

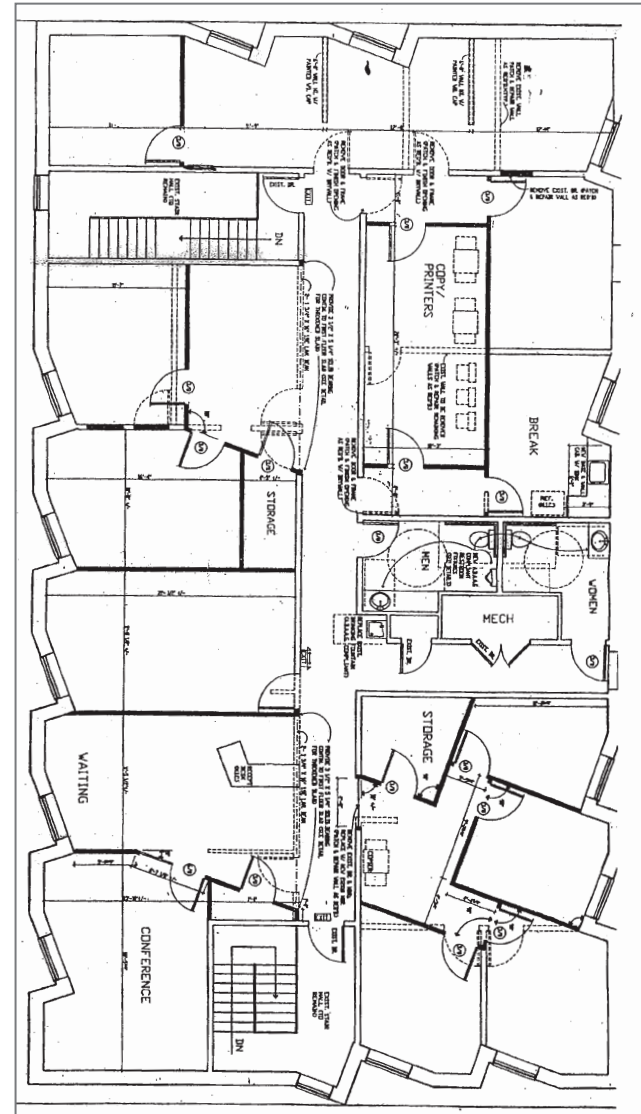
FIRST FLOOR →



FOR MORE INFORMATION PLEASE CONTACT

Sue Zickefoose
Senior Associate
+1 937 461 CBRE (2273)
sue.zickefoose@cbre.com

← SECOND FLOOR



© 2015 CBRE, Inc. This information has been obtained from sources believed reliable. We have not verified it and make no guarantee, warranty or representation about it. Any projections, opinions, assumptions or estimates used are for example only and do not represent the current or future performance of the property. You and your advisors should conduct a careful, independent investigation of the property to determine to your satisfaction the suitability of the property for your needs. CBRE and the CBRE logo are service marks of CBRE, Inc. and/or its affiliated or related companies in the United States and other countries. All other marks displayed on this document are the property of their respective owners. Photos herein are the property of their respective owners and use of these images without the express written consent of the owner is prohibited.

