

27,300±SF WITH YARD FOR LEASE/SALE 1264 STEALTH STREET, LIVERMORE

LISTING DATA

AVAILABLE SF : 27,300±SF

PROPERTY TYPE : Freestanding office/industrial building with yard

PROPERTY INFORMATION:

- 9,100±SF of first floor office
- 9,100±SF of second floor office
- 9,100±SF warehouse (size can be increased, see attached plan)
- Three grade level doors
- 20' clear height
- Power: 1,000 amps, 480 v, 3 phase (Tenant/Buyer to confirm)
- Parking: 55 stalls and on street
- Rear yard area: approximately 0.4 acres
- Lot size: 1.2± acres
- Elevator



ECONOMIC DATA

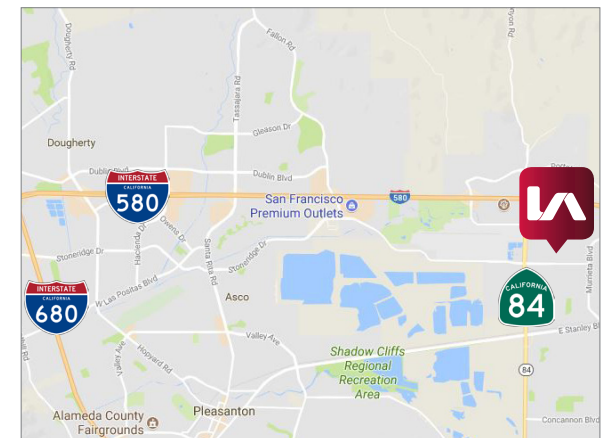
LEASE RATE: \$1.15/SF/month Industrial Gross

SALE PRICE: \$5,200,000.00 (\$190.48/SF)

Sean Offers, SIOR
soffers@lee-associates.com
D 925.737.4159

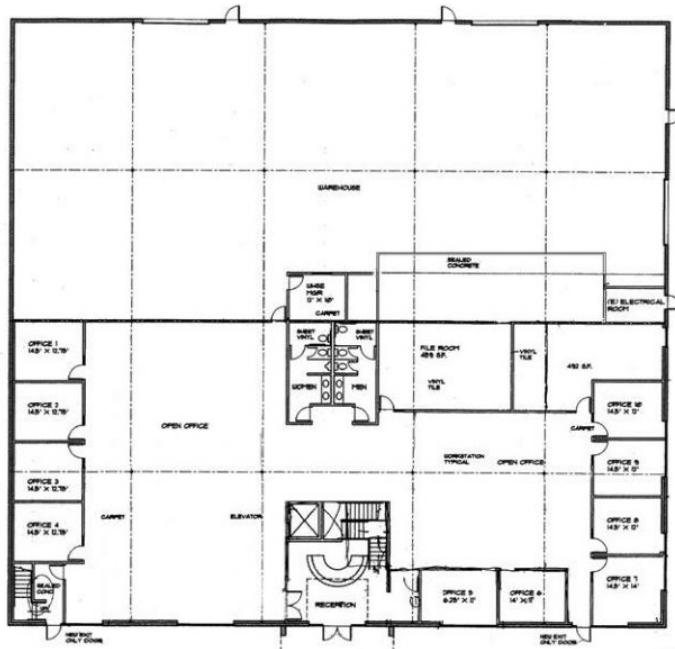
Hunter Steffien
hsteffien@lee-associates.com
D 925.737.4154

All information furnished regarding property for sale, rental or financing is from sources deemed reliable, but no warranty or representation is made to the accuracy thereof and same is submitted to errors, omissions, change of price, rental or other conditions prior to sale, lease or financing or withdrawal without notice. No liability of any kind is to be imposed on the broker herein.

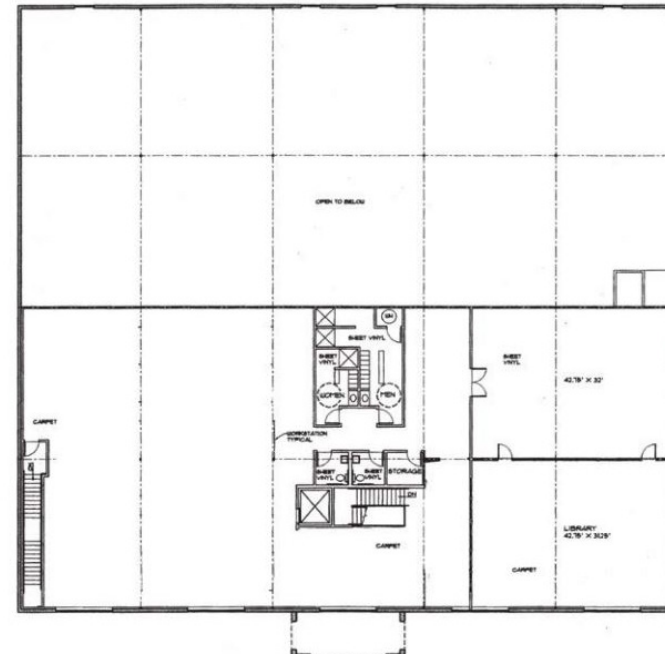


27,300±SF WITH YARD FOR LEASE/SALE
1264 STEALTH STREET, LIVERMORE

Ground Floor



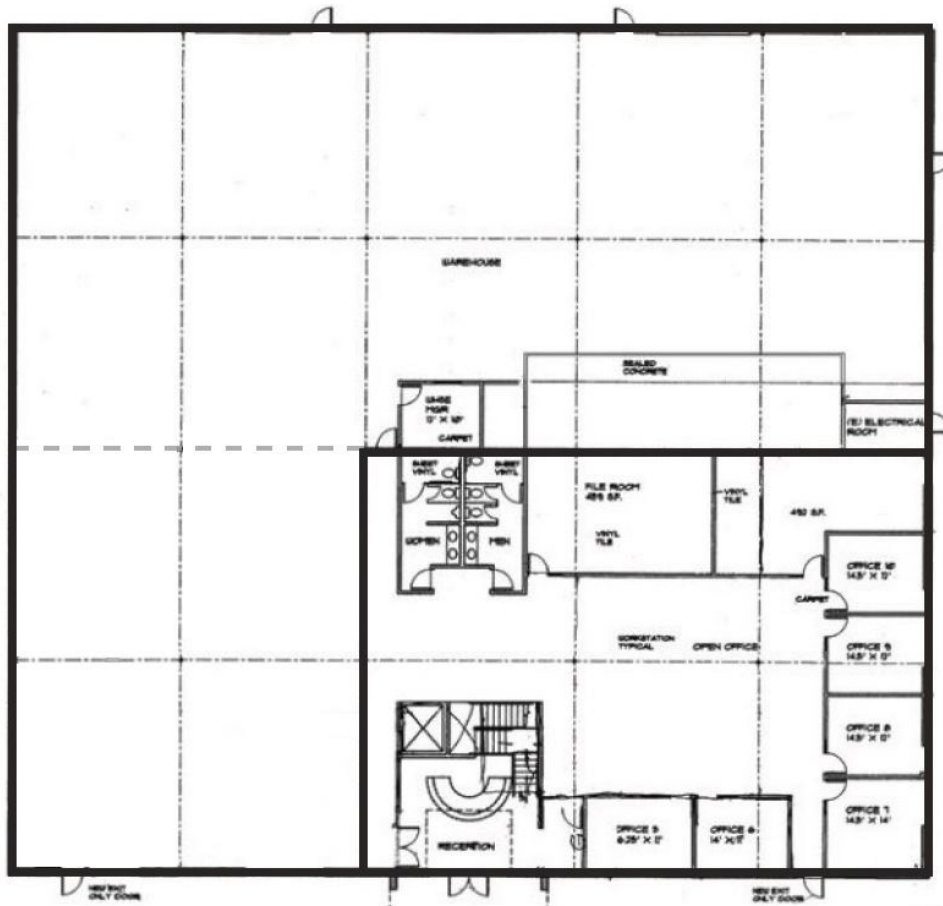
Second Floor



POTENTIAL DEMO 1264 STEALTH STREET, LIVERMORE

Total office: 10,920±SF | Total warehouse: 12,740±SF | Total: Approximately 23,660±SF

Ground Floor



Second Floor

