



Horizon Corporate Center

1288 Route 73 South | Mount Laurel, NJ

Property Description

Located along Route 73 in Mount Laurel just minutes from I-295 & NJ Turnpike, the PMC Building is a Full-Service Class A Office building with suites available from 1,012± SF. There is abundant parking in three large parking lots. Ownership, building administrator and maintenance staff are all on site to assist when questions or concerns arise. Several retail establishments, restaurants, and hotels surround the Horizon Business Campus adding to its convenience.

Current Availability

Suite 201	2,705± SF
Suite 220	1,954± SF
Suite 230	1,012± SF



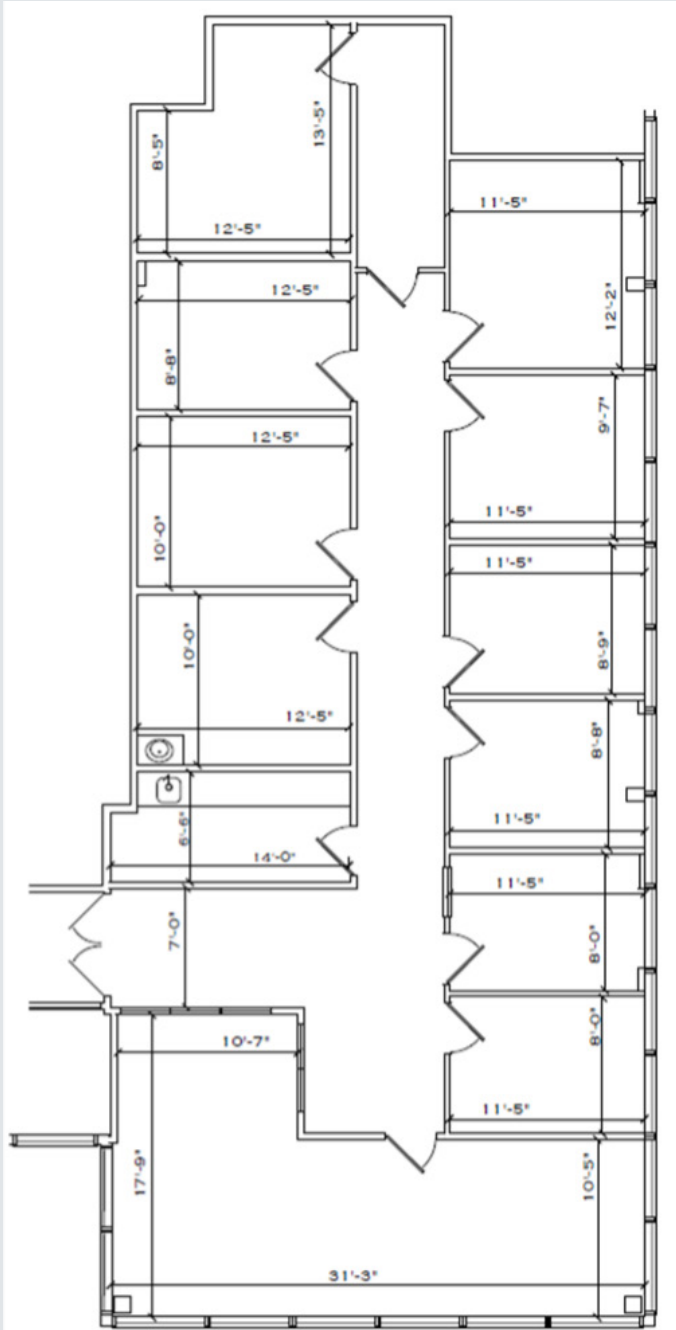
For more information:

Julie Kronfeld

+856 802 6516 • julie.kronfeld@naimertz.com

Rebecca Ting, SIOR

+856 234 9600 • rebecca.ting@naimertz.com



Suite 201

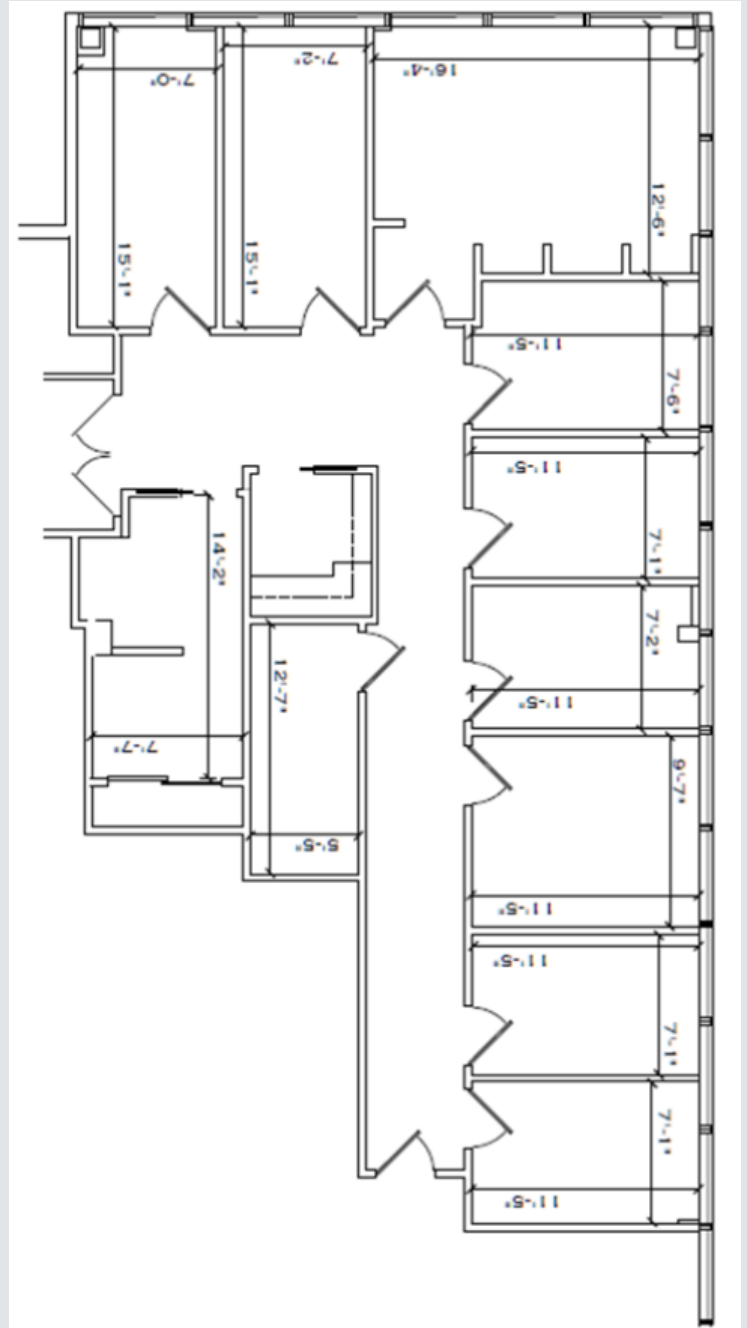
2,705± SF



NO WARRANTY OR REPRESENTATION, EXPRESS OR IMPLIED, IS MADE AS TO THE ACCURACY OF THE INFORMATION CONTAINED HEREIN, AND THE SAME IS SUBMITTED SUBJECT TO ERRORS, OMISSIONS, CHANGE OF PRICE, RENTAL OR OTHER CONDITIONS, PRIOR SALE, LEASE OR FINANCING, OR WITHDRAWAL WITHOUT NOTICE, AND OF ANY SPECIAL LISTING CONDITIONS IMPOSED BY OUR PRINCIPALS NO WARRANTIES OR REPRESENTATIONS ARE MADE AS TO THE CONDITION OF THE PROPERTY OR ANY HAZARDS CONTAINED THEREIN ARE ANY TO BE IMPLIED.

21 Roland Avenue
 Mount Laurel NJ 08054
 +1 856 234 9600
naimertz.com

Class A Office



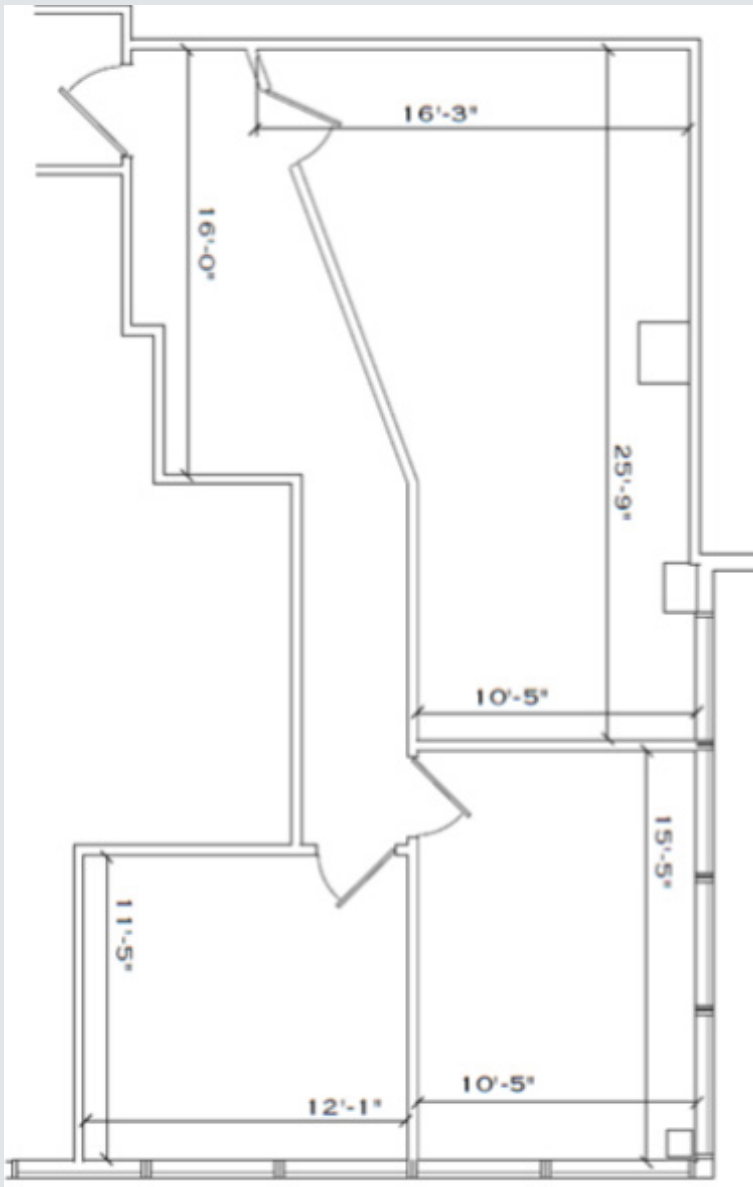
Suite 220

1,954± SF

NO WARRANTY OR REPRESENTATION, EXPRESS OR IMPLIED, IS MADE AS TO THE ACCURACY OF THE INFORMATION CONTAINED HEREIN, AND THE SAME IS SUBMITTED SUBJECT TO ERRORS, OMISSIONS, CHANGE OF PRICE, RENTAL OR OTHER CONDITIONS, PRIOR SALE, LEASE OR FINANCING, OR WITHDRAWAL WITHOUT NOTICE, AND OF ANY SPECIAL LISTING CONDITIONS IMPOSED BY OUR PRINCIPALS NO WARRANTIES OR REPRESENTATIONS ARE MADE AS TO THE CONDITION OF THE PROPERTY OR ANY HAZARDS CONTAINED THEREIN ARE ANY TO BE IMPLIED.

21 Roland Avenue
 Mount Laurel NJ 08054
 +1 856 234 9600
naimertz.com

Class A Office



Suite 230

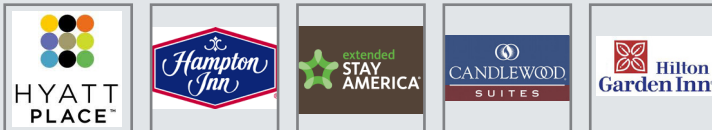
1,012± SF





The Horizon Corporate Center has numerous amenities in its immediate area including:

Lodging



Shopping & Services



Dining



+ MORE

Distance to Other Nearby Amenities:

Moorestown Mall	3.0 mi
The Promenade at Sagamore	3.7 mi
Cherry Hill Mall	5.5 mi
Centreton Square	6.0 mi
Center City Philadelphia	14.0 mi
Philadelphia Airport	25.0 mi
Atlantic City Airport	45.0 mi

NO WARRANTY OR REPRESENTATION, EXPRESS OR IMPLIED, IS MADE AS TO THE ACCURACY OF THE INFORMATION CONTAINED HEREIN, AND THE SAME IS SUBMITTED SUBJECT TO ERRORS, OMISSIONS, CHANGE OF PRICE, RENTAL OR OTHER CONDITIONS, PRIOR SALE, LEASE OR FINANCING, OR WITHDRAWAL WITHOUT NOTICE, AND OF ANY SPECIAL LISTING CONDITIONS IMPOSED BY OUR PRINCIPALS NO WARRANTIES OR REPRESENTATIONS ARE MADE AS TO THE CONDITION OF THE PROPERTY OR ANY HAZARDS CONTAINED THEREIN ARE ANY TO BE IMPLIED.