

# FOR SALE OR LEASE

# MS PRIME SIX

# BUSINESS PARK

DEVELOPED BY: SILAGI DEVELOPMENT  
& MANAGEMENT, INC. // 1.805.402.4515



**CONSTRUCTION COMMENCING APRIL 2020**



**VAN BUREN BLVD. & ECONOMIC DR., RIVERSIDE, CA**  
**5 Industrial/Showroom Buildings Totaling ±91,987 SF**



**Van Buren Blvd**

**Economic Dr**

**Please Contact:**

**WWW.SILAGISOCAL.COM**



**R. MARIO CALVILLO**  
DRE#: 01911573 // 951.276.3657  
MCALVILLO@LEERIVERSIDE.COM

*No warranty or representation has been made to the accuracy of the foregoing information. Terms of sale or lease and availability are subject to change or withdrawal without notice. Lee & Associates Commercial Real Estate Services, Inc. - Riverside. 3240 Mission Inn Avenue, Riverside, CA 92507 | Corporate DRE#: 01048055*

# FOR SALE OR LEASE

# MS PRIME SIX

# BUSINESS PARK

DEVELOPED BY: SILAGI DEVELOPMENT & MANAGEMENT, INC. // 1.805.402.4515



Van Buren Blvd

BULD. #	SF	SITE PLAN	FLOOR/OFFICE PLAN	STATUS
1	15,115	<a href="#">View</a>	<a href="#">View</a>	Available
2	18,594	<a href="#">View</a>	<a href="#">View</a>	Available
3	19,931	<a href="#">View</a>	<a href="#">View</a>	Available
4	22,036		In Escrow	
5	16,311	<a href="#">View</a>	<a href="#">View</a>	Available



Please Contact:

[WWW.SILAGISOCAL.COM](http://WWW.SILAGISOCAL.COM)



**R. MARIO CALVILLO**  
 DRE#: 01911573 // 951.276.3657  
[MCALVILLO@LEERIVERSIDE.COM](mailto:MCALVILLO@LEERIVERSIDE.COM)

*No warranty or representation has been made to the accuracy of the foregoing information. Terms of sale or lease and availability are subject to change or withdrawal without notice. Lee & Associates Commercial Real Estate Services, Inc. - Riverside. 3240 Mission Inn Avenue, Riverside, CA 92507 | Corporate DRE#: 01048055*

# FOR SALE OR LEASE

# MS PRIME SIX

# BUSINESS PARK

DEVELOPED BY: SILAGI DEVELOPMENT  
& MANAGEMENT, INC. // 1.805.402.4515



BUILDING #	1	2	3	4	5
Van Buren Blvd	21550	21650	21750	21700	21600
Total Building SF	15,115	18,594	19,931	22,036	16,311
Acres	1.62	1.18	1.34	IN ESCROW	1.42
Auto Parking	25	25	27		24
Zoning	MU/BE	MU	MU		MU
Clear Height	24'	24'	26'		24'
Power (AMPS) - 277/480 Volt (Expandable)	400	400	400		800
GL Doors (12'x14')	1 Per Unit	1 Per Unit	1 Per Unit	1 Per Unit	1 Per Unit
DH Doors (9'x10')	3 Per Unit	3 Per Unit	3 Per Unit	3 Per Unit	3 Per Unit
ESFR Sprinkler	Yes	Yes	Yes	Yes	Yes
Secured Yard	Yes	Yes	Yes	Yes	Yes

Please Contact:

[WWW.SILAGISOCAL.COM](http://WWW.SILAGISOCAL.COM)



**R. MARIO CALVILLO**  
DRE#: 01911573 // 951.276.3657  
MCALVILLO@LEERIVERSIDE.COM

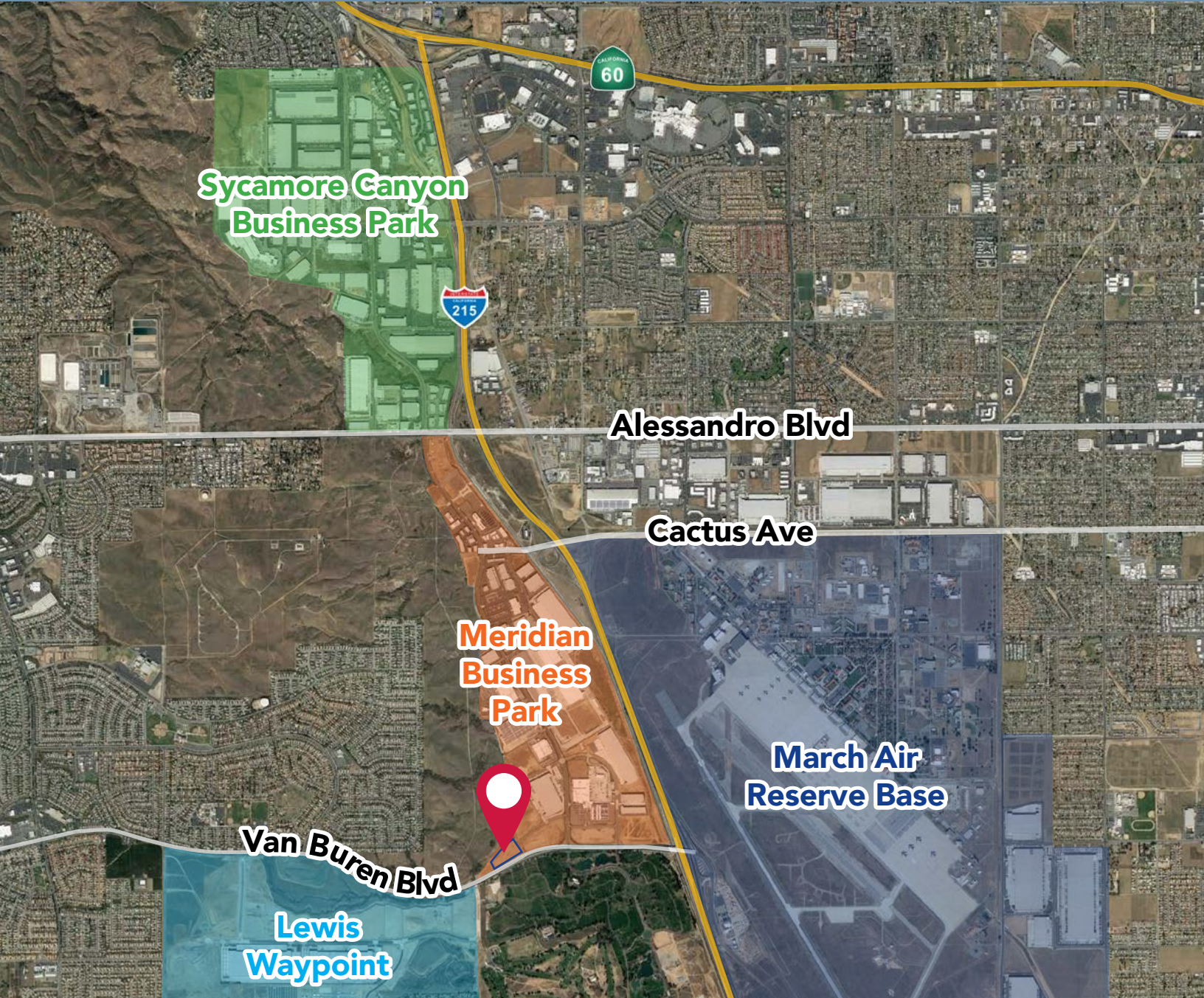
*No warranty or representation has been made to the accuracy of the foregoing information. Terms of sale or lease and availability are subject to change or withdrawal without notice. Lee & Associates Commercial Real Estate Services, Inc. - Riverside. 3240 Mission Inn Avenue, Riverside, CA 92507 | Corporate DRE#: 01048055*

# FOR SALE OR LEASE

# MS PRIME SIX

# BUSINESS PARK

DEVELOPED BY: SILAGI DEVELOPMENT  
& MANAGEMENT, INC. // 1.805.402.4515



Please Contact:

[WWW.SILAGISOCAL.COM](http://WWW.SILAGISOCAL.COM)



R. MARIO CALVILLO  
DRE#: 01911573 // 951.276.3657  
MCALVILLO@LEERIVERSIDE.COM

No warranty or representation has been made to the accuracy of the foregoing information. Terms of sale or lease and availability are subject to change or withdrawal without notice. Lee & Associates Commercial Real Estate Services, Inc. - Riverside. 3240 Mission Inn Avenue, Riverside, CA 92507 | Corporate DRE#: 01048055