



**CUSHMAN &
WAKEFIELD**
Commerce

FOR SALE

TLC Car Wash

11575 South 700 East / Draper, Utah

CAR WASH SITS ON A 0.51 ACRE OF LAND



January 2015-December 2016 2 Year Annual Average

Gross Scheduled Income	\$	119,967
Expenses	\$	(23,320)
Repairs & Maintenance	\$	(20,908)
Supplies	\$	(10,604)
Taxes	\$	(6,400)
Utilities	\$	(8,756)
NET OPERATING INCOME	\$	49,979
Price:	\$	599,000
Terms:	CASH	
CAP Rate:	8.34%	

Travis Healey
Senior Director
+1 801 303 5565
thealey@comre.com

170 South Main Street, Suite 1600
Salt Lake City, UT 84101
Main +1 801 322 2000
Fax +1 801 322 2040
comre.com

Independently Owned and Operated / A Member of the Cushman & Wakefield Alliance

Cushman & Wakefield Copyright 2017. No warranty or representation, express or implied, is made to the accuracy or completeness of the information contained herein, and same is submitted subject to errors, omissions, change of price, rental or other conditions, withdrawal without notice, and to any special listing conditions imposed by the property owner(s). As applicable, we make no representation as to the condition of the property (or properties) in question. (path: G:\1 - Projects\Freeman, T\1 - Flyers\TLCCarWash)



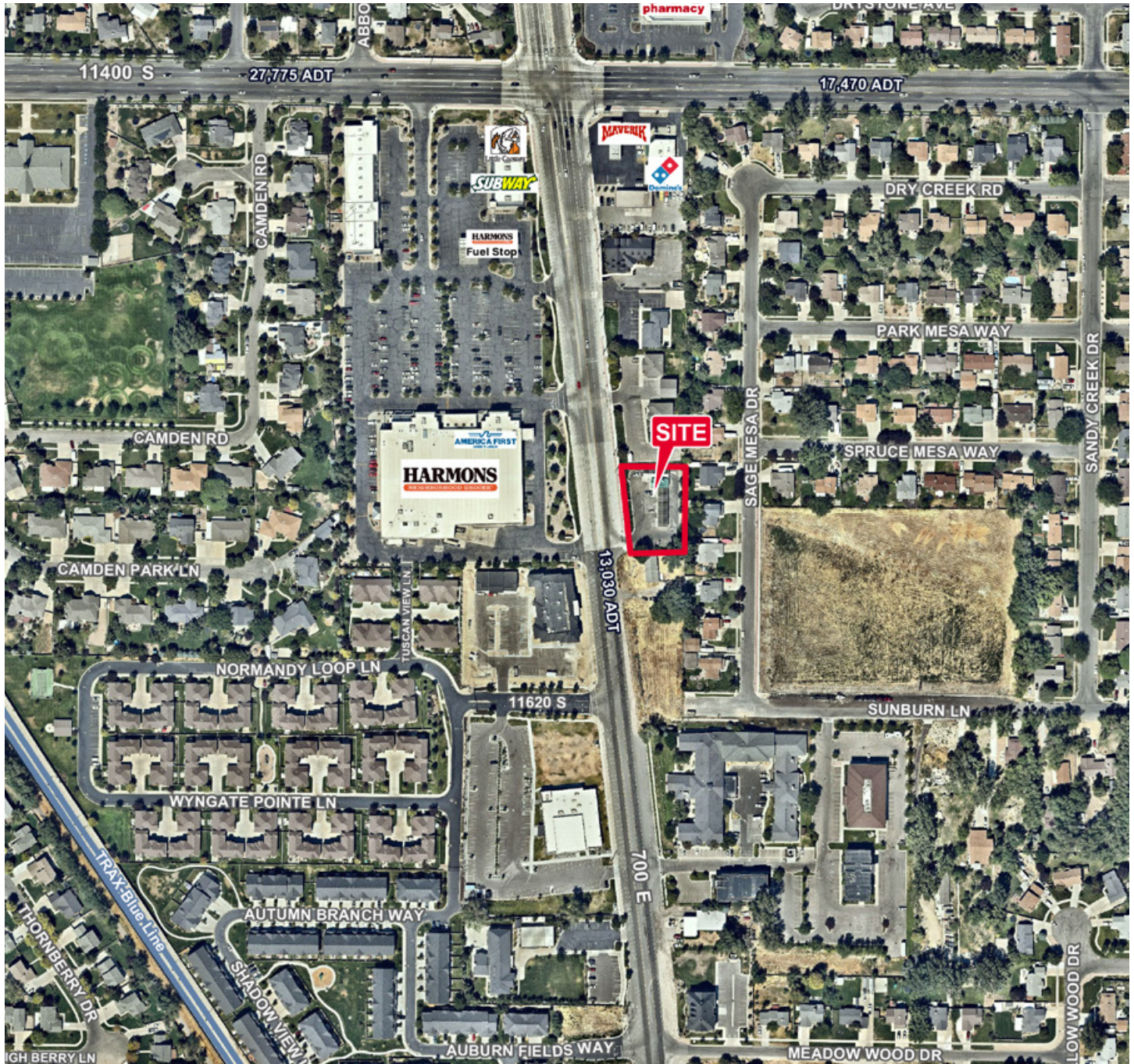
**CUSHMAN &
WAKEFIELD**
Commerce

FOR SALE

TLC Car Wash

11575 South 700 East / Draper, Utah

Aerial / Location Map



Travis Healey
Senior Director
+1 801 303 5565
thealey@comre.com

170 South Main Street, Suite 1600
Salt Lake City, UT 84101
Main +1 801 322 2000
Fax +1 801 322 2040
comre.com

Independently Owned and Operated / A Member of the Cushman & Wakefield Alliance

Cushman & Wakefield Copyright 2017. No warranty or representation, express or implied, is made to the accuracy or completeness of the information contained herein, and same is submitted subject to errors, omissions, change of price, rental or other conditions, withdrawal without notice, and to any special listing conditions imposed by the property owner(s). As applicable, we make no representation as to the condition of the property (or properties) in question. (path: G:\1 - Projects\Freeman, T\1 - Flyers\TLCCarWash)