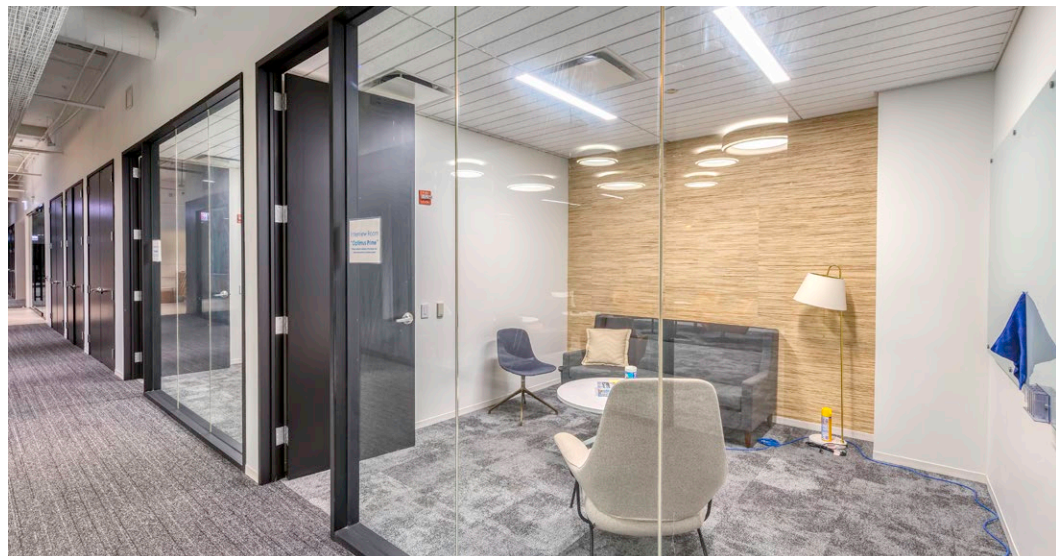
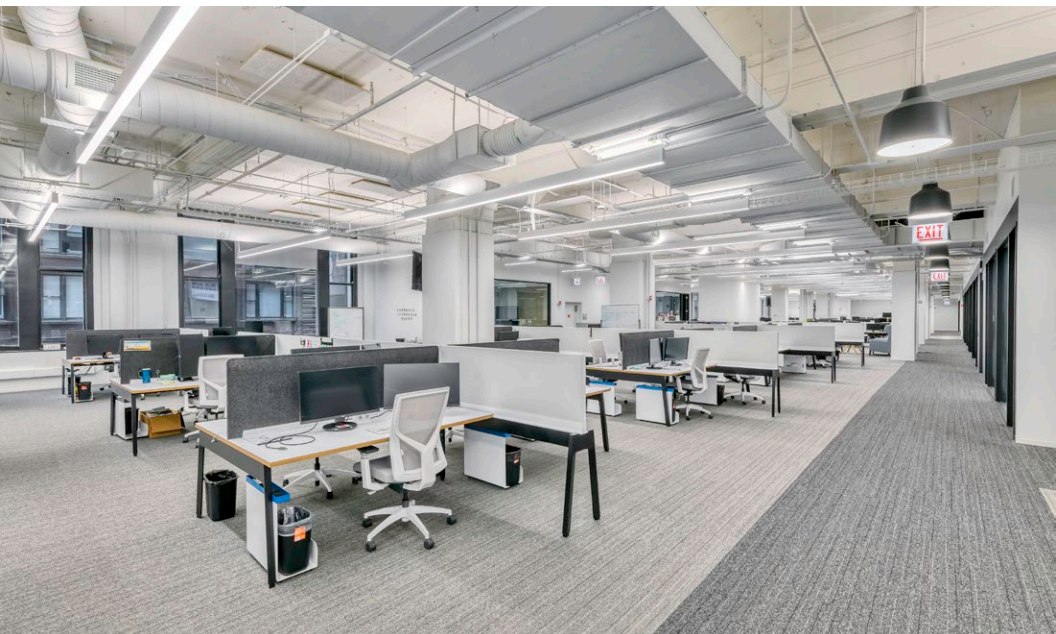
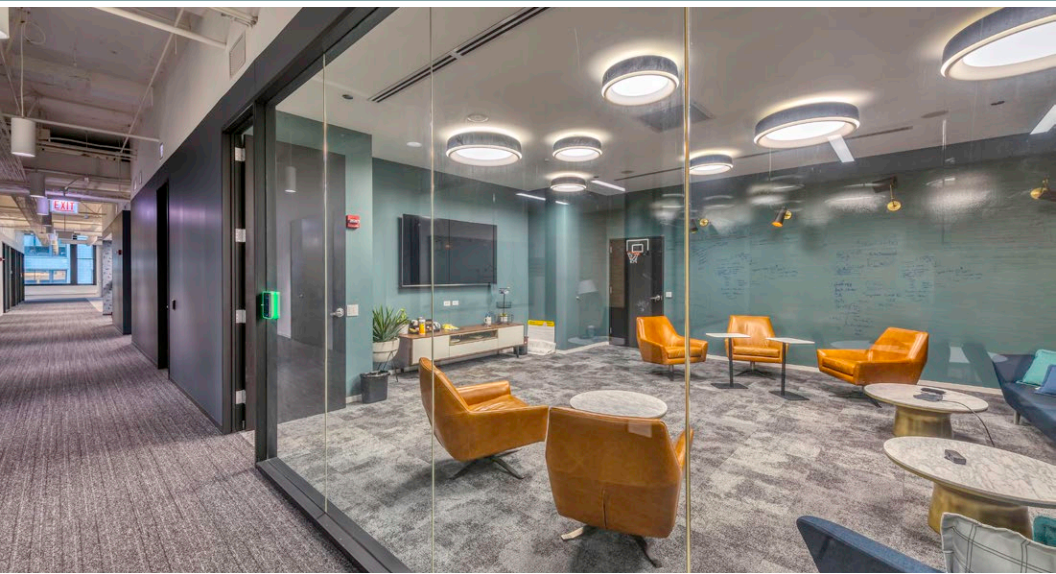


SUBLEASE AVAILABLE

# 1 IN DEARBORN

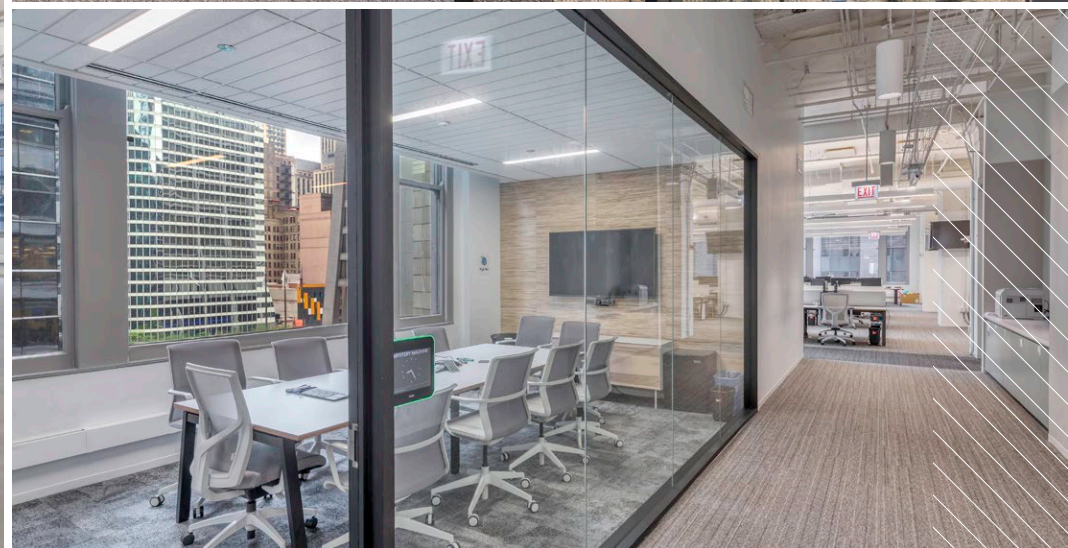
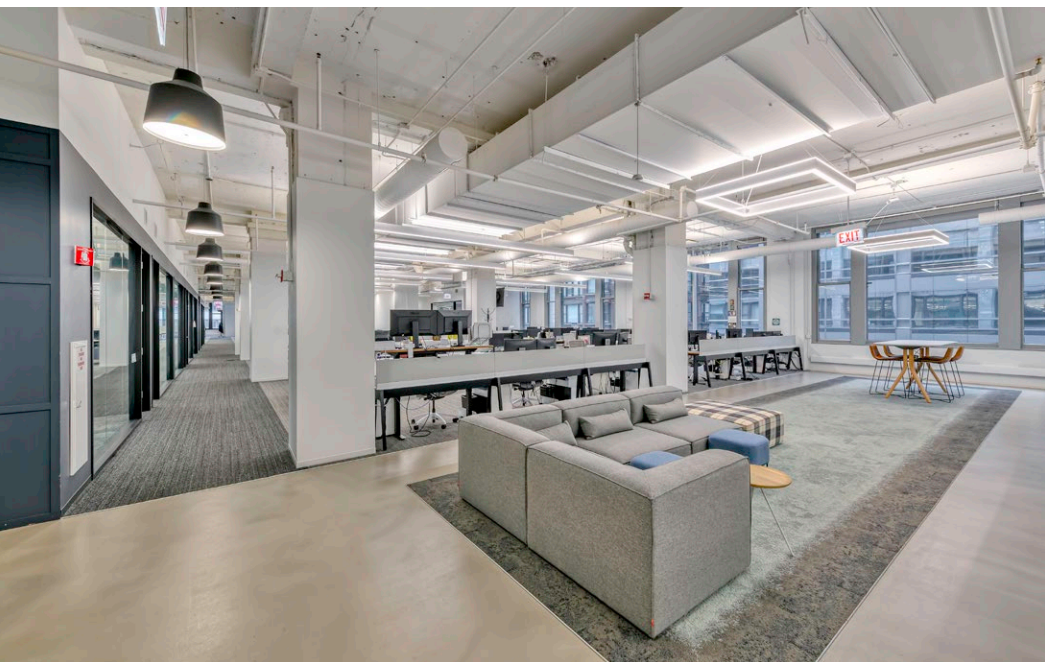
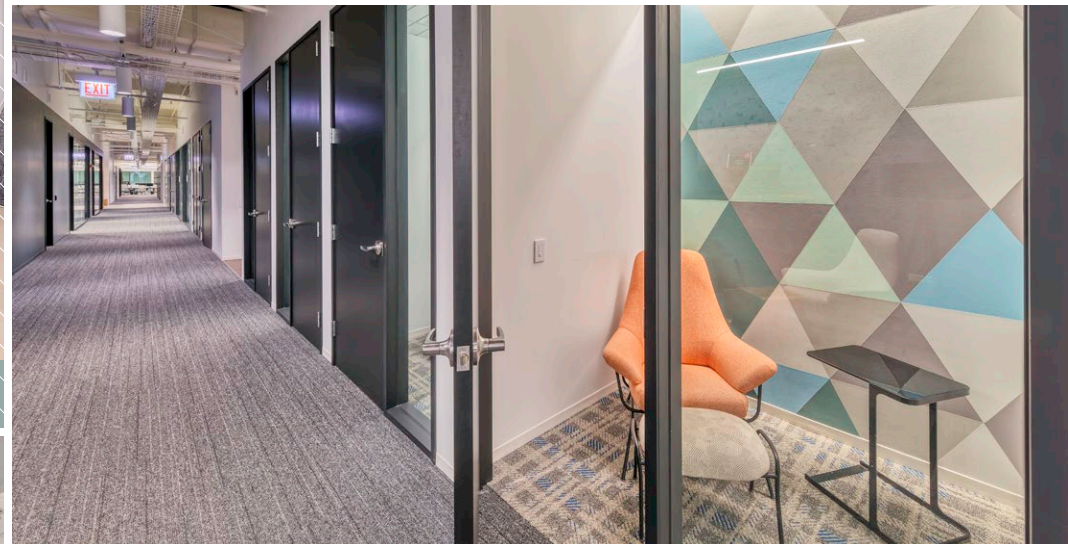
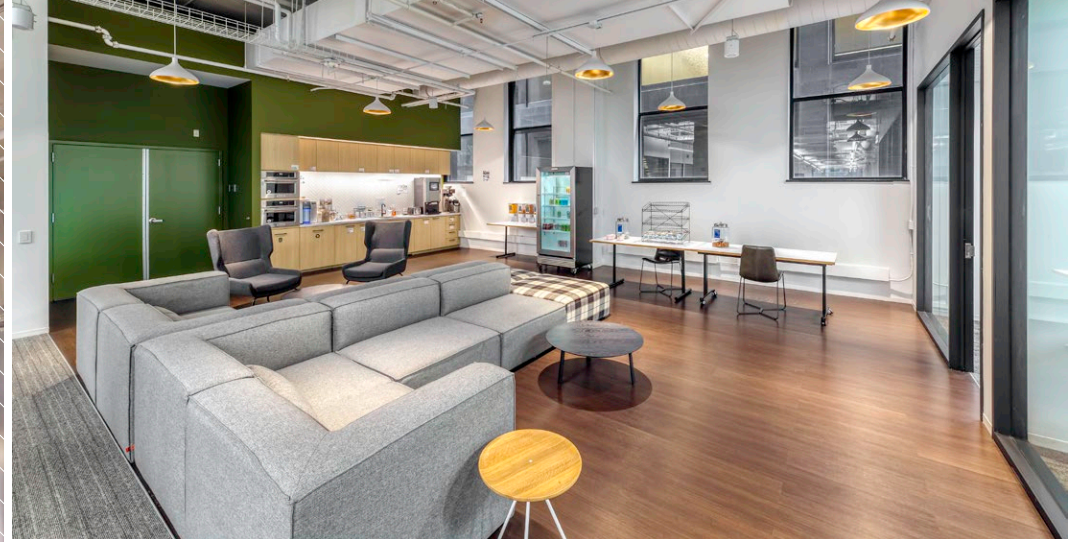
6TH FLOOR – SUITE 600 • 52,165 SF



AVAILABLE NOW • RENT: WITHHELD

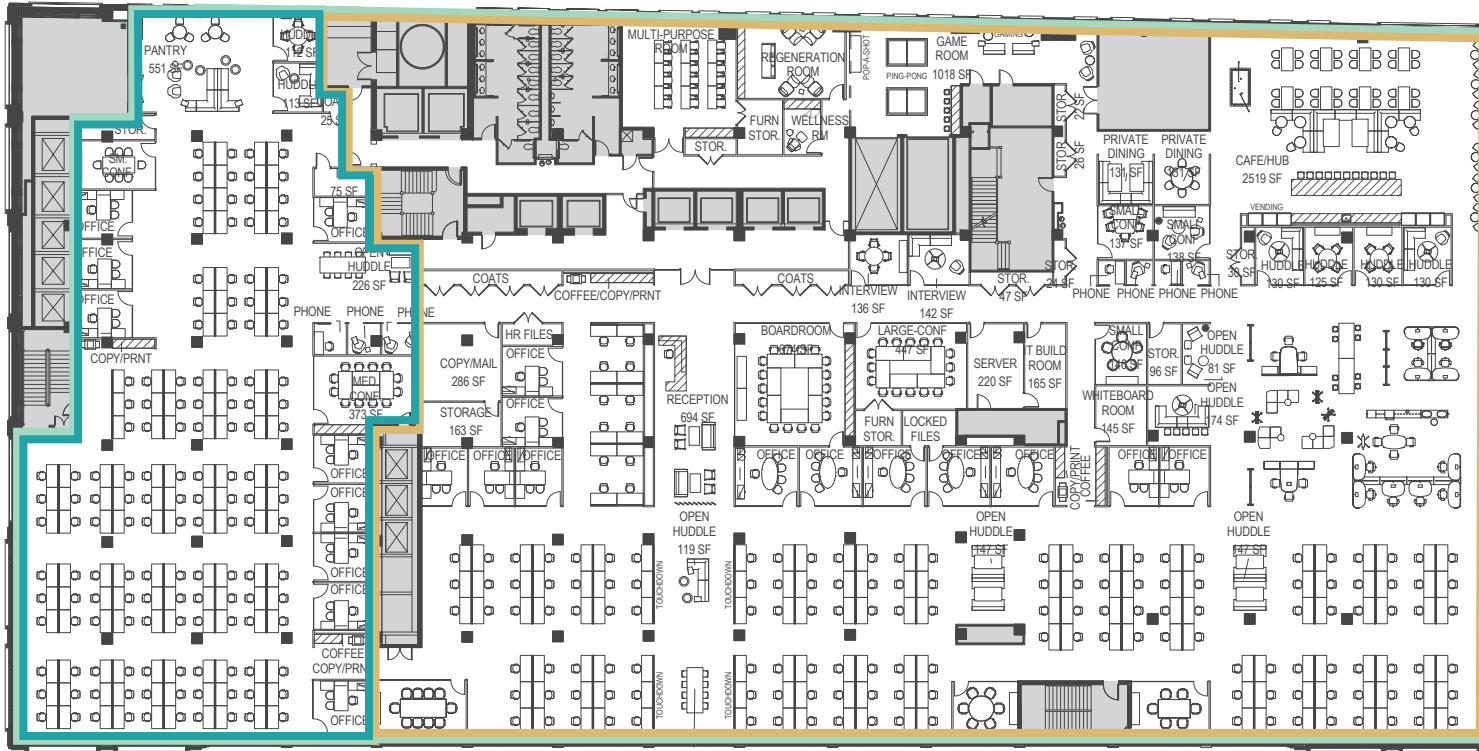
CBRE







# 6TH FLOOR – SUITE 600 • 52,165 SF



## OPTION 1 • 52,165 SF

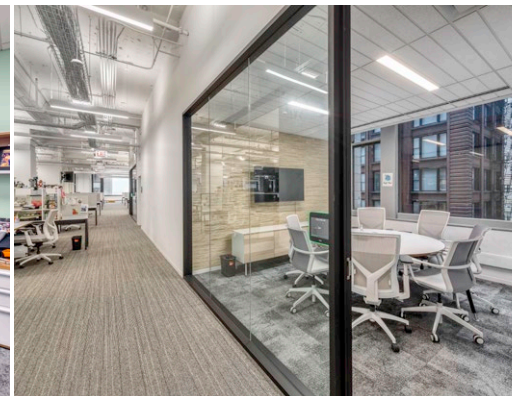
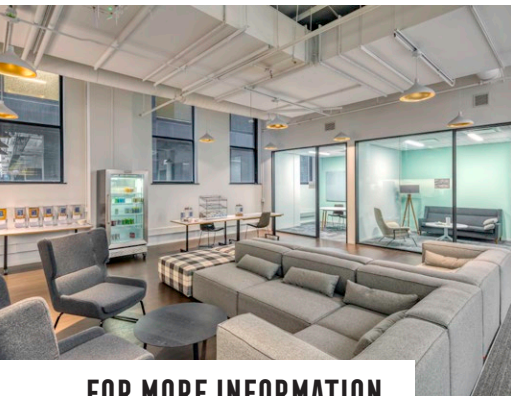
- 295 workstations
- 30 offices
- 13 huddle rooms/spaces
- 1 small conference room (8 seats)
- 1 medium conference room (12 seats)
- 4 small conference rooms (4-6 seats)
- 2 medium conference rooms (6-10 seats)
- 1 large conference room (16 seats)
- 1 boardroom (18 seats)
- 1 reception area

## OPTION 2 • 38,476 SF

- 156 workstations
- 21 offices
- 10 huddle rooms/spaces
- 4 small conference rooms (4-6 seats)
- 2 medium conference rooms (6-10 seats)
- 1 large conference room (16 seats)
- 1 boardroom (18 seats)
- 1 reception area

## OPTION 3 • 13,665 SF

- 139 workstations
- 9 offices
- 3 huddle rooms
- 1 small conference room
- 1 medium conference room



**FOR MORE INFORMATION**

**TYLER REAUMOND**

+1 312 780 1250 | [tyler.reamond@cbre.com](mailto:tyler.reamond@cbre.com)

**TONY COGLIANESE**

+1 312 861 7838 | [tony.coglianese@cbre.com](mailto:tony.coglianese@cbre.com)

**CBRE**

© 2020 CBRE, Inc. All rights reserved. This information has been obtained from sources believed reliable, but has not been verified for accuracy or completeness. You should conduct a careful, independent investigation of the property and verify all information. Any reliance on this information is solely at your own risk. CBRE and the CBRE logo are service marks of CBRE, Inc. All other marks displayed on this document are the property of their respective owners, and the use of such logos does not imply any affiliation with or endorsement of CBRE. Photos herein are the property of their respective owners. Use of these images without the express written consent of the owner is prohibited. PMStudio\_June2020