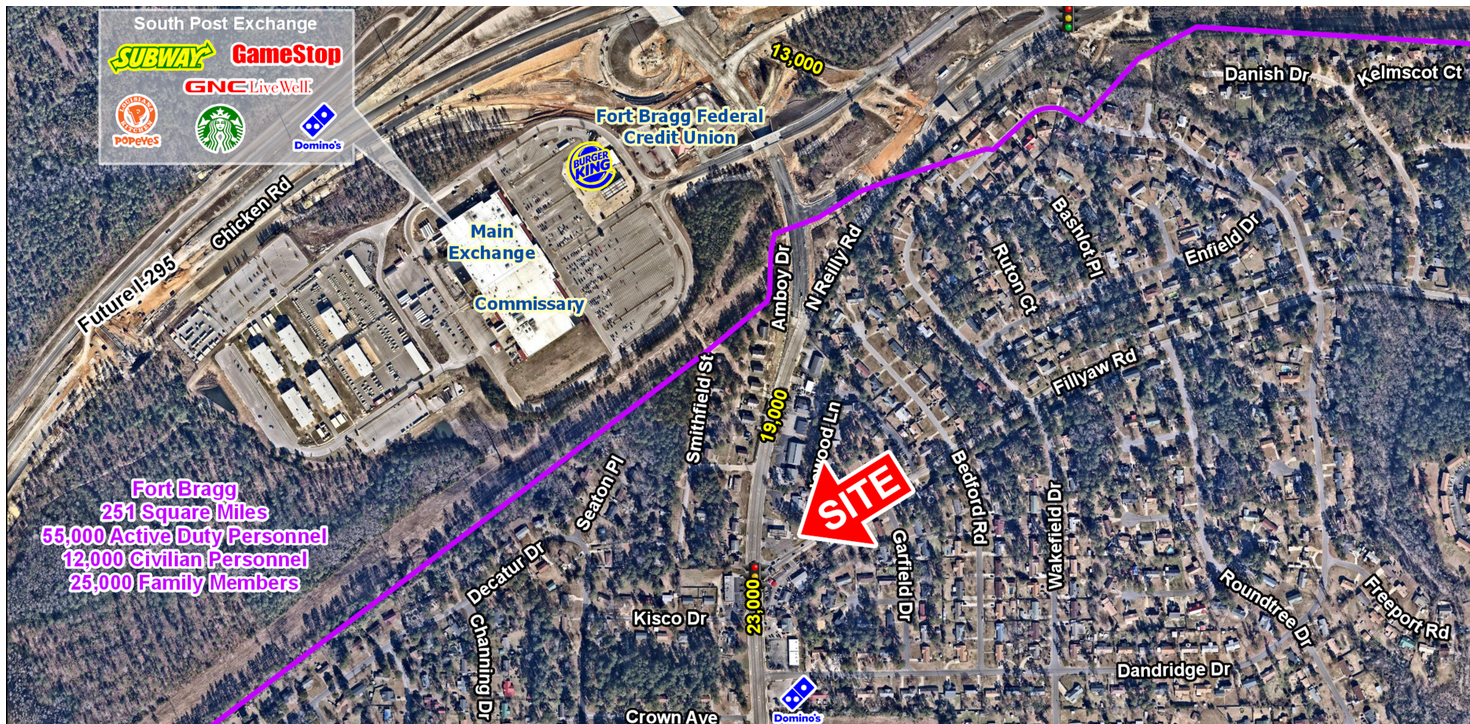


FORMER GAS STATION

670 N. Reilly Rd, Fayetteville, NC 28303

EXECUTIVE SUMMARY



LOCATION OVERVIEW

Northeast corner of Reilly Rd and Fillyaw Rd

PROPERTY HIGHLIGHTS

- Located on the hard corner at a signalized intersection
- Full ingress/ egress
- 0.59 Acres Available
- Located less than half a mile from the South Gate entrance into fort Bragg
- Exiting freestanding pylon sign

DEMOGRAPHICS

	3 MILE	5 MILES	7 MILES
2018 Population	41,802	104,646	187,243
2018 Daytime Population	11,930	48,736	115,255
2018 Median HH Income	\$50,696	\$47,708	\$47,547

EXCLUSIVE AGENT(S)

TAYLOR DROUILLARD • taylor.drouillard@tscg.com • 919.380.8041

JEFF NIMMER, CCIM • jeff.nimmer@tscg.com • 919.380.8041

TYLER QUINN • tyler.quinn@tscg.com • 919.380.8041



FORMER GAS STATION

670 N. Reilly Rd, Fayetteville, NC 28303

ADDITIONAL PHOTOS



EXCLUSIVE AGENT(S)

- TAYLOR DROUILLARD • taylor.drouillard@tscg.com • 919.380.8041
- JEFF NIMMER, CCIM • jeff.nimmer@tscg.com • 919.380.8041
- TYLER QUINN • tyler.quinn@tscg.com • 919.380.8041

No warranty expressed or implied has been made as to the accuracy of this information, no liability assumed for errors or omissions.

