



LAND AVAILABLE FOR SALE OR LEASE

INDUSTRIAL | COMMERCIAL

4041-4051 N 27TH STREET | MILWAUKEE, WI | 53212

PROPERTY DETAILS

Land Area:	8.35 acres
Topography:	Level
Zoning:	I-H: Industrial Heavy
Lot type:	Previously developed lot
Infrastructure:	Curb Gutter Sidewalk Electricity Gas Sewer Water
Proposed Use:	Industrial/Commercial
Frontage:	382' on N 27th St (with curb cuts)
Parcel ID:	246-995-112
Opportunity Zone:	Yes
Traffic (2017):	N 27th St / West Capitol Dr S: 9,300 CPD W Capitol Dr / N 29th St E: 36,100 CPD N27th St / W Roosevelt Dr N: 12,100 CPD W Hope Ave / N 24th St E: 1,500 CPD W Capitol Dr / N 24th Pl W: 31,900 CPD

FOR COMPLETE INFORMATION CONTACT:

✉ PATRICK@PHOENIXINVESTORS.COM | ☎ (414) 376-6933
📍 401 EAST KILBOURN AVENUE, SUITE 201, MILWAUKEE, WI 53202



PHOENIX
INVESTORS

Opportunity. Execution. Value Creation.

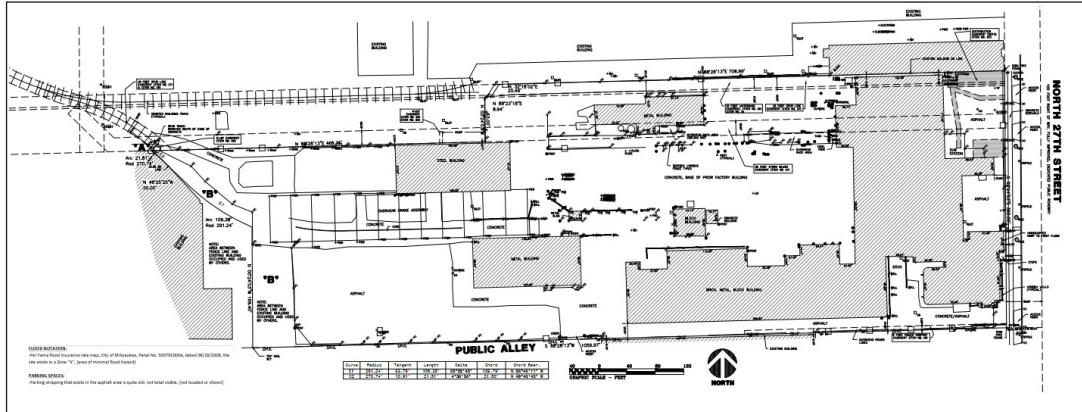


LAND AVAILABLE FOR SALE OR LEASE

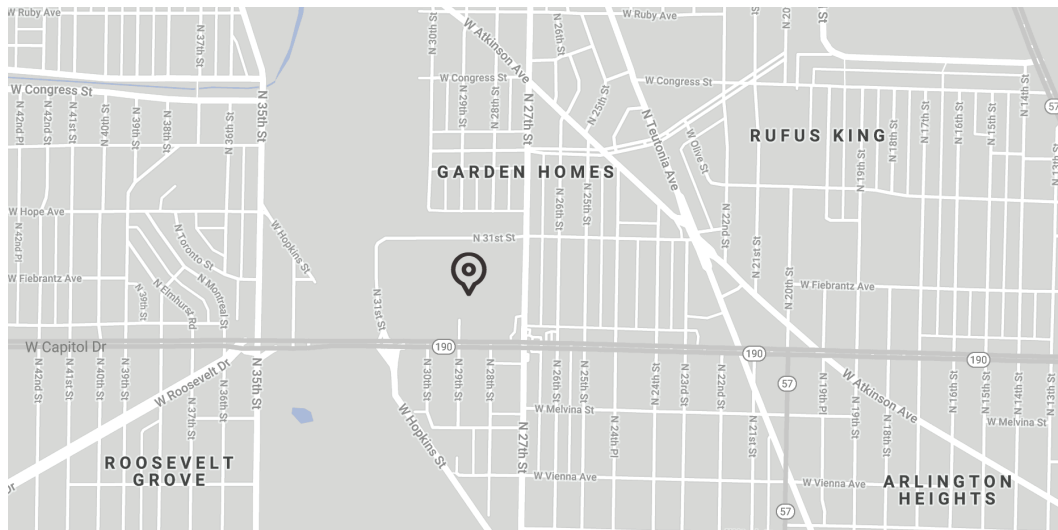
INDUSTRIAL | COMMERCIAL

4041-4051 N 27TH STREET | MILWAUKEE, WI | 53212

SITE PLAN



LOCATION MAP



No warranty or representation, express or implied, is made to the accuracy or completeness of the information contained herein, and same is submitted subject to errors, omissions, change of price, rental or other conditions, withdrawal without notice, and to any special listing conditions imposed by the property owner(s). As applicable, we make no representation as to the condition of the property (or properties) in question.

FOR COMPLETE INFORMATION CONTACT:

✉ [PATRICK@PHOENIXINVESTORS.COM](mailto:patrick@phoenixinvestors.com) | ☎ (414) 376-6933

📍 401 EAST KILBOURN AVENUE, SUITE 201, MILWAUKEE, WI 53202



PHOENIX
INVESTORS

Opportunity. Execution. Value Creation.