

FOR LEASE

Professional Office Space



21 Timberoak Court, Lynchburg, VA 24502

1,500 ± Sq. Ft.

Property Information

SF

1,500 ±

Price

\$950/Month

Features

- 5 Individual Offices
- 2 Restrooms
- 35+ Marked Spaces
- Acoustic Tile Ceilings
- Commercial Grade Carpet

Zoning

B-GC

Property Features

Attractive office space conveniently located off of Timberlake Rd. near the signalized intersection of Timberlake Rd. & Enterprise Dr. This unit features 5 individual offices, 2 restrooms, acoustic tile drop ceiling w/ fluorescent lighting, and a large conference area in the rear of the unit.

Ricky Read, CCIM

Cell: 434-841-3659

Main: 434-455-2285 ext. 101

ricky@realestatelynchburg.com

Rick Read

Direct: 434-455-3618

rread@realestatelynchburg.com

Luke Dykeman

Cell: 434-944-3920

Main: 434-455-2285 ext. 107

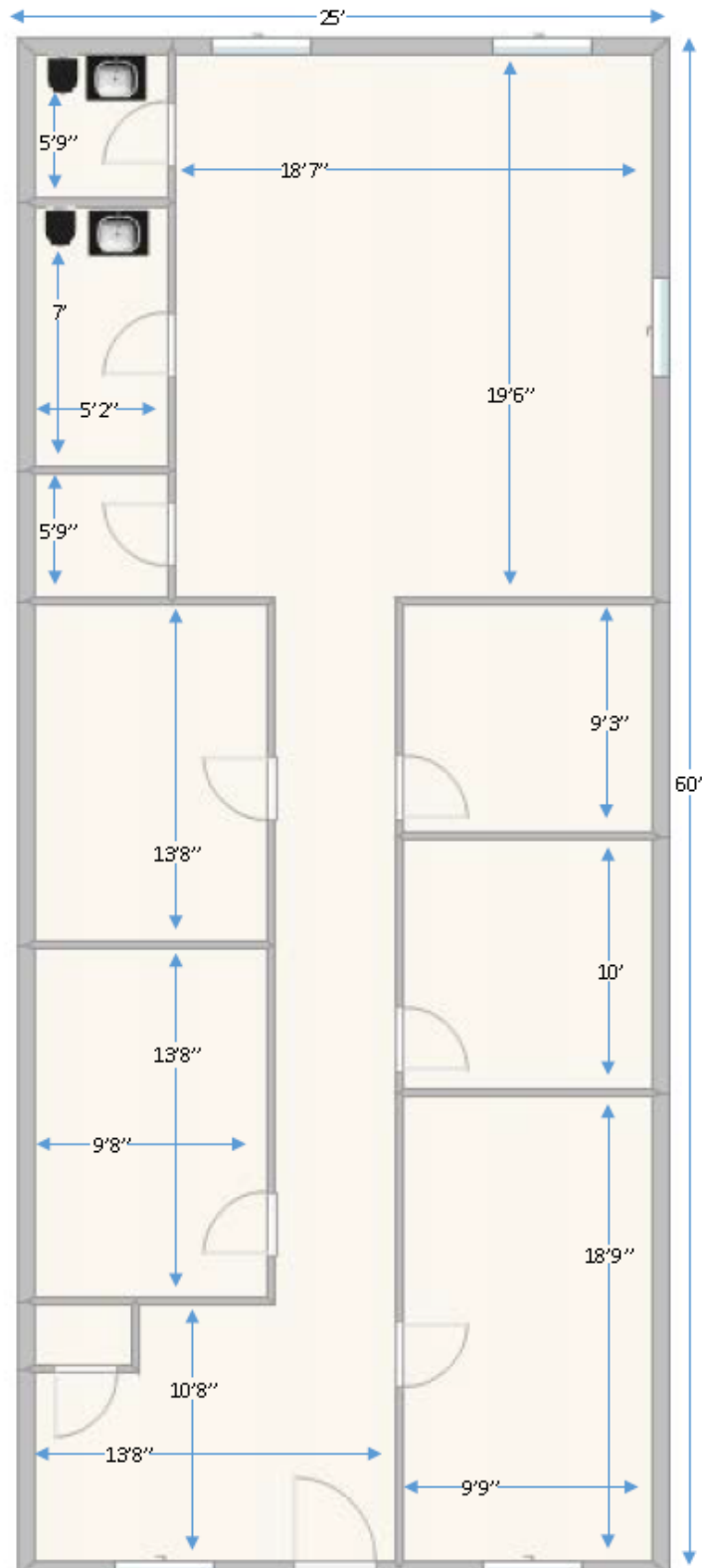
lukedykeman@realestatelynchburg.com

WWW.CBCREAD.COM

©2017 Coldwell Banker Real Estate LLC, dba Coldwell Banker Commercial Affiliates. All Rights Reserved. Coldwell Banker Real Estate LLC, dba Coldwell Banker Commercial Affiliates fully supports the principles of the Equal Opportunity Act. Each Office is Independently Owned and Operated. Coldwell Banker Commercial and the Coldwell Banker Commercial Logo are registered service marks owned by Coldwell Banker Real Estate LLC, dba Coldwell Banker Commercial Affiliates.

Coldwell Banker Commercial
Read & Co., Realtors
101 Annjo Court, Forest, VA 24551
434-455-2285

Floorplan



All dimensions and square footages are approximate. Purchaser or tenant is responsible for verifying the accuracy of this information. All information is subject to change or withdrawal without notice.