

ORANGE TOWN CENTER PLAZA

109 Boston Post Road, Orange, CT

FOR LEASE: 950 - 8,000 SF +/- of Retail/Medical/Office



COLONIAL PROPERTIES



PROPERTY HIGHLIGHTS

- Build-to-Suit Opportunities
- 950- 8,000 Sf +/- Availabilities
- 200 Parking Spaces
- Entrance at a Traffic Light Intersection
- 24,500 Cars Passing Site Daily
- Prime Route 1 Location, Close To I-95

★ **Co-Tenants Include: Munson's Chocolates, Supercuts, Medi-Weightloss, Urgent Care Center, Aflac, Franklin American Mortgage, & Many More!**

DEMOGRAPHICS

| Distance | 1 mi. | 3 mi. | 5 mi. |
|----------------|----------|----------|----------|
| Population | 6,495 | 73,669 | 189,281 |
| Households | 2,535 | 27,966 | 71,827 |
| Avg. HH Income | \$61,125 | \$74,799 | \$74,052 |

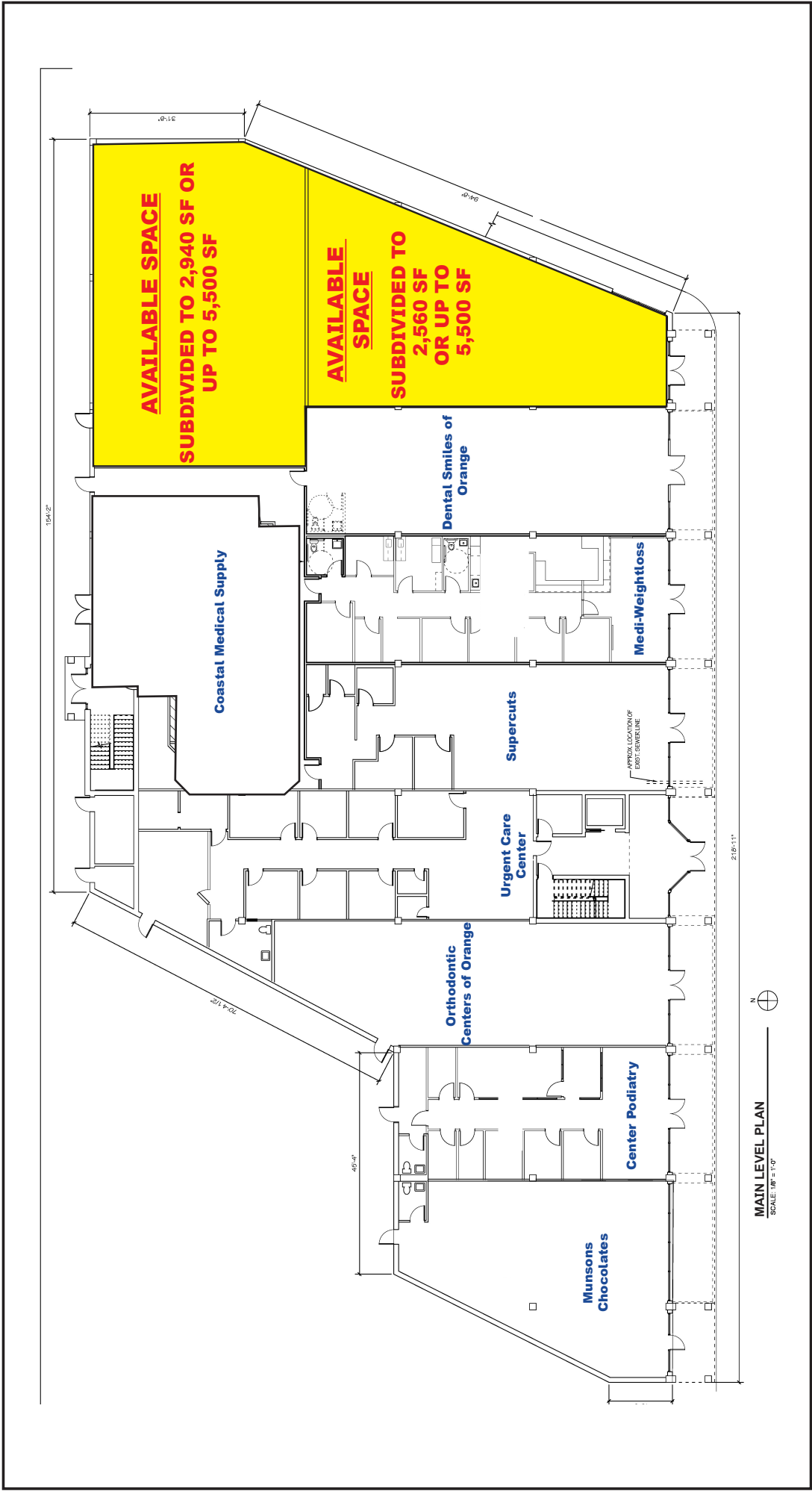
No warranty or representation, expressed or implied, is made as to the accuracy of the information contained herein, and same is submitted subject to errors, omissions, change of price, rental or other conditions, withdrawal without notice, and to any specific listing conditions, imposed by our principals.



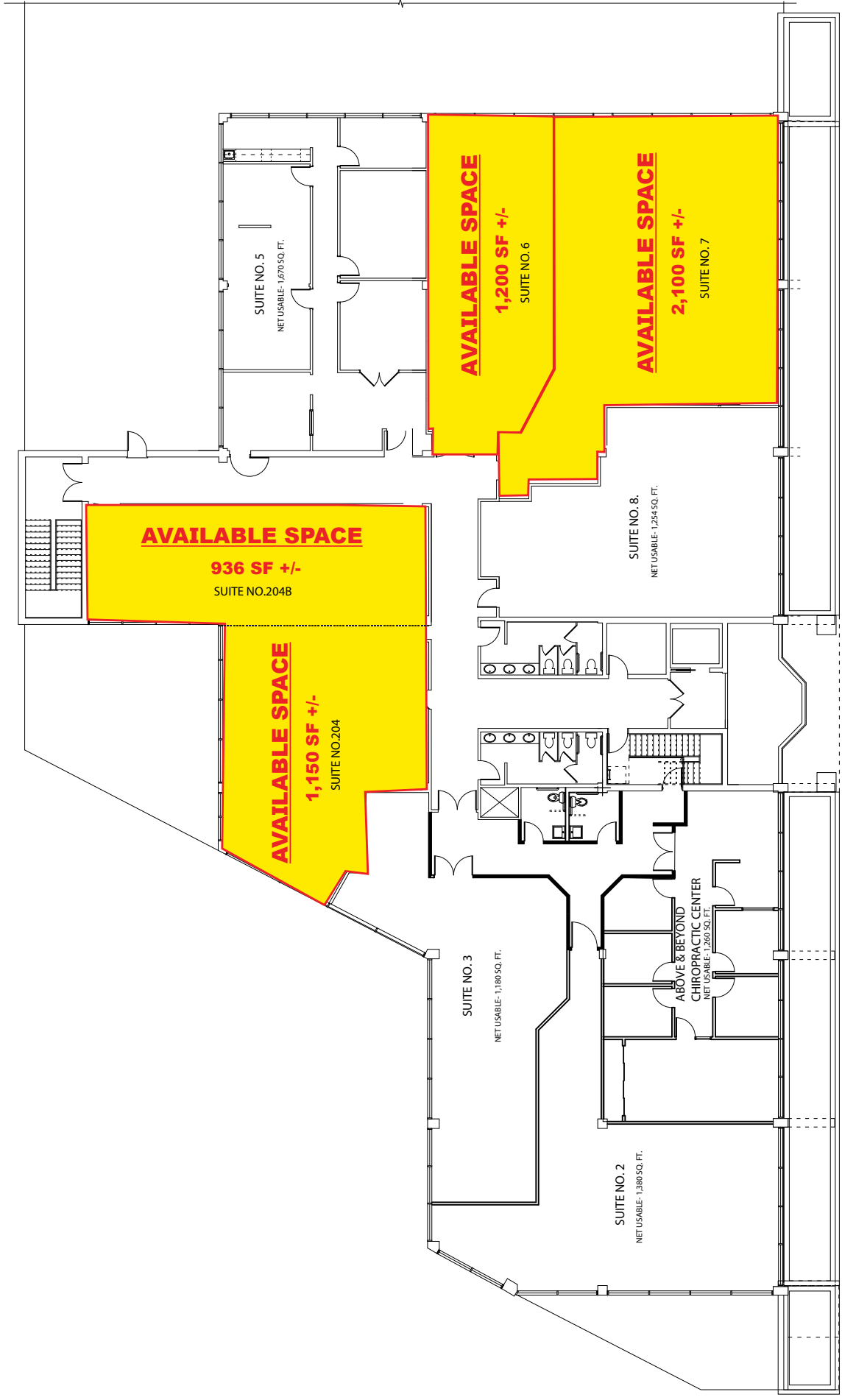
200 Boston Post Road, Orange, CT 06477

Gary Bellard
(203) 795-3853
gary.bellard@colprop.com
www.colprop.com





MAIN LEVEL FLOOR PLAN



2ND LEVEL FLOOR PLAN

SITE PARKING AERIAL VIEW:



NEIGHBORING RETAIL

