



COMMONWEALTH COMMERCIAL

Comprehensive Property Solutions



FOR LEASE

2820 Waterford Lake Dr | Midlothian, Virginia 23113



Evan Ocheltree

T 804-228-4930

E eoeltree@commonwealthcommercial.com



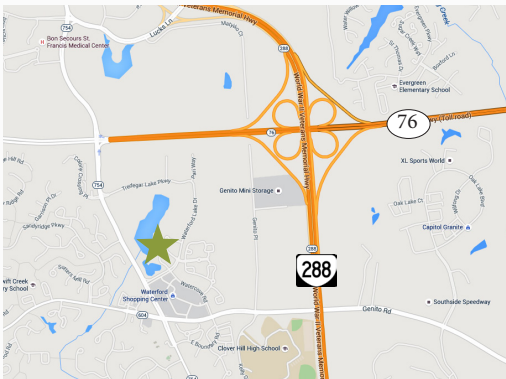
Fred Plaisted, SIOR

T 804-228-4933

E fplaisted@commonwealthcommercial.com

Features

- › Class A office space with lake views ranging from 389± SF-11,501± SF
 - Suite 103: 11,501 SF (lobby entrance)
 - Suite 204-B: 389 SF
 - Suite 206: 3,903 SF
- › ADA accessible
- › Close to restaurants and employee services



MAIN OFFICE ADDRESS: 4198 Cox Road, Suite 200 | Glen Allen, VA 23060 MAILING ADDRESS: P.O. Box 71150 | Richmond, VA 23255

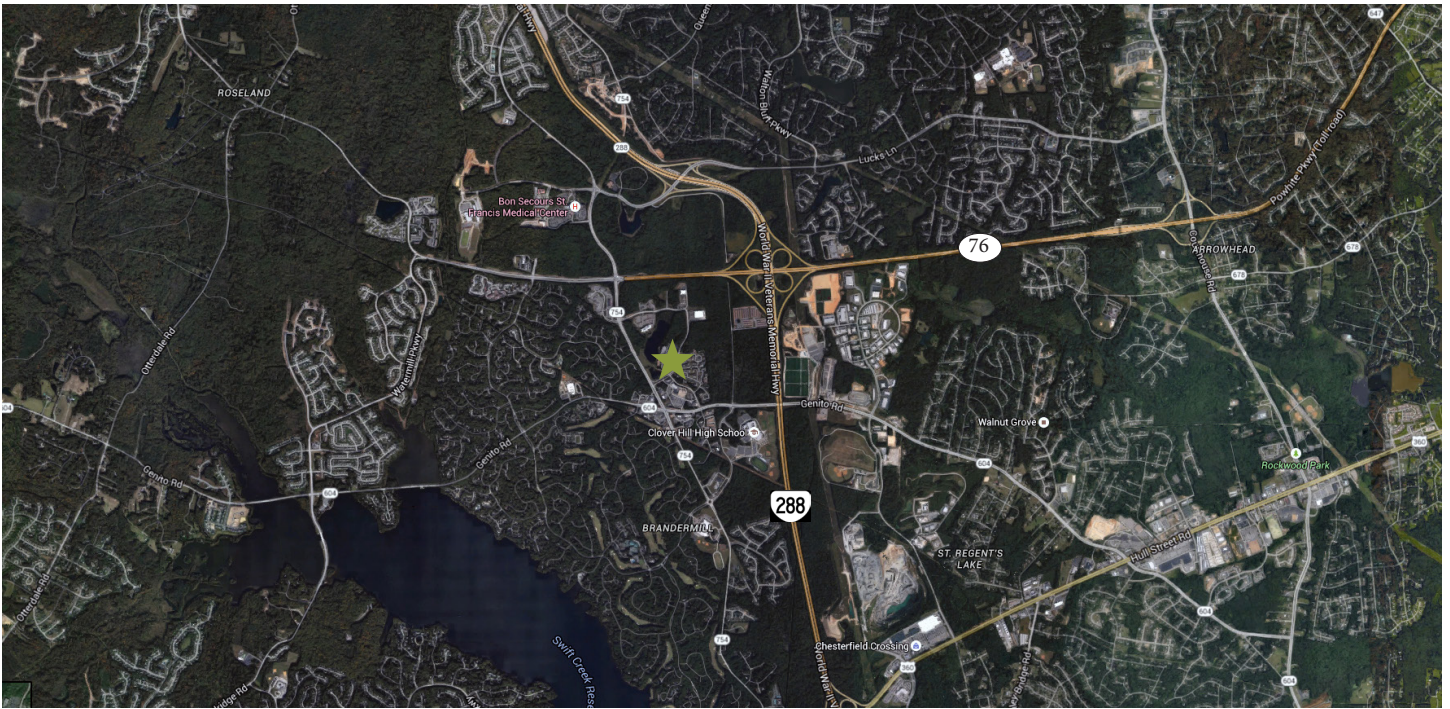
T 804-346-4966 F 804-346-5901 COMMONWEALTHCOMMERCIAL.COM

OFFICE LOCATIONS: Richmond | Hampton Roads | Nashville | Jacksonville | Greensboro | Tampa

Commonwealth Commercial Partners, LLC represents the Owner of this property. Information contained herein, is deemed reliable but not guaranteed.



FOR LEASE 2820 Waterford Lake Dr | Midlothian, Virginia 23113





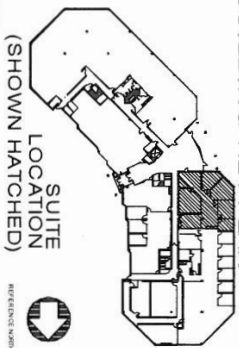
**ARCHITECTURAL &
INTERIOR
SERVICES**

SEVEN H & FRANKLIN BUILDING
1115
RICHMOND, VIRGINIA 23125-2510
(804) 783-9400
AIS.AS@VERIZON.NET

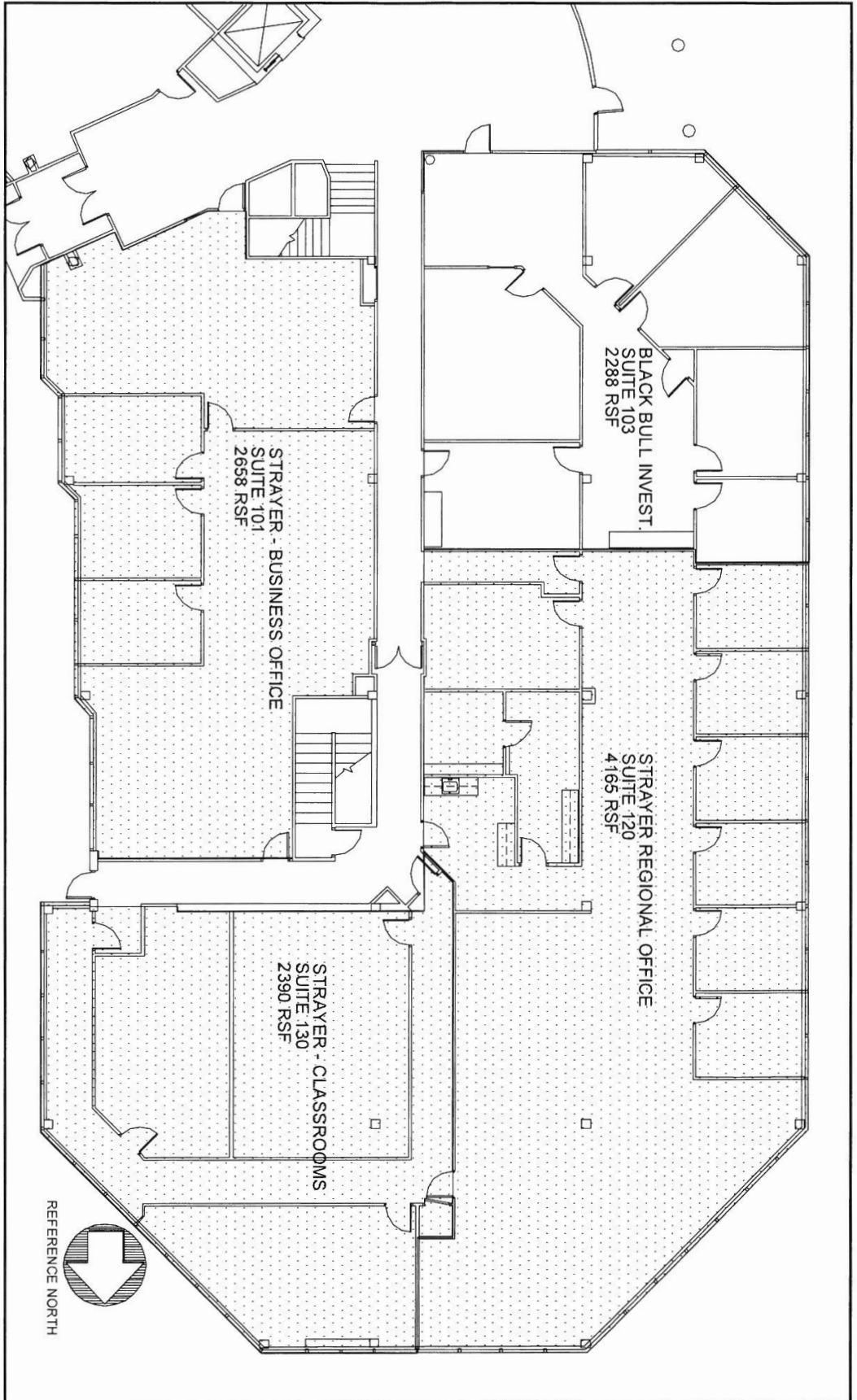
RECORD DRAWING OF
SUITE 103
WATERFORD ONE
OFFICE BUILDING
2820 WATERFORD LAKE DRIVE
MIDLOTHIAN, VIRGINIA 23112

SCALE: 1/16" = 1'-0"
PROJ. NO.: 2298.01
DATE: 20 AUGUST 2015
SHEET NO. 1 OF 1

BUILDING KEY PLAN



SUITE
LOCATION
(SHOWN HATCHED)



REFERENCE NORTH

