



FOR LEASE

Harborstone Financial Center

1445 GALAXY DRIVE, LACEY, WA



Prime Location in Lacey (Marvin Road off-ramp)

CLASS A office space

AMPLE parking

EASY ACCESS to I-5

RATE \$23.00 PSF, modified gross

SIGNAGE building signage available
(one spot)

THIRD FLOOR space, ±3,380 SF

EVAN PARKER

360.705.0174

evan.parker@kidder.com

KIDDER.COM

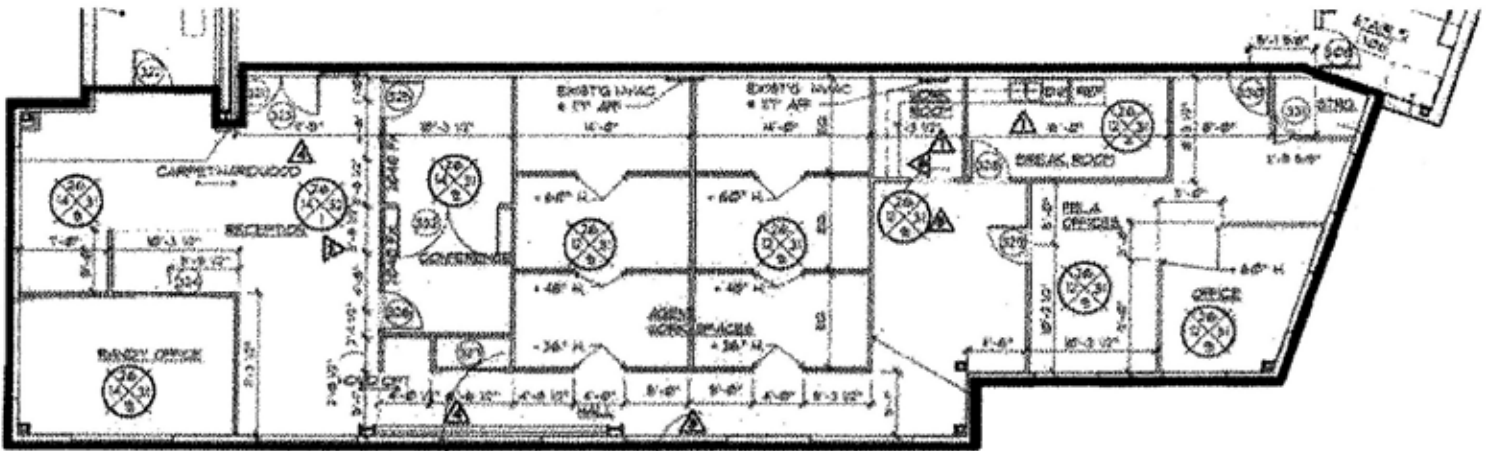
This information supplied herein is from sources we deem reliable. It is provided without any representation, warranty, or guarantee, expressed or implied as to its accuracy. Prospective Buyer or Tenant should conduct an independent investigation and verification of all matters deemed to be material, including, but not limited to, statements of income and expenses. Consult your attorney, accountant, or other professional advisor.

**Kidder
Mathews**

FOR LEASE

Harborstone Financial Center

1445 GALAXY DRIVE, LACEY, WA



EVAN PARKER
360.705.0174
evan.parker@kiddier.com

KIDDER.COM

This information supplied herein is from sources we deem reliable. It is provided without any representation, warranty, or guarantee, expressed or implied as to its accuracy. Prospective Buyer or Tenant should conduct an independent investigation and verification of all matters deemed to be material, including, but not limited to, statements of income and expenses. Consult your attorney, accountant, or other professional advisor.

