



Phillips Centre - L2

300 S. Phillips Avenue, Sioux Falls, SD 57104

Property Features

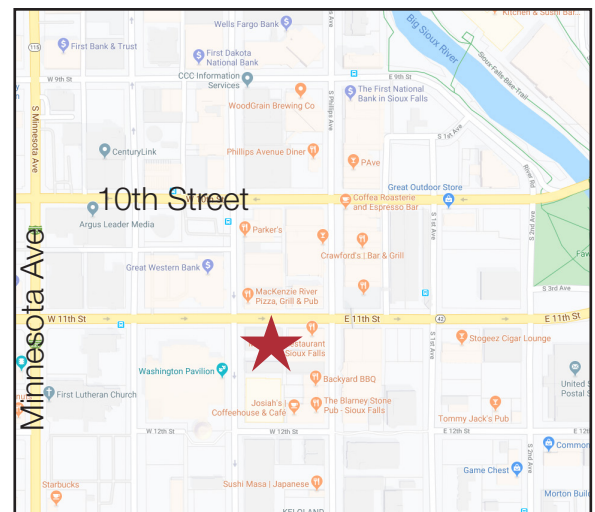
- Professional office space available in the heart of downtown Sioux Falls in Phillips Centre
- Suite size: 1,929 sq. ft.
- Reception area, five private offices, conference room, break room and work area
- Lower level space
- Common area restrooms
- Elevator
- Skywalk to 1st Avenue Parking Ramp and Shriver Square
- Landlord has master lease for parking in city ramp at a discounted rate

Price

- Lease rate: \$1,500/ month gross

Location

- Located in the heart of downtown Sioux Falls
- Co-tenants include: Dacotah Bank, Woods Fuller, Junior Achievement
- Across the street from Minerva's



Craig Hagen, CCIM, SIOR

+1 605 444 7115 Office

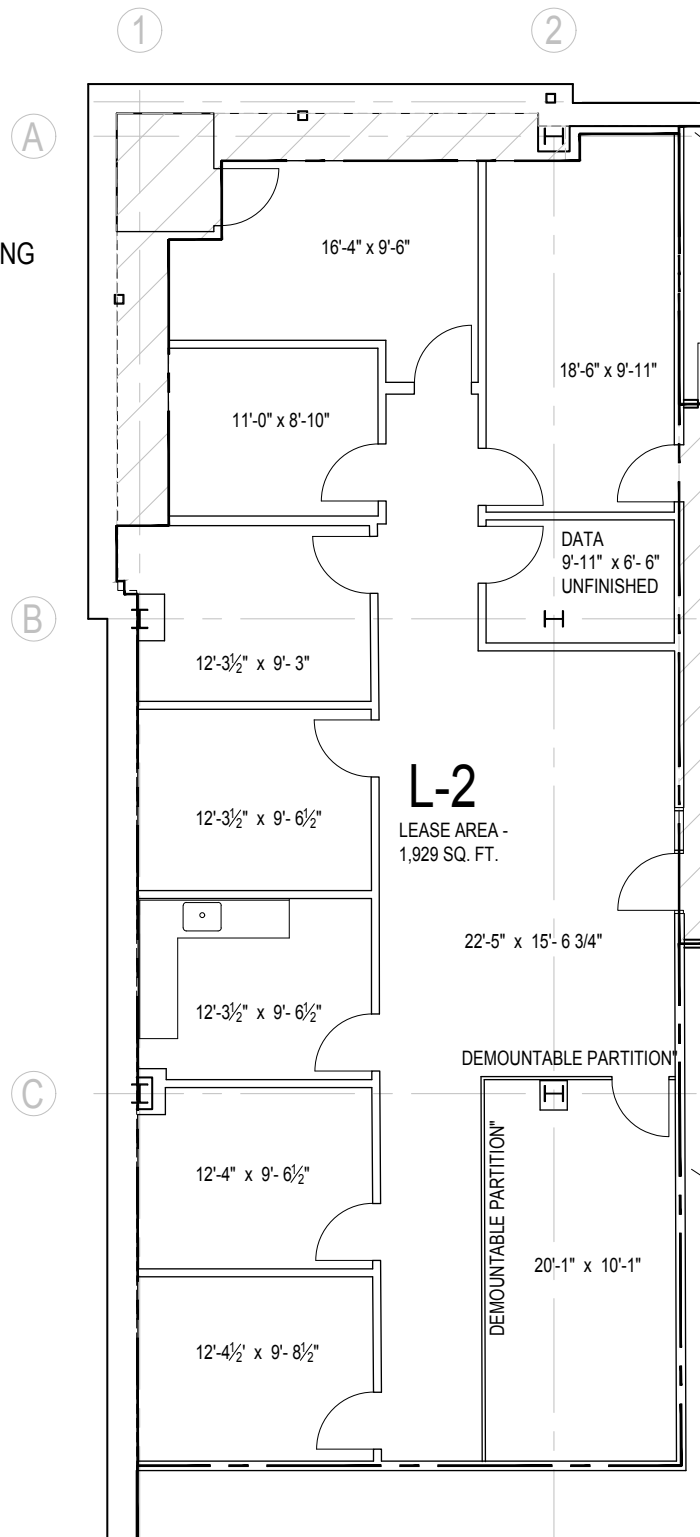
+1 605 310 4227 Cell

chagen@naisiouxfalls.com

PHILLIPS CENTRE BUILDING
300 SOUTH PHILLIPS
SIOUX FALLS

JUNE 11, 2020
BASEMENT FLOOR

NORTHWEST SUITE L-2
1,929 NET SQ. FT.



For Lease
Office Space

