

FOR LEASE

CLASS A GROUND FLOOR SUITE

4343 VON KARMAN AVE, SUITE 100 | NEWPORT BEACH, CA



SUITE 100: ±7,532 SF HIGH IMAGE OFFICE SPACE

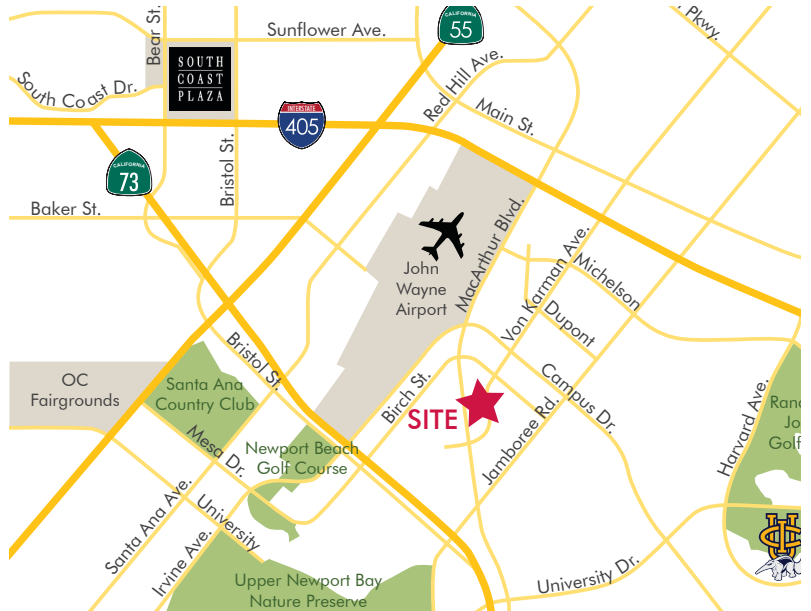
LISTING DATA

- ±7,532 SF office suite in Class A building
- Double door entry off ground floor lobby
- Private Men/Women's restroom in suite
- Located in heart of Koll Center Newport
- Surrounded by beautifully landscaped outdoor common areas
- 4:1000 parking ratio
- Walking distance to numerous hotels, restaurants, cafes, and retail amenities
- Convenient access to all major thoroughfares, John Wayne Airport, and Orange County's most visited destinations

For more information, contact:

PHIL COHEN
Senior Vice President
License #01156287
D 949.790.3160
pcohen@leeirvine.com

TODD SWANSON
Senior Associate
License #01913420
D 949.790.3169
tswanson@leeirvine.com



No warranty or representation is made to the accuracy of the foregoing information. Terms of sale or lease and availability are subject to change or withdrawal without notice.

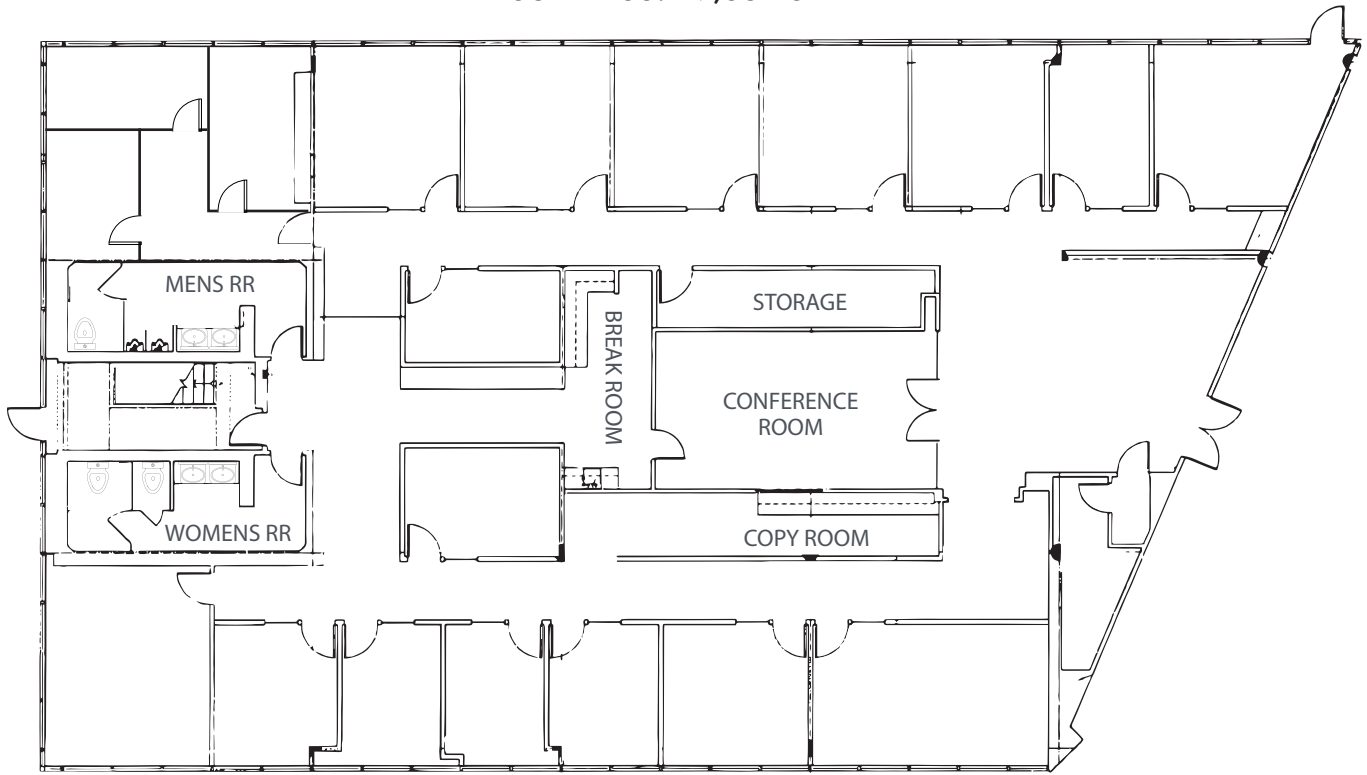
FOR LEASE

CLASS A GROUND FLOOR SUITE

4343 VON KARMAN AVE, SUITE 100 | NEWPORT BEACH, CA



SUITE 100: ±7,532 SF



For more information, contact:

PHIL COHEN

Senior Vice President
License #01156287
D 949.790.3160
pcohen@leeirvine.com

TODD SWANSON

Senior Associate
License #01913420
D 949.790.3169
tswanson@leeirvine.com

All information furnished regarding property for sale, rental or financing is from sources deemed reliable, but no warranty or representation is made to the accuracy thereof and same is submitted to errors, omissions, change of price, rental or other conditions prior to sale, lease or financing or withdrawal without notice. No liability of any kind is to be imposed on the broker herein.