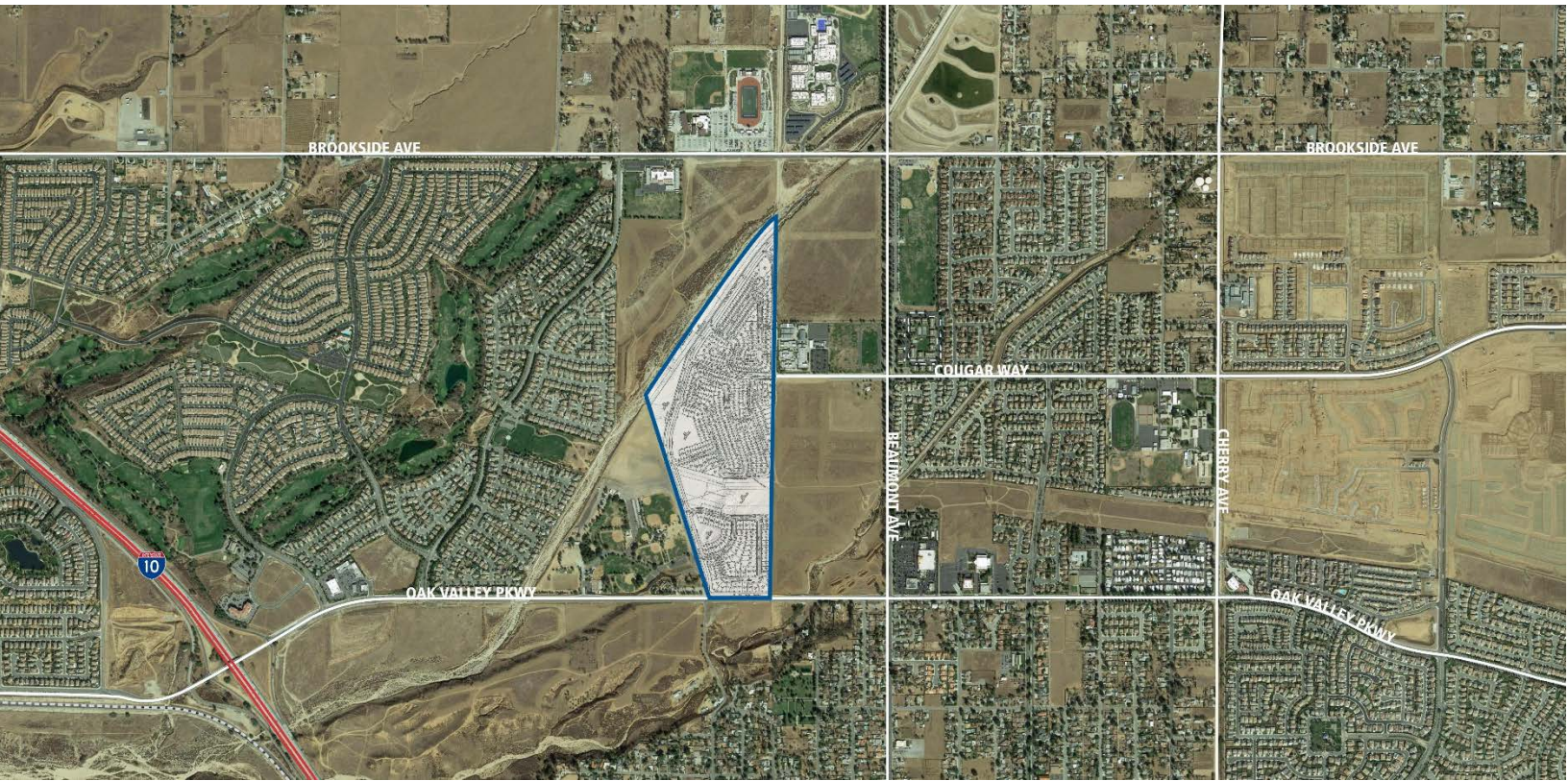


# NOBLE CREEK MEADOWS

Beaumont, CA



## PROPERTY OVERVIEW

Noble Creek Meadows is a ±93.47-acre future community with an approved Tract Map for 274 single-family detached lots with a minimum lot size of 6,000 sf. The Property is part of the Noble Creel Vistas Specific Plan and is immediately adjacent to Beaumont-Cherry Valley Regional Park. More specifically, the Property is located on the northwest corner of Oak Valley Parkway and Beaumont Avenue, north of Interstate 10 in the City of Beaumont, Riverside County.

- Approved Tentative Tract Map 29267 for 274 single-family detached lots with a minimum lot size of 6,000 sf.
- Tract Map 29267 was recently granted a one-year extension from May 25, 2017 to May 25, 2018 with an additional 3 years extension possible.
- The Property has Final Engineering in process.
- Located within the Noble Creek Vistas Specific Plan.

## QUICK FACTS

PROJECT SIZE	274 Lots
ENTITLEMENTS	TTM Approved
SITE CONDITION	Unimproved
OFFERS DUE	Submit Offer



[VIEW MAP](#)



[REQUEST MORE INFO](#)

EXCLUSIVELY LISTED BY:

**Doug Jorritsma** | [djorritsma@landadvisors.com](mailto:djorritsma@landadvisors.com) **Winn Galloway** | [wgalloway@landadvisors.com](mailto:wgalloway@landadvisors.com)

100 Spectrum Center Drive, Suite 1400, Irvine, California 92618 | 949.852.8288 | [www.landadvisors.com](http://www.landadvisors.com)

The information contained herein is from sources deemed reliable. We have no reason to doubt its accuracy but do not guarantee it. It is the responsibility of the person reviewing this information to independently verify it. This flyer is subject to change, prior sale or complete withdrawal. CalBRE#01225173

